

LEGEND

- = SET USFS ALUM. MON. IN RM LS4894 1984
- = FD. BLM MON. IN RM 2 1/2" PIPE W/ 3" BRASS CAP
- ⊗ = FD. 3/4" PIPE W/ 2 1/2" CAP IN RM C.A.F. NO TAG STAMPED LS 4894
- RM = ROCK MOUND
- (-) = RECORD PER GLO
- CAF = COLLINS ALMANOR FOREST (ORIG. EVID. OF COR.)
- = LINE MARKED AND POSTED TO USFS STDS.
- HB = HEALED BLAZE
- S = LEGIBLE SCRIBING
- = FD. 4 1/4" SNAG TREE COR.

Monuments set for this survey are marked per Manual of Instructions.

BEARING TREES

8/9 FD. 52" PINE S32E 218LKS S. GLO
 17/16 SET: 6" FIR N60E 92'
 6" FIR S40E 168'
 6" FIR S15W 105'
 6" FIR N40W 93'

9/16 FD. 13" FIR N45E 45LKS HB BLM
 28" SNAG N24W 51LKS HB
 13" PINE N21W 26LKS HB BLM
 C 1/4 S9 SET: 7" FIR N15E 95'
 10" FIR S60E 315'

N 1/16 S9 SET: 20" FIR S30E 394'
 40" FIR S80E 185'

NE 1/16 S9 SET: 7" FIR S30E 56'
 10" FIR N80E 65'

N 1/16 17/16 SET: 10" PINE N30E 123'
 6" FIR S10W 82'

17/16 SET: 8" CEDAR S70E 382'
 10" CEDAR S35W 172'

11/12 FD. 7" CEDAR N74 1/2 W 38LKS S. BLM
 14/13 36" PINE S55E 36LKS HB GLO
 11/12 SET: 12" CEDAR N80E 472'
 8" FIR S85W 357'

N 1/16 11/12 SET: 12" FIR S80W 115'
 12" PINE S30E 435'

2/11 FD. 9" CEDAR N10E
 20LKS S. BLM
 7" CEDAR N64W
 57LKS S. BLM
 11" PINE S18W
 20LKS HB BLM
 32" CEDAR STUMP
 N68E 134 LKS
 S. GLO

2/11 FD. 32" CEDAR N22W
 31LKS HB GLO
 20" PINE S13E
 52LKS HB BLM

SURVEYORS STATEMENT

THIS MAP CORRECTLY REPRESENTS A SURVEY MADE BY ME OR UNDER MY DIRECTION IN CONFORMANCE WITH THE REQUIREMENTS OF THE LAND SURVEYORS ACT AT THE REQUEST OF LASSEN NATIONAL FOREST

APRIL 1985

Richard A. Regel LS 4894



COUNTY SURVEYORS STATEMENT

THIS MAP HAS BEEN EXAMINED IN ACCORDANCE WITH SECTION 8766 OF THE LAND SURVEYORS ACT
 THIS 16TH DAY OF September 19 85
 (SIGNED) Lawrence J. Brock
 PLUMAS COUNTY ENGINEER
 LAWRENCE J. BROCK RCE 13528

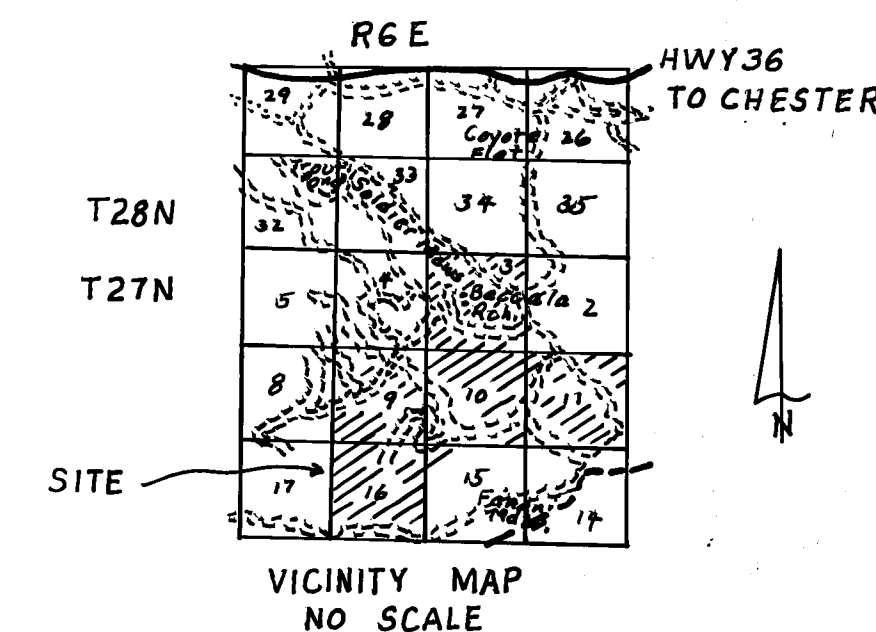
RECORDERS CERTIFICATE

FILED THIS 16TH DAY OF September 19 85
 AT 10:02 AM IN BOOK 7 OF Records of Surveys
 AT PAGE 48 AT THE REQUEST OF THE COUNTY ENGINEER

SIGNED ILA DIGGS
 COUNTY RECORDER
 BY Beth Ammack
 DEPUTY

FEE \$5.00

FILE # 1811

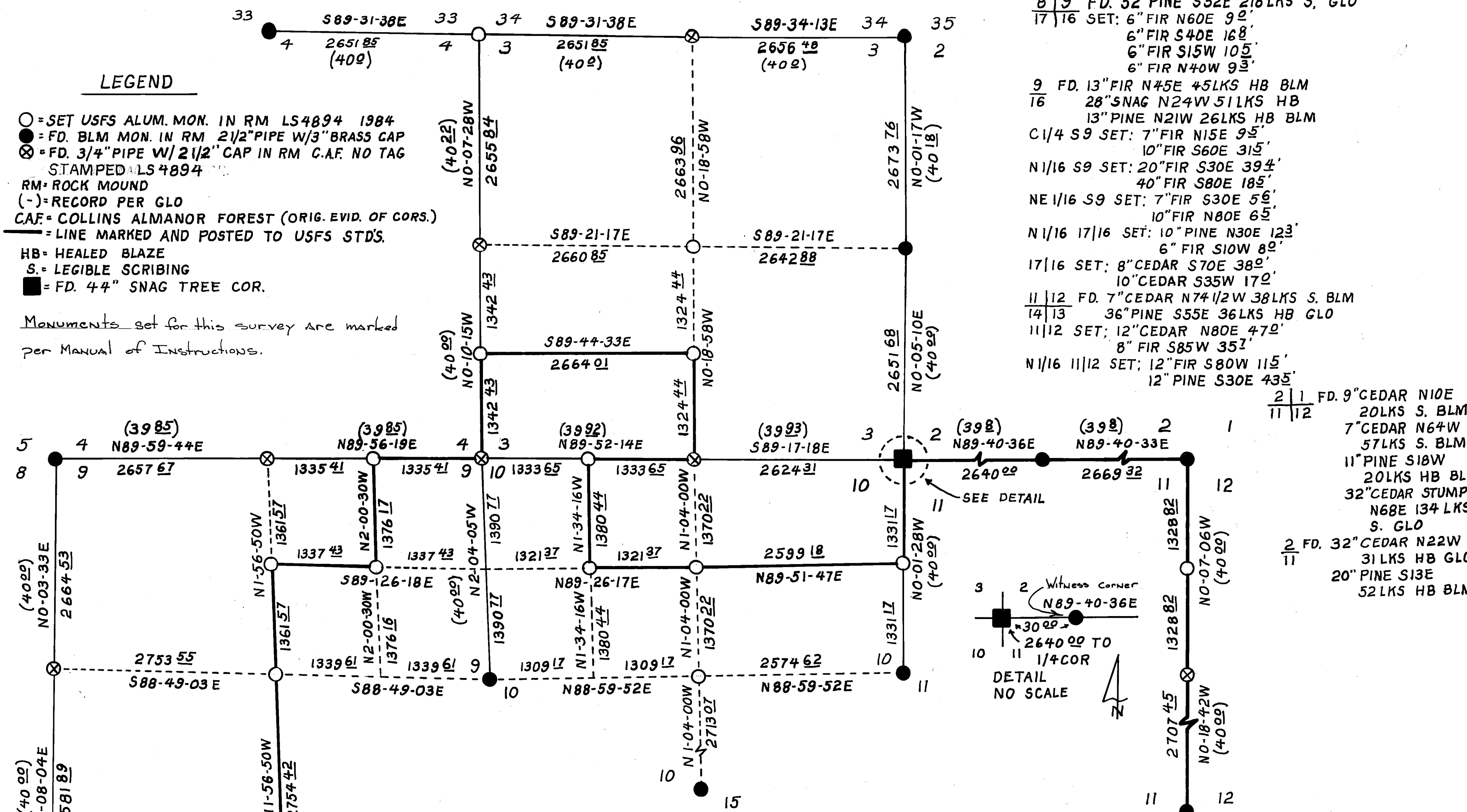


RECORD OF SURVEY

IN THE UNINCORPORATED TERRITORY OF PLUMAS COUNTY
 IN SECTIONS 3, 4, 9, 10, 11 & 16
 T27N, R6E, M.D.M.
 FOR: LASSEN NATIONAL FOREST
 BY: NORTH VALLEY SURVEYORS
 REDDING, CALIF.

APRIL 1985

SCALE 1"=1000'
SHEET 1 OF 1



BEARING TREES

3/2 FD. 48" PINE S19E 175' S. BLM
 11" FIR N27 1/2 E 22LKS HB GLO

3/4/35 FD. 16" FIR S46E 65LKS HB CAF
 21" SNAG N55E 72LKS S. GLO
 24" CEDAR S37W 184LKS HB BLM

3/4 SET: 10" FIR N35W 192'
 10" FIR S30E 252'

33/34 SET: 15" PINE S10E 1782'
 15" PINE S85E 1625'

33/4 FD. 45" FIR N03E 61LKS HB GLO
 35" FIR S05W 71LKS S. GLO
 12" FIR S39W 61LKS HB BLM

4/3 SET: 8" FIR S40W 169'
 6" FIR N60E 94'

S 1/16 4/3 SET: 8" FIR S10E 122'
 12" PINE N20W 307'

4/3 FD. 54" SNAG EAST 280LKS GLO
 9/10 SET: 36" FIR N58E 118'
 10" FIR S80E 742'
 14" FIR S20W 452'
 8" FIR N75W 322'

W 1/16 3/10 SET: 6" FIR N60E 102'
 6" FIR S50W 272'

3/10 SET: 7" PINE S30E 428'
 36" PINE N06W 362'

S 1/16 S3 SET: 14" FIR S70W 184'
 14" FIR S60E 112'

C 1/4 S3 SET: NO TREES

3/2 FD. 16" FIR N58E 31LKS HB GLO
 10/11 19" PINE N44W (REC. N37W)
 30LKS S. GLO

N 1/16 10/11 SET: 8" FIR N10E 102'
 8" PINE S40E 385'

10/11 FD. ROTTED STUMP S16W 28LKS GLO
 ROTTED STUMP N37W 57LKS GLO
 15" FIR S30W 29LKS HB BLM
 8" FIR S34E 50 1/2 LKS HB BLM

10/15 FD. 45" PINE S31W 155LKS S. GLO
 11" PINE S5W 40LKS HB BLM

9/10 FD. 30" PINE S22E 37LKS HB GLO
 27" FIR N76W 45LKS HB GLO
 24" FIR N58W 49LKS HB BLM

NW 1/16 S10 SET: 10" PINE S35W 92'
 7" FIR N50W 158'

N 1/16 S10 SET: 36" PINE S65W 235'
 18" PINE NORTH 235'

C 1/4 S10 SET: 7" FIR S60W 93'
 6" FIR S30E 57'

E 1/16 4/9 SET: 8" FIR EAST 172'
 12" FIR N20W 432'

4/9 FD. 42" PINE NORTH 10LKS
 OPEN BLAZE GLO
 20" PINE S57W 73LKS HB CAF
 SET: 10" FIR S35W 221'
 8" FIR N60W 452'

5/4 FD. 42" FIR S50E 4LKS HB GLO
 8/9 24" FIR S52W 84LKS HB GLO
 36" FIR N45W 65LKS HB GLO
 28" FIR N20E 61LKS HB GLO

8/9 FD. 24" SNAG S10W 44LKS S. GLO
 SET: 11" FIR S30W 135'
 6" FIR S70E 82'

