

USA

USA

USA

USA

USA

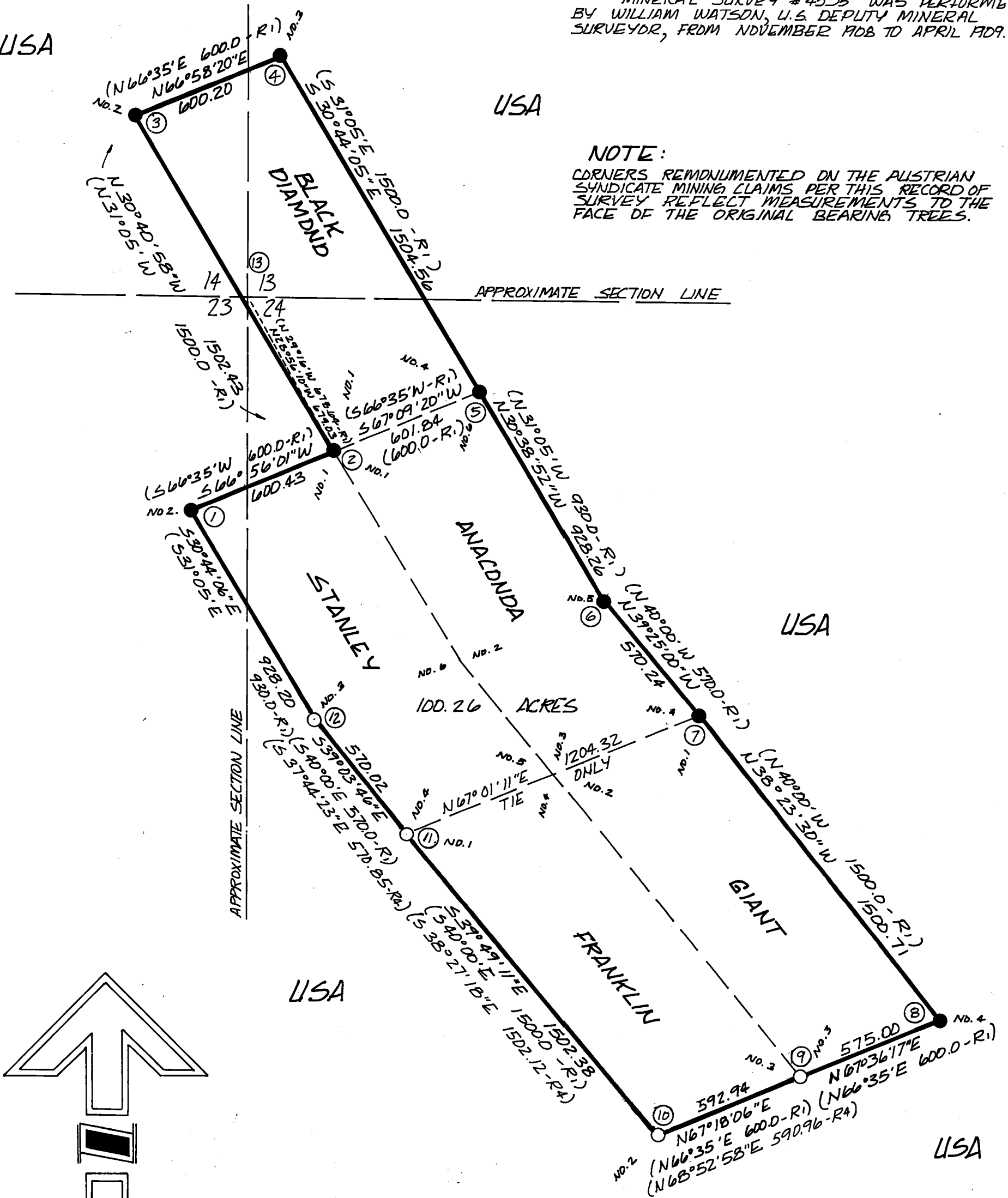
SURVEY HISTORY

MINERAL SURVEY # 4535 WAS PERFORMED BY WILLIAM WATSON, U.S. DEPUTY MINERAL SURVEYOR, FROM NOVEMBER 1908 TO APRIL 1909.

NOTE: CORNERS REMONUMENTED ON THE AUSTRIAN SYNDICATE MINING CLAIMS PER THIS RECORD OF SURVEY REFLECT MEASUREMENTS TO THE FACE OF THE ORIGINAL BEARING TREES.

CORNER NOTES

- ① FOUND SCATTERED ROCK MOUND ± 20' DOWNHILL. FOUND BOTH ORIGINAL BEARING TREES. SET ACAP STAMPED: FROM WHICH: 30" CEDAR W/ SCRIBING "4535 BT" 3 IN. INTO TREE BEARS S53°W 14.8 FT (14.2 TO FACE) (S53°20'W 14.2 FT. -R1) DEAD + DOWN PINE W/ SCRIBING "BT" VISIBLE BEARS N82°E 8.0 FT. (1.7.6 TO FACE) (N82°E 6.7 FT. -R1) (NEW) 12" D.FIR BEARS WEST 19.0 FT. MKD. "S-2 4535 BT" (NEW) 13" D.FIR BEARS N06°W 10.5 FT. MKD. "S-2 4535 BT"
- ② FOUND BOTH ORIGINAL BEARING TREES. SET ACAP STAMPED: FROM WHICH: 12" Y. PINE W/ FACE AND FOOT BLAZE; CUT FOOT BLAZE AND FOUND SCRIBING "BT"; BEARS S78°E 19.1 FT. (18.8 TO FACE) (S78°14'E 18.8 FT. -R1) 20" Y. PINE W/ SCRIBING "11 45° VISIBLE AND FOOT BLAZE BEARS S14°E 15.8 FT. (15.5 TO FACE) (S14°E 15.5 FT. -R1) (NEW) 14" Y. PINE BEARS N22°E 19.4 FT. MKD. "BD-1 4535 BT"
- ③ FOUND BOTH ORIGINAL BEARING TREES. SET ACAP STAMPED: FROM WHICH: 10" Y. PINE (DISEASED) W/ SCRIBING "4535" VISIBLE; CUT FOOT BLAZE AND FOUND SCRIBING "BT" DATES 70-80 YEARS; BEARS N40°E 24.0 FT. TO CENTER TREE (N38°15'E 24.3 -R1) PINE STUMP BEARS N09°W 3.8 FT. TO CENTER STUMP (N16°W 3.2 FT. -R1) (NEW) 8" D.FIR BEARS N33°E 12.6 FT. MKD. "BD-2 4535 BT" (NEW) 10" D.FIR BEARS N23°W 11.8 FT. MKD. "BD-2 4535 BT"
- ④ FOUND M.O.R. ± 5 FT. DOWNHILL OF RE-MONUMENTED LOCATION FOUND BOTH ORIGINAL BEARING TREES. SET ACAP STAMPED: FROM WHICH: 30" CEDAR W/ AXED FACE BEARS S28°W 24.2 FT TO CENTER OF TREE (23.0 TO FACE) (S29°20'W 23 FT. -R1); CUT BEHIND AXED FACE AND FOUND SCRIBING "4535" 5 1/2 IN. INTO TREE 36" D.FIR STUMP W/ PIECE OF FACE SCRIBED "3 4535" BEARS S68°E 29.5 FT TO APPROX. FACE (S68°40'E 29.5 FT. -R1) (NEW) 6" W.FIR BEARS N78°W 9.9 FT. MKD. "BD-3 4535 BT" (NEW) 6" W.FIR BEARS N50°E 12.3 FT. MKD. "BD-3 4535 BT"
- ⑤ FOUND ORIGINAL CEDAR BEARING TREE. CORNER FALLS IN OLD ROAD. SET ACAP STAMPED: FROM WHICH: 30" CEDAR ON THE EDGE OF A ROAD W/ SCRIBING "4535" VISIBLE AND FOOT BLAZE BEARS N57°W 34.1 FT. (32.8 TO FACE) (N56°45'W 32.8 FT. -R1) (NEW) 10" S.PINE BEARS N37°E 34.1 FT. MKD. "BD-4 4535 BT"
- ⑥ FOUND BOTH ORIGINAL BEARING TREES. SET ACAP STAMPED: FROM WHICH: 13" Y. PINE BEARS S07°E 30.8 FT. (30.6 TO FACE) (S07°40'E 30.6 FT. -R1); CUT FACE + FOUND SCRIBING "4535" 14" CEDAR BEARS N14°E 33.0 FT (33.1 TO FACE) (N15°E 34 FT. -R1); CUT FOOT BLAZE + FOUND SCRIBING "BT" (NEW) 6" D.FIR BEARS N04°W 27.8 FT. MKD. "A-5 4535 BT" (NEW) 13" D.FIR BEARS S11°E 31.8 FT. MKD. "A-5 4535 BT"
- ⑦ FOUND PINE STUMP W/ AXE MARKS. SET ACAP STAMPED: FROM WHICH: PINE STUMP W/ AXE MARKS BEARS NORTH 34.5 FT. (TO FACE) (NORTH 34.5 FT. -R1) (NEW) 10" D.FIR BEARS S81°W 33.6 FT. MKD. "A-4 4535 BT" (NEW) 10" CEDAR BEARS S60°E 102.3 FT. MKD. "B-1 4535 BT"
- ⑧ FOUND M.O.R. DOWNHILL OF RE-MONUMENTED POSITION. FOUND BOTH ORIGINAL BEARING TREES. SET ACAP STAMPED: FROM WHICH: 17" W.FIR W/ FACE AND FOOT BLAZE BEARS S70°W 7.8 FT. (7.0 TO FACE) (S68°30'W 7 FT. -R1); CUT FACE AND FOUND SCRIBING "4535" 29" S.PINE W/ FACE AND FOOT BLAZE BEARS S07°W 11.9 FT. (10.8 TO FACE) (S06°45'W 10.8 FT. -R1) (NEW) 6" W.FIR BEARS N49°W 11.8 FT. MKD. "6-4 4535 BT"



- ⑨ FOUND 5/8" ROD WITH 1/4" BRASS CAP STAMPED "T25N R1E F3-93 M63 LS 3079" IN M.O.R. FROM WHICH: 30" W.FIR STUMP BEARS S61°W 14.8 FT. (3 1/2' FIR S31°45'W 10.4 FT; 3' FIR S60°E 19.2 FT. -R1) 10" D.FIR W/ KTAG BEARS S72°W 8.5 FT. 10" S.PINE W/ KTAG BEARS N74°W 36.3 FT. (6.6" D.F. N72°E 38.1 FT.; 6.2" D.F. N86°52'W 38.1 FT. -R2)
- ⑩ FOUND 5/8" ROD WITH 1/4" BRASS CAP STAMPED "T25N R1E F2 1903 LS 3079" IN M.O.R. FROM WHICH: 20" PINE STUMP W/ SCRIBING "BT" BEARS S14°E 12.4 FT. (10.7 TO FACE) (S14°12'E 11.7 FT. -R1) 17" CEDAR STUMP W/ AXE MARKS BEARS S82°W 8.1 FT. (7.5 TO FACE) (S81°E 7.5 FT. -R1) 17" D.FIR W/ FACE BEARS N29°E 24.5 FT. (N30°55'E 24.0 -R2) 20" CEDAR W/ FACE BEARS S38°W 32.6 FT. (S39°43'W 32.1 FT. -R2)
- ⑪ FOUND 5/8" ROD WITH 1/4" BRASS CAP STAMPED "T25N R1E S4-F1 M63 LS 3079" IN M.O.R. FROM WHICH: 33" CEDAR WITH SCRIBING "1 4 4535 BT" VISIBLE BEARS N43 1/2°W 11.6 FT (11.0 TO FACE) (N47°30'W 11.0 FT. -R1) DEAD 20" PINE WITH SCRIBING "1 4 4535 BT" VISIBLE BEARS N38°E 24.1 FT. (N38°30'E 23 FT. -R1)
- ⑫ FOUND 5/8" ROD WITH 1/4" BRASS CAP STAMPED "T25N R1E S3 M63 LS 3079" IN M.O.R. FROM WHICH: 26" W.FIR WITH "X" AND FACE BEARS S37 1/2°W 24.4 FT. (S38°30'W 24 FT. -R1) 21" S.PINE WITH "X" AND FACE BEARS S16 1/2°E 23.6 FT. (S16°10'E 22.8 FT. -R1)
- ⑬ FOUND ROCK MOUND FROM WHICH: 40" D.FIR W/ FACE BEARS S32°W 8.9 FT. (S30°W 12 LKS. -6.L.D.) 20" DEAD + DOWN PINE BEARS N80°W 25.0 FT. (N80°W 38 LKS. -6.L.D.) 36" PINE W/ FACE BEARS N40°E 17.8 FT. (N40°E 27 LKS. -6.L.D.) 31" S.PINE W/ FACE BEARS S23 1/2°E 38.2 FT. (S 24 1/2°E 58 LKS. -6.L.D.)

LEGEND

- FOUND CORNER AS NOTED
- SET CORNER AS NOTED IN MOUND OF ROCKS
- REPRESENTS SURVEYED, MARKED AND POSTED BOUNDARY
- R1 RECORD DATA PER M.S. 4535
- R2 RECORD DATA PER M.S. 5846
- R3 RECORD DATA PER M.S. 4349
- R4 RECORD DATA PER 2 R.S. 117
- R5 RECORD DATA PER 2 R.S. 118
- M.O.R. MOUND OF ROCKS
- ACAP 2 1/2" X 3" ALUM PIPE MONUMENT WITH 3/4" ALUM CAP AND PLASTIC BASE MANUFACTURED BY BERNSTEIN, EXCEPT AS NOTED
- DIMENSION LINE
- ③ KEY TO CORNER NOTES
- CALCULATED POINT - NOTHING SET

BASIS OF BEARINGS

THE BASIS OF BEARINGS FOR THIS SURVEY IS TRUE NORTH AS DETERMINED BY SOLAR OBSERVATION USING THE ALTITUDE METHOD.

"PEEL RIDGE CADASTRAL SURVEY" CONTRACT No. 53-7A13-4-71

RECORD OF SURVEY

FOR THE PLUMAS NATIONAL FOREST LOCATED IN SECTIONS 13, 14, 23, 24, 25 & 26, TOWNSHIP 25 NORTH, RANGE 11 EAST, M.D.M., PLUMAS CO., CALIF.

J & M ASSOCIATES ENGINEERS SURVEYORS

P.O. BOX 749 QUINCY, CALIF. 95971

75 COURT STREET (916) 283-1111

AUGUST 1985

SHEET 1 OF 4

SURVEYOR'S STATEMENT

THIS MAP CORRECTLY REPRESENTS A SURVEY MADE BY ME OR UNDER MY DIRECTION IN CONFORMANCE WITH THE REQUIREMENTS OF THE LAND SURVEYORS' ACT AT THE REQUEST OF THE PLUMAS NATIONAL FOREST IN OCTOBER, 1984.

Mark D. Felsing
MARK D. FELSING L.S. 4976

COUNTY SURVEYOR'S STATEMENT

THIS MAP HAS BEEN EXAMINED IN ACCORDANCE WITH SECTION 8766 OF THE LAND SURVEYORS' ACT THIS 28TH DAY OF October 1985.

Lawrence J. Brock
LAWRENCE J. BROCK R.C.E. 1352B
PLUMAS COUNTY SURVEYOR

RECORDER'S CERTIFICATE

FILED THIS 30 DAY OF October, 1985, AT 10:45 A.M. IN BOOK 7 OF RECORD OF SURVEYS AT PAGE 52, AT THE REQUEST OF THE COUNTY ENGINEER.

FEE \$ 11.00
FILE No. 3079

ILA DIGGS
PLUMAS COUNTY RECORDER
BY Patricia Lacey
DEPUTY