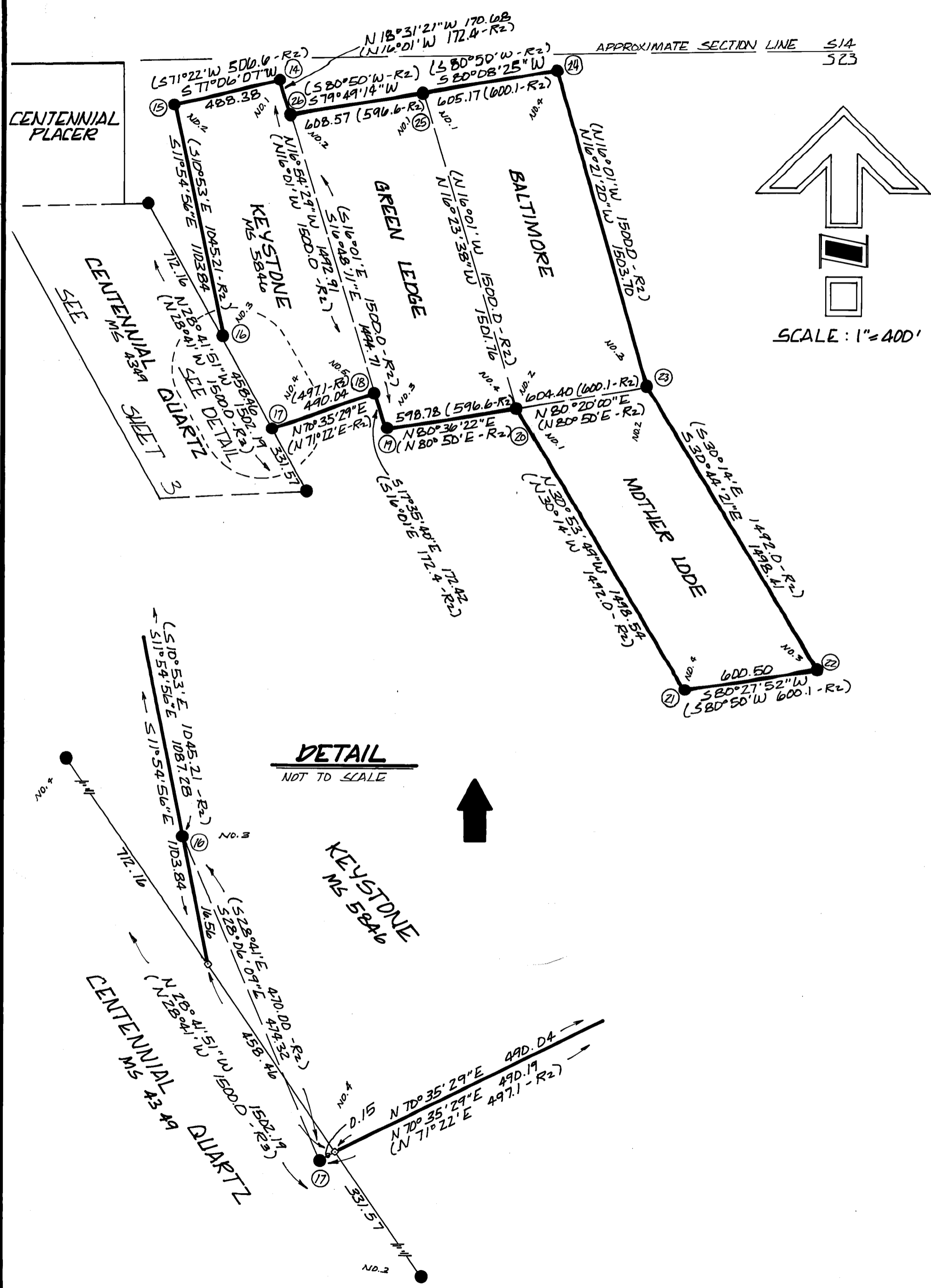


MINERAL SURVEY # 5846
(PORTION PATENTED 1933)
71.59 Acres

CORNER NOTES



- 14) FOUND ORIGINAL BEARING TREES. SET ACAP STAMPED:
FROM WHICH:
32" CEDAR WITH SCRIBING "K1 5846 BT" VISIBLE BEARS N 90° (N 120° TO FACE) 28.4 FT. (N 101° 14' W 28.4 FT. - R2)
10" LIVE OAK BEARS S 81° E 19.3 FT. (S 76° 30' E 19.3 FT. - R2); CUT AND FOUND SCRIBING "K1 1/2" INTO TREE
(NEW) 11" S. PINE BRS. N 83° W 26.4 FT. MKD. "K-1 5846 BT"
- 15) FOUND DRILL STEEL. REPLACED WITH ACAP STAMPED:
FROM WHICH:
37" D. FIR BEARS N 40° W 34.4 FT. (N 40° 20' W 34.4 FT. - R2); CUT AND FOUND SCRIBING "K2 5846 BT"
ROTTED PINE STUMP HDL BEARS S 53° W 16.6 FT. (S 52° 41' W 17 FT. - R2); FOUND REMAINS OF TREE DOWNHILL WITH SCRIBING "K2 5... BT" VISIBLE
(NEW) 5" J. PINE BEARS N 18° W 21.7 FT. MKD. "K2 5846 BT"
(NEW) 7" LIVE OAK BEARS S 56° E 18.8 FT. MKD. "K2 5846 BT"
- 16) FOUND ORIGINAL BEARING TREES. SET 1"x1" ALUM. ROD WITH 3/4" ALUM. CAP IN ROCK OUTCROPPING (STAR-DRILLED) STAMPED:
FROM WHICH:
14" D. FIR WITH FACE BRS. N 25° W 45.5 FT. (N 25° 15' W 45.5 FT. - R2)
16" D. FIR WITH FACE BRS. N 59° E 39.5 FT. (N 58° 45' E 39.5 FT. - R2)
- 17) FOUND ORIGINAL BEARING TREES. SET ACAP STAMPED:
FROM WHICH:
32" S. PINE WITH FACE BEARS S 62° E 27.6 FT. (S 60° E 27.6 FT. - R2)
27" S. PINE WITH SCRIBING "K4 5846 BT" VISIBLE BEARS N 12° W 35.5 FT. (N 19° W 35.5 FT. - R2)
- 18) FOUND ORIGINAL BEARING TREES. SET ACAP STAMPED:
FROM WHICH:
6 1/2" CEDAR WITH SCRIBING "K5 5846 BT" VISIBLE BEARS S 48° E 4.4 FT. (S 49° 15' E 4.4 FT. - R2)
11" CEDAR WITH CLOSED FACE BEARS N 28° E 5.0 FT. (N 27° 15' E 5.0 FT. - R2)
- 19) FOUND ORIGINAL BEARING TREES. SET ACAP STAMPED:
FROM WHICH:
22" CEDAR WITH TWO FACES BEARS N 76° W 39.7 FT. (N 77° 50' W 39.7 FT. - R2)
20" D. FIR WITH TWO FACES AND SCRIBING VISIBLE BEARS S 38° E 37.9 FT. (S 37° 16' E 37.9 FT. - R2)
- 20) FOUND ORIGINAL BEARING TREES. SET ACAP STAMPED:
FROM WHICH:
25" D. FIR BEARS S 27° E 105.9 FT. (S 27° 47' E 105.9 FT. - R2) CUT AND FOUND SCRIBING "M1 1 B2 6 L 4 5846"
22" P. PINE WITH SCRIBING "L1 2 B BT" VISIBLE BEARS N 62° W 37.0 FT. (N 65° 56' W 37.0 FT. - R2)
(NEW) 14" D. FIR BEARS S 01° W 57.1 FT. MKD. "M1 1 6 L 4 82 5846 BT"
- 21) CORNER FALLS IN WARD CREEK. WITNESS CORNER BEARS S 50° E 75.1" W 10.00 FT. (S 50° 50' W 10 FT. - R2); FOUND 4"x4" ALDER POST SCRIBED "M1 4, E S 4, 2 F 4, 5846" 18" INTO GROUND IN M.O.R. SET ACAP IN PLACE OF POST STAMPED:
FROM WHICH:
DEAD 27" D. FIR BEARS S 77° W 2.4 FT. TO THE FACE (S 74° 10' W 2 FT. - R2); CUT AND FOUND SCRIBING "M1 4 E S 4 2 F 4 5846 BT"
11" ALDER WITH FACE (NO SCRIBING VISIBLE) BEARS S 64° E 14.8 FT. (S 79° 13' E 14.8 FT. - R2)
(NEW) 6" CEDAR BEARS N 73° W 48.1 FT. MKD. "M1 4 W C 5846 BT"
(NEW) 11" W. FIR BEARS N 10° W 10.6 FT. MKD. "M1 4 W C 5846 BT"
- 22) FOUND PINE POST WITH FAINT SCRIBING IN M.O.R. SET ACAP IN M.O.R. STAMPED:
FROM WHICH:
22" D. FIR WITH FACE BEARS S 69° W 20.0 FT. (S 66° 33' W 19.8 FT. - R2)
15" DEAD AND DOWN PINE WITH SCRIBING "E S 3 M L 3 1 5846 BT" BEARS N 41° E 18.1 FT. (N 30° 34' E 18.8 FT. - R2)
(NEW) 17" D. FIR BEARS N 04° E 33.1 FT. MKD. "M1 3 5846 BT"
- 23) FOUND ORIGINAL BEARING TREES. SET ACAP STAMPED:
FROM WHICH:
19" CEDAR WITH SCRIBING "B3 L J Z M L 2 5846" VISIBLE BEARS S 07° E 31.4 FT. (S 12° 08' E 31.4 FT. - R2)
ROTTED PINE STUMP WITH FAINT AXE MARKS BEARS N 79° E 37.8 FT. (N 76° 41' E 37.8 FT. - R2)
(NEW) 9" D. FIR BEARS N 89° E 27.2 FT. MKD. "B3 M L 2 5846 BT"
- 24) FOUND ROCK MOUND WITH POST HOLE REMAINS AND POST (5" SQ.) SCRIBED "B4 5846". SET ACAP IN POST HOLE STAMPED:
FROM WHICH:
15" PINE BEARS N 70° W 11.4 FT. (N 70° 35' W 11.4 FT. - R2) CUT AND FOUND SCRIBING "L J 1 B 4 5846 BT"
16" PINE SNAG (6 1/2' HIGH) WITH SCRIBING "L J 1 B 4 5846 BT" BEARS S 87° E 33.6 FT. (N 88° 05' E 33.5 FT. - R2)
(NEW) 19" V. PINE BEARS S 08° W 34.4 FT. MKD. "B4 5846 BT"
(NEW) 5" D. FIR BEARS S 77° E 20.3 FT. MKD. "B4 5846 BT"
- 25) FOUND ORIGINAL BEARING TREES. SET 5/8" X 3" DRIVE-IN ALUM. ROD WITH 3/4" ALUM. CAP STAMPED:
FROM WHICH:
36" CEDAR WITH SCRIBING "B1 5846 BT" VISIBLE BEARS N 04° W 58.0 FT. (N 10° 40' W 58.0 FT. - R2)
DOWN S. PINE (± 32") WITH SCRIBING VISIBLE BEARS N 76° E 34.3 FT. (N 77° 03' E 34.3 FT. - R2)
(FND) 12" D. FIR WITH SCRIBING "66" VISIBLE BEARS S 53° W 24.8 FT.
(FND) 16" CEDAR WITH SCRIBING "66 B 9" VISIBLE BEARS S 07° E 4.6 FT.
- 26) FOUND ORIGINAL BEARING TREES. SET ACAP STAMPED:
FROM WHICH:
30" S. PINE WITH FACE BEARS N 76° E 36.7 FT. (N 74° 30' E 36.7 FT. - R2)
DEAD AND DOWN FIR WITH SCRIBING BEARS S 81° E 33.4 FT. (S 80° 45' E 33.4 FT. - R2)
(FND) 22" V. PINE WITH SCRIBING "66 B 9" VISIBLE BEARS S 43° E 43.5 FT.
(FND) 10" LIVE OAK WITH SCRIBING "T B 1 66 B 9 A" VISIBLE BEARS N 70° W 14.5 FT.

SCALE: 1" = 400'

SURVEY HISTORY

MINERAL SURVEY # 5846 WAS PERFORMED BY WILLIAM WATSON, U.S. DEPUTY MINERAL SURVEYOR, FROM SEPTEMBER 1926 TO OCTOBER 1925.

LEGEND

- FOUND CORNER AS NOTED
- SET CORNER AS NOTED IN MOUND OF ROCKS REPRESENTS SURVEYED, MARKED AND POSTED BOUNDARY
- R1 RECORD DATA PER M.S. 4535
- R2 RECORD DATA PER M.S. 5846
- R3 RECORD DATA PER M.S. 4349
- R4 RECORD DATA PER 2 R.S. 117
- R5 RECORD DATA PER 2 R.S. 118
- M.O.R. MOUND OF ROCKS
- ACAP 2 1/2" x 3" ALUM. PIPE MONUMENT WITH 3/4" ALUM. CAP AND PLASTIC BASE MANUFACTURED BY BERNSTEIN, EXCEPT AS NOTED
- DIMENSION LINE
- ③ KEY TO CORNER NOTES
- CALCULATED POINT - NOTHING SET

BASIS OF BEARINGS

THE BASIS OF BEARINGS FOR THIS SURVEY IS TRUE NORTH AS DETERMINED BY SOLAR OBSERVATION USING THE ALTITUDE METHOD.

RECORD OF SURVEY

FOR THE PLUMAS NATIONAL FOREST
J & M ASSOCIATES