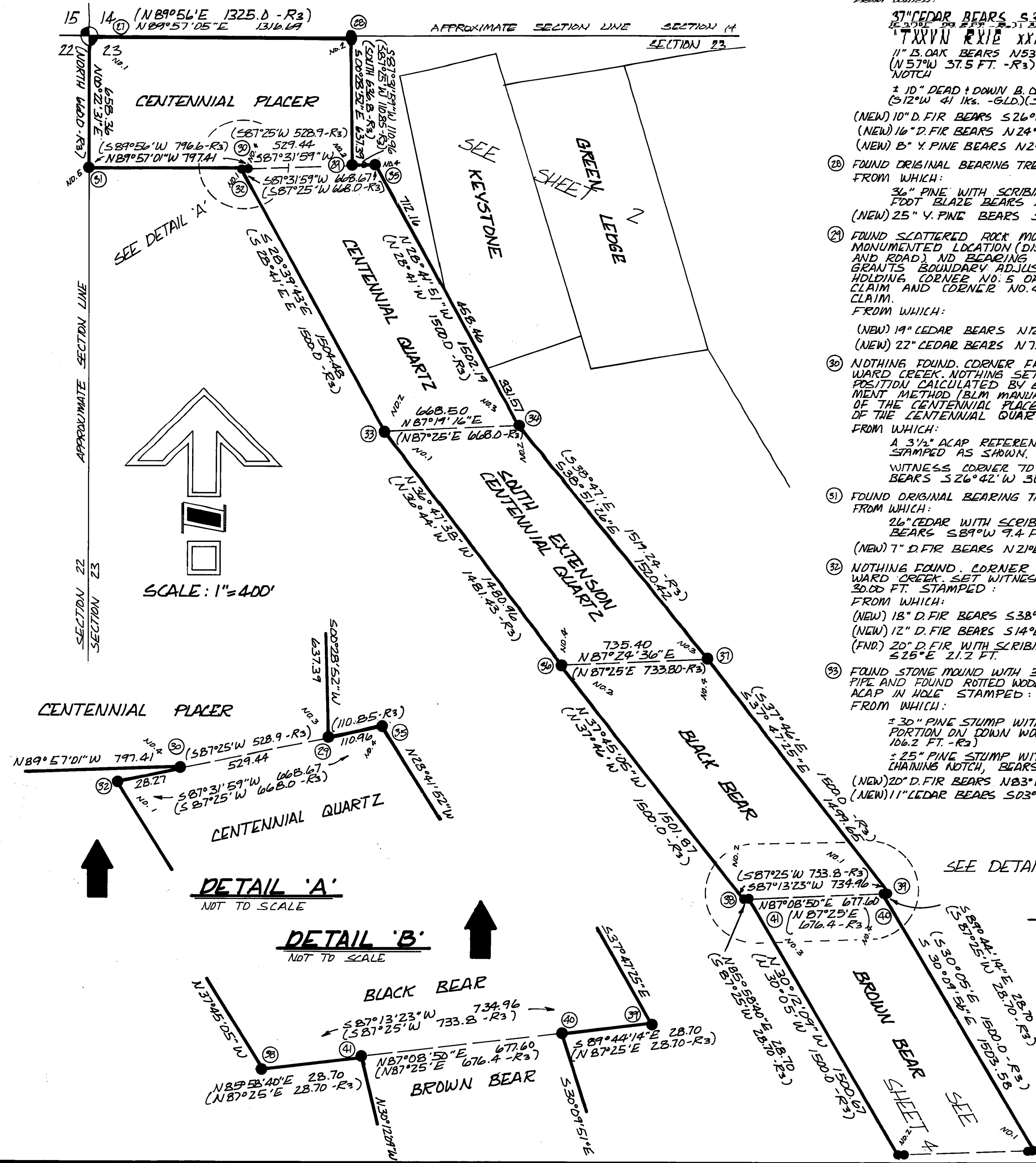


'FIVE BEARS CONSOLIDATED MINING CLAIM'
MINERAL SURVEY # 4349
 184.14 Acres

CORNER NOTES



- ① FOUND 2" O.D. IRON PIPE WITH 2" CAP IN M.O.R. STAMPED:
 1" CEDAR BEARS S31°E 28.5 FT. / S37°E 45.1 Ks. 61.8
 "TXXV RXIE XXIII"
 1" B. OAK BEARS N53°W 36.0 FT. (N56 1/2°W 57 Ks. - 61.0)
 (N57°W 37.5 FT. - R3); CUT AND FOUND AXE MARKS AND CHAINING NOTCH
 ± 10" DEAD DOWN B. OAK AND STUMP HOLE BEARS S17°W 26.7 FT.
 (S12°W 41 Ks. - 61.0) (S12°W 27 FT. - R3)
- (NEW) 10" D. FIR BEARS S26°W 21.0 FT. MKD. "T25N RIE S22 BT"
 (NEW) 16" D. FIR BEARS N24°E 29.0 FT. MKD. "T25N RIE S14 BT"
 (NEW) 8" Y. PINE BEARS N24°W 27.8 FT. MKD. "T25N RIE S15 BT"
- ② FOUND ORIGINAL BEARING TREE. SET ACAP STAMPED:
 FROM WHICH:
 3" PINE WITH SCRIBING "CP 2 4349 VISIBLE AND
 FOOT BLAZE BEARS N75°E 17.0 FT. (N75°E 17.0 FT. - R3)
 (NEW) 25" Y. PINE BEARS S52°E 53.9 FT. MKD. "CP 2 4349 BT"
- ③ FOUND SCATTERED ROCK MOUND ± 2 FT SOUTH OF RE-
 MONUMENTED LOCATION (DISTURBED AREA - WARD CREEK
 AND ROAD) NO BEARING TREE FOUND. SET ACAP BY
 GRANTS BOUNDARY ADJUSTMENT METHOD (BLM MANUAL)
 HOLDING CORNER NO. 5 OF THE CENTENNIAL PLACER
 CLAIM AND CORNER NO. 4 OF THE CENTENNIAL QUARTZ
 CLAIM.
 FROM WHICH:
 (NEW) 19" CEDAR BEARS N12°W 11.8 FT. MKD. "CP 3 4349 BT"
 (NEW) 22" CEDAR BEARS N71°E 22.2 FT. MKD. "CP 3 4349 BT"
- ④ NOTHING FOUND. CORNER FALLS ON SOUTH EDGE OF
 WARD CREEK. NOTHING SET AT CORNER POSITION. CORNER
 POSITION CALCULATED BY GRANTS BOUNDARY ADJUST-
 MENT METHOD (BLM MANUAL) HOLDING CORNER NO. 5
 OF THE CENTENNIAL PLACER CLAIM AND CORNER NO. 4
 OF THE CENTENNIAL QUARTZ CLAIM.
 FROM WHICH:
 A 3 1/2" ACAP REFERENCE MONUMENT BEARS S33°57'E 30.83 FT.
 STAMPED AS SHOWN.
 WITNESS CORNER TO CENTENNIAL QUARTZ NO. 1 (3 1/2" ACAP)
 BEARS S26°42'W 30.83 FT.
- ⑤ FOUND ORIGINAL BEARING TREE. SET ACAP STAMPED:
 FROM WHICH:
 26" CEDAR WITH SCRIBING "CP 5 4349 BT" VISIBLE
 BEARS S89°W 7.4 FT. (S89°W 7.4 FT. - R3)
 (NEW) 7" D. FIR BEARS N21°E 6.1 FT. MKD. "CP 5 4349 BT"
- ⑥ NOTHING FOUND. CORNER FALLS ON SOUTH EDGE OF
 WARD CREEK. SET WITNESS CORNER BEARS S28°39'43"E
 30.00 FT. STAMPED:
 FROM WHICH:
 (NEW) 18" D. FIR BEARS S38°W 24.2 FT. MKD. "C01 WC 4349 BT"
 (NEW) 12" D. FIR BEARS S14°E 26.1 FT. MKD. "C01 WC 4349 BT"
 (NEW) 20" D. FIR WITH SCRIBING "VM 1 690" VISIBLE BEARS
 S25°E 21.2 FT.
- ⑦ FOUND STONE MOUND WITH 3" O.D. IRON PIPE. REMOVED
 PIPE AND FOUND ROTTED WOOD IN SIDES OF HOLE. SET
 ACAP IN HOLE STAMPED:
 FROM WHICH:
 ± 30" PINE STUMP WITH SCRIBING "CQ 11 4349 BT" ON
 PORTION ON DOWN WOOD BEARS N32°W 108.8 FT. (N32°W
 106.2 FT. - R3)
 ± 25" PINE STUMP WITH SCRIBING "BT" VISIBLE AXE MARKS AND
 CHAINING NOTCH, BEARS S40°E 101.5 FT. (S40°E 100.5 FT. - R3)
 (NEW) 20" D. FIR BEARS N83°W 13.0 FT. MKD. "CQ 2 4349 BT"
 (NEW) 11" CEDAR BEARS S03°E 18.0 FT. MKD. "LS 1 4349 BT"
- ⑧ FOUND ORIGINAL BEARING TREES. SET ACAP STAMPED:
 FROM WHICH:
 17" W. FIR WITH DOUBLE FACE BEARS N80°W 6.8 FT.
 (N80°W 6.8 FT. - R3)
 14" D. FIR WITH DOUBLE FACE BEARS S02°E 41.7 FT.
 (S10°W 41.7 FT. - R3)
- ⑨ FOUND 4"x4" POST WITH SCRIBING "CQ 11 4349" IN M.O.R.
 NO BEARING TREE FOUND. CORNER FITS CALL TO WARD
 CREEK AND MEASUREMENTS TO OTHER CORNERS.
 SET ACAP IN M.O.R. STAMPED:
 FROM WHICH:
 (NEW) 20" D. FIR BEARS N18°E 10.4 FT. MKD. "CQ 4 4349 BT"
 (NEW) 10" D. FIR BEARS N68°W 8.0 FT. MKD. "CQ 4 4349 BT"
- ⑩ FOUND ORIGINAL BEARING TREES. SET ACAP STAMPED:
 FROM WHICH:
 35" D. FIR WITH DOUBLE FACE BEARS N39°E
 44.3 FT. (N38°E 44.3 FT. - R3)
 DEAD 5" B. OAK WITH SCRIBING "B 4" VISIBLE
 BEARS S16°E 17.0 FT. (S15°E 17.0 FT. - R3)
 (NEW) 6" D. FIR BEARS N48°W 12.6 FT. MKD. "BLB 3 4349 BT"
- ⑪ FOUND ORIGINAL BEARING TREES. SET 1"x1" ALUM.
 ROD (STAR-DRILLED) WITH 3/4" ALUM. CAP STAMPED:
 FROM WHICH:
 DEAD 28" D. FIR WITH SCRIBING "CS III 4349" VISIBLE
 AND FOOT BLAZE BEARS N22°W 19.3 FT.
 (N22°W 19.3 FT. - R3)
 30" D. FIR WITH DOUBLE FACE BEARS S22°E 8.2 FT.
 (S22°E 8.2 FT. - R3)
 (NEW) 8" D. FIR BEARS N70°E 41.1 FT. MKD. "CS 3 4349 BT"
- ⑫ FOUND M.O.R. AND POST WITH FAINT SCRIBING. SET ACAP STAMPED:
 FROM WHICH:
 18" CEDAR WITH SCRIBING "BLB 11 4349" VISIBLE AND
 FOOT FACE BEARS N10°E 13.5 FT. (N10°E 13.5 FT. - R3)
 (NEW) 18" Y. PINE BEARS N60°W 14.8 FT. MKD. "BLB 2 4349 BT"
- ⑬ FOUND ORIGINAL BEARING TREE. SET ACAP STAMPED:
 FROM WHICH:
 34" CEDAR WITH SCRIBING "BLB 1 4349" VISIBLE AND
 FOOT FACE BEARS N43°W 34.7 FT. (N42°W
 34.7 FT. - R3)
 (NEW) 6" W. FIR BEARS N20°E 6.4 FT. MKD. "BLB 1 4349 BT"
- ⑭ FOUND ORIGINAL BEARING TREE. SET ACAP STAMPED:
 FROM WHICH:
 24" Y. PINE WITH SCRIBING "B 4349" VISIBLE
 AND FOOT FACE BEARS S46°W 58.5 FT.
 (S48 1/4°W 58.5 FT. - R3)
 (NEW) 12" S. PINE BEARS S42°E 16.9 FT. MKD. "BB 4 4349 BT"
- ⑮ FOUND M.O.R. WITH OLD POST HOLE AND ROTTED WOOD.
 SET 5/8" DRIVE IN ROD 1' LONG IN POST HOLE WITH
 3/4" ALUM. CAP STAMPED:
 FROM WHICH:
 ± 39" PINE STUMP BEARS S21°E 37.5 FT.
 (S21 1/2°E 35.2 FT. - R3)
 (NEW) 8" D. FIR BEARS S48°W 18.1 FT. MKD. "BB 3 4349 BT"
 (NEW) 5 1/2" D. FIR BEARS S51°E 28.5 FT. MKD. "BB 3 4349 BT"

BASIS OF BEARINGS
 THE BASIS OF BEARINGS FOR THE SURVEY IS TRUE
 NORTH AS DETERMINED BY SOLAR OBSERVATION
 USING THE ALTITUDE METHOD.

SURVEY HISTORY
 MINERAL SURVEY # 4349 WAS PERFORMED
 BY HENRY B. BUDD, U.S. DEPUTY MINERAL SURVEYOR,
 IN AUGUST 1904.

- LEGEND**
- FOUND CORNER AS NOTED
 - SET CORNER AS NOTED IN MOUND OF ROCKS
 REPRESENTS SURVEYED MARKED AND
 POSTED BOUNDARY
 - R1 RECORD DATA PER M.S. 4535
 - R2 RECORD DATA PER M.S. 5846
 - R3 RECORD DATA PER M.S. 4349
 - R4 RECORD DATA PER 2 R.S. 117
 - R5 RECORD DATA PER 2 R.S. 118
 - M.O.R. MOUND OF ROCKS
 - ACAP LAP AND PLASTIC BASE MANUFACTURED BY
 BERNSTEIN EXCEPT AS NOTED
 - DIMENSION LINE
 - ⊙ KEY TO CORNER NOTES
 - CALCULATED POINT - NOTHING SET

RECORD OF SURVEY
 FOR
THE PLUMAS NATIONAL FOREST
 J & M ASSOCIATES