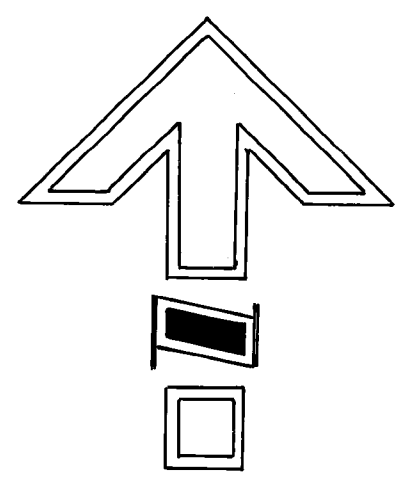
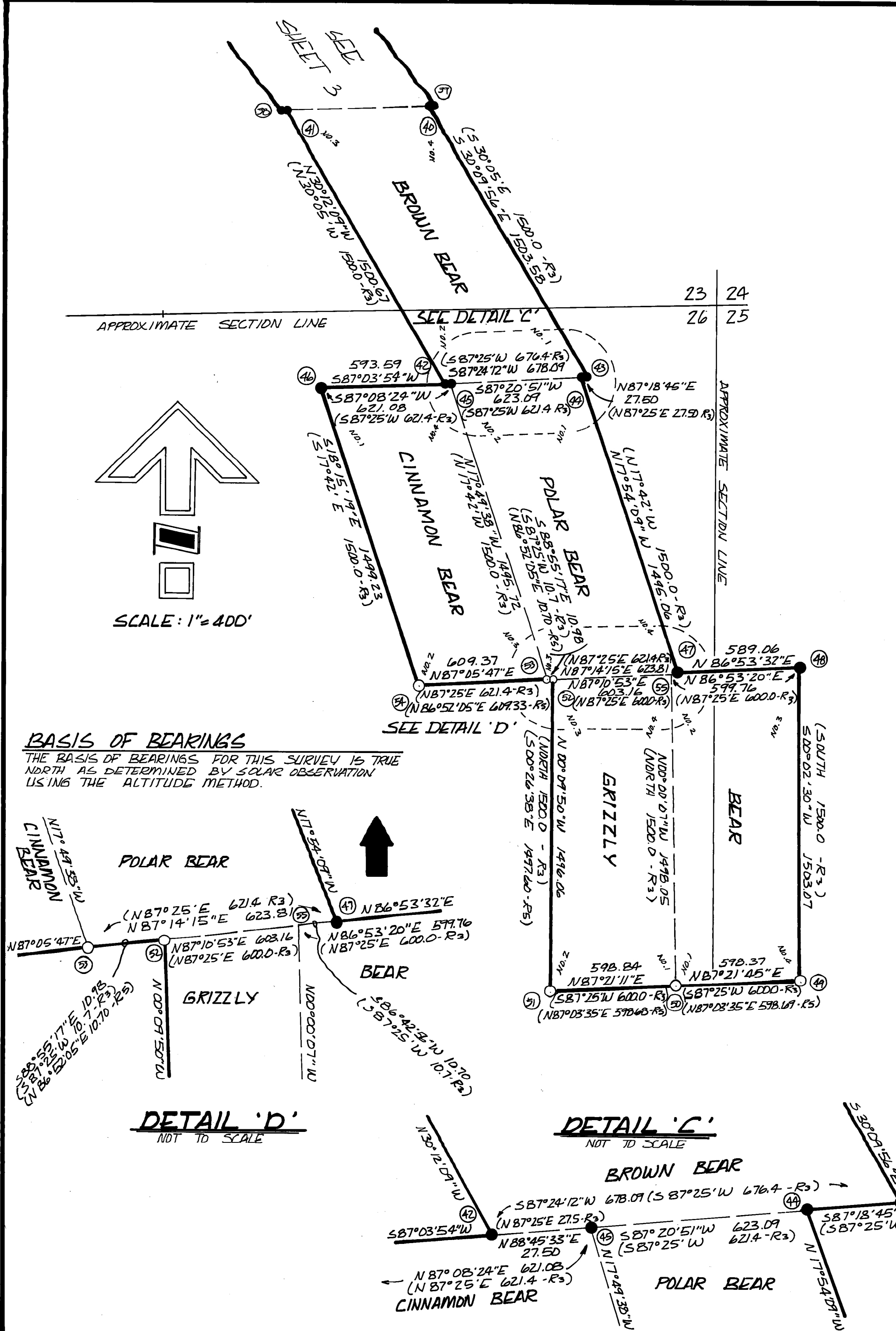


CORNER NOTES

- ① FOUND ORIGINAL BEARING TREE. SET ACAP STAMPED:  
FROM WHICH:  
22" S. PINE WITH DOUBLE FACE BEARS N31°E  
21.2 FT. (N30°40'E 21.2 FT. - R<sub>3</sub>)  
(NEW) 18" Y. PINE BEARS N83°W 52.7 FT. MKD. "BBZ  
4349 BT"
- ② FOUND M.O.R. AND ORIGINAL BEARING TREE. SET ACAP  
IN M.O.R. STAMPED:  
FROM WHICH:  
32" Y. PINE BEARS N9¼°E 19.7 FT.  
(N9°40'E 19.3 FT. - R<sub>2</sub>) WITH SCRIBING "RB 1"  
VISIBLE AND FOOT BLAZE  
(NEW) 9" D. FIR BEARS S81°E 19.5 FT. MKD. "BB 1 4349 BT"
- ③ FOUND OLD POST WITH FAINT SCRIBING. FOUND M.O.R.  
WITH POST HOLE AND ROTTED WOOD. SET ACAP IN  
POST HOLE STAMPED:  
FROM WHICH:  
21" D. FIR WITH SCRIBING "PB 1 4349" VISIBLE  
AND FOOT BLAZE BEARS S65°E 34.2 FT.  
(S65°E 34.2 FT. - R<sub>3</sub>)  
DUG DEBRIS AROUND CREEK AND FOUND REMAINS OF  
ROOT SYSTEM OF FIR BEARS S75°W 17.1 FT.  
(S75°W 17.1 FT. - R<sub>2</sub>)  
(NEW) 6" D. FIR BEARS S72°E 15.3 FT. MKD. "PB 1 4349 BT"  
(NEW) 8" D. FIR BEARS S49°W 15.0 FT. MKD. "PB 1 4349 BT"
- ④ FOUND ORIGINAL BEARING TREES. SET ACAP STAMPED:  
FROM WHICH:  
DEAD 19" FIR WITH SCRIBING "CB IV 4349 BT"  
VISIBLE BEARS S18°W 12.6 FT. (S18°W 12.6 FT. - R<sub>3</sub>)  
12" STUMP HOLE BEARS S55°E 11.4 FT.  
(S55°E 11.4 FT. - R<sub>3</sub>)  
(NEW) 20" S. PINE BEARS N55°W 2.9 FT. MKD. "CB 4 4349 BT"  
(NEW) 10" CEDAR BEARS S07°W 19.4 FT. MKD. "PB 2 4349 BT"
- ⑤ FOUND ORIGINAL BEARING TREE. SET ACAP STAMPED:  
FROM WHICH:  
42" PINE STUMP WITH SCRIBING "BT" BEARS  
EAST 20.0 FT. (EAST 20.0 FT. - R<sub>3</sub>)  
(NEW) 8" D. FIR BEARS N05°E 38.6 FT. MKD.  
"CB 1 4349 BT"  
(NEW) 8" CEDAR BEARS S76°W 25.5 FT. MKD. "CB 1 4349 BT"
- ⑥ FOUND DEPRESSION IN SQUAM CARPET WITH OLD DELAYED  
WOOD (POST?). LOCATION FITS BEARING AND DIST.  
TO CORNER NO. 4 BRIZZLY QUARTZ CLAIM (S87°25'W)  
10.7 FT. AND BEARING TO 4B" PINE STUMP. SET ACAP  
STAMPED:  
FROM WHICH:  
48" PINE STUMP BEARS N15°E 43.4 FT. (N15¼°E 40.4 FT. - R<sub>3</sub>)  
(NEW) 4" D. FIR BEARS N66°E 6.0 FT. MKD. "PB 4 4349 BT"  
(NEW) 6" Y. PINE BEARS N42°W 6.9 FT. MKD. "PB 4 4349 BT"
- ⑦ FOUND POST WITH SCRIBING "B III 4349 IN M.O.R.  
LET ACAP IN M.O.R. STAMPED:  
FROM WHICH:  
22" Y. PINE WITH SCRIBING "B III 4349 BT" BEARS  
SOUTH 10.2 FT. (SOUTH 10.2 FT. - R<sub>3</sub>)  
(NEW) 20" Y. PINE BEARS N80°W 17.9 FT. MKD. "B 3 4349 BT"

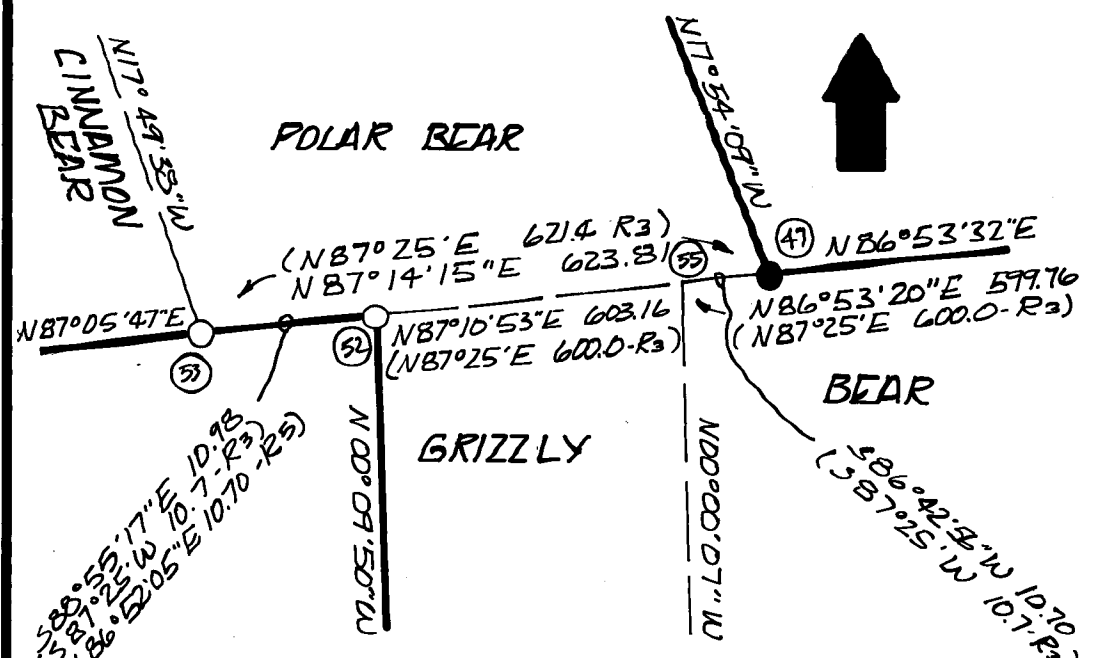
- ⑧ FOUND 3/8" ROD WITH 1 1/2" BRASS CAP STAMPED "T25N R1E B4  
1963 LS 3079" IN M.O.R. FROM WHICH:  
42" PINE STUMP BEARS N33°W 32.5 FT. (N20°W 32.1 FT. - R<sub>2</sub>)  
12" W. FIR WITH FACE BEARS N2¼°W 35.0 FT.  
(N22°59'W 35.0 FT. - R<sub>5</sub>)
- ⑨ FOUND 3/8" ROD WITH 1 1/2" BRASS CAP STAMPED "T25N R1E  
B1 B1 1963 LS 3079" IN M.O.R. FROM WHICH:  
24" CEDAR WITH SCRIBING "BT" VISIBLE BEARS N31°W  
75.2 FT. (N31°53'W 75.1 FT. - R<sub>5</sub>)  
16" D. FIR WITH SCRIBING "BT" VISIBLE BEARS N06¼°E  
63.7 FT. (N06°30'E 63.3 FT. - R<sub>5</sub>)
- ⑩ FOUND 5/8" ROD WITH 1 1/2" BRASS CAP STAMPED "T25N R1E  
B2 1963 LS 3079" IN M.O.R. FROM WHICH:  
16" CEDAR WITH SCRIBING "G11 4349" VISIBLE BEARS  
N35°W 2.8 FT. (N35°W 2.3 FT. - R<sub>3</sub>)
- ⑪ FOUND BENT 3/8" ROD WITH 1 1/2" BRASS CAP STAMPED "T25N  
R1E B3 1963 LS 3079" IN M.O.R. FROM WHICH:  
(20" D. FIR BEARS S02°W 67.4 - R<sub>5</sub>)
- ⑫ FOUND 5/8" ROD WITH 1 1/2" BRASS CAP STAMPED "T25N R1E  
CB3 PB3 1963 LS 3079" IN M.O.R. FROM WHICH:  
26" FIR STUMP BEARS N10°E 11.6 FT. (N04°40'E 11.6 FT. - R<sub>3</sub>)  
36" W. FIR WITH SCRIBING VISIBLE BEARS N83°W 31.9 FT.  
(N82°20'W 31.4 FT. - R<sub>3</sub>)  
12" W. FIR WITH CLOSED FACE BEARS S12¼°E 12.0 FT.  
(S12°22'E 11.9 FT. - R<sub>5</sub>)
- ⑬ FOUND 3/8" ROD WITH 1 1/2" BRASS CAP STAMPED "T25N R1E CB2  
1963 LS 3079" IN M.O.R. FROM WHICH:  
14" DEAD AND DOWN S. PINE BEARS N24¼°W 7.4 FT.  
(N15°W 8.0 FT. - R<sub>3</sub>); CUT AND FOUND SCRIBING "BT"  
20" CEDAR WITH FACE BEARS N10°E 6.0 FT.  
(N10°E 6.0 FT. - R<sub>5</sub>)
- ⑭ FOUND SCATTERED M.O.R. AT CORNER POSITION. FOUND STUMPS  
OF ORIGINAL BEARING TREES. FOUND 4" CEDAR STUMP  
FITS BEARING AND DISTANCE TO M.O.R. FOUND 24" FIR  
STUMP FITS BEARING AND DISTANCE TO M.O.R. NOTHING  
SET AT CORNER POSITION.  
(8" SPRUCE N87°W 33.5 FT. - R<sub>3</sub>)  
(4" CEDAR S 8°E 12.0 FT. - R<sub>3</sub>)



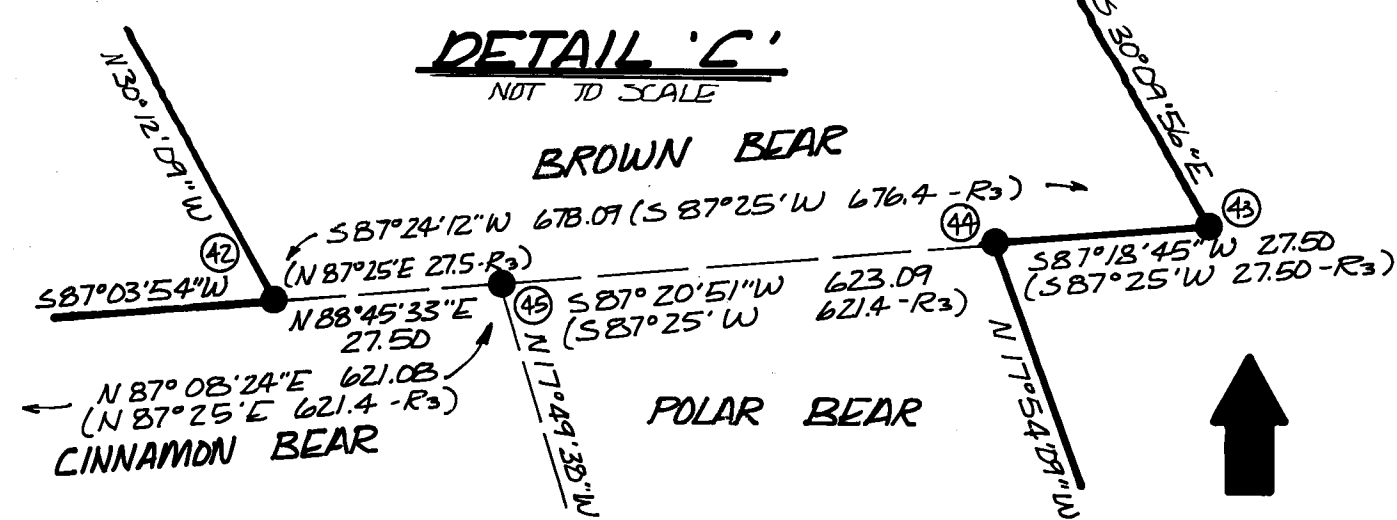
SCALE: 1" = 400'

BASIS OF BEARINGS

THE BASIS OF BEARINGS FOR THIS SURVEY IS TRUE NORTH AS DETERMINED BY SOLAR OBSERVATION USING THE ALTITUDE METHOD.



DETAIL 'D' NOT TO SCALE



DETAIL 'C' NOT TO SCALE

LEGEND

- FOUND CORNER AS NOTED
- SET CORNER AS NOTED IN MOUND OF ROCKS REPRESENTS SURVEYED, MARKED AND FIXED BOUNDARY
- R1 RECORD DATA PER M.S. 4535
- R2 RECORD DATA PER M.S. 5846
- R3 RECORD DATA PER M.S. 4349
- R4 RECORD DATA PER Z.R.S. 117
- R5 RECORD DATA PER Z.R.S. 118
- M.O.R. MOUND OF ROCKS
- ACAP 2 1/4" x 30" ALUM. PIPE MONUMENT WITH 3/4" ALUM. CAP AND PLASTIC BASE MANUFACTURED BY BERNSTEIN, EXCEPT AS NOTED
- DIMENSION LINE
- Ⓢ KEY TO CORNER NOTES
- CALCULATED POINT - NOTHING SET

RECORD OF SURVEY FOR THE PLUMAS NATIONAL FOREST J & M ASSOCIATES

AUGUST 1985

SHEET 4 OF 4