

State Hwy ROW

AA	2700' R	Δ = 40°31'54"	L = 1910.01' (-A)
AB	2785' R	Δ = 07°25'38"	L = 361.02' (-C)
AC	2785' R	Δ = 02°07'19"	L = 103.14'
AD	10.00'	(S06°02'22"W - C)	S05°53'34"W
AE	2775' R	Δ = 17°45'13"	L = 859.86' (A=17°44'41" L=859.43'-A)
AF	2775' R	(Δ = 18°18'13"	L = 886.83' -D)
AG	2775' R	Δ = 00°33'57"	L = 27.40' (-D)
AH	27.32'	(S65°39'E -D)	S65°47'48"E
AI	(34.80')	(S54°21'W -D)	34.68' S54°12'12"W
AJ	20.00'	(S65°39'E -D)	S65°47'48"E
AK	34.64'	(N05°39'W -D)	S05°47'48"E
AL	372.55'	(S65°39'E -D)	S65°47'48"E

Note: State & Deed bearings rotated 0°08'48" CCW to match Basis of Bearings

Co. Rd. 508 Centerline

A	417.92'	N 8°54'52"E
B	114.54'	N78°34'45"E
C	174.22'	S30°32'27"E
D	212.33'	N72°57'47"E
E	220.19'	S 1°11'40"W
F	170.77'	N75°58'36"E
G	245.95'	N42°06'22"E
H	137.46'	N10°37'24"W
I	221.69'	N61°51'08"E
J	122.50'	N87°05'39"E
K	68.41'	N71°03'52"E
L	178.02'	N60°53'06"E
M	51.80'	N 41°00'28"E
N	334.60'	N 21°09'42"E
O	173.85'	S 88°22'18"E
P	98.93'	N82°58'35"E
Q	61.07'	S01°11'40"W
R	30.31'	N82°58'35"E (30' ROW)
S	60.56'	N42°06'22"E
T	45.84'	N82°58'35"E (30' ROW)

fd. witness corner

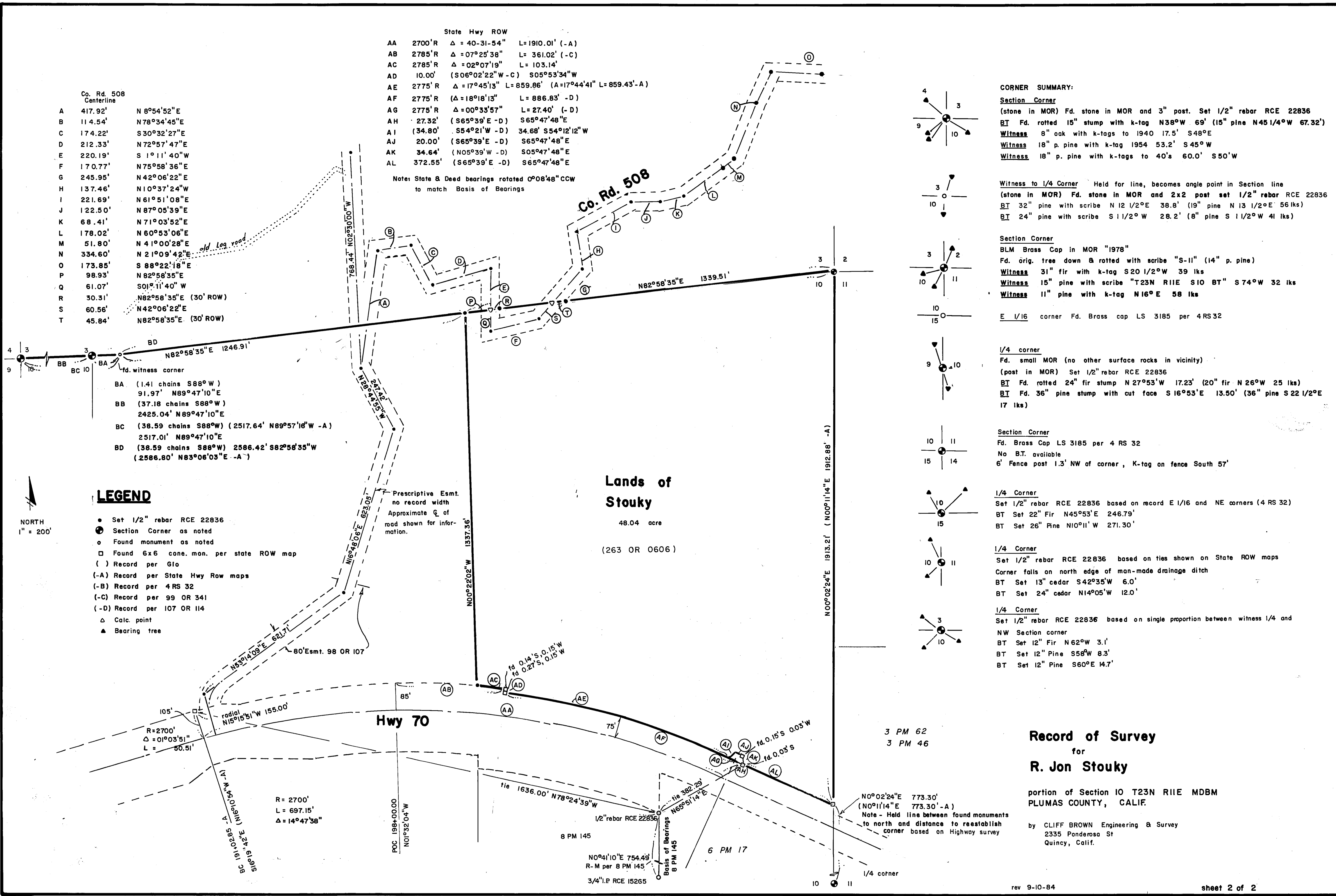
BA	(1.41 chains S88°W)	91.97' N89°47'10"E	
BB	(37.18 chains S88°W)	2425.04' N89°47'10"E	
BC	(38.59 chains S88°W)	(2517.64' N89°57'16"W -A)	2517.01' N89°47'10"E
BD	(38.59 chains S88°W)	2586.42' S82°58'35"W	(2586.80' N83°06'03"E -A)

LEGEND

- Set 1/2" rebar RCE 22836
- ⊙ Section Corner as noted
- Found monument as noted
- Found 6x6 cone. mon. per state ROW map
- () Record per Glo
- (-A) Record per State Hwy Row maps
- (-B) Record per 4 RS 32
- (-C) Record per 99 OR 341
- (-D) Record per 107 OR 114
- △ Calc. point
- ▲ Bearing tree

Lands of Stouky

48.04 acre
(263 OR 0606)



CORNER SUMMARY:

Section Corner
(stone in MOR) Fd. stone in MOR and 3" post. Set 1/2" rebar RCE 22836
BT Fd. rotted 15" stump with k-tag N38°W 69' (15" pine N45 1/4°W 67.32')
Witness 8" oak with k-tags to 1940 17.5' S48°E
Witness 18" p. pine with k-tag 1954 53.2' S45°W
Witness 18" p. pine with k-tags to 40's 60.0' S50°W

Witness to 1/4 Corner Held for line, becomes angle point in Section line (stone in MOR) Fd. stone in MOR and 2x2 post set 1/2" rebar RCE 22836
BT 32" pine with scribe N 12 1/2°E 38.8' (19" pine N 13 1/2°E 56 lks)
BT 24" pine with scribe S 11 1/2°W 28.2' (8" pine S 11 1/2°W 41 lks)

Section Corner
BLM Brass Cap in MOR "1978"
Fd. orig. tree down & rotted with scribe "S-11" (14" p. pine)
Witness 31" fir with k-tag S20 1/2°W 39 lks
Witness 15" pine with scribe "T23N R11E S10 BT" S74°W 32 lks
Witness 11" pine with k-tag N16°E 58 lks

E 1/16 corner Fd. Brass cap LS 3185 per 4RS32

1/4 corner
Fd. small MOR (no other surface rocks in vicinity)
(post in MOR) Set 1/2" rebar RCE 22836
BT Fd. rotted 24" fir stump N27°53'W 17.23' (20" fir N26°W 25 lks)
BT Fd. 36" pine stump with cut face S16°53'E 13.50' (36" pine S22 1/2°E 17 lks)

Section Corner
Fd. Brass Cap LS 3185 per 4 RS 32
No B.T. available
6' Fence post 1.3' NW of corner, K-tag on fence South 57'

1/4 Corner
Set 1/2" rebar RCE 22836 based on record E 1/16 and NE corners (4 RS 32)
BT Set 22" Fir N45°53'E 246.79'
BT Set 26" Pine N10°11'W 271.30'

1/4 Corner
Set 1/2" rebar RCE 22836 based on ties shown on State ROW maps
Corner falls on north edge of man-made drainage ditch
BT Set 13" cedar S42°35'W 6.0'
BT Set 24" cedar N14°05'W 12.0'

1/4 Corner
Set 1/2" rebar RCE 22836 based on single proportion between witness 1/4 and NW Section corner
BT Set 12" Fir N62°W 3.1'
BT Set 12" Pine S58°W 8.3'
BT Set 12" Pine S60°E 14.7'

Record of Survey
for
R. Jon Stouky

portion of Section 10 T23N R11E MDBM
PLUMAS COUNTY, CALIF.

by CLIFF BROWN Engineering & Survey
2335 Ponderosa St
Quincy, Calif.