

ABBREVIATIONS

R.M.	Reference Monument consisting of a Std. U.S.F.S. Alum. pipe and cap set in a m.o.r. stamped w/ year set, R.M. and → toward actual corner, Corner information & R.C.E. 14203
LSM	Land Survey Monument
m.o.r.	Mound of rocks
Manual	Manual of Instructions for the Survey of the Public Lands of the United States (1973 Edition)
H.B.	Healed blaze
Fd.	Found during the process of this survey
w/	with
w/o	without
B.T.	Bearing Tree
Monu.	Monument
±	Centerline
U.S.F.S.	U.S. Department of Agriculture Forest Service
I.P.	Iron or steel pipe (Inside diam. given if any)
B.L.M.	Bureau of Land Management
New	Set or established as part of this Survey
S.C.	Standard Corner
C.C.	Closing Corner
S.P.M.	Single porportionate measurement
D.P.M.	Double " "
D.I.	Diamond Internation Corp.
N.A.	Not applicable since corner was not set by G.L.O.
do "	Same information as shown immediately above
W.C.	Witness Corner set on property or section line
39 R.S. 25	Record of Survey recorded in Book 39 at page 25
40 P.M. 27	Parcel Map recorded in Book 40 at page 27
Cor.	Corner
Orig.	Original (established by the initial survey)
G.L.O.	General Land Office
R.T.	Reference Tree (Not scribed)
Alum.	Aluminum
B.C.	Brass Cap
179 O.R. 17	Deed recorded in Book 179 at page 17 of the Official Records
(A)	Record Reference - See Prior Survey History
B. & D.	Bearing and Distance
Pt.	Point
N.T.S.	Not to Scale

LEGEND

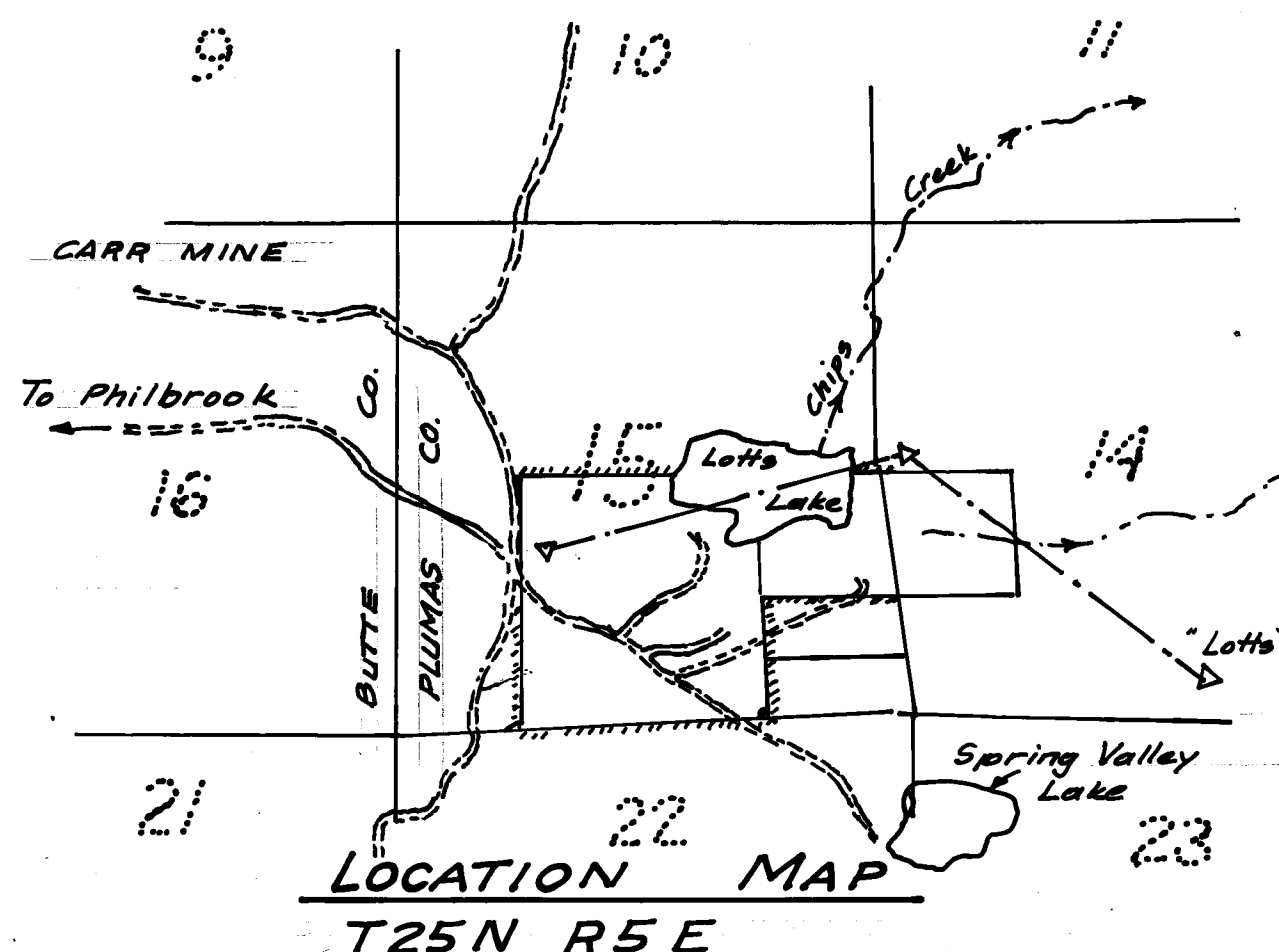
SYMBOL	DESCRIPTION
1051	Corner Number used by this Survey
Δ	Control point used or established by this Survey
+	Set Standard U.S.F.S. Alum. Monu. stamped as per Manual at Cor. position in painted m.o.r. w/ LSM sign on post set nearby. See Corner Data by Corner Number
+	Actual Corner position is unacceptable for a permanent monu., therefore a R.M. was set.
○	Corner searched for by this Survey but not fd.
—	Calculated cor. but nothing set
	Boundary line of U.S.F.S. property. Hash marks are on Government side of line.
—	Section and fractional section lines.
---	Control line or Traverse used to establish California Coordinates for this Survey
φ	Diameter
() (A)	Information or data as per previously filed or Recorded surveys. See Prior Survey History
+	Corner fd. and used by this Survey. See Corner data by Cor. number
—	Line not drawn to Scale
○	Set 3/4" Diam. I.P. w/ LSM sign on nearby post. See Corner data by Corner Number
—	Schematic Location of Topo feature N.T.S.

NOTES

- The Basis of Bearing of this Survey is the California State Coordinate System, Zone I, established as indicated herein.
- The Mapping angle $\theta = +0^{\circ}18'19"$ @ Sta. " Bottle 5 miles ± to the S.W.
- All distances shown herein are Grid distances. To obtain Ground distances, multiply all distances shown herein by 1.00023466.
- All bearings given for accessories, R.M., W.C. & R.T. are from the corner toward the accessory
- All B.T. established by this Survey were banded w/ paint, received U.S.F.S. B.T. sign & "Attention" sign and were scribed in accordance with the Manual, & have Brass tags @ B. & D. pts.
- Calif. Coordinates shown thus: N. Coord. (y)
E. Coord. (x)

PRIOR SURVEY HISTORY

Rec. Ref.	Surveyor	Location	Date
(A)	James O'Brien Dep. Surveyor	T25N, R5E M.D.B. & M.	1878
(B)	F. Wayne Forrest	Sec. 23, T25N, R5E	1939 of G.L.O.



RECORDER'S CERTIFICATE

Filed this 8th day of November, 1985
 at 1:40 P.M. in Book 7 of Record of Surveys
 at Pages 58-60 at the request of the County
 Engineer # 3284
 # 900
 I/A Disas
 County Recorder
 by Patricia Lacey
 Deputy County Recorder

SURVEYOR'S STATEMENT

This Map correctly represents a Survey made by me or under my direction in conformance with the requirements of the Land Surveyor's Act at the request of the U.S. Forest Service between 1982 and 1985.

Everd A. McCain RCE 14203

COUNTY SURVEYOR'S STATEMENT

This Map has been examined in accordance with Section 8766 of the Land Surveyors Act this 8th day of November, 1985

Lawrence J. Brock RCE 13528
 Plumas County Engineer

RECORD OF SURVEY

OF A PORTION OF SEC. 15, T25N, R5E M.D.M.
 FOR THE U.S. FOREST SERVICE
 IN THE UNINCORPORATED AREA OF PLUMAS COUNTY

McCain Associates
 40 S. LASSEN ST. SUBANVILLE, CALIF.
 CONSULTING ENGINEERS SURVEYORS

