

The cor. of secs. 3, 4, 33, and 34 on the North bdy. of T. 26N., R. 10E., M.D.M. monumented w/ a B.L.M. brass cap mon. in a m.o.s. mkd.

T27NR10E  
S33 | S34  
S4 | S3  
T26N  
1970

f.w.b. an 11" Bk. Oak N26°04'E 39.9 lks. w/ hld. blz. (R1: N21°E 38 lks.; R2: N27°E 40 lks.)  
a 27" Cedar S20°39'E 54.6 lks. w/ scb. mks. on partially hld. blz. (R2: S21°E 54 lks.)  
a 6" Cedar S74°11'W 46.8 lks. w/ scb. mks. on partially hld. blz. (R2: S74°W 47 lks.)

a 13" L. Oak N22°41'W 75.7 lks. w/ scb. mks. on partially hld. blz. (R2: N22°W 76 lks.)  
a 5" Bk. Oak N62°38'W 21.6 lks. w/ opened, rotted blz. (R1: N65 1/2°W 29 lks.; R2: N64°W 23 lks.)

The 1/4 sec. cor. of secs. 3 and 4, monumented w/ a 1" i.p. in a m.o.s. and is accepted as a careful and faithful perpetuation of the position of the orig. cor. (R3: 1" i.p. tagged RCE 11126)  
f.w.b. a 40" P. Pine N66°27'E 29.1 ft. w/ scb. mks. on partially hld. blz., brass disc mkd. "RINGEL & ASSOCIATES, INC. SURVEY POINT CHICO/ORLAND" and location poster dated 1949. (not of record) and new bearing trees

a 29" Cedar S88°45'E 29.9 ft. mkd. 1/4 S3BT"  
a 26" Fir N88°05'W 65.0 ft. mkd. 1/4 S4BT"  
The cor. of secs. 3, 4, 9, and 10, monumented w/ a B.L.M. brass cap mon. in a m.o.s. mkd.

T26NR10E  
S4 | S3  
S9 | S10  
1970

f.w.b. a 24" Bk. Oak N23°57'E 101.4 lks. w/ opened, rotted blz. (R1: N23 3/4°E 96 lks.; R2: N25°E 99 lks.)  
a 17" Fir N50°57'E 19.3 lks. w/ hld. blz. (R2: N51°E 19 lks.)  
a 15" Cedar S67°34'E 44.1 lks. w/ scb. mks. on partially hld. blz. (R2: S67°E 45 lks.)

a Bk. Oak stump hole S34°38'E 123.9 lks. (R1: S33°E 130 lks.; R2: S37°E 115 lks.)  
an 8" Bk. Oak S4°23'W 42.0 lks. w/ hld. blz. (R2: S4°W 44 lks.)

The 1/4 sec. cor. of secs. 9 and 10, monumented w/ a B.L.M. brass cap mon. in a m.o.s. mkd.  
T26NR13E  
1/4  
S9 | S10  
1970

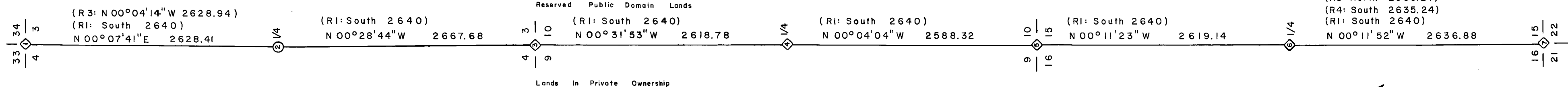
f.w.b. a 7 1/2" Bk. Oak S27°50'W 101.1 lks. w/ scb. mks. on partially hld. blz. (R2: S28°W 104 lks.)  
a 5" Bk. Oak N58°27'E 62.0 lks. w/ scb. mks. on partially hld. blz. (R2: N59°E 64 lks.)

The cor. of secs. 9, 10, 15, and 16, monumented w/ a B.L.M. brass cap mon. in a m.o.s. mkd.  
T26NR10E  
S9 | S10  
S16 | S15  
1970

f.w.b. a 7" Fir N30°42'E 15.2 lks. w/ hld. blz. (R2: N31°E 15 lks.)  
a 14" Bk. Oak S49°01'E 34.7 lks. w/ hld. blz. (R1: S49 1/4°E 36 lks.; R2: S49 1/2°E 34 lks.)  
a 13" Fir S61°37'W 53.4 lks. w/ hld. blz. (R2: S62°W 54 lks.)  
a 15" Bk. Oak N14°24'W 10.7 lks. w/ hld. blz. (R1: N15°W 10 lks.; R2: N12°W 10 lks.)

The 1/4 sec. cor. of secs. 15 and 16, monumented by the orig. cor. tree, a 32 1/2" P. Pine w/ scb. mks. on an opened, northfacing blz. (R1: 14" Pitch Pine)

f.w.b. a B.L.M. brass cap mon. in a m.o.s. for reference mon. N44°13'08"E 15.2 lks. w/ cap mkd. "RM T26NR10E S15 10 FEET TO 1/4 COR 1970" and an arrow pointing to the cor. tree (R2: N45°E 15.2 lks.)  
a 9" Bk. Oak N76°34'E 38.3 lks. w/ scb. mks. on partially hld. blz. (R2: N77°E 38 lks.)  
a 6 1/2" Cedar S77°35'W 33.0 lks. w/ scb. mks. on partially hld. blz. (R2: S77°W 33 lks.)



LEGEND

- Found BLM brass cap mon. w/ accessories as noted
- Found 1" i.p. w/ accessories as noted
- Found 1/2" rebar tagged RCE 11173
- Found 1/2" rebar tagged RCE 22836

Note: The section lines shown on this map are blazed and posted for the purpose of delineating US Government land administered by the Plumas National Forest

SCALE 1" = 800'



BASIS OF BEARING

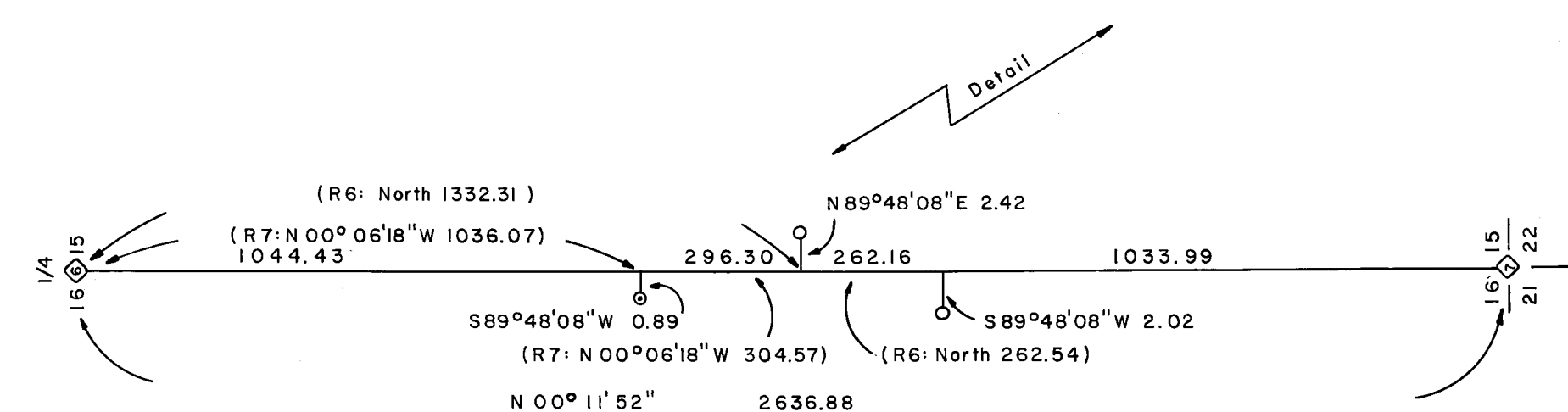
The bearings shown on this map are based on True North as established by the mean of solar observations made in the vicinity of the section corner common to Sections 15, 16, 21, and 22, T. 26N., R. 10E., M.D.M. on October 1, 1985. Latitude: 40° 06' 33" Longitude: 120° 51' 33"

ABBREVIATIONS

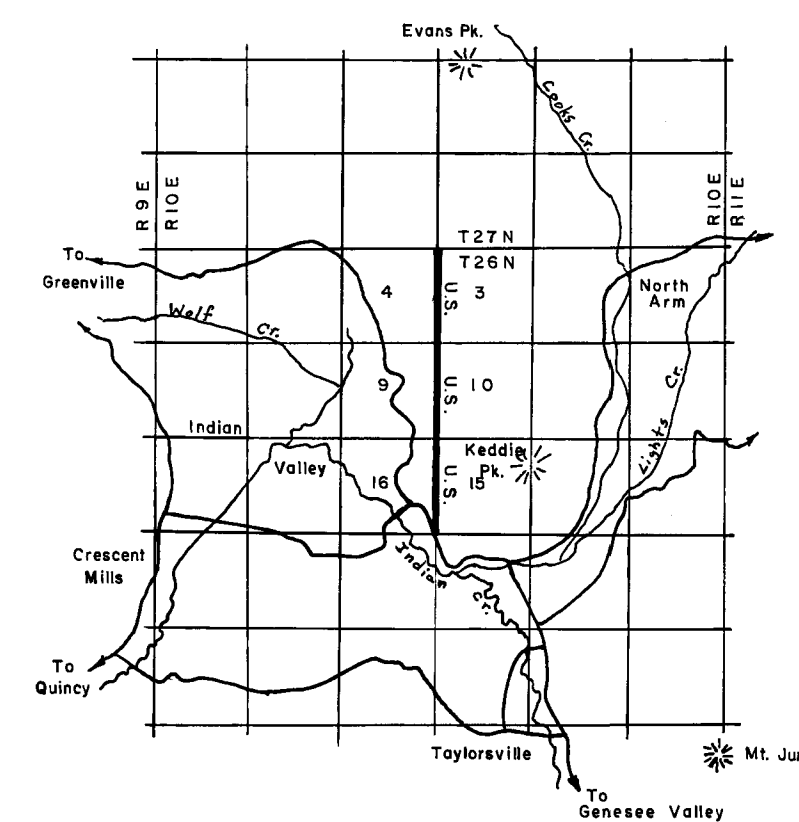
cor.	corner	B.L.M.	U.S. Department of Interior, Bureau of Land Management
sec.	section	P. Pine	Ponderosa Pine
secs.	sections	Bk. Oak	Black Oak
bdy.	boundary	L. Oak	Live Oak
mon.	monument	lks.	links
i.p.	iron pipe	ft.	feet
	(inside diameter)	hld.	healed
orig.	original	blz.	blaze
m.o.s.	mound of	scb.	scribe
	stone	mks.	marks
f.w.b.	from which bears	mkd.	marked
w/	with		

SURVEY HISTORY

- R1: Original public land survey executed by D.D. Brown, U.S. Deputy Surveyor under his contract of Aug. 10, 1869.
- R2: B.L.M. remonumentation of original corners executed by A. Sydlik under Special Instructions dated July 8, 1969 for Group No. 561.
- R3: Survey by Paul E. Simpson, L.S. 3202, shown in Book 4 of Parcel Maps at page 82A, Plumas County Recorder's Office.
- R4: Survey by Darrell P. Payne, R.C.E. 8596, shown in Book 5 of Parcel Maps at page 59, Plumas County Recorder's Office.
- R5: Survey by John C. Simpson, R.C.E. 11173, shown in Book 3 of Parcel Maps at page 70, Plumas County Recorder's Office.
- R6: Survey by John C. Simpson, R.C.E. 11173, shown in Book 5 of Parcel Maps at page 23, Plumas County Recorder's Office.
- R7: Survey by Clifford R. Brown, R.C.E. 22836, shown in Book 5 of Maps at page 149, Plumas County Recorder's Office.



Detail not to scale



VICINITY MAP  
Scale 1/2" = 1 mile

The cor. of secs. 15, 16, 21, and 22, monumented w/ a B.L.M. brass cap mon. in a m.o.s. mkd.

T26NR10E  
S16 | S15  
S21 | S22  
1970

f.w.b. an 11" P. Pine N40°32'E 53.0 lks. w/ scb. mks. on partially hld. blz. (R2: N41°E 53 lks.)  
a 51" P. Pine S73°39'E 67.0 lks. w/ scb. mks. on opened blz. (R1 and R2: S73 1/2°E 65 lks.)  
an 11" P. Pine S32°26'E 24.0 lks. w/ hld. blz. (R2: S32°E 24 lks.)  
a 15" P. Pine N10°31'W 113.5 lks. w/ scb. mks. on partially hld. blz. (R2: N10°W 114 lks.)

SURVEYOR'S STATEMENT

This map correctly represents a survey made by me or under my direction in conformance with the requirements of the Land Surveyors' Act at the request of the Plumas National Forest in September, 1985.

Robert A. Grauberger  
Robert A. Grauberger, LS 5287

COUNTY SURVEYOR'S STATEMENT

This map has been examined in accordance with Section 8766 of the Land Surveyors' Act with 28th day of January, 1986.

Lawrence J. Brock  
Lawrence J. Brock, RCE 13528  
Plumas County Surveyor

COUNTY RECORDER'S CERTIFICATE

Filed this 29 day of January, 1986, at 9:06 A.M. in Book 7 of Records of Survey at page 65, at the request of the Plumas County Surveyor.

Fee \$500  
File No. 4638

Ila Diggs  
Plumas County Recorder

by Patricia Lacey  
Deputy

RECORD OF SURVEY

A retracement of the section lines common to Sections 3 and 4, 9 and 10, and 15 and 16, T. 26N., R. 10E., M.D.M. in the unincorporated area of Plumas County for the Plumas National Forest.

Robert A. Grauberger, LS 5287  
Plumas National Forest

Cadastral Surveys  
Sept. 1985