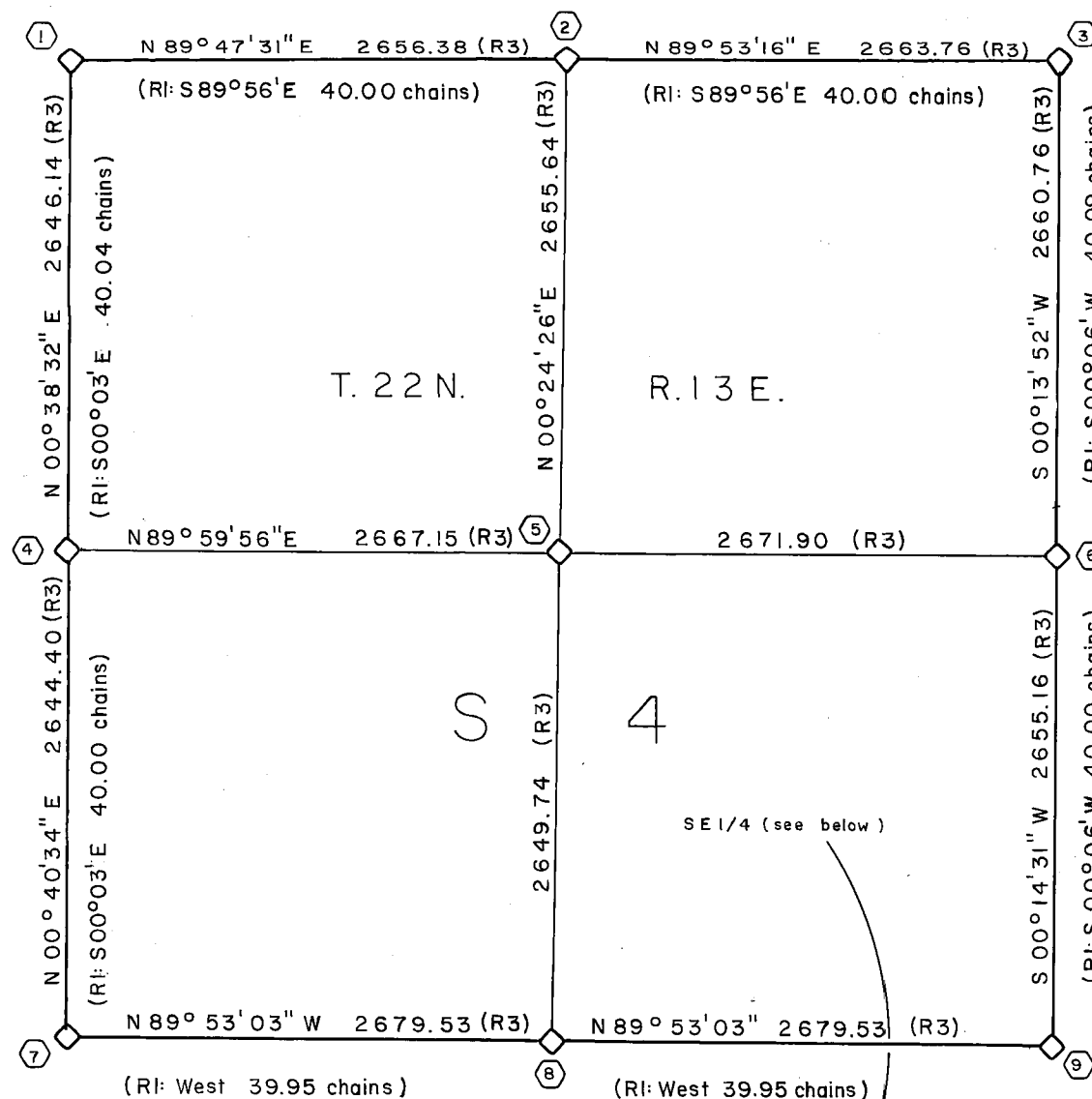


4 RS89 & 1 PM34



Scale 1"=1,000'

**BASIS OF BEARINGS**

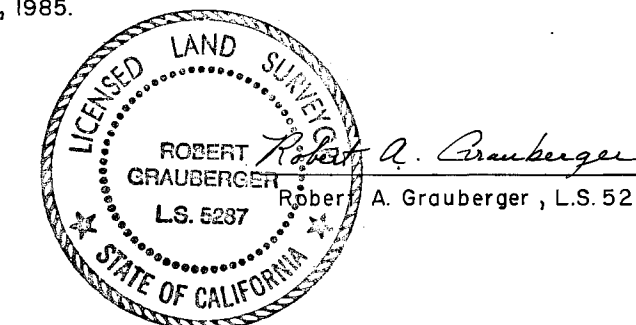
The basis of bearings shown on this map is True North as determined by the mean of solar observations made at United States Coast and Geodetic Survey Triangulation Station "DELL" on November 19, 1984  
 Latitude: 39° 48' 04.237"  
 Longitude: 120° 30' 58.334"

**STATION DELL BEARS S24°28'W 2048.8' FROM THE N.E. CORNER OF SECTION 4**



**SURVEYOR'S STATEMENT**

This map correctly represents a survey made by me or under my direction in conformance with the requirements of the Land Surveyors' Act at the request of the Plumas National Forest in November, 1985.



**COUNTY SURVEYOR'S STATEMENT**

This map has been examined in accordance with Section 8766 of the Land Surveyors' Act this 22<sup>nd</sup> day of August, 1986.

*Lawrence J. Brock*  
 Lawrence J. Brock, RCE 13528  
 Plumas County Surveyor

**HISTORY OF PUBLIC LAND SURVEYS**

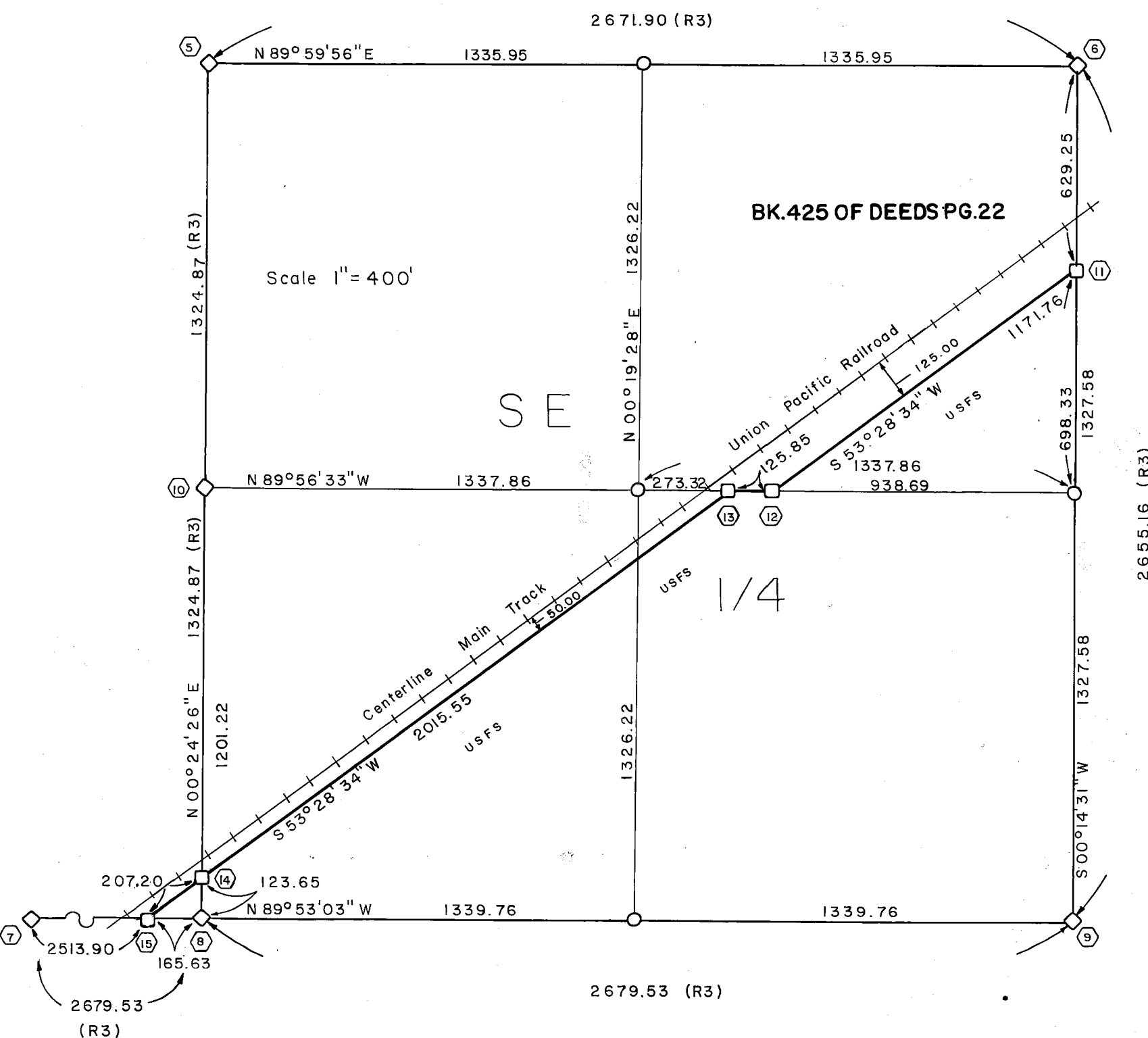
- R1: Original township boundary and subdivision survey executed by A.W. Keddle, U.S. Deputy Surveyor, in 1872
- R2: Remonumentation of certain original corners by R.G. Williams and A.M. Rauch, Bureau of Land Management, 1973
- R3: Dependent resurvey of a portion of the township boundary and sectional lines, the survey of the subdivision of Section 4, and the metes-and-bounds survey of a portion of State Hwy. No. 70, executed by W.G. Snow, U.S. Cadastral Surveyor, under special instructions for Group No. 906, 1985

**RECORDER'S CERTIFICATE**

Filed this 22<sup>nd</sup> day of August, 1986, at 10:50 A.M. in Book 7 of Records of Survey at page 83183, at the request of the Plumas County Surveyor.

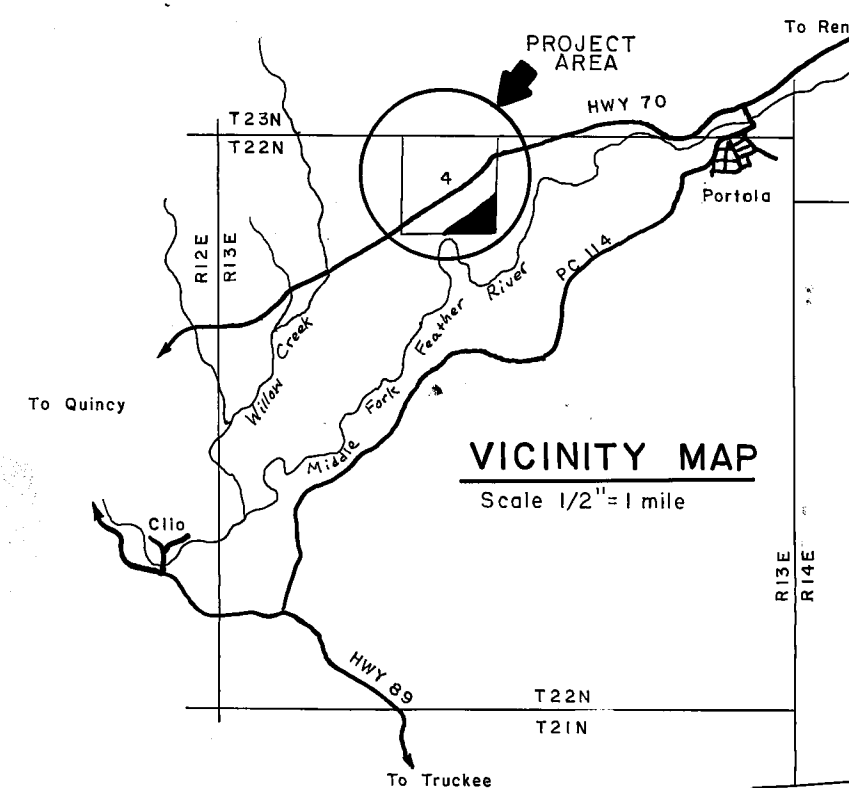
Fee: \$ 7.00 Ila Diggs  
 File No: 1302 Plumas County Recorder

by *Beth Cammack*  
 Deputy



**LEGEND**

- ◊ Found: 28" iron post 2 1/2" Dia. Bureau of Land Management brass cap monument
- Set: 5/8" x 36" aluminum rod with 3/2" Dia. U.S. Forest Service aluminum cap monument
- Calculated position, nothing set
- Corner note number, see Sheet 2
- +— Union Pacific Railroad, main track centerline
- USFS U.S. Government land administered by the Plumas National Forest



**RECORD of SURVEY**

Located in Section 4, T.22N., R.13 E., M.D.M. in the unincorporated area of Plumas County for the Plumas National Forest

Robert A. Graubeger, L.S. 5287