

**SURVEYOR'S STATEMENT**

THIS MAP CORRECTLY REPRESENTS A SURVEY MADE BY ME OR UNDER MY DIRECTION IN CONFORMANCE WITH THE REQUIREMENTS OF THE LAND SURVEYORS' ACT AT THE REQUEST OF THE PLUMAS NATIONAL FOREST IN AUGUST 1986

Mark D. Filsinger  
MARK D. FILSINGER S 4976  
exp. 12-31-89

**COUNTY SURVEYOR'S STATEMENT**

THIS MAP HAS BEEN EXAMINED IN ACCORDANCE WITH SECTION 8760 OF THE LAND SURVEYORS' ACT THIS 1st DAY OF October 1986

Lawrence J. Brock  
By R. Tom Hunter RCE 30515  
LAWRENCE J. BROCK RCE 13528  
PLUMAS COUNTY SURVEYOR

**RECORDER'S CERTIFICATE**

FILED THIS 2nd DAY OF October 1986, AT 9:05 A.M. IN BOOK 7 OF RECORD OF SURVEYS AT PAGE 85-88 AT THE REQUEST OF the County Engineer

FILE # 1102  
FILE NO. 2874  
I LA DIGGS  
PLUMAS COUNTY RECORDER  
By Jeffrey J. Reavis  
DEPUTY

**BASIS OF BEARINGS**

SOLAR OBSERVATION TAKEN 850 FT. NORTHWEST OF THE SECTION CORNER COMMON TO SECTIONS 1, 2, 7 & 12, T.25N., R.8E., USING THE ALTITUDE METHOD ON AUGUST 27, 1985.  
LATITUDE: 40°03'06" NORTH

NOTE: MONUMENTS SET PER THIS SURVEY ARE BERNSTEIN BREAK-OFF MONUMENTS 30" LONG WITH 2 1/2" ALUM. PIPE AND 3/4" ALUM. CAP. BREAK-OFF BASE IS PLASTIC WITH A MAGNET INSIDE.

**RECORD OF SURVEY**

FOR  
**U.S.D.A. - PLUMAS NATIONAL FOREST**  
**'SODA' CADASTRAL SURVEY**

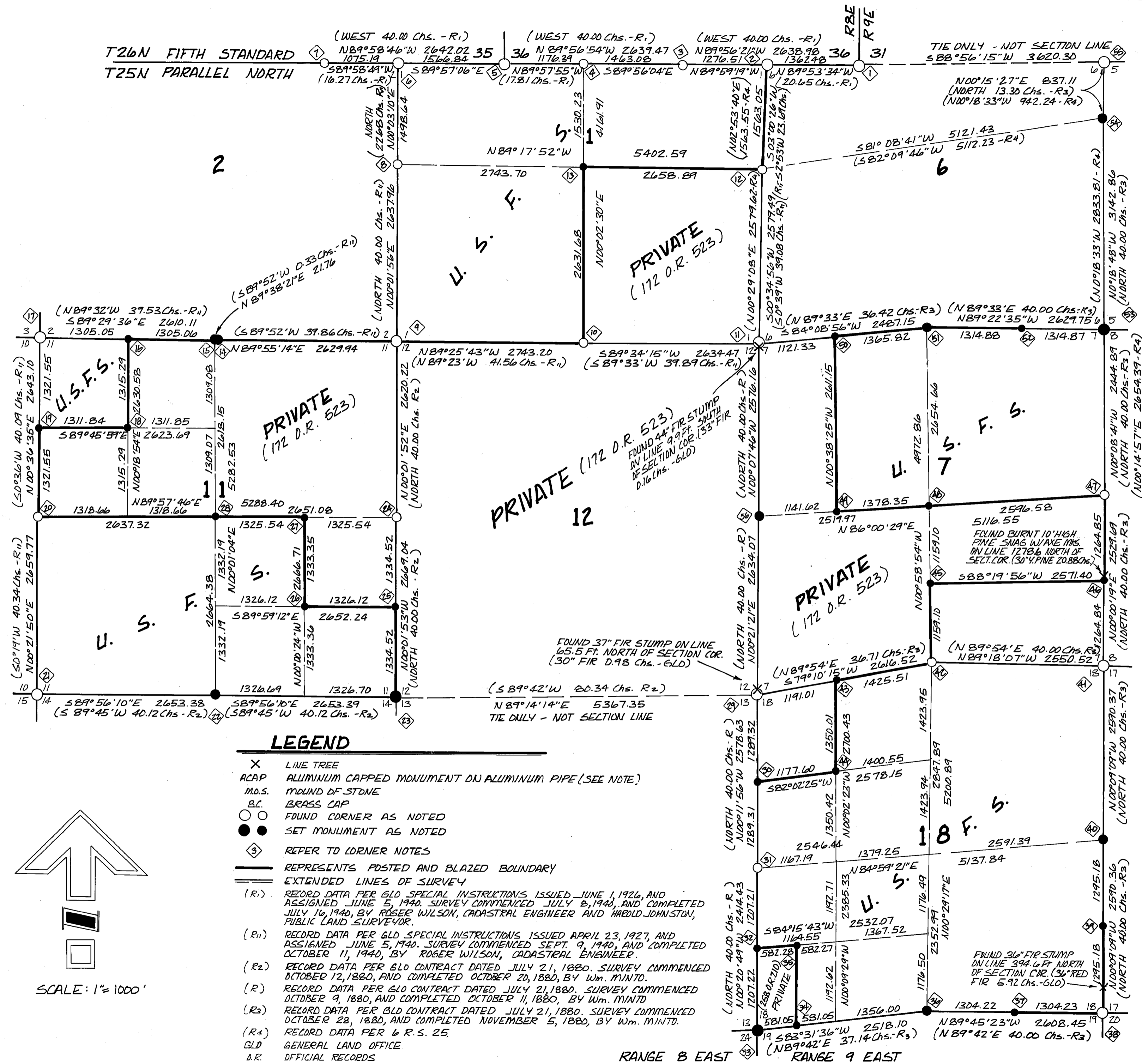
LOCATED IN SECTIONS 1 & 11, TOWNSHIP 25 NORTH, RANGE 8 EAST AND SECTIONS 6, 7 & 18 TOWNSHIP 25 NORTH, RANGE 9 EAST, MOUNT DIABLO MERIDIAN, PLUMAS COUNTY, CALIFORNIA.

**MARK D. FILSINGER**  
**LAND SURVEYOR**

473 BELL LANE  
QUINCY CALIF. 95971  
P.O. BOX 3108  
(916) 283-0754

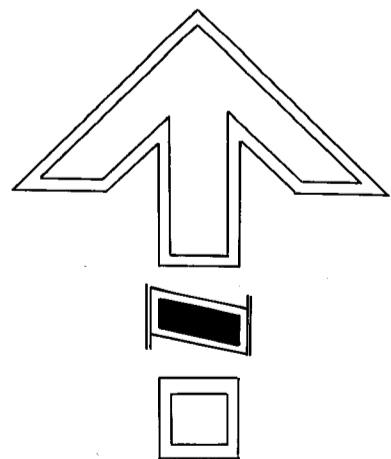
JULY 1986

SHEET 1 OF 4



**LEGEND**

- X LINE TREE
- ACAP ALUMINUM CAPPED MONUMENT ON ALUMINUM PIPE (SEE NOTE)
- M.O.S. MOUND OF STONE
- B.C. BRASS CAP
- FOUND CORNER AS NOTED
- SET MONUMENT AS NOTED
- ③ REFER TO CORNER NOTES
- REPRESENTS POSTED AND BLAZED BOUNDARY
- EXTENDED LINES OF SURVEY
- (R1) RECORD DATA PER GLO SPECIAL INSTRUCTIONS ISSUED JUNE 1, 1926, AND ASSIGNED JUNE 5, 1940. SURVEY COMMENCED JULY 8, 1940, AND COMPLETED JULY 10, 1940, BY ROGER WILSON, CADASTRAL ENGINEER AND HAROLD JOHNSTON, PUBLIC LAND SURVEYOR.
- (R11) RECORD DATA PER GLO SPECIAL INSTRUCTIONS ISSUED APRIL 23, 1927, AND ASSIGNED JUNE 5, 1940. SURVEY COMMENCED SEPT. 9, 1940, AND COMPLETED OCTOBER 11, 1940, BY ROGER WILSON, CADASTRAL ENGINEER.
- (R2) RECORD DATA PER GLO CONTRACT DATED JULY 21, 1880. SURVEY COMMENCED OCTOBER 12, 1880, AND COMPLETED OCTOBER 20, 1880, BY Wm. MINTO.
- (R) RECORD DATA PER GLO CONTRACT DATED JULY 21, 1880. SURVEY COMMENCED OCTOBER 9, 1880, AND COMPLETED OCTOBER 11, 1880, BY Wm. MINTO.
- (R2) RECORD DATA PER GLO CONTRACT DATED JULY 21, 1880. SURVEY COMMENCED OCTOBER 28, 1880, AND COMPLETED NOVEMBER 5, 1880, BY Wm. MINTO.
- (R4) RECORD DATA PER 6 R.S. 25.
- GLO GENERAL LAND OFFICE
- O.R. OFFICIAL RECORDS



SCALE: 1" = 1000'

RANGE 8 EAST RANGE 9 EAST