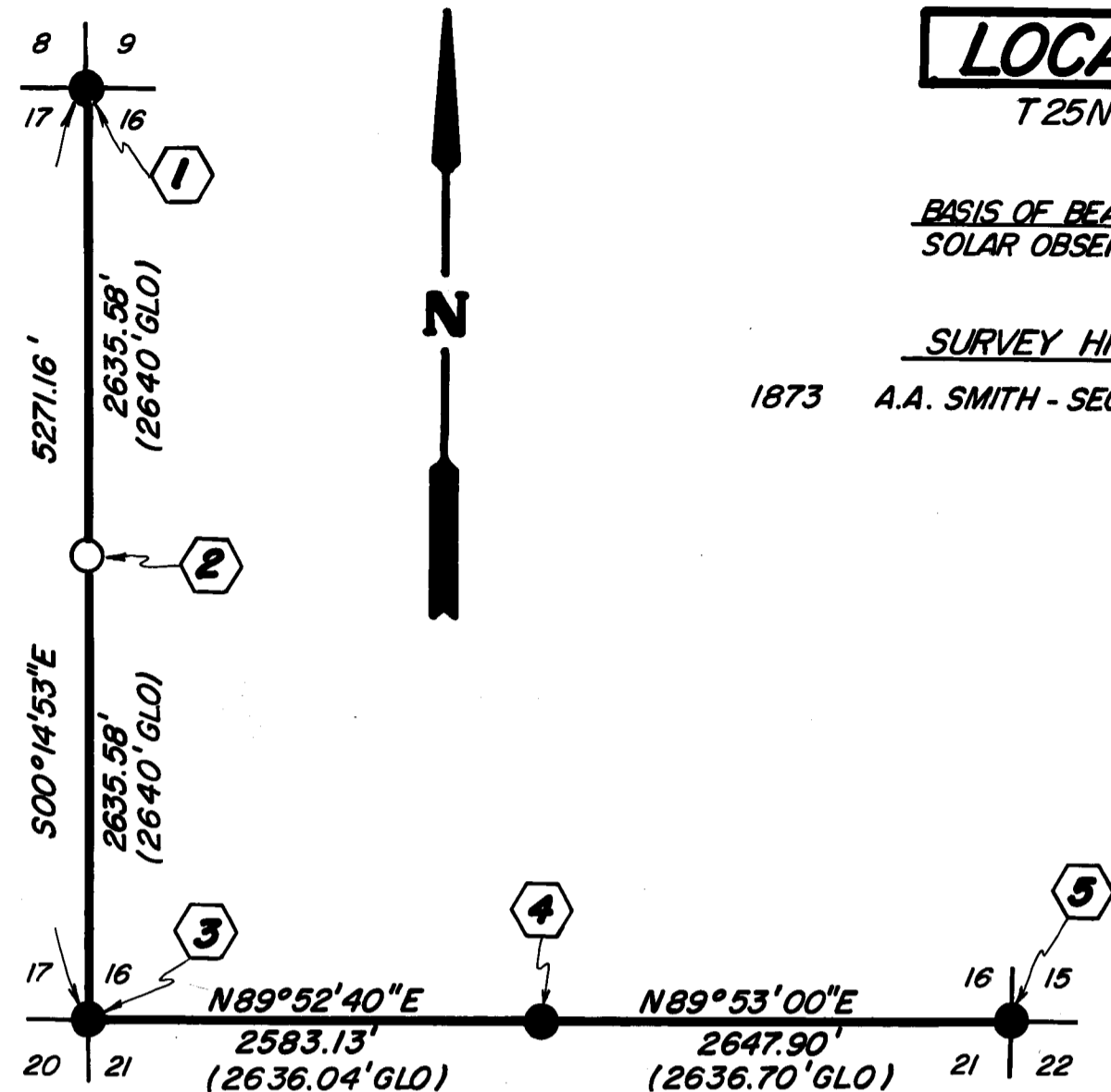


LOCATION C

T25N, R15E

BASIS OF BEARING
SOLAR OBSERVATION

SURVEY HISTORY
1873 A.A. SMITH - SECTION 16



CORNER NOTES

CORNER NO. 1
T25N R15E
S8 | S9
S17 | S16
LS4495
1986
FD. STONE MOUND WITH 12"x10"x8" STONE
SET STD. USFS ALUM. MON. IN M.O.R.
FD. W. FIR BT-N50°E 29.0'-BURNT OUT FACE ON
TOP, BUT BT SCAR IS STILL VISIBLE
A 13" W. FIR BEARS S5°E 45.9'-S.B.T.
A 9" W. FIR BEARS S49°W 36.4'-S.B.T.
A 16" W. FIR BEARS N37°W 88.3'-S.B.T.

CORNER NO. 4
T25N R15E
1/4 S16
S21
LS4495
1986
FD. 12"x12"x10" STONE IN M.O.R.
SET STD. USFS ALUM. MON. IN M.O.R.
FD. 20" W. FIR BT SNAG-S25°W 15.5'-V.S.
A 9" W. FIR BEARS N61°E 13.2'-S.B.T.
A 7" W. FIR BEARS S19°W 41.5'-S.B.T.

CORNER NO. 2
T25N R15E
1/4
S17 | S16
LS4495
1986
SET STD. USFS ALUM. MON.
IN M.O.R.
FALLS IN PLANTATION
A 4" Y. PINE BEARS N35°W 11.1'-S.B.T.
A 4" Y. PINE BEARS N74°E 8.1'-S.B.T.

CORNER NO. 5
T25N R15E
S18 | S15
S21 | S22
LS4495
1986
FD. STONE MOUND
SET STD. USFS ALUM. MON. IN M.O.R.
FD. 20" Y. PINE BT-S53°E 68.4'-V.S.
(16" PINE-S53°E 68.0'-GLO)
FD. TAGGED 33" Y. PINE-S15°W 34.8'
A 10" W. FIR BEARS N55°E 18.5'-S.B.T.
A 11" W. FIR BEARS S83°E 14.7'-S.B.T.
A 9" W. FIR BEARS S53°W 24.1'-S.B.T.
A 5" W. FIR BEARS N64°W 24.8'-S.B.T.

CORNER NO. 3
T25N R15E
S17 | S16
S20 | S21
LS4495
1986
FD. STONE MOUND WITH 16"x13"x10" STONE
SET STD. USFS ALUM. MON. IN M.O.R.
FD. 37" Y. PINE BT-N50°E 66.0'-V.S.
A 11" Y. PINE BEARS N15°W 30.7'-S.B.T.
A 9" Y. PINE BEARS N38°E 39.4'-S.B.T.
A 9" Y. PINE BEARS S80°E 84.1'-S.B.T.
A 10" Y. PINE BEARS S28°W 63.1'-S.B.T.

V.S.=VISIBLE SCRIBING
H.B.=HEALED BLAZE
S.B.T.=SCRIBED AS A BEARING TREE
STD. USFS MON.=3" METAL DISK
STD. BLM MON.=3" METAL DISK

CORNER NOTES

CORNER NO. 1
T24N R13E
S26 | S25
S35 | S36
1963
FD. DEPT. OF WATER RESOURCES MON.,
2" GALV. PIPE WITH 3" BRASS CAP IN M.O.R.
A 11" Y. PINE BEARS S39°W 45.0'-S.B.T.
A 6" JUNIPER BEARS S2°E 16.0'-S.B.T.
A 6" Y. PINE BEARS N21°W 29.6'-S.B.T.
A 22" Y. PINE BEARS N29°E 70.4'-S.B.T.

CORNER NO. 3
T24N R13E R14E
S25 | S30
S36
LS4495
1986
FD. 3/4" PIPE, LS2322 IN M.O.R.
SET STD. USFS ALUM. MON. IN M.O.R.
FD. 23" W. FIR-N27°W 16.6'-V.S.
(8" FIR-N27°W 15.8'-GLO)
FD. 24" Y. PINE-S28°W 6.1'-H.B.
(7" Y. PINE-S27 1/2°W 5.3'-GLO)

CORNER NO. 6
T24N R13E
S35 | S36
S2 | S1
T23N
1963
FD. 3" CAL STATE D.W.R. BRASS CAP
ON 1 1/2" GALV. PIPE IN M.O.R.
FD. 36" Y. PINE-N82°E 45.0'-H.B.
FD. 22" PINE SNAG-S29°E 97.0'-V.S.
(23" PINE-S28°E 96.4'-GLO)
FD. 37" Y. PINE-S54°W 66.1'
(38" PINE-S58 1/2°W 64.7'-GLO)
A 9" W. FIR BEARS S7°E 14.9'-S.B.T.
A 10" Y. PINE BEARS N62°W 37.7'-S.B.T.

CORNER NO. 2
T24N R13E
1/4 S22
S36
LS4495
1986
SET STD. USFS ALUM. MON.
IN M.O.R.
A 6" CEDAR BEARS N31°W 10.2'-S.B.T.
A 8" Y. PINE BEARS S62°E 9.7'-S.B.T.

CORNER NO. 4
T24N R13E
1/4
S35 | S36
LS4495
1986
FD. 3/4" PIPE, LS2322
SET STD. USFS ALUM. MON. ALONGSIDE
IN M.O.R.
FD. 16" Y. PINE TAGGED BY LS2322-N7°E 22.6'-S.B.T.
A 7" CEDAR BEARS S55°W 9.0'-S.B.T.

CORNER NO. 7
T24N R13E
1/4 S36
S1
LS4495
1986
SET STD. USFS ALUM. MON.
IN M.O.R.
A 6" W. FIR BEARS S19°E 11.7'-S.B.T.
A 6" W. FIR BEARS N59°W 15.7'-S.B.T.

CORNER NO. 5
T24N R13E R14E
1/4
S36
LS4495
1986
FD. 3/4" PIPE, LS2322
SET STD. USFS ALUM. MON. ALONGSIDE
IN M.O.R.
FD. 34" S. PINE BT SNAG-N64°W 41.4'-V.S.
(30" Y. PINE-N67°W 40.3'-GLO)
A 8" JUNIPER BEARS N26°W 27.6'-S.B.T.
A 16" Y. PINE BEARS S18°W 25.4'-S.B.T.

CORNER NO. 8
T24N R13E
S36
S1
T24N R14E
S31
T23N
1972
FD. STD. BLM MON.
FD. 29" Y. PINE-N20°W 17.7'-V.S.
FD. 24" Y. PINE-S20°E 65.7'-V.S.
(23" PINE-S23°E 64.7'-GLO)
FD. 9" JUNIPER-S58°W 41.0'-V.S.
(6" JUNIPER-S57°W 40.9'-BLM)
FD. DOWN PINE-S67°W 24.4'-V.S.
(PINE-S67°W 24.4'-BLM)

STD. USFS MON.=3" METAL DISK
V.S.=VISIBLE SCRIBING
H.B.=HEALED BLAZE
S.B.T.=SCRIBED AS A BEARING TREE
STD. BLM MON.=3" METAL DISK

-(-) 1 RS III

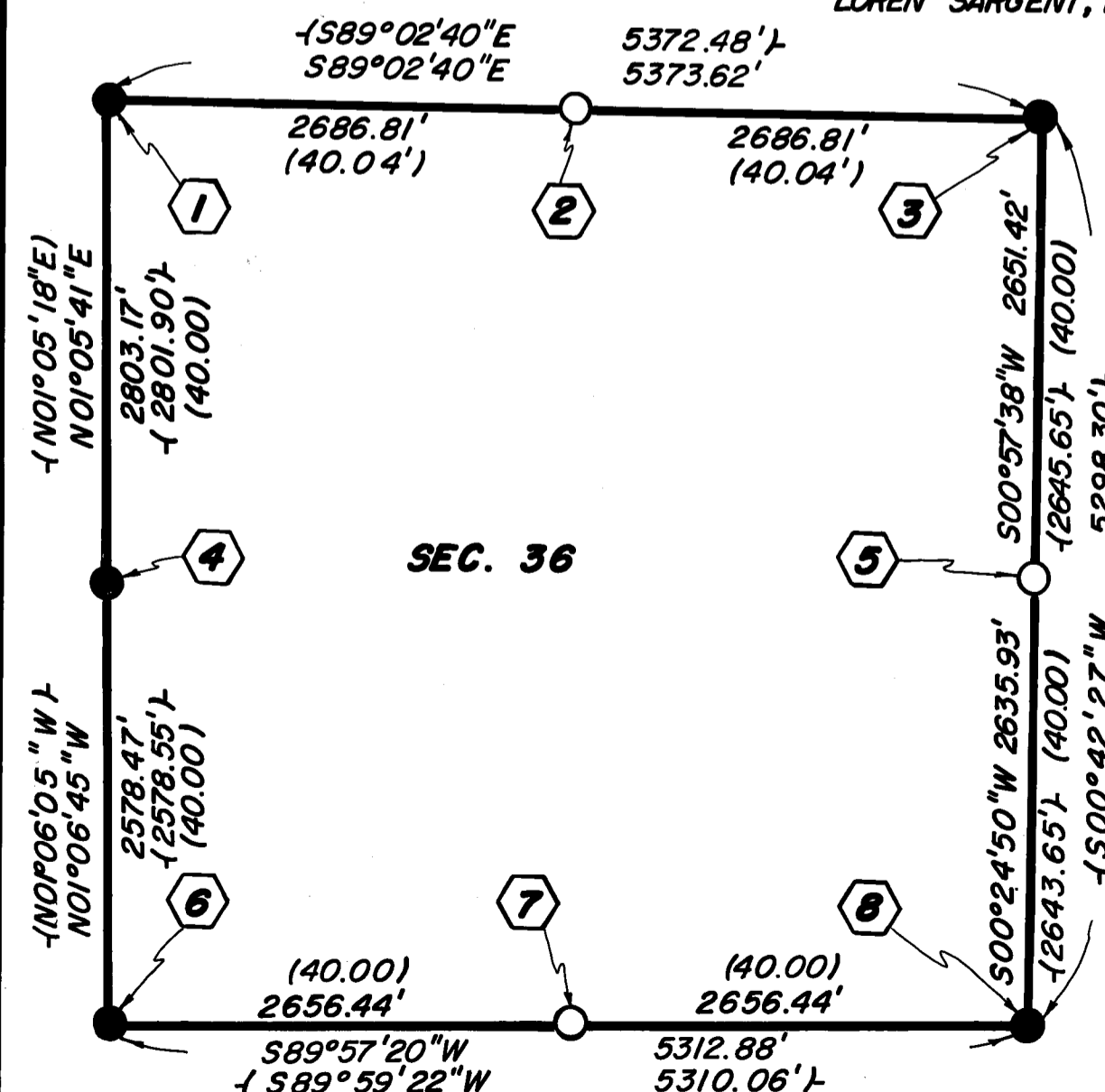
LOCATION B

T24N, R13E

BASIS OF BEARING
NORTH LINE OF SEC. 36 PER 1RS III
FLUMAS COUNTY RECORDS

SURVEY HISTORY

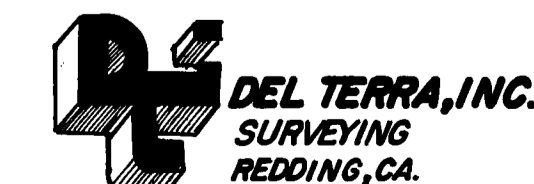
1870 A.W. KEDDIE SURVEYED THE SOUTH BOUNDARY
1875 D.D. BROWN SURVEYED THE NORTHWEST
AND EAST BOUNDARY
1971 SE CORNER RECOVERED BY BLM
1954 EXTERIOR OF 36 SURVEYED BY
LOREN SARGENT, LS 2322 1RS III



RECORD OF SURVEY

FOR
THE USDA FOREST SERVICE

VARIOUS LOCATIONS IN THE UNINCORPORATED TERRITORY
OF FLUMAS COUNTY, STATE OF CALIFORNIA



SCALE 1"=1000'
DATE AUGUST 1986
SHEET 2 OF 5