

V.S. = VISIBLE SCRIBING
 H.B. = HEALED BLAZE
 S.B.T. = SCRIBED AS A BEARING TREE
 STD. USFS MON. = 3" METAL DISK
 STD. BLM MON. = 3" METAL DISK

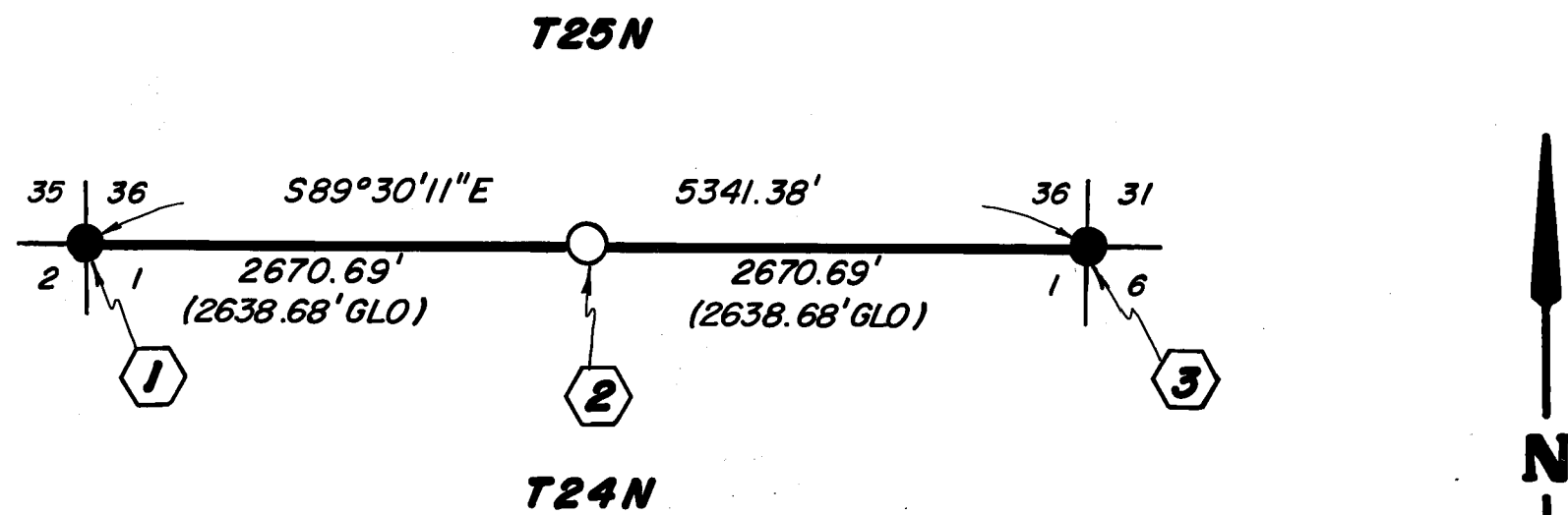
LOCATION D

T 24N, T 25N, R 10E

BASIS OF BEARING
 SOLAR OBSERVATION

SURVEY HISTORY

- 1870 A.W. KIDDIE - W 1/2 SOUTH LINE 36
- 1880 WILLIAM MINTO - SOUTH LINE 36
- 1969 CORNERS 1 AND 3 - REMONUMENTATION



CORNER NOTES

CORNER NO. 1
 T25N R10E S35 S36 S2 S1
 T24N 1971
 FD. STD. USBLM BRASS CAP MON. IN M.O.R. - CORNER FALLS ON WEST SLOPE 100' EAST OF A DRAW AND 400' WEST OF ROAD

- FD. 20" CEDAR - S50°W 79.4' - V.S. (S 47 1/2°W 79.2' - GLO)
- FD. 14" CEDAR - S68°W 18.0' - V.S. (14" CEDAR - S73°W 18.5' - BLM)
- FD. 13" CEDAR - N69°W 14.5' - V.S. (13" CEDAR - N66°W 14.5' - BLM)
- FD. 25" FIR - N22°E 38.1' - V.S. (N 22°E 37.6' - GLO)
- FD. 12" CEDAR - S15°E 20.7' - V.S. (11" CEDAR - S15°E 19.8' - BLM)

CORNER NO. 2
 T25N R10E 1/4 S36 S1
 T24N LS4495 1986
 SET STD. USFS ALUM. MON. IN M.O.R. CORNER FALLS ON A LARGE BOULDER

- A 10" W. FIR BEARS S87°W 30.3' - S.B.T.
- A 12" W. FIR BEARS N3°W 63.7' - S.B.T.

CORNER NO. 3
 T25N R10E S36 S31 S1 S6
 T24N 1969
 FD. STD. BLM BRASS CAP MON. IN M.O.R. SET IN OLD FIR STUMP

- FD. 18" W. FIR BT - N28°E 8.6' - H.B. (20" FIR - N28°E 8.6' - BLM)
- FD. 38" S. PINE BT - S65°E 102.3' - V.S. (40" S. PINE - S70°E 126.0' - BLM)
- FD. 30" W. FIR BT - S34°W 9.2' - H.B. (29" FIR - S26°W 9.2' - BLM)
- FD. 36" S. PINE BT - N29°W 83.8' - H.B. (36" S. PINE - N34°W 88.0' - BLM)
- FD. 25" W. FIR BT - N15°E 21.1' - H.B.
- FD. 26" W. FIR BT - N84°E 48.2' - H.B.

V.S. = VISIBLE SCRIBING
 H.B. = HEALED BLAZE
 S.B.T. = SCRIBED AS A BEARING TREE
 STD. USFS MON. = 3" METAL DISK
 STD. BLM MON. = 3" METAL DISK

CORNER NOTES

CORNER NO. 1
 T25N R9E S8 S9 S17 S16
 1967
 FD. STD. BLM BRASS CAP MON.

- FD. PINE STUMP - N60°E 56.8' (13" PINE - N58 1/2°E 60.7' - GLO)
- FD. 36" FIR - N69°W 39.6' - H.B. (20" FIR - N69°W 39.6' - GLO)
- FD. PINE STUMP - S25°W 39.6' (24" Y. PINE - S26°W 39.6' - GLO)
- FD. 14" Y. PINE - N80°E 38.8' - V.S. (12" Y. PINE - N77 1/2°E 38.6' - BLM)
- FD. 27" FIR - N25°W 62.9' - V.S. (25" FIR - N23 1/2°W 62.7' - BLM)
- FD. 11" OAK - S25°W 52.8' - V.S. (10" OAK - S23°W 52.8' - BLM)
- FD. 10" OAK - S60°E 40.4' - V.S. (10" OAK - S59°E 40.3' - BLM)

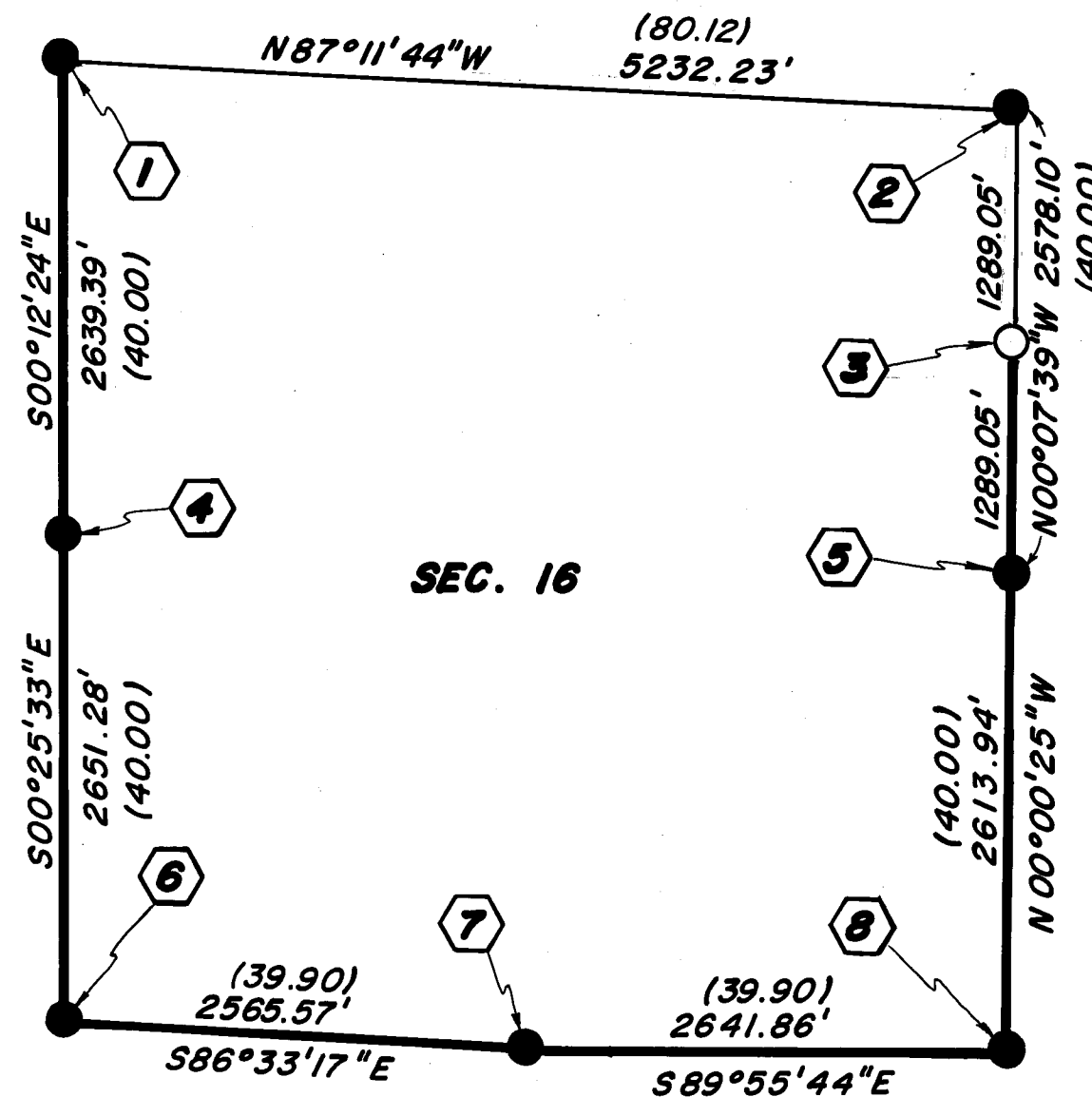
CORNER NO. 2
 BLM RM T25N R9E 50 FT TO COR. S15 1967
 FD. STD. BLM BRASS CAP MON.
 FD. 28" CEDAR - S28°40'E 24.4' - V.S. (10" CEDAR - S28°E 17.2' - GLO)
 FD. 7" LIVE OAK - S73°E 56.4' (6" LIVE OAK - S73°E 56.4' - BLM)
 FD. 9" LIVE OAK - N78°E 70.9' (9" LIVE OAK - N78°E 70.9' - BLM)

LOCATION E

T 25N, R 9E

SURVEY HISTORY

BASIS OF BEARING 1880 WILLIAM MINTO ORIGINAL SURVEY
 SOLAR OBSERVATION 1966 BLM, REMONUMENTATION OF CORNERS



CORNER NO. 3
 N1/16 5' WC S15 S16 LS4495 1986
 SET L.S. 4495 TAG IN ROOT BALL OF OAK TREE FOR CORNER.
 SET STD. USFS ALUM. MON. FOR WITNESS CORNER, 5 FEET NORTHERLY ON SEC. LINE

- A 6" FIR BEARS S68°E 10.1' TO TRUE CORNER - S.B.T.
- A 6" FIR BEARS N80°W 11.1' TO TRUE CORNER - S.B.T.

CORNER NO. 4
 T25N R9E 1/4 S17 S16 1967
 FD. STD. BLM BRASS CAP MON. IN M.O.R.

- FD. 11" CEDAR - N58°W 37.8' - H.B. (10" CEDAR - N61°W 38.6' - BLM)
- FD. 16" DOUG FIR - N18°E 14.5' - H.B. (12" FIR - N18°E 14.5' - BLM)

CORNER NO. 5
 T25N R9E 1/4 S16 S15 1967
 FD. STD. BLM BRASS CAP MON. IN M.O.R.

- FD. 27" DOUG FIR - N60°E 4.7' - H.B. (20" SUGAR PINE - N59 1/2°E 4.6' - GLO)
- FD. 35" DOUG FIR - S80°W 27.1' - H.B. (24" RED FIR - S75 1/4°W 26.4' - GLO)
- FD. 9" DOUG FIR - N20°W 27.8' - H.B. (5" FIR - N10°W 27.7' - BLM)
- FD. 7" B. OAK - S8°E 20.7' - H.B. (7" B. OAK - S10°E 20.8' - BLM)

CORNER NO. 6
 T25N R9E S17 S16 S20 S21 1967
 FD. STD. BLM BRASS CAP MON. IN M.O.R. - COR. FALLS ON SW SLOPE

- FD. 6" B. OAK - N57°E 26.4' - H.B. (5" B. OAK - N55 1/2°E 26.4' - BLM)
- FD. 5" B. OAK - NORTH 5.9' - H.B. (4" B. OAK - NORTH 5.9' - BLM)
- FD. DEAD AND DOWN FIR - N42°W 30.0' - V.S. (16" FIR - N41 3/4°W 31.0' - GLO)
- FD. 28" Y. PINE - S74°W 36.9' - H.B. (20" Y. PINE - S77°W 37.0' - GLO)
- FD. 8" B. OAK - S21°W 44.4' - H.B. (6" B. OAK - S17 1/2°W 43.9' - BLM)
- FD. 6" B. OAK - S60°E 35.9' - H.B. (5" B. OAK - S63°E 35.6' - BLM)

CORNER NO. 7
 T25N R9E 1/4 S16 S21 1967
 FD. STD. USBLM BRASS CAP MON.

- FD. 13" SUGAR PINE - S9°E 19.9' - H.B. (8" SUGAR PINE - S10 1/2°E 19.8' - BLM)
- FD. 20" FIR - N71°E 35.0' - H.B. (16" FIR - N71 1/2°E 34.9' - BLM)
- FD. 34" FIR - N3°E 12.5' - H.B. (20" FIR - N 3/4°E 12.5' - BLM)

CORNER NO. 8
 T25N R9E S16 S15 S21 S22 1967
 FD. STD. USBLM BRASS CAP MON. ON STEEP NORTH SLOPE

- FD. 16" FIR - N56°E 38.2' - H.B. (12" FIR - N60 1/2°E 37.6' - GLO)
- FD. 17" FIR - N83°E 28.9' - H.B. (15" FIR - N83°E 28.7' - BLM)
- FD. 22" FIR - S40°E 19.5' - H.B. (12" FIR - S40°E 22.4' - GLO)
- FD. 14" FIR - S30°E 26.5' - V.S. (13" FIR - S32°E 26.4' - BLM)
- FD. 20" FIR - S54°W 8.7' - V.S. (20" FIR - S35 1/2°W 7.9' - GLO)
- FD. 6" FIR - S76°W 31.7' - H.B. (5" FIR - S78°W 32.0' - BLM)
- FD. 9" FIR - N52°W 29.5' - H.B. (7" FIR - N62°W 29.4' - BLM)

RECORD OF SURVEY

FOR THE USDA FOREST SERVICE

VARIOUS LOCATIONS IN THE UNINCORPORATED TERRITORY OF PLUMAS COUNTY, STATE OF CALIFORNIA



DEL TERRA, INC. SURVEYING REDDING, CA. SCALE 1"=1000' DATE AUGUST 1986 SHEET 3 OF 5