

LOCATION F

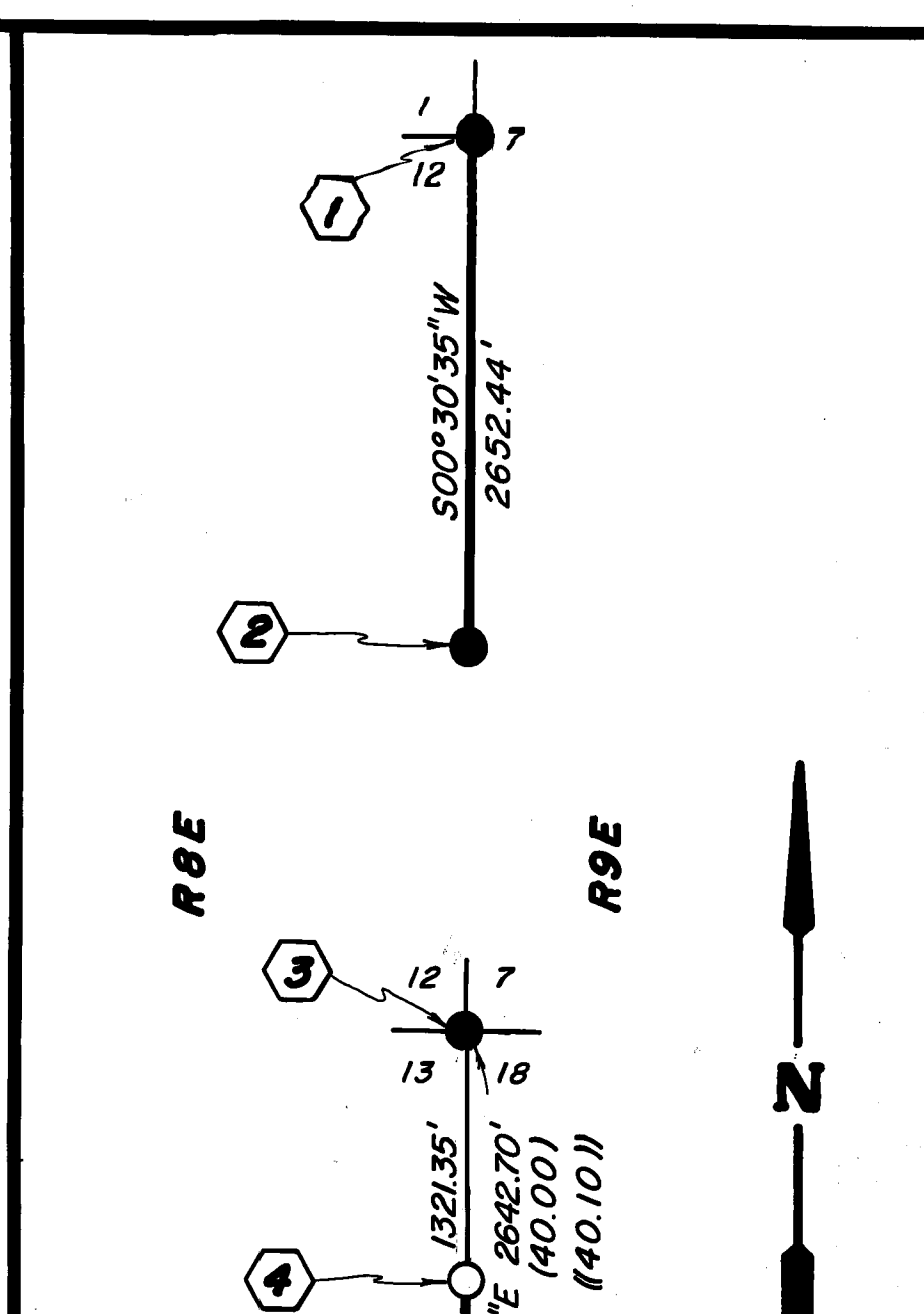
T26N, R8E, R9E
 SURVEY HISTORY
 1869 D.D. BROWN, ORIGINAL
 1940 BLM RESURVEY

CORNER NOTES

T26N R8E R9E **CORNER NO. 1**
 S25 S30 FD. GLO BRASS CAP IN M.O.R.
 S36 S31 FD. 10"x6"x4" STONE IN MOUND
 1940
 FD. 20" SUGAR PINE-S20°E 29.0'-H.B.
 (12" SUGAR PINE-S28°E 30.4'-BLM)
 FD. 21" SUGAR PINE-N75°E 51.1'-H.B.
 (20" SUGAR PINE-N72°E 51.5'-BLM)
 FD. 30" SUGAR PINE-N81°W 24.4'-H.B.
 (12" SUGAR PINE-N80 1/4°W 23.8'-GLO)
 FD. 22" DOUG FIR-S80°W 22.5'-H.B.
 (20" FIR-S78 1/2°W 21.8'-GLO)

1/4 S36 S31 **CORNER NO. 2**
 1940 FD. GLO BRASS CAP ON 3/4" PIPE
 FD. 18" W. FIR-S29°E 14.5'-H.B.
 (12" FIR-S34 1/2°E 15.2'-BLM)
 FD. 34" FIR-S72°W 29.3'-H.B.
 (24" FIR-S68°W 26.4'-GLO)

SC T26N R8E R9E **CORNER NO. 3**
 S36 S31 FD. GLO BRASS CAP, 2 1/2" PIPE
 S6 1940
 FD. 20" SUGAR PINE-N33°W 17.5'-H.B.
 FD. 12" W. FIR-N24°E 24.4'-H.B.
 FD. 60" SUGAR PINE SNAG-S55°E 36.3'-V.S.
 (48" SUGAR PINE-S51 1/2°E 34.3'-GLO)



LOCATION G

T26N, R8E, R9E

BASIS OF BEARING
 SOLAR OBSERVATION

SURVEY HISTORY
 1869 D.D. BROWN - ORIGINAL
 1940 BLM RESURVEY

CORNER NOTES

T26N R8E R9E **CORNER NO. 1**
 S12 S7 FD. BLM BRASS CAP MON.
 S12 S7 1940 FD. 14"x8"x3" STONE
 FD. 34" SUGAR PINE-N72°E 14.4'-V.S.
 (18" SUGAR PINE-N71°E 11.9'-GLO)
 FD. 50" SUGAR PINE-N23°W 39.1'-V.S.
 (24" SUGAR PINE-N21°W 37.6'-GLO)
 FD. 27" W. FIR-S26°W 35.8'-H.B.
 (15" FIR-S24 1/2°W 35.0'-BLM)

1/4 S12 S7 **CORNER NO. 2**
 1940 FD. GLO 3" BRASS CAP MON. IN M.O.R.
 FD. 38" W. FIR BT SNAG-N75°W 111.0'-H.B.
 (18" FIR-N71°W 106.9'-GLO)
 FD. 26" Y. PINE BT-N65°E 88.7'-H.B.
 (12" YELLOW PINE-N66°E 88.4'-BLM)
 FD. 13" LODGEPOLE BT-N50°W 67.8'-H.B.
 (10" LODGEPOLE-N47°W 103 LINKS, 67.9'-BLM)

T26N R8E R9E **CORNER NO. 3**
 S12 S7 FD. GLO 3" BRASS CAP ON 2" PIPE
 S13 S18 IN M.O.R. - CORNER FALLS 20'± NORTH
 1940 OF A MAIN ROAD
 FD. 36" W. FIR BT SNAG-N41°W 24.7'
 (18" FIR-N41°W 23.1'-GLO)
 FD. 38" W. FIR BT-N28°E 117.4'-H.B.
 (18" W. FIR-N28 1/2°E 118.1'-BLM)
 FD. 26" W. FIR BT-S61°W 11.8'-H.B.
 (5" W. FIR-S62°W 11.2'-BLM)

N1/16 S13 S18 **CORNER NO. 4**
 LS4495 SET STD. USFS ALUM. MON.
 1986 IN M.O.R.
 A 10" LODGEPOLE PINE N35°W, 14.3' S.B.T.
 AN 8" LODGEPOLE PINE S55°E, 62.8' S.B.T.

1/4 S13 S18 **CORNER NO. 5**
 1940 FD. GLO 3" BRASS CAP MON. ON
 3/4" PIPE IN M.O.R.
 FD. 20" DOUG FIR BT-S80°E 65.4'-H.B.
 (10" RED FIR-S78 1/4°E 65.3'-BLM)
 FD. 31" SUGAR PINE BT-NORTH 40.2'-H.B.
 (12" SUGAR PINE-N6°W 40.3'-BLM)

T26N R8E R9E **CORNER NO. 6**
 S13 S18 FD. GLO 3" BRASS CAP MON. IN M.O.R.
 S24 S19 1940
 FD. 26" W. FIR BT (ORIG.)-S70°E 23.5'-H.B.
 (26" W. FIR-S70 1/4°E 23.1'-GLO)
 FD. 27" W. FIR BT (ORIG.)-S53°W 6.3'-H.B.
 (24" W. FIR-S53 1/2°W 4.0'-GLO)
 FD. 15" W. FIR BT-N1°W 37.3'-H.B.
 NEW BEARING TREE
 A 8" DOUG FIR BEARS N46°E 25.8'-S.B.T.

1/4 S19 **CORNER NO. 7**
 1940 FD. GLO 3" BRASS CAP ON 3/4" PIPE
 IN M.O.R. - FD. MKD. STONE
 FD. 40" D. FIR BT (DOWN AND ROTTEN)-N41°E 16.5'
 (ORIG. 30" D. FIR-N39 1/4°E 14.5'-GLO)
 FD. 20" W. FIR BT-S70°E 19.0'-H.B.
 (10" W. FIR-S78 1/2°E 18.4'-BLM)

1/4 S24 **CORNER NO. 8**
 1940 FD. GLO 3" BRASS CAP ON 3/4" PIPE
 IN M.O.R.
 FD. 16" W. FIR BT-N20°W 44.0'-H.B.
 (10" W. FIR-N20 3/4°W 43.5'-BLM)
 FD. 22" CEDAR BT-S48°W 94.4'-H.B.
 (18" CEDAR-S47 3/4°W 94.3'-BLM)

((-)) = 1940 GLO RE-SURVEY
 V.S. = VISIBLE SCRIBING
 H.B. = HEALED BLAZE
 S.B.T. = SCRIBED AS A BEARING TREE
 STD. USFS MON. = 3" METAL DISK

RECORD OF SURVEY
 FOR
 THE USDA FOREST SERVICE

VARIOUS LOCATIONS IN THE UNINCORPORATED TERRITORY
 OF PLUMAS COUNTY, STATE OF CALIFORNIA

DEL TERRA, INC. SCALE 1"=1000'
 SURVEYING DATE AUGUST 1986
 REDDING, CA. SHEET 4 OF 5