

LOCATION I

T28N, R11E, R12E

CORNER NOTES

CORNER NO. 1
 T28N R11E S23 S24
 S26 S25 FD. BLM BRASS CAP IN M.O.R. 1968
 FD. 43" W. FIR - N53°W 58.0' - H.B. (20" FIR - N60°W 61.4' - GLO.)
 FD. 45" Y. PINE - N58°E 66.6' - H.B. (30" PINE - N55°E 61.4' - GLO.)
 FD. W. FIR SNAG - S51°E 81.6' - H.B. (28" FIR - S60°E 75.2' - GLO.)
 FD. 16" W. FIR - S45°E 16.5' - H.B. (11" W. FIR - S50°E 16.2' - BLM.)
 FD. 5" W. FIR - S31°W 15.8' - V.S.

CORNER NO. 2
 RM T28N R11E
 6 TO 524 1/4 COR. FD. 39" W. FIR STUMP AS SEC. COR. AND 3" BLM BRASS CAP W.C. 1968
 FD. 44" Y. PINE - N30°W 12.5' - V.S. (40" PINE - N40°W 11.2' - GLO.)
 FD. 15" W. FIR - N9°W 4.8' - H.B. (10" W. FIR - N20°W 4.6' - BLM.)
 FD. 9" W. FIR - S9°E 28.4' - H.B. (6" W. FIR - S15°E 28.4' - BLM.)

CORNER NO. 3
 T28N R11E R12E
 S24 S19 S25 S30 FD. BLM BRASS CAP MON. IN M.O.R. 1969
 FD. 32" W. FIR - S16°E 77.6' - V.S. (30" W. FIR - S16°E 77.9' - BLM.)
 FD. 19" W. FIR - N40°E 33.8' - H.B. (15" W. FIR - N41°E 33.7' - BLM.)
 FD. 34" W. FIR - N20°W 40.6' - H.B. (32" FIR - N20°W 40.3' - BLM.)
 A 8" Y. PINE BEARS S51°W 10.7' - S.B.T.

CORNER NO. 4
 RM 6 FT TO
 1/4 COR. FD. 3" BLM BRASS CAP, W.C. 1968
 FD. 28" Y. PINE FOR CORNER BLM
 FD. 14" W. FIR - S57°E 16.0' (10" FIR - S57°E 15.5' - BLM.)
 FD. 23" W. FIR - N69°W 22.3' (19" FIR - N69°W 22.1' - BLM.)

V.S. = VISIBLE SCRIBING
 H.B. = HEALED BLAZE
 S.B.T. = SCRIBED AS A BEARING TREE
 STD. BLM MON. = 3" METAL DISK
 STD. USFS MON. = 3" METAL DISK

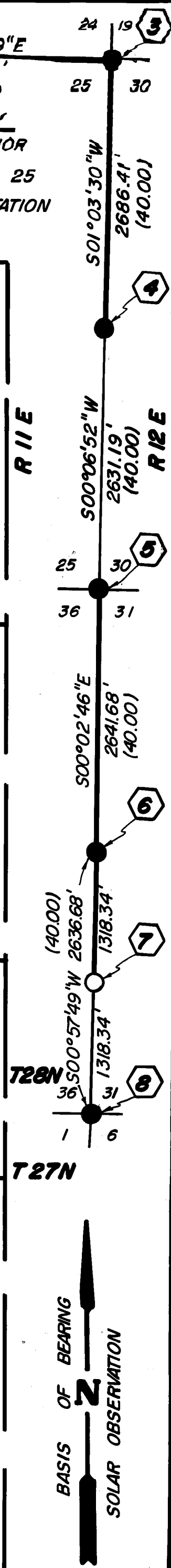
SURVEY HISTORY
 1876 A.A. SMITH, EXTERIOR
 1878 M. SANTEE - N. LINE 25
 1969 BLM REMONUMENTATION

CORNER NO. 5
 T28N R11E R12E
 S25 S30 S36 S31 FD. BLM BRASS CAP MON. 1968
 FD. 28" S. PINE - N61°W 10.1' - H.B. (23" PINE - N61°W 9.9' - BLM.)
 FD. 8" W. FIR SNAG - S22°W 9.2' - V.S. (8" W. FIR - S25°W 9.2' - BLM.)
 FD. 14" W. FIR SNAG - S59°E 34.3' - V.S. (15" W. FIR - S59°E 35.0' - BLM.)
 FD. 22" W. FIR STUMP - N81°E 43.7' - H.B.
 A 9" W. FIR BEARS N84°E 9.3' - S.B.T.
 A 15" CEDAR BEARS S53°E 8.7' - S.B.T.

CORNER NO. 6
 1/4 S36 S31
 R11E R12E FD. BLM BRASS CAP MON. 1968
 FD. 11" FIR - N70°W 14.4' - H.B. (8" FIR - N68 1/2°W 14.5' - BLM.)
 FD. 49" PINE STUMP - WEST 33.0' (44" SPRUCE - WEST 34.3' - GLO.)
 FD. 10" FIR - N60°E 23.4' - H.B. (6" FIR - N63 1/2°E 24.1' - BLM.)
 FD. Y. PINE STUMP - N89°E 45.5' - H.B. (18" Y. PINE - N88°E 46.2' - GLO.)

CORNER NO. 7
 T28N R11E R12E
 S36 S31 SET STD. USFS ALUM. MON. COR FALLS ON SOUTH SLOPE 1986
 LS 4495
 A 9" Y. PINE BEARS S87°E 22.2' - S.B.T.
 A 9" Y. PINE BEARS S49°W 20.5' - S.B.T.

CORNER NO. 8
 T28N R11E R12E
 S36 S31 FD. STD. BLM BRASS CAP MON. 1968
 T27N 1968
 FD. 42" CEDAR - S70°W 52.4' - H.B. (39" CEDAR - S68°W 52.1' - BLM.)
 FD. 19" Y. PINE - N30°E 21.4' - H.B. (15" Y. PINE - N30°E 21.1' - BLM.)
 FD. 10" CEDAR - S55°E 40.9' - H.B. (7" CEDAR - S53 1/2°E 40.9' - BLM.)
 FD. 7" CEDAR - N54°W 16.3' (5" CEDAR - N55 1/2°W 16.5' - BLM.)



CORNER NOTES

CORNER NO. 1
 T27N R7E
 RM S25
 1975 FD. BLM BRASS CAP RM, BEARS N50°E 4.8' TO TREE CORNER - CORNER FALLS ON NE SLOPE, 400' WEST OF A ROAD

FD. 7" W. FIR - N35°W 59.0' - V.S.
 FD. 32" SUGAR PINE - S46°E 31.0' - H.B. (12" PINE - S46°E 31.0' - GLO.)
 FD. 32" W. FIR - S55°W 42.2' - H.B. (14" SPRUCE - S55°W 41.5' - GLO.)
 FD. 8" W. FIR - N68°W 25.1' - H.B.
 FD. 31" Y. PINE SNAG - N49°W 20.5' - V.S. (18" PINE - N45°W 20.5' - GLO.)

CORNER NO. 2
 WW1/64 S25 S36
 LS 4495
 1986 FD. 1" IRON ROD IN ROCK MOUND SET STD. USFS ALUM. MON. IN M.O.R. CORNER FALLS 50' ± EAST OF ROAD, 300' ± SOUTH OF MINING OPERATION AND 40' ± SOUTH OF WASHED OUT DAM

A 9" DOUG FIR BEARS S49°E 47.1' - S.B.T.
 A 14" CEDAR BEARS N12°E 30.6' - S.B.T.

CORNER NO. 3
 CAF T27N
 1/4 S25 S36
 R7E 1957 FD. 2" ALUM CAP MON. IN M.O.R., BLM

FD. DOWN & ROTTED PINE STUMP HOLE - S33°E 33.0' (3" PINE - S33°E 33.0' - GLO.)
 FD. 9" SUGAR PINE - S27°E 17.5' - V.S.
 FD. 23" Y. PINE - NORTH 80.2' - V.S. (15" PINE - NORTH 79.9' - GLO.)

CORNER NO. 4
 T27N R7E R8E
 S25 S36 FD. BLM BRASS CAP MON. IN M.O.R. CORNER ON STEEP SE SLOPE 1975

FD. 21" CEDAR - N48°W 30.8' - V.S.
 FD. 27" CEDAR - N75°W 34.5' - V.S. (16" CEDAR - N75°W 37.6' - GLO.)
 FD. 32" CEDAR SNAG - S6°W 48.7' - V.S. (18" CEDAR - S4°W 47.5' - GLO.)
 FD. 22" CEDAR - N51°E 17.3' - V.S. (9" CEDAR - N48°E 16.5' - GLO.)

CORNER NO. 5
 T27N R7E
 1/4 S35 S36
 1975 FD. STD. USBLM BRASS CAP ON 2 1/2" GALV. IRON PIPE IN SMALL M.O.R. USBLM

FD. 36" SUGAR PINE - N87°E 28.2' - V.S. (6" SUGAR PINE - EAST 27.7' - GLO.)
 FD. 31" Y. PINE - S66°W 44.3' - H.B. (17" Y. PINE - S68°W 42.9' - GLO.)

CORNER NO. 6
 T27N R7E
 S35 S36 S2 S1
 1975 FD. STD. USBLM BRASS CAP MON.

FD. 49" FIR - N57°E 32.1' - V.S. (50" FIR - N56°E 30.4' - BLM.)
 FD. 36" Y. PINE - N47°W 19.7' - H.B. (36" Y. PINE - N49°W 20.5' - BLM.)
 FD. 6" CEDAR - S15°W 22.7' - V.S.
 FD. 36" PINE SNAG - S7°E 39.0'
 FD. 45" W. FIR - S50°E 101.0' (46" FIR - S50°E 101.0' - BLM.)

A 10" SUGAR PINE BEARS S59°E 40.7' - S.B.T.

CORNER NO. 7
 T27N R7E
 1/4 S36 S1
 T26N LS 4495
 1986 SET STD. USFS ALUM. MON. CORNER FALLS ON STEEP NORTH SLOPE 200' ± S.W. OF ROAD, 300' ± EAST OF TOP OF RIDGE

A 11" DOUG FIR BEARS N45°W 93.0' - S.B.T.
 A 12" DOUG FIR BEARS S12°E 14.4' - S.B.T.

CORNER NO. 8
 T27N T26N
 S36 S1
 R7E R8E
 T26N 1975 FD. STD. BLM BRASS CAP ON 2 1/2" GALV. IRON PIPE

FD. 47" PINE SNAG - S18°W 30.6' - H.B. (56" PINE SNAG - S24°W 31.0' - GLO.)
 FD. 16" Y. PINE - S83°W 19.8' - V.S. (16" Y. PINE - S80°W 19.1' - BLM.)
 FD. 19" FIR - N40°W 32.4' - V.S. (4" FIR - N40°W 31.0' - GLO.)
 FD. 28" FIR - N4°W 49.5' - H.B. (30" FIR - N6°W 48.8' - BLM.)
 FD. 42" PINE STUMP - N28°E 75.3' (42" PINE STUMP - N27 1/2°E 72.6' - BLM.)

V.S. = VISIBLE SCRIBING ((~)) 1940 GLO RE-SURVEY
 H.B. = HEALED BLAZE
 S.B.T. = SCRIBED AS A BEARING TREE
 STD. BLM MON. = 3" METAL DISK
 STD. USFS MON. = 3" METAL DISK

RECORD OF SURVEY
 FOR
 THE USDA FOREST SERVICE

VARIOUS LOCATIONS IN THE UNINCORPORATED TERRITORY OF PLUMAS COUNTY, STATE OF CALIFORNIA

DEL TERRA, INC.
 SURVEYING
 REDDING, CA.

SCALE 1"=1000'
 DATE AUGUST 1986
 SHEET 5 OF 5

LOCATION H

T27N, R7E

SURVEY HISTORY

1875 WILLIAM MINTO - ORIGINAL
 1940 BLM RESURVEY OF WEST 1/4
 1974 BLM REMONUMENTATION, NW, NE, SE, SW

