

NOTES

- 1 Bearings shown hereon are based on the California Coordinate System, Zone I. Distances are ground distances. For grid distances multiply by .9998497.
- 2 The R/W line of the UNION PACIFIC R/R was calculated from measured angles between & tangent sections, using the record degree of curve, converted to a simple curve for the total delta. Spirals were disregarded.
- 3 For basis of bearings, see sh 1
- 4 For LEGEND, see sh 1

CERTIFICATES

**SURVEYOR'S STATEMENT**  
 This map (consisting of 2 sheets) correctly represents a survey made by me or under my direction in conformance with the requirements of the Land Surveyors' Act, at the request of 5 DOT LAND & CATTLE CO INC.; MAPES RANCH, INC and the PLUMAS NATIONAL FOREST in July and August, 1986.

*James L. Uptegrove*  
 James L. Uptegrove  
 Calif RCE No 22148  
 745 Maidu Lane  
 Susanville, Calif 96130



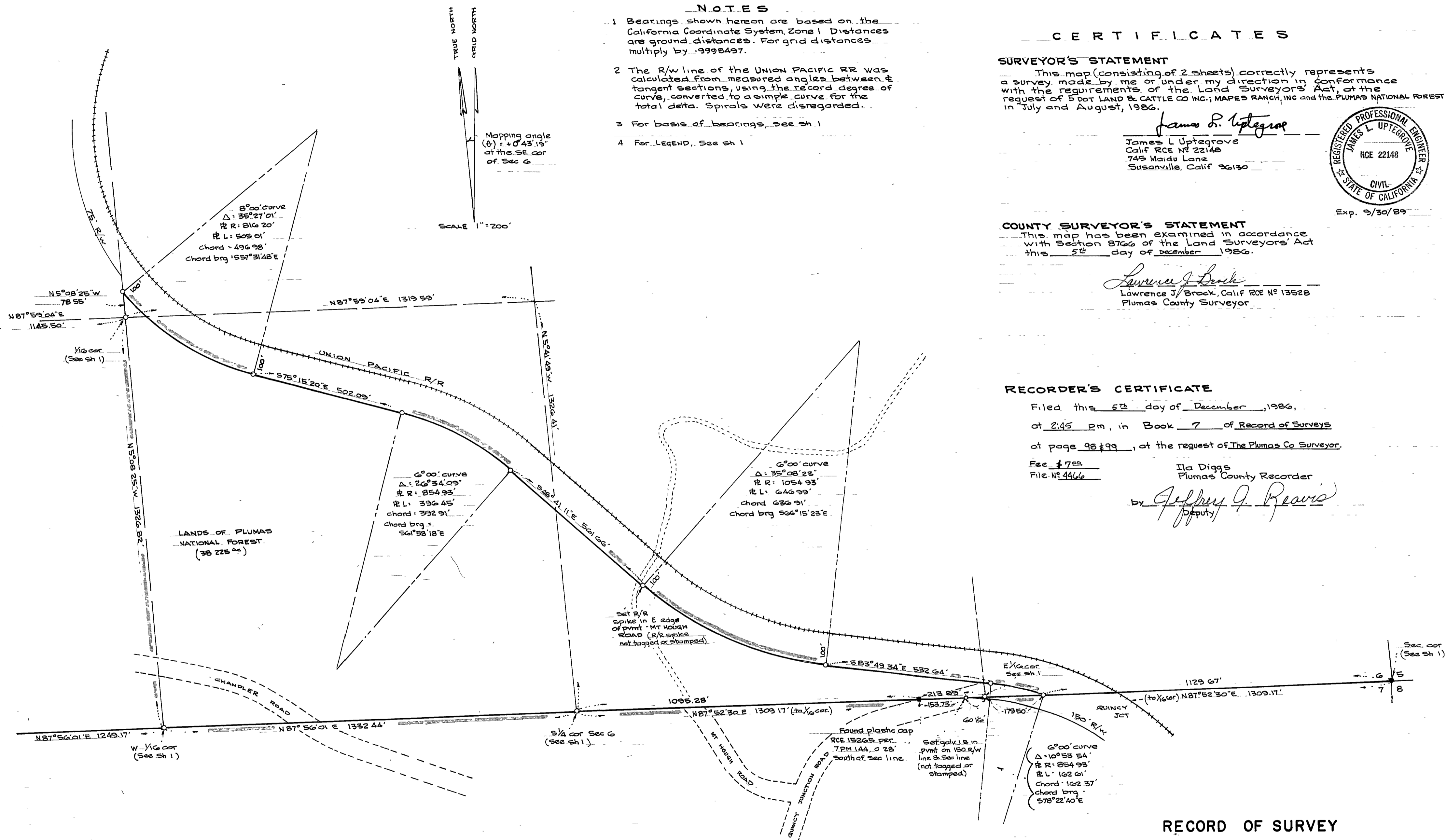
**COUNTY SURVEYOR'S STATEMENT**  
 This map has been examined in accordance with Section 8706 of the Land Surveyors' Act this 5th day of December, 1986.

*Lawrence J. Brook*  
 Lawrence J. Brook, Calif RCE No 13528  
 Plumas County Surveyor

RECORDER'S CERTIFICATE

Filed this 5th day of December, 1986,  
 at 2:45 pm, in Book 7 of Record of Surveys  
 at page 98 & 99, at the request of The Plumas Co Surveyor.  
 Fee \$ 7.00  
 File No 4466

Ila Diggs  
 Plumas County Recorder  
 by *Jeffrey G. Reavis*  
 Deputy



**RECORD OF SURVEY**  
 FOR  
**5 DOT LAND & CATTLE CO. INC.; MAPES RANCH, INC.**  
 AND  
**U.S.D.A. - PLUMAS NATIONAL FOREST**  
 IN  
**SECTIONS 5 & 6, T24N, R10E, M.D.M.**  
 NEAR QUINCY PLUMAS COUNTY CALIFORNIA  
 SCALE: 1" = 200' AUGUST, 1986 SH. 2 OF 2 SH'S