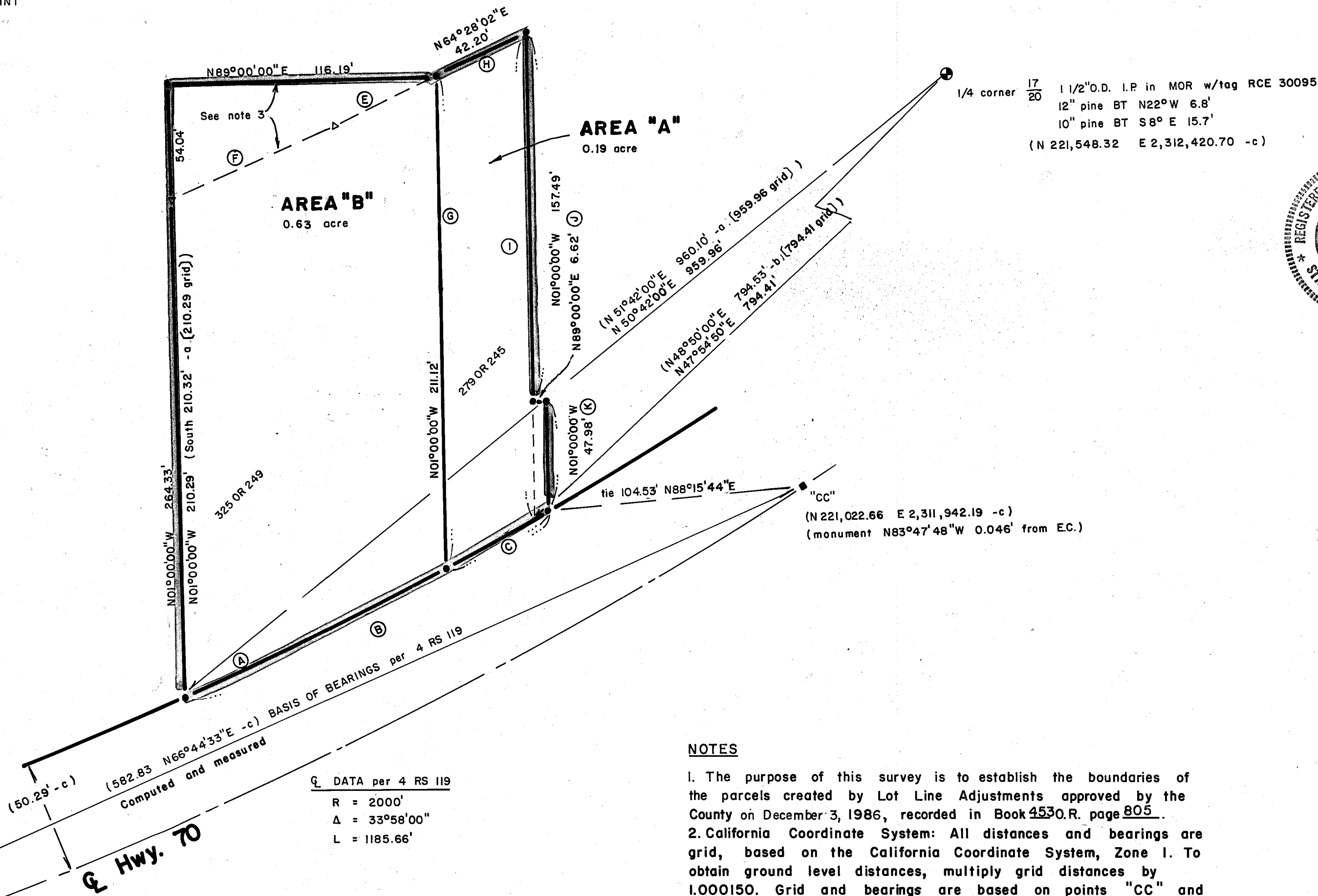


LOCATION MAP
T24N R10E

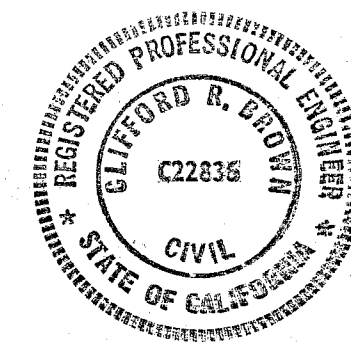
LEGEND

- FOUND STATE HWY. MON per 4 RS 119 (brass cap in monument box)
- FOUND MONUMENT AS NOTED
- SET 1/2" REBAR RCE 22836
- (-a) RECORD PER 325 OR 249 (grid distance shown)
- (-b) RECORD PER 279 OR 245 (grid distance shown)
- (-c) RECORD PER 4 RS 119
- △ CALCULATED POINT



1/4 corner 17/20 1 1/2" O.D. I.P. in MOR w/tag RCE 30095
 12" pine BT N22°W 6.8'
 10" pine BT S8° E 15.7'
 (N 221,548.32 E 2,312,420.70 -c)

"CC"
 (N 221,022.66 E 2,311,942.19 -c)
 (monument N83°47'48"W 0.046' from E.C.)



SURVEYOR'S STATEMENT

This map correctly represents a survey made by me or under my direction in conformance with the requirements of the Land Surveyor's Act at the request of Harold Leigh in August 1985.

Clifford R. Brown
 Clifford R. Brown RCE 22836

COUNTY SURVEYOR'S STATEMENT

This map has been examined in accordance with Section 8766 of the Land Surveyor's Act this 6th day of January, 1987

Lawrence J. Brock
 Lawrence J. Brock RCE 13528
 Plumas County Surveyor

COUNTY RECORDER'S CERTIFICATE

Filed this 12th day of JAN 1987, at 2:41 Pm. in book 7 of Record of Survey, at page 108, at the request of the County Engineer.

Ila Diggs, County Recorder
 Fee 5.00
 File No. 5368
 by *Jeffrey J. Beards*
 Deputy

RECORD OF SURVEY

for
Dr. HAROLD and MARY JO LEIGH

Section 20, T24N, R10E, MDBM, East Quincy, Plumas County, California

Cliff Brown Engineering & Survey
 Rt. 1 Box 480 B
 Quincy, CA. 95971 283-3959

NOTES

1. The purpose of this survey is to establish the boundaries of the parcels created by Lot Line Adjustments approved by the County on December 3, 1986, recorded in Book 4530.R. page 805.
2. California Coordinate System: All distances and bearings are grid, based on the California Coordinate System, Zone 1. To obtain ground level distances, multiply grid distances by 1.000150. Grid and bearings are based on points "CC" and "B" as shown in 4RS119, sheets 7 and 8.
3. A deed from Clarke for this portion of Parcel B is recorded concurrently with the filing of this map in Book 453 OR. page 807.

Record Data

Distance	Bearing	Record	Deed
E 79.00'	S 67°54' W	-a	
F 49.39'	S 60°28' W	-a	
G 210.93'	north	-a	N01°00'00"W 211.12'
H 50.00'	S 60°28' W	-b	
I 209.00'	north	-b	N01°00'00"W 208.97 (grid, calc.)
J 6.62'	east	-b	
K 47.98'	north	-b	

bearings were rotated 1°00'00" CCW to match basis of bearings with 325 OR 249.

DATA per 4 RS 119
 R = 2000'
 Δ = 33°58'00"
 L = 1185.66'

CURVE DATA

CURVE	RADIUS	Δ	LENGTH	CHORD	BEARING
A	1949.71'	3°45'23"	127.81'	127.79'	N 64°23'22"E
B	1949.71'	5°14'40"	178.46'	178.42'	S 63°38'58"W
C	1949.71'	1°29'17"	50.65'	50.65'	S 61°46'17"W

"BB"
 (N 220,792.52 E 2,311,406.73)
 (monument on centerline curve)