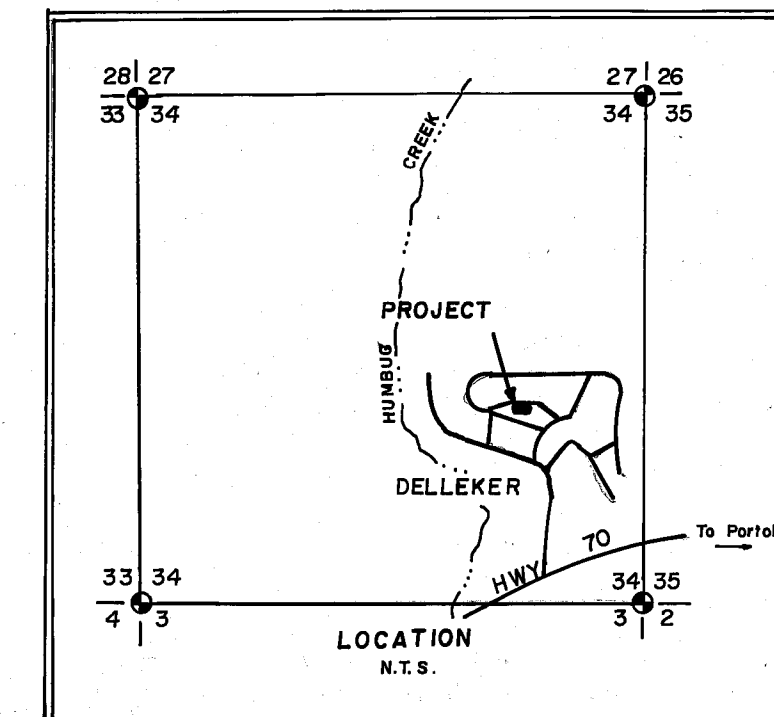


BASIS OF BEARING

THE BASIS OF BEARING IS THE NORTH LINE OF LOTS 117 AND 118 OF DELLEKER SUBDIVISION UNIT 2 SHOWN AS N89°38'22"E PER 3 M 7.

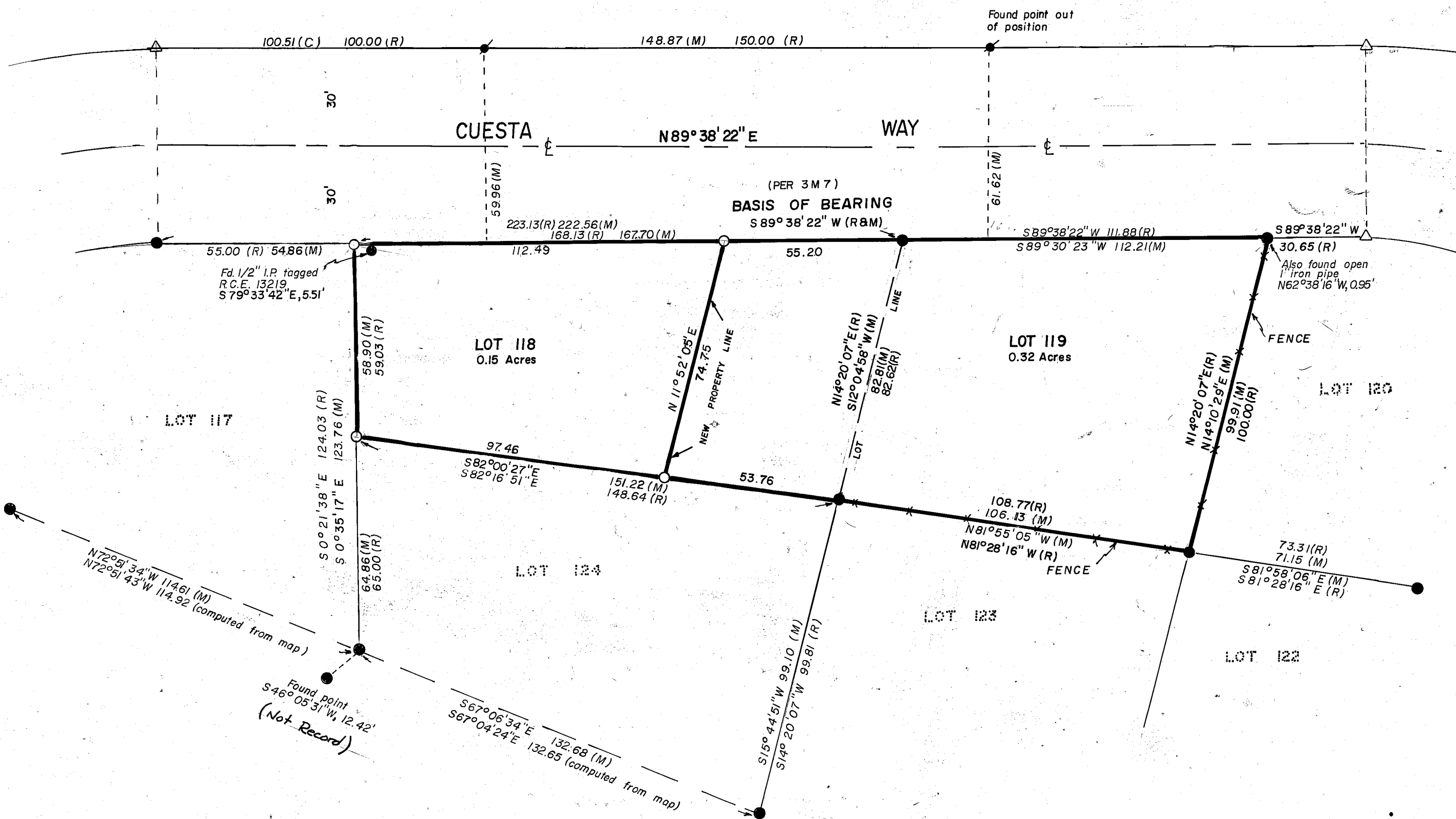


LEGEND

- FOUND 1/2" IRON PIPE TAGGED R.C.E. 13219
- SET 1/2" REBAR TAGGED L.S. 2843
- (M) MEASURED INFORMATION
- (R) RECORD INFORMATION PER 3 M 7
- △ CALCULATED CORNER
- FOUND 1/2" OPEN IRON PIPE
- (C) CALCULATED

NOTES

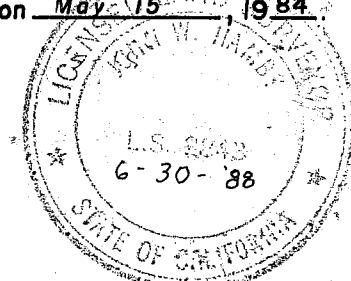
1. The N.W. corner of Lot 118 was apparently knocked out and set in wrong place. The point has been reset at the proportioned distance from the B.C. on the north line of Lot 117.
- The S.W. corner of Lot 118 was set by single proportioning between the reset N.W. corner of Lot 118 and the found S.W. corner of Lot 124.
- The S.W. and S.E. corners of Lot 119 do not fit record information, but appear to be original monuments and were accepted as property corners.



84024

SURVEYOR'S STATEMENT

This map correctly represents a survey made by me or under my direction in conformance with the requirements of the Land Surveyors Act at the request of BRYANT J. HOWARD on May 15, 1984.



John W. Hamby LS 2843

COUNTY SURVEYOR'S STATEMENT

This map has been examined in accordance with Section 8766 of the Land Surveyors Act this 10th day of June, 1987.

Lawrence J. Brock
Lawrence J. Brock RCE 3528
Plumas County Surveyor

RECORDERS STATEMENT

Filed this 11th day of June, 1987, at 10:28 Am. in Book 7 of Record of Surveys at Page 125 at the request of the County Engineer.
Fee \$ 500
File No. 8574

ILA DIGGS, County Recorder

by Jeffrey J. Reavis
Deputy

RECORD OF SURVEY OF

LOTS 118 AND 119 OF DELLEKER SUBDIVISION FOR BRYANT J. AND MARY T. HOWARD BEING A PORTION OF THE SE 1/4 OF SECTION 34, T.23 N., R.13 E., M.D.B. & M. PLUMAS COUNTY CALIFORNIA

AUGUST 1984

HAMBY SURVEYING INC.
LICENSED LAND SURVEYORS

Portola, California
P.O. Box 1209
(916) 832-5571

BRUNING 44-132 40893