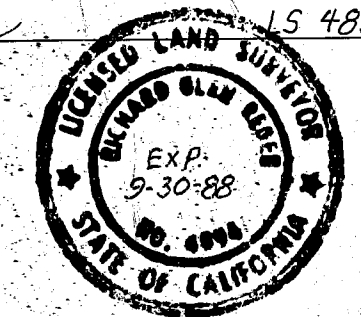


**SURVEYORS STATEMENT**

THIS MAP CORRECTLY REPRESENTS A SURVEY MADE BY ME OR UNDER MY DIRECTION IN CONFORMANCE WITH THE REQUIREMENTS OF THE LAND SURVEYORS ACT AT THE REQUEST OF USDA FOREST SERVICE LASSEN NATIONAL FOREST IN DECEMBER 1986

*Richard J. Rogee* LS 4894



**COUNTY SURVEYORS STATEMENT**

THIS MAP HAS BEEN EXAMINED IN ACCORDANCE WITH SECTION 8766 OF THE LAND SURVEYORS ACT THIS 26<sup>TH</sup> DAY OF June 1987

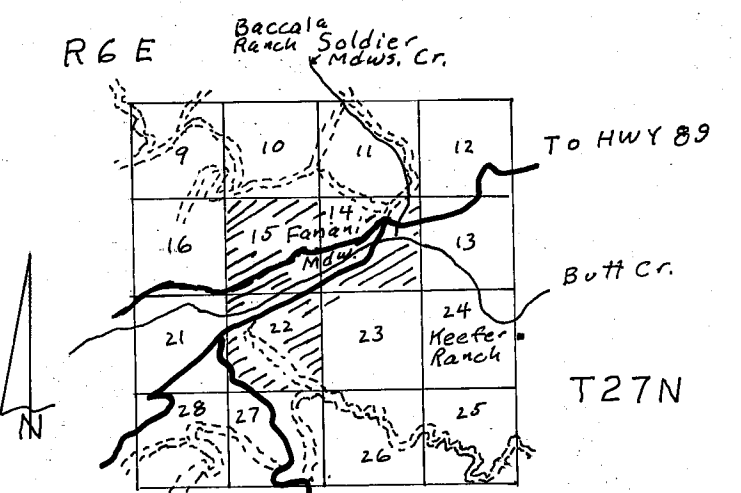
*Lawrence J. Brock*  
PLUMAS COUNTY SURVEYOR  
LAWRENCE J. BROCK RCE 13528

**RECORDERS CERTIFICATE**

FILED THIS 26<sup>TH</sup> DAY OF June 1987  
AT 2:16 PM IN BOOK 2 OF R/S  
AT PAGE 130-132 AT THE REQUEST OF  
THE COUNTY ENGINEER

PLUMAS COUNTY RECORDER-ILA DIGGS  
*Beth Cammack*  
DEPUTY

FEE \$ 9.00  
FILE # 9009

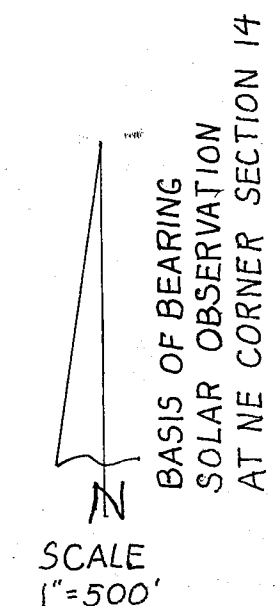


VICINITY MAP  
NO SCALE

**LEGEND**

- = SET USFS ALUM. MON. IN RM LS 4894 1986
- ⊙ = FD. 1" PIPE IN RM LS 2322 PER 2RS 25
- = FD. CAF MON. IN RM SET USFS ALUM. MON. IN RM LS 4894 1986
- = FD. BLM BC MON. IN RM 1970
- ( ) = PER GLO
- [ ] = PER 2 RS 25
- S = SCRIBING
- CAF MON. = 3/4" PIPE W/2 1/2" ALUM. CAP
- RM = ROCK MOUND
- = MARKED AND POSTED PER USFS STANDARDS
- HB = HEALED BLAZE
- ALL BEARING TREE BEARINGS ARE FROM MONUMENT
- USFS ALUM. MON. IS 2 1/2" ALUM. PIPE 30" LONG W/3" ALUM. CAP

NOTE: SET MONUMENTS MARKED PER MANUAL OF INSTRUCTIONS, 1973  
SET TREES ARE BLAZED AND SCRIBED PER MANUAL OF INSTRUCTIONS, 1973



FD:  
30" FIR S32E 77LKS S. GLO (REC S37E 78LKS)  
19" FIR S49E 42LKS HB BLM  
22" CEDAR S7W 77LKS HB BLM  
33" FIR N42E 30' HB 2 RS 25  
22" FIR N78W 255' HB 2 RS 25

SEE SHEET 2

FD:  
FIR STUMP N38E 18LKS GLO  
15" PINE S22W 45LKS HB BLM  
8" FIR N55W 46LKS S. BLM

FD:  
18" FIR SNAG N41E  
26' HB 2 RS 25  
27" FIR S10E  
48' HB 2 RS 25

SET:  
7" FIR S59E 16'  
6" FIR S33W 6'

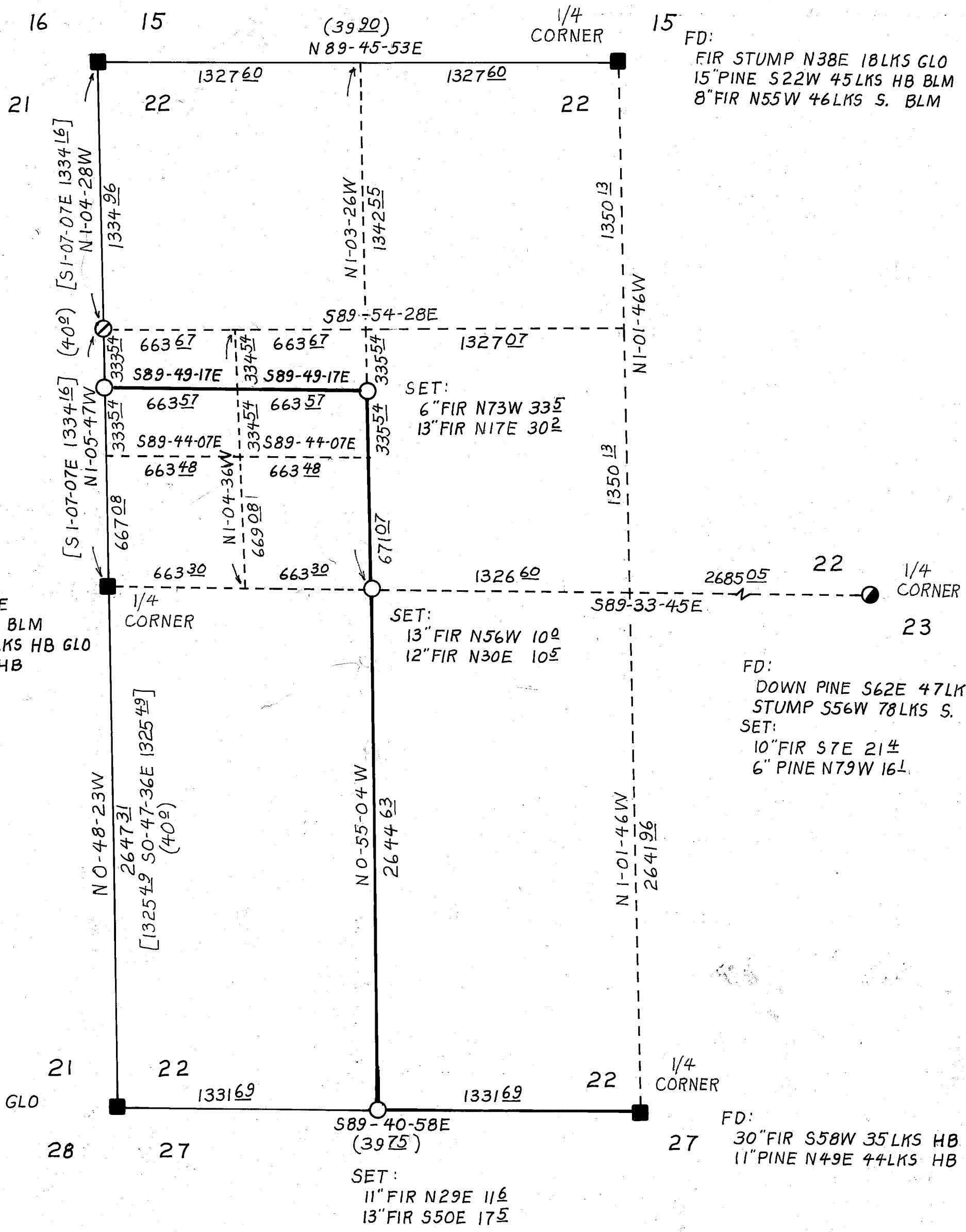
FD:  
CAF MON. 1/2" PIPE  
LS 2322 BESIDE BLM  
32" FIR N39W 57LKS HB GLO  
18" FIR N34E 23' HB  
2 RS 25

FD:  
DOWN PINE S62E 47LKS S. GLO  
STUMP S56W 78LKS S. GLO  
SET:  
10" FIR S7E 21'  
6" PINE N79W 16'

FD:  
ROTTED STUMP  
N22W 97LKS HB GLO  
14" CEDAR N38E  
68LKS HB BLM  
24" PINE N61W  
40' HB 2 RS 25

FD:  
30" FIR S58W 35LKS HB GLO  
11" PINE N49E 44LKS HB BLM

SET:  
11" FIR N29E 11'  
13" FIR S50E 17'



**RECORD OF SURVEY**  
IN SECTIONS 14, 15 & 22, T27N, R6E, MDM  
IN THE UNINCORPORATED TERRITORY OF  
PLUMAS COUNTY, CALIFORNIA  
  
FOR: LASSEN NATIONAL FOREST  
  
BY: NORTH VALLEY SURVEYORS  
REDDING, CALIFORNIA  
  
DECEMBER 1986  
  
SCALE 1"=500'  
SHEET 1 OF 3