

NOTE:
This Record of Survey Map depicts Lot-Line Adjustment approved by Resolution No. 87-2 adopted on Jan. 7, 1987 and recorded in 463 O.R. 404

SURVEYOR'S STATEMENT:

This map correctly represents a survey made by me or under my direction in conformance with the requirements of the Land Surveyor's Act at the request of Susan E. Grant in Feb. 1987.

Fred R. Nagel
Fred R. Nagel, L.S. 3989

COUNTY SURVEYOR'S STATEMENT:

This map has been examined in accordance with Section 8766 of the Land Surveyor's Act this 10th day of July, 1987.

Lawrence J. Brink
Lawrence J. Brink, Plumas Co. Surveyor, R.C.E. 13528

COUNTY RECORDER'S STATEMENT:

Filed this 10th day of July, 1987, at 1:11 P.M. in Book 7 of Record of Surveys at page 133, at the request of the County Engineer.

Fee: \$560 File No. 275
Ila Diggs, Plumas County Recorder

by: Jeffrey J. Rawie
Deputy

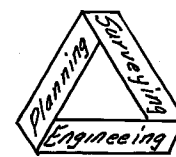
LEGEND

- Found 1" iron pipe tagged "R.C.E. 8596" per R/M 4-61.
- Set 1/2" rebar with cap stamped "L.S. 3989" (except as noted).
- () Indicates record information per R/M 4-61.
- [] Indicates record information per R/M 4-110.
- M Indicates Measured

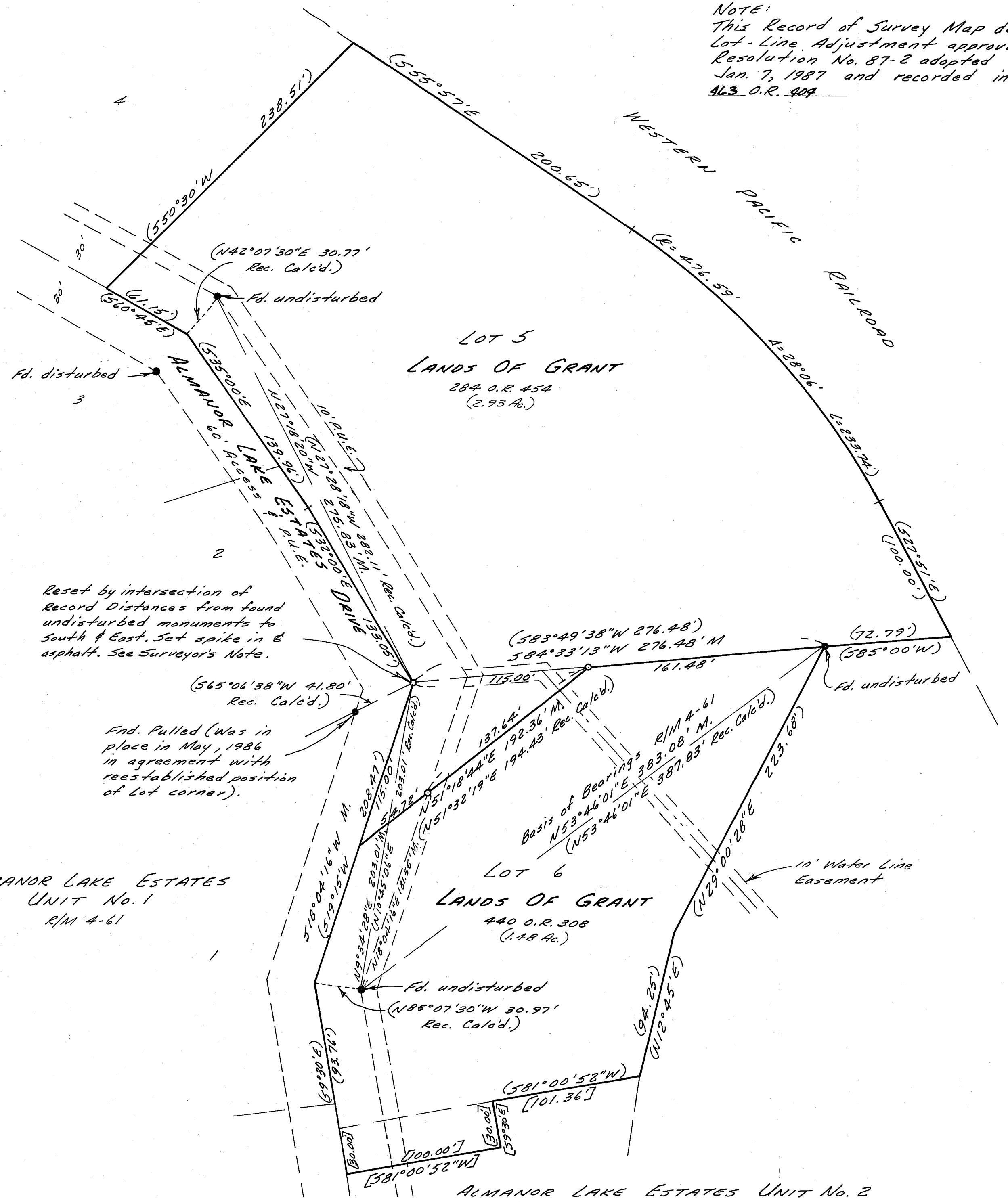
SURVEYOR'S NOTE:
Gross discrepancies exist between monumentation and record map dimensions throughout Almanor Lake Estates Units 1 and 2. The method utilized to reset the northwest corner of Lot 6, intersection of distances from nearest undisturbed corners, appears to fit the road and improvements relatively well.

**RECORD OF SURVEY FOR
JAMES H. & SUSAN E. GRANT**
IN ALMANOR LAKE ESTATES UNIT NO. 1
IN THE N.W. 1/4, SEC. 27, T. 28N., R. 8E., M.D.B. & M.
PLUMAS COUNTY, CALIFORNIA
SCALE: 1" = 50'

NST Engineering Associates, Inc.
45 South Roop Street
Susanville, California
916-257-5173



SCALE: 1" = 50'



ALMANOR LAKE ESTATES
UNIT No. 1
R/M 4-61

LOT 6
LANDS OF GRANT
440 O.R. 308
(1.48 Ac.)

ALMANOR LAKE ESTATES UNIT No. 2
R/M 4-110