

NOTES:

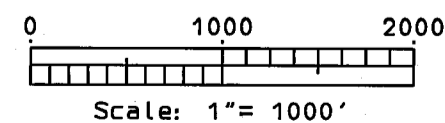
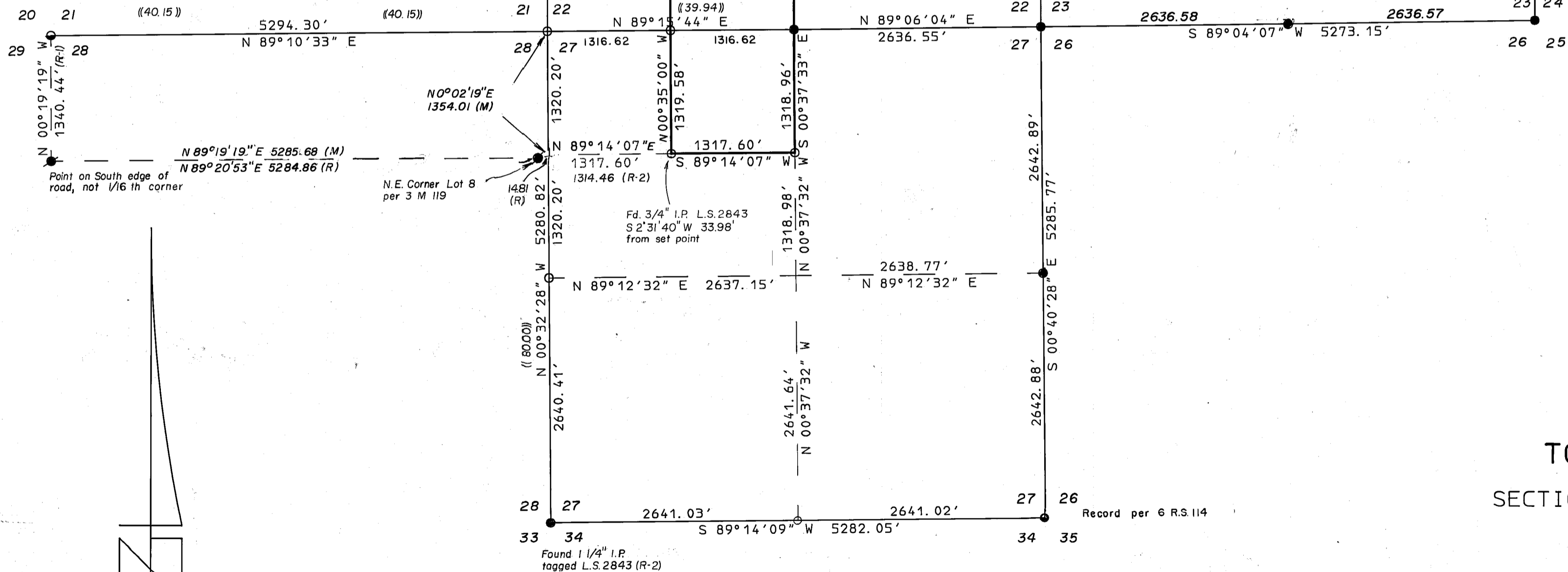
The basis of bearings for this map is the East line of the Southeast 1/4 of Section 23, shown as S 00° 07' 10" W, on 7 RS 36.

Six foot, red, fiberglass posts were set by all corners as accessories.

LEGEND:

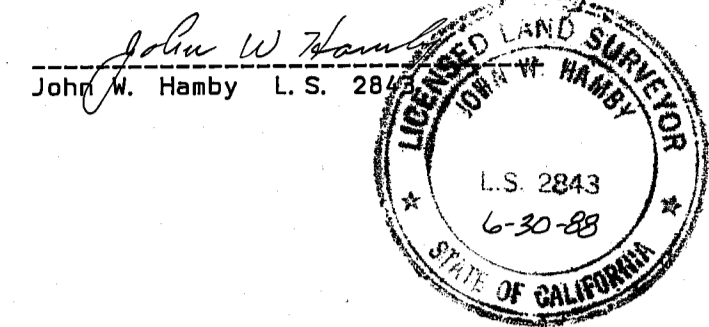
- Fd. 5/8" rebar and cap, L.S. 2843 per 7 R.S. 136 or as noted.
- Fd. 3/4" I.P. tagged L.S. 2843
- ⊕ Set 5/8" rebar and cap, L.S. 2843
- Record point as noted
- (M) Measured
- (R) Record per 3M 119
- (40) G.L.O. records
- (R-1) Record per 4 R.S. 27.
- (R-2) Record per 2 R.S. 88

Record per 4 R.S. 27



SURVEYORS STATEMENT:

This map correctly represents a survey made by me or under my direction in conformance with the requirements of the Land Surveyors Act at the request of TONY CAVALLI in Oct. 1986.



COUNTY SURVEYOR'S STATEMENT

This map has been examined in accordance with Section 8766 of the Land Surveyors Act this 10th day of July 1987.

Lawrence J. Brock
Lawrence J. Brock R.C.E. 13528
Plumas County Surveyor

RECORDER'S STATEMENT

Filed this 13th day of July, 1987, at 1:10 P.M. in Book 7 of Record of Surveys at Page 134 at the request of the County Engineer.

Fee \$ 500
File No. 274

Ila Diggs
Plumas County Recorder
by *Jeffrey J. Baird*
Deputy

RECORD OF SURVEY

FOR

TONY CAVALLI and NORMA CAVALLI

SECTIONS 23, 22, & 27, T 23N R 15 E, M. D. B. & M.
PLUMAS COUNTY CALIFORNIA
SCALE 1"=1000'
JAN. 1987

by Hamby Surveying Inc.
P.O. Box 1209
Portola, Calif. 96122
916-832-5571