

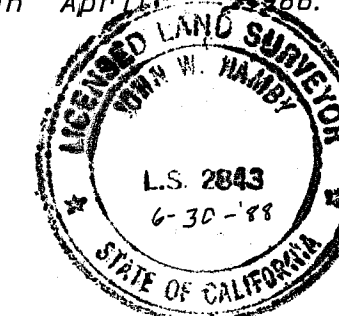
BASIS OF BEARINGS

The basis of bearings for this map is the East line of the S.E. 1/4 of Section 23, shown as N 00° 07' 10" E on 7 R. S. 36.

Set red fiberglass posts by all monuments as accessories.

SURVEYORS STATEMENT:

This map correctly represents a survey made by me or under my direction in conformance with the requirements of the Land Surveyors Act at the request of BYRD HARRISON in April, 1986.



John W. Hamby
John W. Hamby L.S. 2843

LEGEND

- indicates found 1/2" rebar capped L.S. 2843 or as described.
- indicates set 1/2" rebar capped L.S. 2843
- (M) Measured information
- (R) Record per 7 R. S. 36
- (R1) Record per 6 R. S. 114
- (R2) Record per 7 R. S. 53

COUNTY SURVEYOR'S STATEMENT

This map has been examined in accordance with Section 8766 of the Land Surveyors Act this 7th day of August 1987.

Lawrence J. Brock
Lawrence J. Brock R.C.E. 13528
Plumas County Surveyor

RECORDER'S CERTIFICATE:

Filed this 7th day of August, 1987, at 2:20 P.M. in Book 7 of Record of Surveys at Page 135 at the request of the County Engineer.

Fee \$ 5⁰⁰
File No. 101

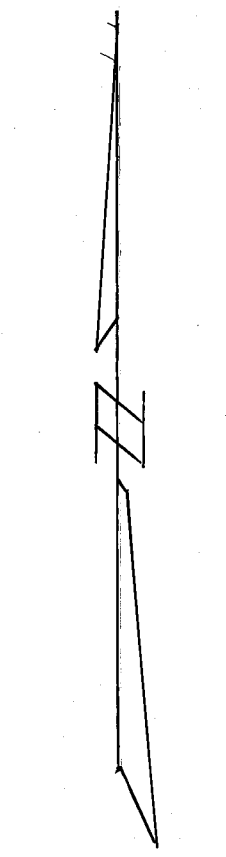
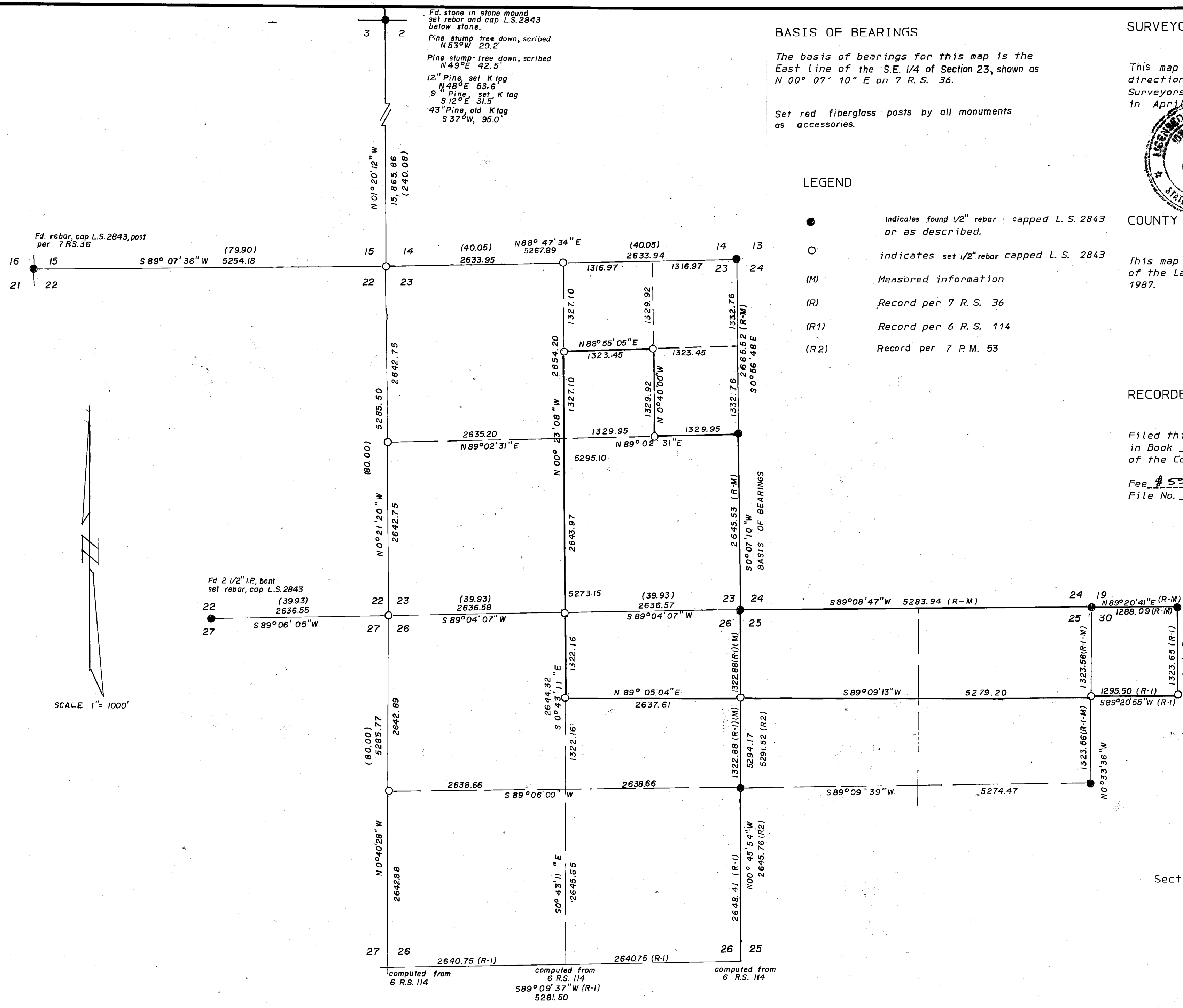
Ila Diggs
Plumas County Recorder
by *Jeffrey A. Davis*
Deputy

RECORD OF SURVEY

FOR
BYRD HARRISON

Sections 23, 25, and 26, T 23 N R 15 E, M. D. B. & M.
and NW 1/4 of NW 1/4 of Sec. 30, T23NR16E
PLUMAS COUNTY CALIFORNIA
Scale 1" = 1000' Dec. 1986

by HAMBY SURVEYING Inc.
P. O. Box 1209
Portola, Calif. 96122
916 832 5571



SCALE 1" = 1000'

computed from 6 R.S. 114
computed from 6 R.S. 114
589° 09' 37" W (R-1) 5281.50
computed from 6 R.S. 114