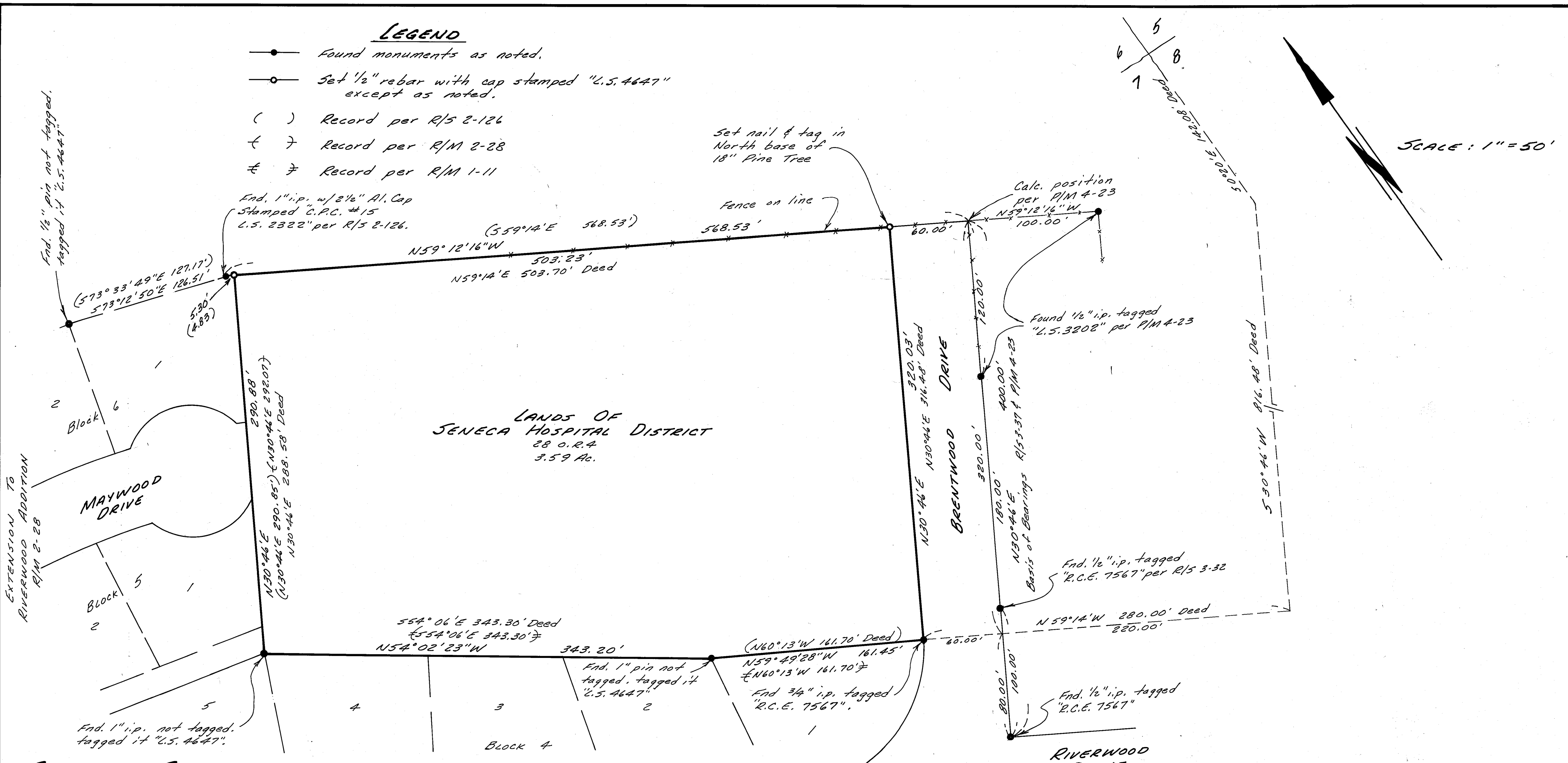


LEGEND

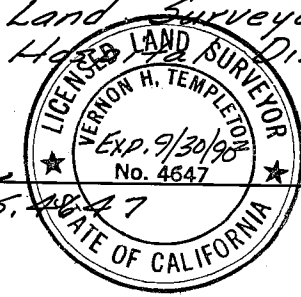
- Found monuments as noted.
- Set 1/2" rebar with cap stamped "L.S. 4647" except as noted.
- () Record per R/S 2-126
- ⊕ ⊗ Record per R/M 2-28
- ⊕ ⊗ Record per R/M 1-11



LANDS OF
SENECA HOSPITAL DISTRICT
28 0.24
3.59 Ac.

SURVEYOR'S STATEMENT:
This map correctly represents a survey made by me or under my direction in conformance with the requirements of the Land Surveyor's Act at the request of Seneca Hospital District in May, 1987

Vernon H. Templeton
Vernon H. Templeton, L.S. #4647



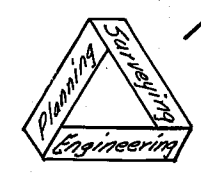
COUNTY SURVEYOR'S STATEMENT:
This map has been examined in accordance with Section 8766 of the Land Surveyor's Act this 7th day of August, 1987.

Lawrence J. Brock
Lawrence J. Brock, Plumas Co. Surveyor, R.C.E. 13528

COUNTY RECORDER'S STATEMENT:
Filed this 7th day of August, 1987, at 2:21 PM, in Book 7 of Record of Surveys at page 136, at the request of the County Engineer. Fee: \$5.00 File No. 1012
Ila Diggs, Plumas County Recorder

by: Gregory J. Reavis
Deputy

**RECORD OF SURVEY FOR
SENECA HOSPITAL DISTRICT**
IN THE N.E. 1/4, N.E. 1/4, SEC. 7, T. 28N., R. 7E., M.D.B. & M.
PLUMAS COUNTY, CALIFORNIA
SCALE: 1" = 50'



NST Engineering Associates, Inc.
45 South Roop Street
Susanville, California
916-257-5173