

**SURVEYOR'S STATEMENT**

THIS MAP CORRECTLY REPRESENTS A SURVEY MADE BY ME OR UNDER MY DIRECTION IN CONFORMANCE WITH THE REQUIREMENTS OF THE LAND SURVEYORS ACT AT THE REQUEST OF RICHARD L. JOY TRUSTEE IN APRIL 1986.

*John W. Hamby*  
JOHN W. HAMBY L.S. 2843

**COUNTY SURVEYOR'S STATEMENT**

THIS MAP HAS BEEN EXAMINED IN ACCORDANCE WITH SECTION 8766 OF THE LAND SURVEYOR'S ACT THIS 18<sup>th</sup> DAY OF August 1987.

*Lawrence J. Brock*  
LAWRENCE J. BROCK R.C.E. 13528  
PLUMAS COUNTY SURVEYOR

**RECORDER'S STATEMENT**

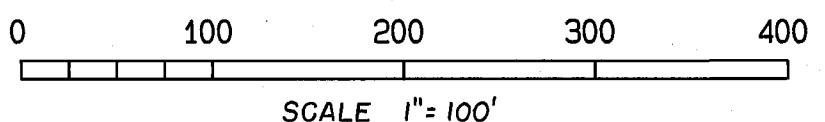
FILED THIS 18<sup>th</sup> DAY OF August, 1987, AT 2:56 PM, IN BOOK 7 OF RECORD OF SURVEYS AT PAGE 139, AT THE REQUEST OF THE COUNTY ENGINEER.

FEE: \$ 522  
FILE No. 1382  
ILA DIGGS, PLUMAS COUNTY RECORDER  
*Jeffrey J. Beavis*  
DEPUTY

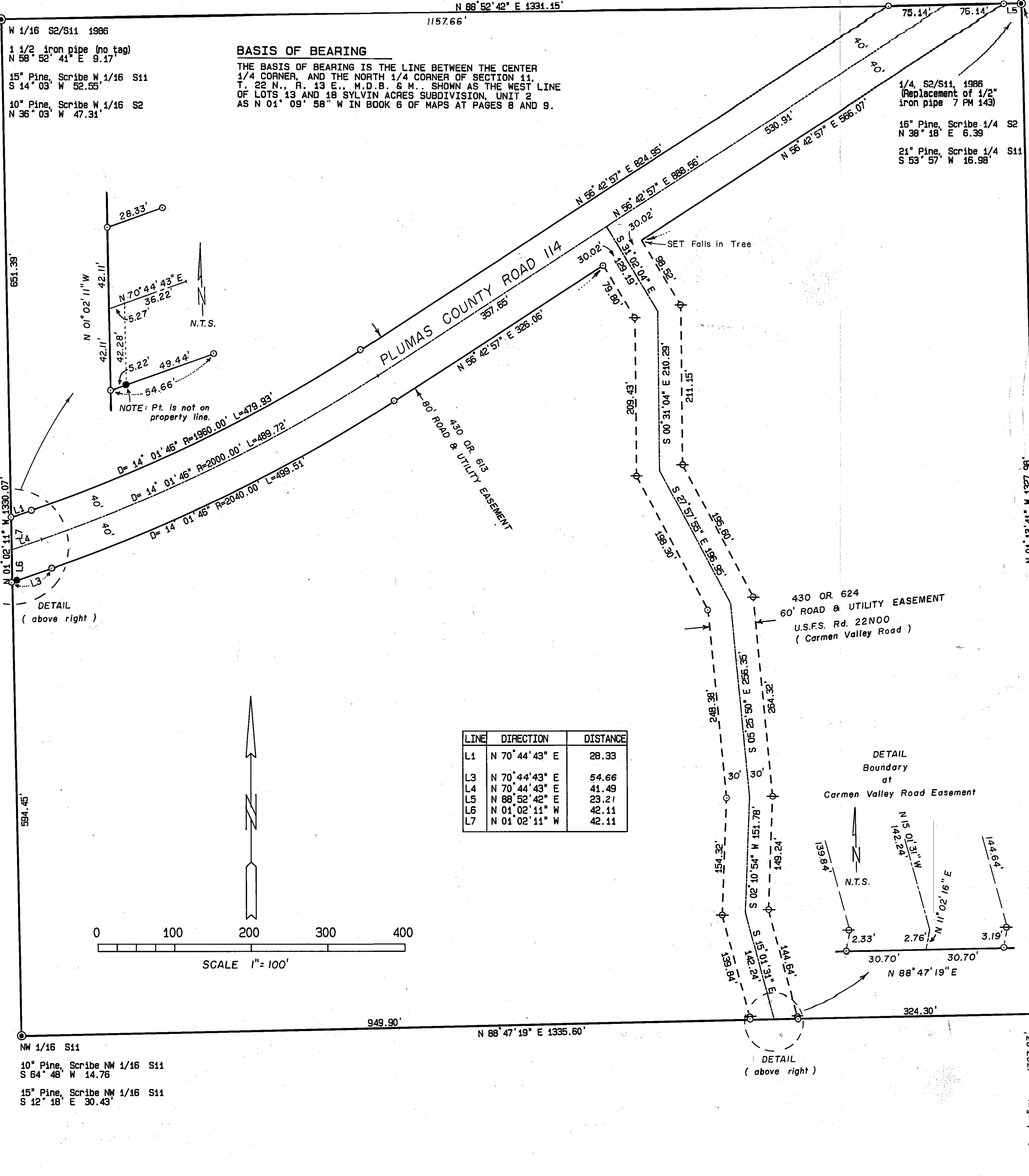
**LEGEND**

- ROAD EASEMENT
- ⊙ FOUND 3 1/4" B.L.M. BRASS DISC marked as described
- ⊕ SET 5/8" REBAR with PLASTIC CAP L.S. 2843
- ⊙ SET 5/8" REBAR with ALUM. CAP L.S. 2843
- FOUND 3/4" I.P. R.C.E. 7294 - NE COR. PARCEL 4 (per 1 PM 23)

LINE	DIRECTION	DISTANCE
L1	N 70° 44' 43" E	28.33
L3	N 70° 44' 43" E	54.66
L4	N 70° 44' 43" E	41.49
L5	N 88° 52' 42" E	23.21
L6	N 01° 02' 11" W	42.11
L7	N 01° 02' 11" W	42.11



**BASIS OF BEARING**  
THE BASIS OF BEARING IS THE LINE BETWEEN THE CENTER 1/4 CORNER, AND THE NORTH 1/4 CORNER OF SECTION 11, T. 22 N., R. 13 E., M.D.B. & M., SHOWN AS THE WEST LINE OF LOTS 13 AND 18 SYLVIN ACRES SUBDIVISION, UNIT 2 AS N 01° 09' 58" W IN BOOK 6 OF MAPS AT PAGES 8 AND 9.



**RECORD OF SURVEY**  
FOR  
RICHARD L. JOY TRUSTEE  
The NE 1/4 of the NW 1/4 of Section 11  
T. 22 N., R. 13 E., M.D.B. & M.  
Plumas County - California  
Scale 1 in. = 100 ft. June, 1987

HAMBY SURVEYING INC.  
P.O. BOX 1209 ph. (916) 832-5571  
PORTOLA, CALIFORNIA 96122