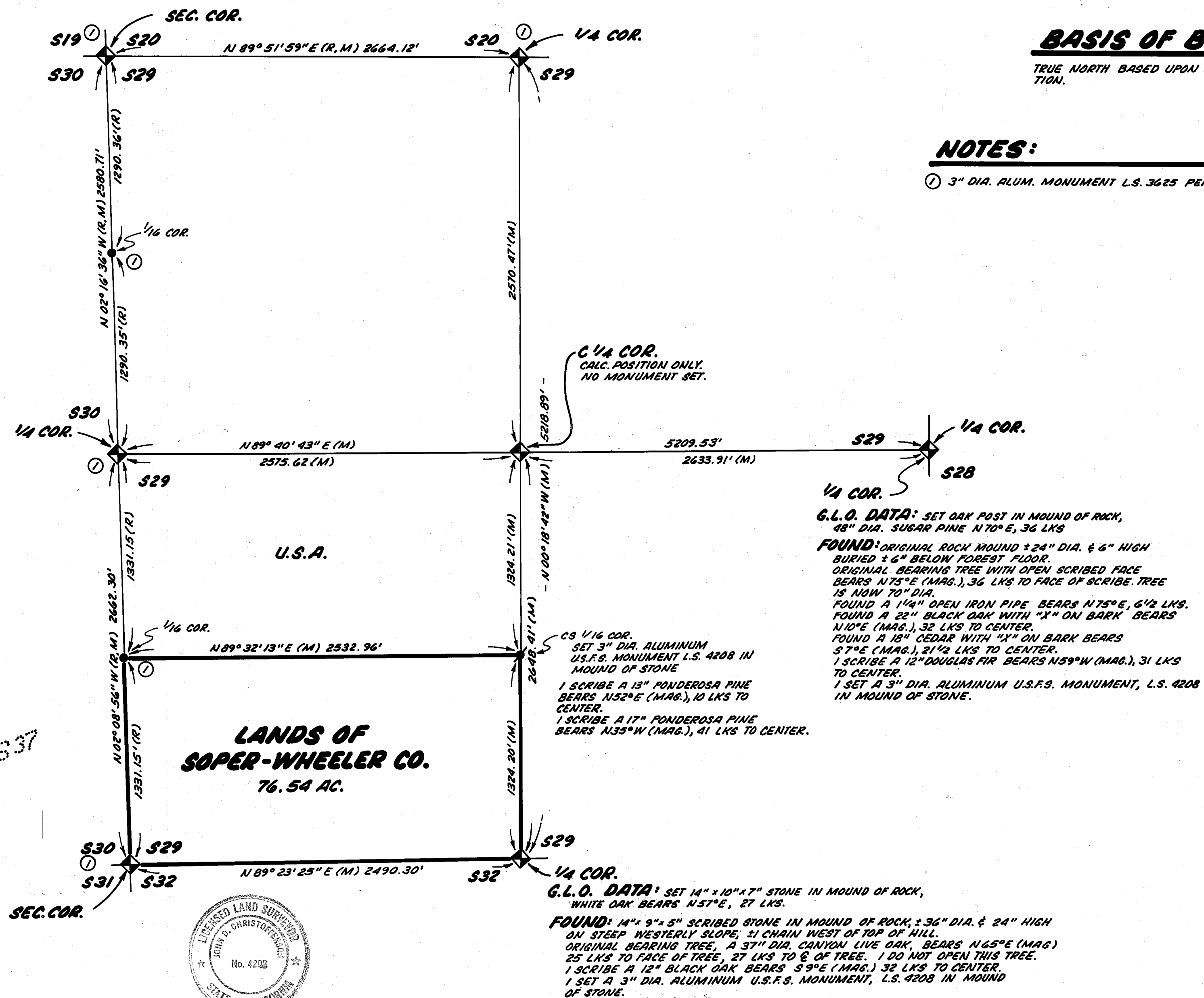


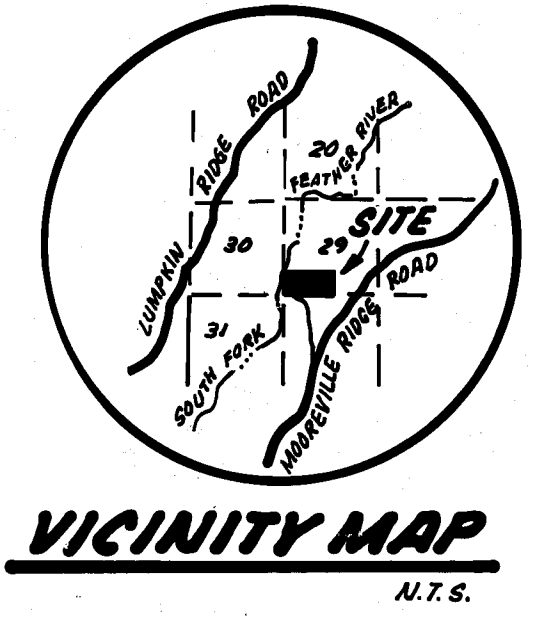
89810



BASIS OF BEARING
TRUE NORTH BASED UPON SOLAR OBSERVATION.



NOTES:
① 3" DIA. ALUM. MONUMENT L.S. 3625 PER (R)



LEGEND

- ◆ - SECTION OR QUARTER SECTION CORNER AS NOTED
- - 3" DIA. U.S.F.S. MONUMENT PER (R)
- ⊕ - SET 3" DIA. U.S.F.S. ALUM. MONUMENT L.S. 4208
- (M) - MEASURED
- (R) - DATA PER BOOK 5 R.S. PG.'S 37-39
- (G.L.O.) - GENERAL LAND OFFICE DATA. SURVEY BY D.C. HALL, 1884.

G.L.O. DATA: SET OAK POST IN MOUND OF ROCK, 48" DIA. SUGAR PINE N70°E, 36 LKS
FOUND: ORIGINAL ROCK MOUND ± 24" DIA. & 6" HIGH BURIED ± 6" BELOW FOREST FLOOR. ORIGINAL BEARING TREE WITH OPEN SCRIBED FACE BEARS N75°E (MAG.), 36 LKS TO FACE OF SCRIBE. TREE IS NOW 70" DIA.
FOUND A 1 1/4" OPEN IRON PIPE BEARS N75°E, 6 1/2 LKS.
FOUND A 22" BLACK OAK WITH "X" ON BARK BEARS N10°E (MAG.), 32 LKS TO CENTER.
FOUND A 18" CEDAR WITH "X" ON BARK BEARS S7°E (MAG.), 21 1/2 LKS TO CENTER.
1 SCRIBE A 12" DOUGLAS FIR BEARS N59°W (MAG.), 31 LKS TO CENTER.
1 SET A 3" DIA. ALUMINUM U.S.F.S. MONUMENT, L.S. 4208 IN MOUND OF STONE.

G.L.O. DATA: SET 14" x 10" x 7" STONE IN MOUND OF ROCK, WHITE OAK BEARS N57°E, 27 LKS.
FOUND: 14" x 9" x 5" SCRIBED STONE IN MOUND OF ROCK, ± 36" DIA. & 24" HIGH ON STEEP WESTERLY SLOPE, ± 1 CHAIN WEST OF TOP OF HILL. ORIGINAL BEARING TREE, A 37" DIA. CANYON LIVE OAK, BEARS N65°E (MAG) 25 LKS TO FACE OF TREE, 27 LKS TO E. OF TREE. I DO NOT OPEN THIS TREE.
1 SCRIBE A 12" BLACK OAK BEARS S9°E (MAG.) 32 LKS TO CENTER.
1 SET A 3" DIA. ALUMINUM U.S.F.S. MONUMENT, L.S. 4208 IN MOUND OF STONE.

RECORD OF SURVEY
S 1/2 SW 1/4, SECTION 29, T21N, R8E, M.D.M., UNINCORPORATED AREA OF PLUMAS CO., CALIFORNIA.
FOR SOPER-WHEELER CO.

SURVEYORS STATEMENT
THIS MAP CORRECTLY REPRESENTS A SURVEY MADE BY ME OR UNDER MY DIRECTION IN CONFORMANCE WITH THE REQUIREMENTS OF THE LAND SURVEYORS ACT AT THE REQUEST OF SOPER-WHEELER CO.
IN JUNE 1987.

John D. Christofferson
JOHN D. CHRISTOFFERSON L.S. 4208

EXP. 6/30/88

COUNTY SURVEYORS STATEMENT
THIS MAP HAS BEEN EXAMINED IN ACCORDANCE WITH SECTION 8766 OF THE LAND SURVEYORS ACT THIS 18th DAY OF August, 1987.

Lawrence J. Brock
LAWRENCE J. BROCK R.C.E. 13528
COUNTY SURVEYOR

RECORDERS STATEMENT
FILED THIS 18th DAY OF August, 1987, AT 2:52 P.M.
IN BOOK 7 RECORD OF SURVEYS P. 140, AT THE REQUEST OF THE COUNTY ENGINEER

FILE NO. 1383
FEE \$ 500

ILA DIGGS COUNTY RECORDER
Calvin J. Davis
BY DEPUTY

GDA

ENGINEERING SURVEYING PLANNING
220 GRAND AVE.
OROVILLE, CALIF. 95965
(916) 533-2068
87-053

SHEET 1 OF 1