

① SECTION CORNER : 25-26-35-36

GLO: A cedar stake 4x4x36 in. in rock mound from which bears: a 20" pitch pine, N14°E, 40 links, a 30" pitch pine, S5°E, 50 links, and a 24" pitch pine, S48°W, 70 links.

Record: A 1" I.P. with tag LS 3202 in mound of stones at intersection of fences from which bears: a 12" pine with K tag, N77°E, 15.9 feet, and an 18" pine with an attention sign, S5°E, 19.7 feet. (R4)

Found: Not searched for

② 1/4 SECTION CORNER 25-36

GLO: A cedar post 3x4x36 in. in rock mound from which bears: a 40" pitch pine, S22 1/2°E, 16 links, and a 36" cedar, S62°W, 25 links.

Found: A 3/4" I.P., 2 1/2" dia. Alum. cap CAF 1962 in a mound of stone, (from which bears a 12" pine with K tag, N86°E, 16.01 feet) R4
24" rotted stump S20°E 11.72' w/k-tag to 1935
Set 1" plastic tag RCE 22836 (wired to pipe)

③ SECTION CORNER : 30-25-36-31

Original Corner: A stone in a stone mound with four bearing trees (R6).

Record: A standard BLM brass cap monument in a mound of stones marked BLM 1975 from which bears: a 13" cedar with K tag, N84°E, 22.8 feet, a 10" cedar with K tag, S57°W, 46.3 feet, a 24" fir with K tag, S34°E, 41.5 feet, a 14" decayed pine stump with K tag, S14°W, 38.5 feet, and a 6" pine with K tag, N53°W, 24.2 feet. (R4)

Found: Not searched for

④ 1/4 SECTION CORNER 35-36

GLO: A cedar stake 4x4x36 in. in a rock mound from which bears: a 30" spruce, N19°E, 40 links, and a 20" pitch pine, N67 1/2°W, 55 links.

Found: A 2" I.P., 2 1/4" Alum. cap, LS 4636 (from which bears: a 12" Y pine, N3°30 1/2°E, 28 feet, and a 15" Y pine, N11°32 1/2°E, 54.35 feet.) R3

⑤ CENTER OF SECTION 36

Found: A 1" plastic pipe S8°21'39"W 60.91 (no record)

Set: 1/2" rebar 1" plastic tag RCE 22836. Point lies about 15' south of creek bed.

⑥ 1/4 SECTION CORNER 36-31

GLO: A granite stone 16x9x5 in. in a stone mound from which bears: a 5" oak, S83°E, 18 links, and a 36" pine, N65°W, 42 links.

Record: A 2" I.P. marked LS 4036 in mound of stones from which bears: a 10" oak with K tag, N32°W, 27.1 feet, a 7" dead oak with K tag, S83°E, 2.5 feet, a 10" fir (which reads "1/4, 531, BT"), S79°E, 21.5 feet, and a 4" pine (which reads "1/4, 536, BT"), S71°W, 16.5 feet. (R4)

Found: 2" I.P. LS 4636 in stone mound.
12" oak N38°W 41 lks w/ k-tag
6" pine S71°E 16.5' w/ k-tag
12" pine S79°E 21.5' w/ k-tag

⑦ SOUTH 1/6 CORNER 35-36

Set: 1/2" rebar with 1" plastic tag RCE 22836

Found: 1" iron pipe in stone mound tag RCE 26870 (R2)
S46°01'38" W 448'

⑧ CENTER SOUTH 1/6 CORNER SECTION 36

Set: 1/2" rebar RCE 22836

⑨ SECTION CORNER : 35-36-1-2

GLO: A stone 15x6x6 in. in a stone mound from which bears: an 18" pitch pine, N89°W, 38 links, an 8" oak, N45 1/2°E, 42 links, and an 18" pitch pine, S66°E, 92 links.

Record: (A 3/4" rebar in a rock mound with tag RCE 13528 in large stone mound) R5
(A 1" pipe in rock mound) R5

Found: 3/4" steel bar in Mol. with brass tag RCE 13528
24" oak N77°E 43 1/2 lks w/ blaze, k-tag
Also found remains of 18" pine (N89°W 38 lks), and 18" pine (S66°E 92 lks)

⑩ 1/4 SECTION CORNER 36-1

GLO: A stone 12x8x6 in. in a stone mound from which bears a 20" pitch pine, S21°W, 30 links.

Record: (A large stone mound) R5

Found: USDA 3" Alum cap "1973" in rock mound
6" oak S43°E 25 lks w/ k-tag
36" sugar pine S18°W 27 lks w/ k-tag

⑪ SECTION CORNER : 31-6-1-36

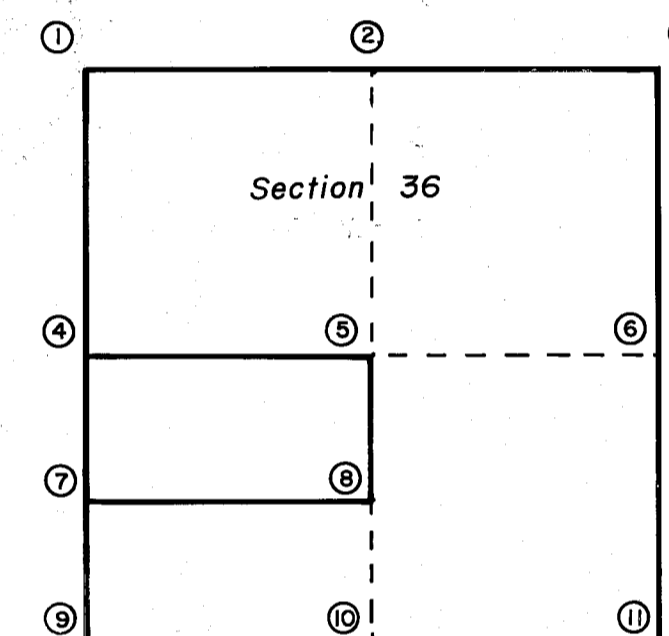
GLO: A stone 15x8x6 in. in a stone mound from which bears: a 30" pitch pine, S32°E, 57 links, a 6" oak, N73°E, 51 links, and a 36" pitch pine, N30 1/2°W, 260 links.

Record: A large mound of stones with a wagon wheel axle tagged "RCE 26870 (R,)"

Found: Not searched for

LEGEND

- R1 Record per 6PM91
- R2 Record per 5RS92
- R3 Record per 2RS35
- R4 Record per 5RS3
- R5 Record per 5PM7



No Scale

RECORD OF SURVEY

for

TIMOTHY R. & CAROL L. MANLY
6678 Dogtown Rd.
Coulterville, CA. 95311 (201) 878-3546

Within Section 36, T27N, R9E MDBM
near Greenville, Plumas County, CA.

Engineer: Clifford Brown Engineering
Rt. 1 Box 480 B
Quincy, CA. 95971
(916) 283-3959