

HISTORY OF SURVEYS

The original survey of T.21N., R.9E., was performed by D.C. Hall, GLO surveyor, in 1881.

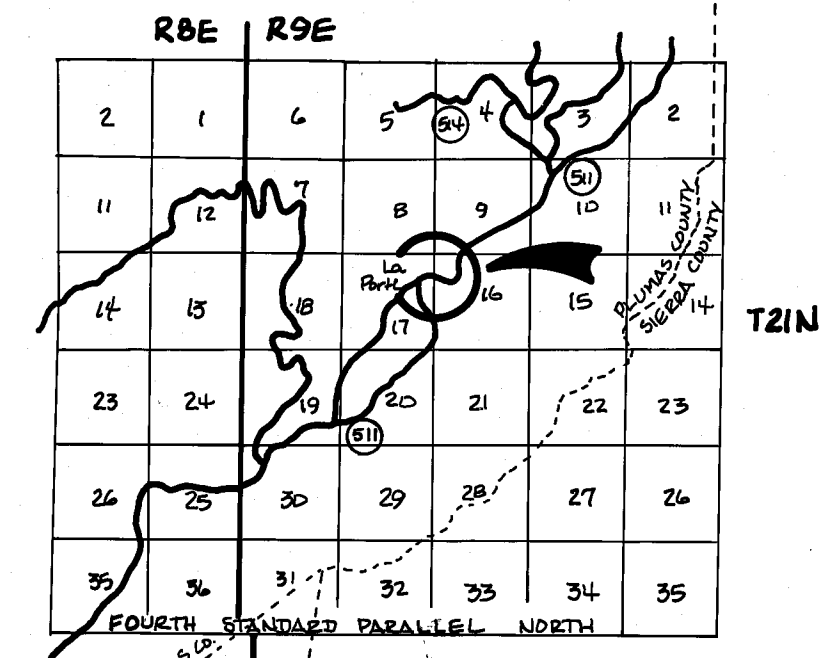
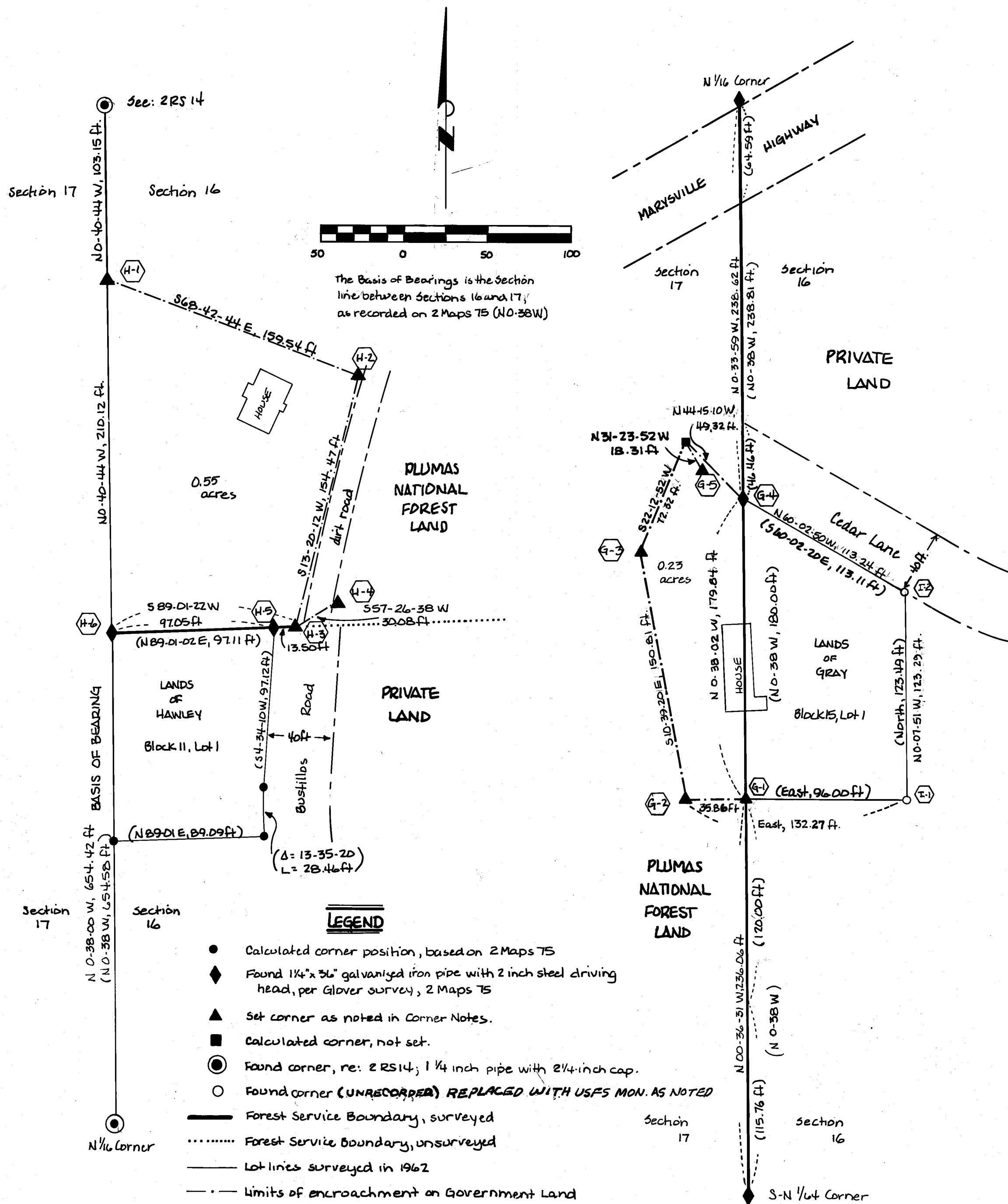
In 1962, Norman D. Glover, LS 1880, surveyed the town of La Porte. His map is recorded in Book 2, Page 75, of Maps, Record of Survey.

CORNER NOTES

- (G-1) Set a Std. U.S.F.S. drive-in monument, up 18 inches in a mound of stone. (GRAY No. 1, S16, T21N R9E, LS 5623, 1986)
- (G-2) Set a Std. U.S.F.S. drive-in monument, up 18 inches in a mound of stone. (T21N R9E, S17, NO. 2, LS 5623, 1986)
- (G-3) Set a Std. U.S.F.S. drive-in monument, up 18 inches in a mound of stone. (T21N R9E, S17, NO. 3, LS 5623, 1986)
- (G-4) Found a 1/4 inch ODIP, with a 2 1/4 inch cap, up 12 inches and bent over. Straightened up. Corner lies in fir root crown. (S17, S16, LOT 1, LS 5623, 1987)
- (G-5) Set a Std. U.S.F.S. drive-in monument, flush in a 12 inch mound of stone. (RM 131, LS 5623, 1986)
- (H-1) Set a Std. U.S.F.S. drive-in monument, up 4 inches in a mound of stone. (T21N R9E, HAWLEY, S16, NO. 1, LS 5623, 1986)
- (H-2) Set a Std. U.S.F.S. drive-in monument, flush in a 24 inch mound of stone. (T21N R9E, HAWLEY, S16, NO. 2, LS 5623, 1986)
- (H-3) Set a Std. USFS. drive-in monument, flush in a 30 inch mound of stone. (HAWLEY, NO. 3, LS 5623, 1986)
- (H-4) Set a Std. U.S.F.S. drive-in monument, flush in a 24 inch mound of stone. (RM 30.08, LS 5623, 1986)
- (H-5) Found a 1/4 inch ODIP, with a 2 1/4 inch cap, flush in the ground. (S16, LOT 1, LS 5623, 1987)
- (H-6) Found a 1/4 inch ODIP, with a 2 1/4 inch cap, up 4 inches in a 24 inch mound of stone. (S17, S16, LOT 1, LS 5623, 1987)
- (I-1) Found a 3/4 inch ODIP; set a Std. USFS. drive-in monument, flush in ground. (Lot 1, LS 5623, 1987)
- (I-2) Found a 3/4 inch ODIP; set a Std. U.S.F.S. drive-in monument, flush in ground. (Lot 1, LS 5623, 1987)

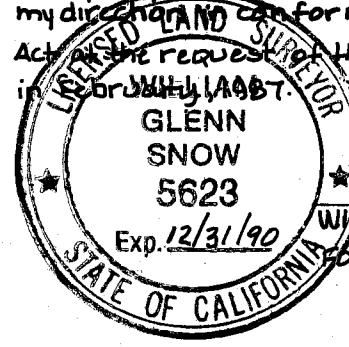
NOTES: A Standard U.S. Forest drive-in monument is a 5/8-inch diameter by 36 inch long aluminum rod with a 3-1/4 inch diameter aluminum cap attached.

The purpose of this survey was to identify encroachments on F.S. land which should be resolved under the Small Tracts Act.



SURVEYOR'S STATEMENT

This map represents a survey made by me or under my direct supervision in performance with the Land Surveyor's Act as required by the United States Forest Service in accordance with the requirements of the Act.



William G. Snow
WILLIAM G. SNOW, LS 5623
FOREST LAND SURVEYOR

COUNTY SURVEYOR'S STATEMENT

This map has been examined in accordance with Section 8766 of the Land Surveyor's Act this 10th day of December, 1987.

Lawrence J. Brock
by *R. Tom Sumner RCE 30515*
LAWRENCE J. BROCK, RCE 13528
PLUMAS COUNTY SURVEYOR

RECORDER'S STATEMENT

Filed this 10th day of December, 1987, at 10:30 A.M., in Book 8 of Records of Survey, at Page 3, at the request of the County Surveyor.

Fee \$ 500
File No. 4556
ILA DIGGS
COUNTY RECORDER

by *Jessie J. Bravis*
DEPUTY

RECORD OF SURVEY

Located in Sections 16 and 17, T. 21N., R. 9E., Mount Diablo Meridian County of Plumas, State of California, For the Plumas National Forest