

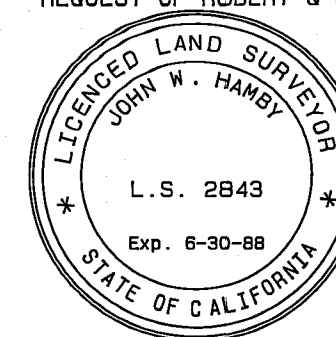
BASIS OF BEARING
N 67°13'00" E 660.00' (R)
N 67°13'00" E 668.73'

BASIS OF BEARING

THE BASIS OF BEARING IS THE NORTH SIDE OF
SPRUCE AVE. BETWEEN 1st. ST. & 3rd. ST.
SHOWN AS N 67° 13' 00" E ON 2 M 43.
PLUMAS COUNTY RECORDS.

SURVEYOR'S STATEMENT

THIS MAP CORRECTLY REPRESENTS A SURVEY MADE BY ME OR UNDER MY DIRECTION
IN CONFORMANCE WITH THE REQUIREMENTS OF THE LAND SURVEYOR'S ACT AT THE
REQUEST OF ROBERT & SHIRLEY NEYHOUSE IN NOVEMBER, 1987.



John W. Hamby
JOHN W. HAMBY L.S. 2843

COUNTY SURVEYOR'S STATEMENT

THIS MAP HAS BEEN EXAMINED IN ACCORDANCE WITH SECTION 8766 OF THE LAND
SURVEYOR'S ACT THIS 31st DAY OF December, 1987.

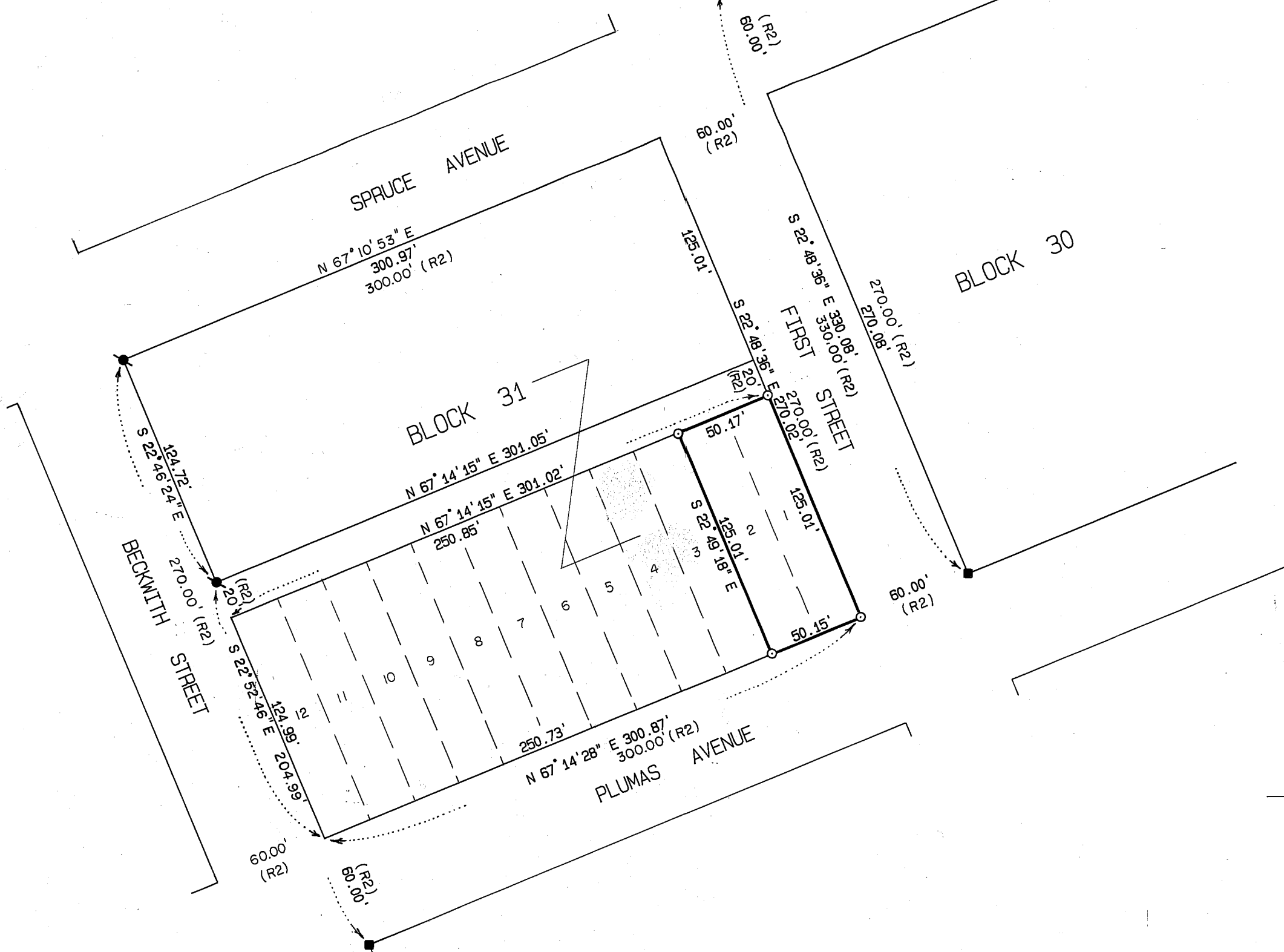
Lawrence J. Brock
LAWRENCE J. BROCK R.C.E. 13528

COUNTY RECORDER'S STATEMENT

FILED THIS 31st DAY OF December, 1987, AT 10:40 AM IN BOOK 8 OF
RECORDS OF SURVEYS, AT PAGE 8, AT THE REQUEST OF THE COUNTY ENGINEER.

FEE: \$ 500
FILE No. 4987

ILA DIGGS
COUNTY RECORDER
Beto Cammack
BY DEPUTY



LEGEND

- FOUND 3/4" OPEN I.P. set tag L.S. 2843
 - FOUND 1/2" REBAR no tag - set tag L.S. 2843
 - FOUND 1/2" REBAR with tag L.S. 3297
 - SET 5/8" REBAR with ALUM. CAP L.S. 2843
 - (R) RECORD per 2 M 43
 - (R2) RECORD per BK. A OF PLATS PG. 32 (distance only)
- NORTHERN ADDITION TO PORTOLA TOWNSITE

RECORD OF SURVEY FOR ROBERT & SHIRLEY NEYHOUSE

LOTS 1 & 2 BLOCK 31
NORTHERN ADDITION TO PORTOLA

A Portion of SECTION 36
T. 23 N., R. 13 E., M.D.B. & M.
Portola - Plumas County - California
Scale 1 in. = 60 ft. Nov., 1987

HAMBY SURVEYING INC.
P.O. BOX 1209 ph. (916) 832-5571
PORTOLA, CALIFORNIA 96122