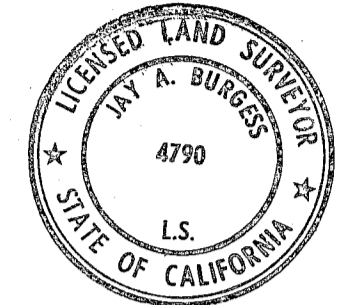


SURVEYORS STATEMENT

This map correctly represents a survey made by me or under my direction in conformance with the requirements of the Land Surveyors Act at the request of Collins Pine Co. & Don Townsend in October, 1987.

Jay P. Burgess
 Jay P. Burgess LS4790
 L.C. Exp. 30 SEPT 88



COUNTY SURVEYORS STATEMENT

This map has been examined in accordance with Section 8766 of the Land Surveyors Act this 29th day of January, 1988.

Lawrence J. Brock
 Lawrence J. Brock RCE 13528

COUNTY RECORDERS STATEMENT

Filed this 29th day of January, 1988 at 1:35 P.M. in Book 9 of Record of Surveys at Page 13 Plumas County Records at the request of the County Engineer.

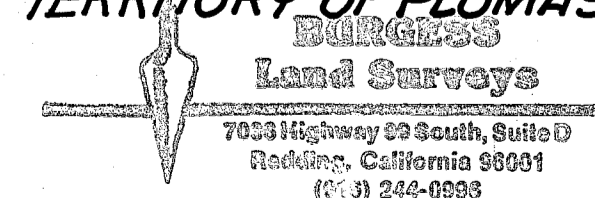
By *Jeffrey J. Reavis*
 Jeffrey J. Reavis
 File No. 5473 11a, Diggs
 County Recorder

BASIS OF BEARINGS~

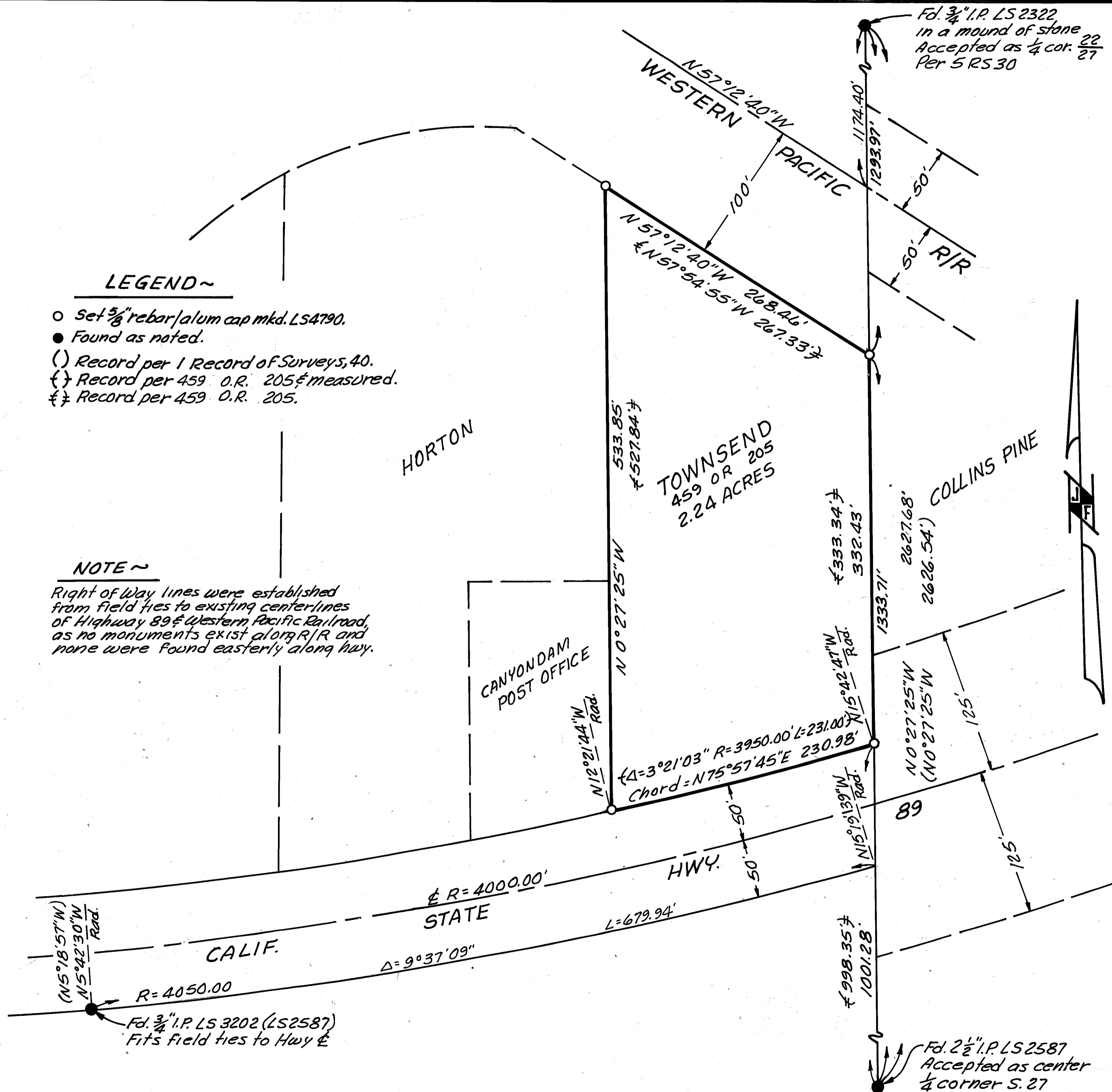
The bearing (N0°27'25"W) between found monuments on the North-South centerline of section 27 as shown on the map recorded in Book 1 of Record of Surveys, Page 40.

RECORD OF SURVEY FOR COLLINS PINE CO.

£ DON TOWNSEND
 IN THE NW ¼ OF SEC. 27, T. 27N., R. 8E., M.D.M., IN THE UNINCORPORATED TERRITORY OF PLUMAS CO., CALIF.



SCALE: 1"=60'
 DECEMBER, 1987
 JIM FOSTER SR.
 SHEET 1 OF 1



LEGEND~

- Set 5/8" rebar/alum cap mkd. LS4790.
- Found as noted.
- () Record per 1 Record of Surveys, 40.
- { } Record per 459 O.R. 205 & measured.
- £ } Record per 459 O.R. 205.

NOTE~

Right of Way lines were established from field ties to existing centerlines of Highway 89 & Western Pacific Railroad, as no monuments exist along R/R and none were found easterly along hwy.