

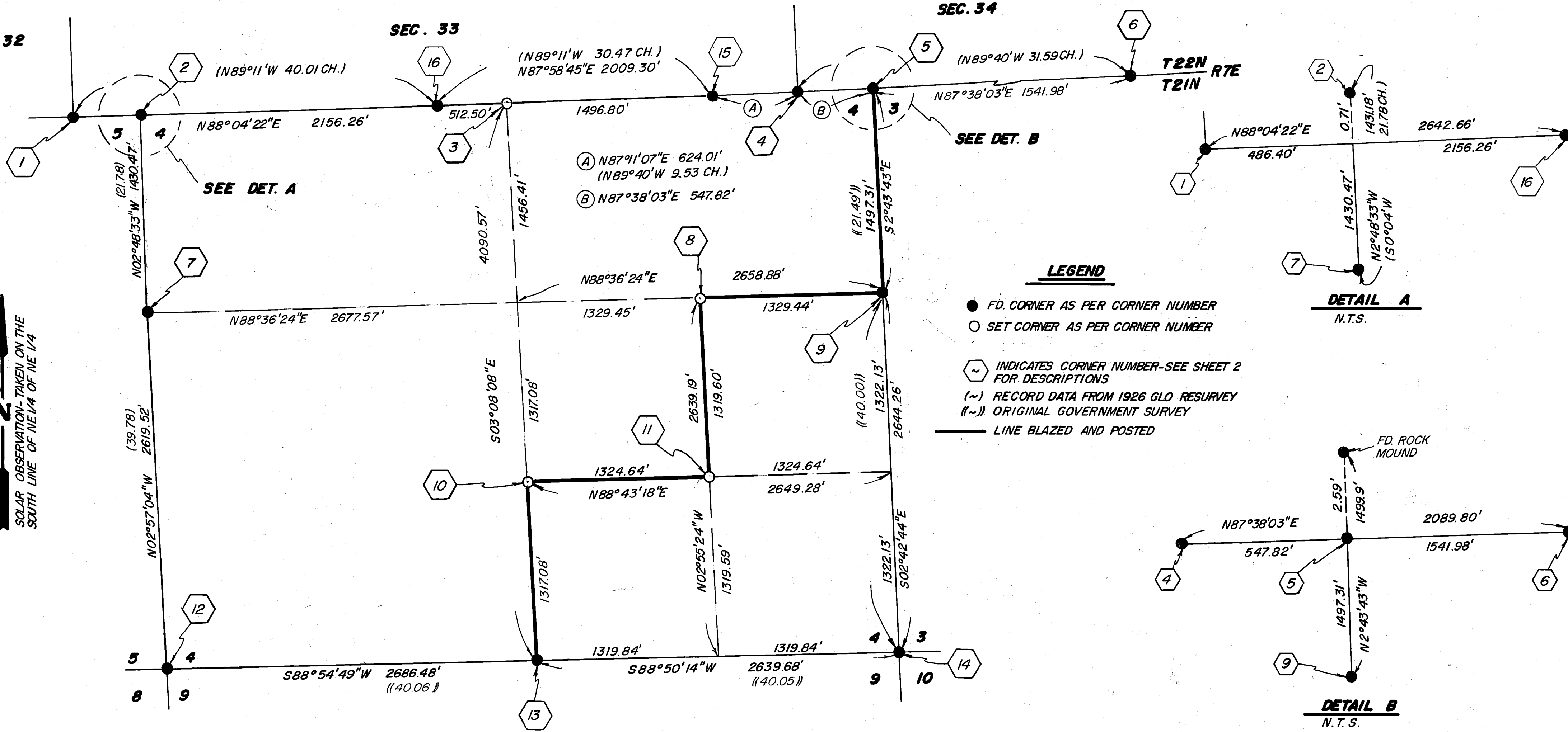
SEC. 32

SEC. 33

SEC. 34

T22N R7E
T21N

BASIS OF BEARING
N
SOLAR OBSERVATION - TAKEN ON THE SOUTH LINE OF NE 1/4 OF NE 1/4



LEGEND

- FD. CORNER AS PER CORNER NUMBER
- SET CORNER AS PER CORNER NUMBER
- ⬡ INDICATES CORNER NUMBER-SEE SHEET 2 FOR DESCRIPTIONS
- (---) RECORD DATA FROM 1926 GLO RESURVEY
- (—) ORIGINAL GOVERNMENT SURVEY
- LINE BLAZED AND POSTED

DETAIL A
N.T.S.

DETAIL B
N.T.S.

COUNTY SURVEYORS STATEMENT

THIS MAP HAS BEEN EXAMINED IN ACCORDANCE WITH SECTION 8766 OF THE LAND SURVEYORS ACT THIS 8TH DAY OF September, 1988

SIGNED Lawrence J. Brock
PLUMAS COUNTY SURVEYOR
LAWRENCE J. BROCK, RCE 13528

COUNTY RECORDERS STATEMENT

FILED THIS 8TH DAY OF September, 1988, AT 2:20 P.M. IN BOOK 8 OF Record of Surveys, AT PAGE 3534 AT THE REQUEST OF THE COUNTY ENGINEER

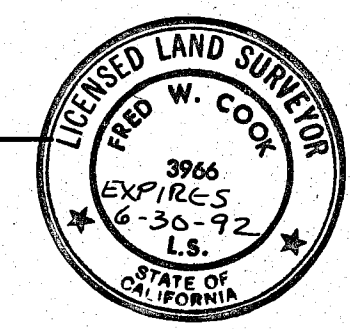
ILA DIGGS
PLUMAS COUNTY RECORDER
BY Bob Cammack
DEPUTY

FEE \$ 7⁰⁰ FILE NO. 2186

SURVEYORS STATEMENT

THIS MAP CORRECTLY REPRESENTS A SURVEY MADE BY ME OR UNDER MY DIRECTION IN CONFORMANCE WITH THE REQUIREMENTS OF THE LAND SURVEYORS ACT AT THE REQUEST OF THE USDA FOREST SERVICE IN JUNE 1988

SIGNED Fred W. Cook
FRED W. COOK, LS 3966



RECORD OF SURVEY

FOR THE USDA FOREST SERVICE

BEING IN SECTION 4, T21N, R7E, M.D.M., IN THE UNINCORPORATED TERRITORY OF PLUMAS COUNTY, STATE OF CALIFORNIA



SCALE 1"=500'
DATE JUNE 1988
SHEET 1 OF 2