

BASIS OF BEARINGS

SOUTH LINE OF SECTION 28 - N89°51'00"E AS PER 4-R/S-4.

LEGEND

- ◆ - FOUND A STANDARD B.L.M. (BUREAU OF LAND MANAGEMENT) MONUMENT - A 3/4" BRASS CAP MARKED FOR CORNER (1967) ON 2 1/2" IRON PIPE SET IN MOUND OF ROCKS.
- ◆ - FOUND A STD. U.S.F.S. MONUMENT - A 3/4" ALUM. CAP MARKED FOR CORNER ON 2 1/2" ALUM. PIPE SET IN ROCK MOUND
- - SET A STD. U.S.F.S. MONUMENT (DESCRIBED ABOVE) MONUMENT HAS PLASTIC BASE WITH MAGNET INSIDE. SET IN A ROCK MOUND
- ② - REFERENCE NUMBER FOR CORNER DESCRIPTION STARTING ON PAGE 3.
- (R₂) - DATA AS PER 4-R/S-4
- (R₄) - DATA AS PER 5-R/S-106
- (R₂) - DATA AS PER 4-R/S-109
- (R₄) - DATA AS PER 7-R/S-115
- [G] - DATA AS PER G.L.O. NOTES MINTO, 1880
- - REPRESENTS A POSTED AND MARKED BOUNDARY LINE

DISTANCES SHOWN HEREON ARE IN FEET AND DECIMAL PORTIONS THEREOF.

- (R₂) - DATA AS PER 7-R/S-85
- (R₂) - DATA AS PER 7-R/S-93

SURVEYOR'S STATEMENT

THIS MAP CORRECTLY REPRESENTS A SURVEY MADE BY ME OR UNDER MY DIRECTION IN CONFORMANCE WITH THE REQUIREMENTS OF THE LAND SURVEYOR'S ACT AT THE REQUEST OF THE U.S.D.A. FOREST SERVICE IN JUNE, 1988.

Gary T. Lippincott
GARY T. LIPPINCOTT
LS 3634



COUNTY SURVEYOR'S STATEMENT

THIS MAP HAS BEEN EXAMINED IN ACCORDANCE WITH SECTION 8766 OF THE LAND SURVEYOR'S ACT THIS 17th DAY OF October, 1988.

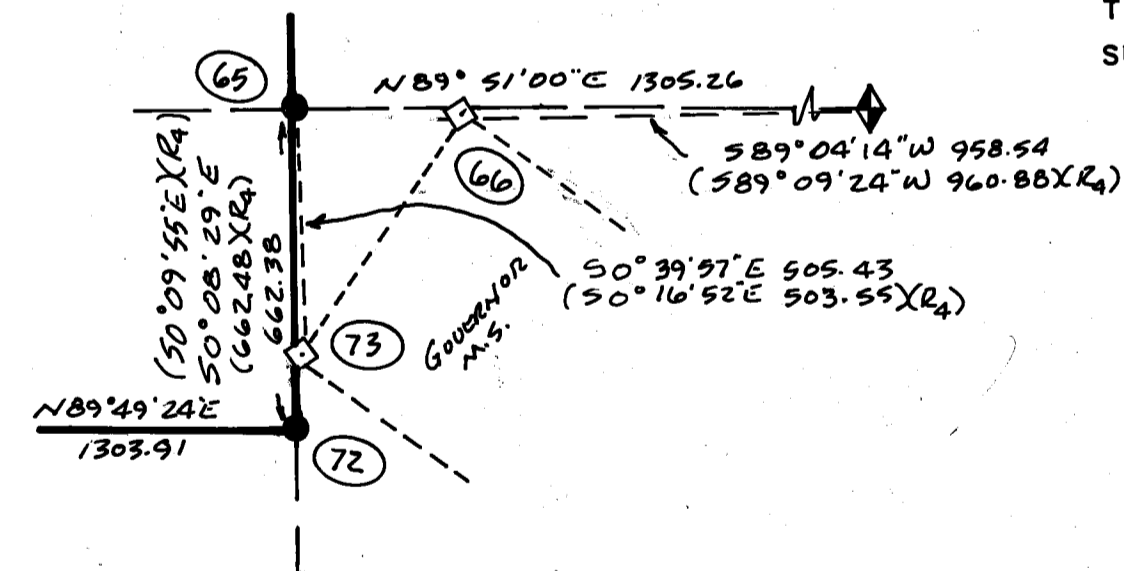
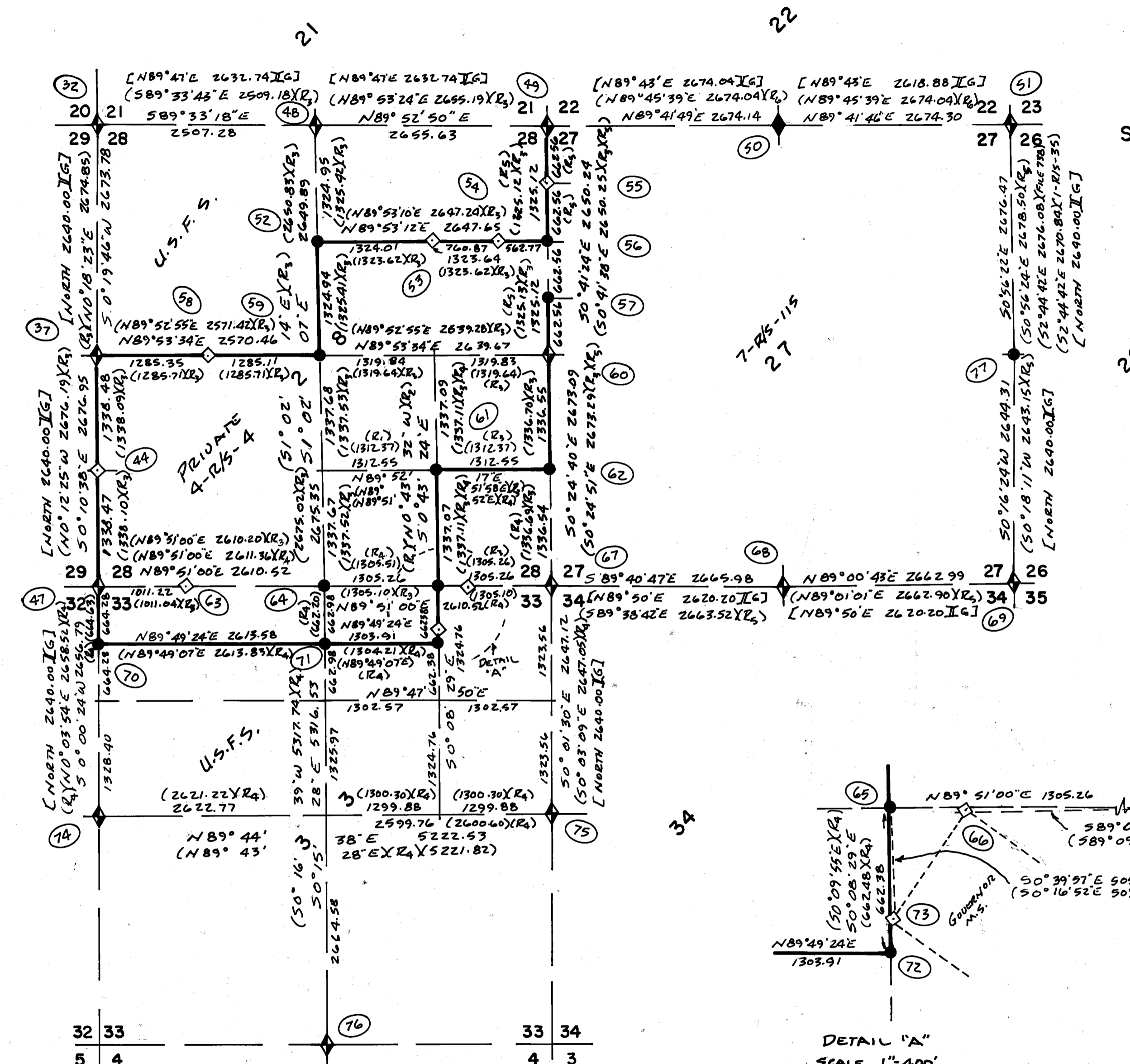
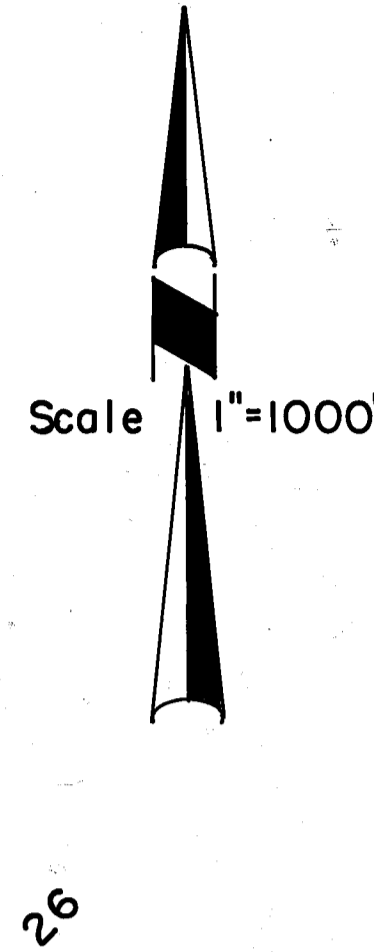
Lawrence J. Brock
by *R. Tom Hunter* R.C.E. 30515
LAWRENCE J. BROCK, R.C.E. 13528
PLUMAS COUNTY SURVEYOR

RECORD OF SURVEY

FOR
U.S.D.A. - PLUMAS NATIONAL FOREST
'BUTTERFLY CADASTRAL SURVEY'

Being portions of Sections 17, 20, 27, 28, 29 and 33
T. 25 N. - R. 9 E. - M.D.M.
PLUMAS CO., CA
JUNE, 1988

LIPPINCOTT SURVEYING
1007 BILLE ROAD - P.O. BOX 671 - PARADISE, CA 95967
Ph. 916/877-4300



COUNTY RECORDER'S STATEMENT

FILED THIS 17th DAY OF October, 1988,
AT 2:45 P.M. IN BOOK 8 OF RECORD OF
SURVEYS, AT PAGE 39-43, AT THE REQUEST
OF THE COUNTY SURVEYOR.
FEE \$ 1300
FILE NO. 3756

ILA DIGGS
PLUMAS COUNTY RECORDER
BY *Birdy Carmack*
DEPUTY

