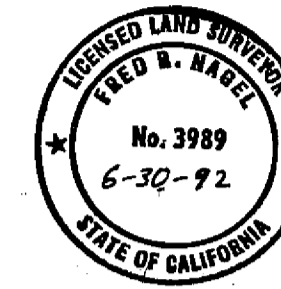


7 8  
18 17

**SURVEYOR'S STATEMENT:**  
This map correctly represents a survey made by me or under my direction in conformance with the requirements of the Land Surveyor's Act at the request of Thornton Lee in June, 1987.



*Fred R. Nagel*  
Fred R. Nagel, L.S. 3989

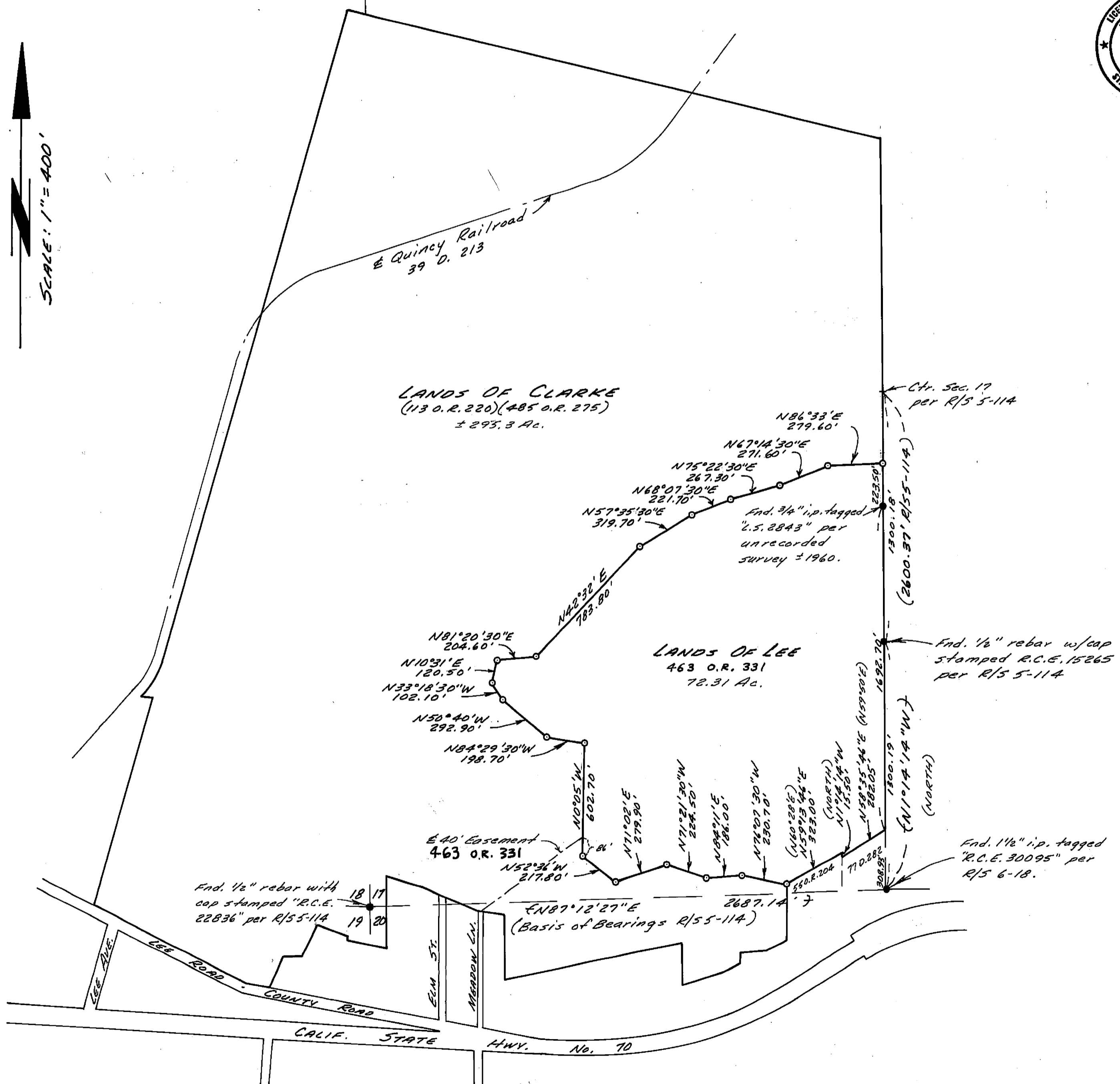
**COUNTY SURVEYOR'S STATEMENT:**  
This map has been examined in accordance with Section 8766 of the Land Surveyor's Act this 22<sup>ND</sup> day of NOVEMBER, 1988.

*Lawrence J. Brock*  
Lawrence J. Brock, Plumas Co. Surveyor, R.C.E. 13528

**COUNTY RECORDER'S STATEMENT**  
Filed this 23<sup>RD</sup> day of NOVEMBER, 1988, at 10:10 A.M. in Book 8 of Record of Surveys at page 48 at the request of the County Engineer.  
Fee: 5.00 File No. 4826  
Ila Diggs, Plumas County Recorder

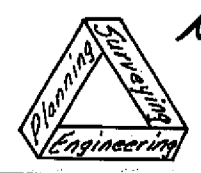
by *Robert Williams*  
Deputy

- LEGEND**
- Found monuments as noted.
  - Set 1/2" rebar with cap stamped "L.S. 3989".
  - ( ) Indicates Deed record except as noted.
  - ± Indicates Measured and Record per R/S 5-114.



SCALE: 1" = 400'

**RECORD OF SURVEY FOR THORNTON R. LEE**  
IN SECTIONS 17, 18, 19, & 20, T. 24N., R. 10E., M.D.B. & M.  
PLUMAS COUNTY, CALIFORNIA  
SCALE: 1" = 400'



NST Engineering Associates, Inc.  
45 South Roop Street  
Susanville, California  
916-257-5173