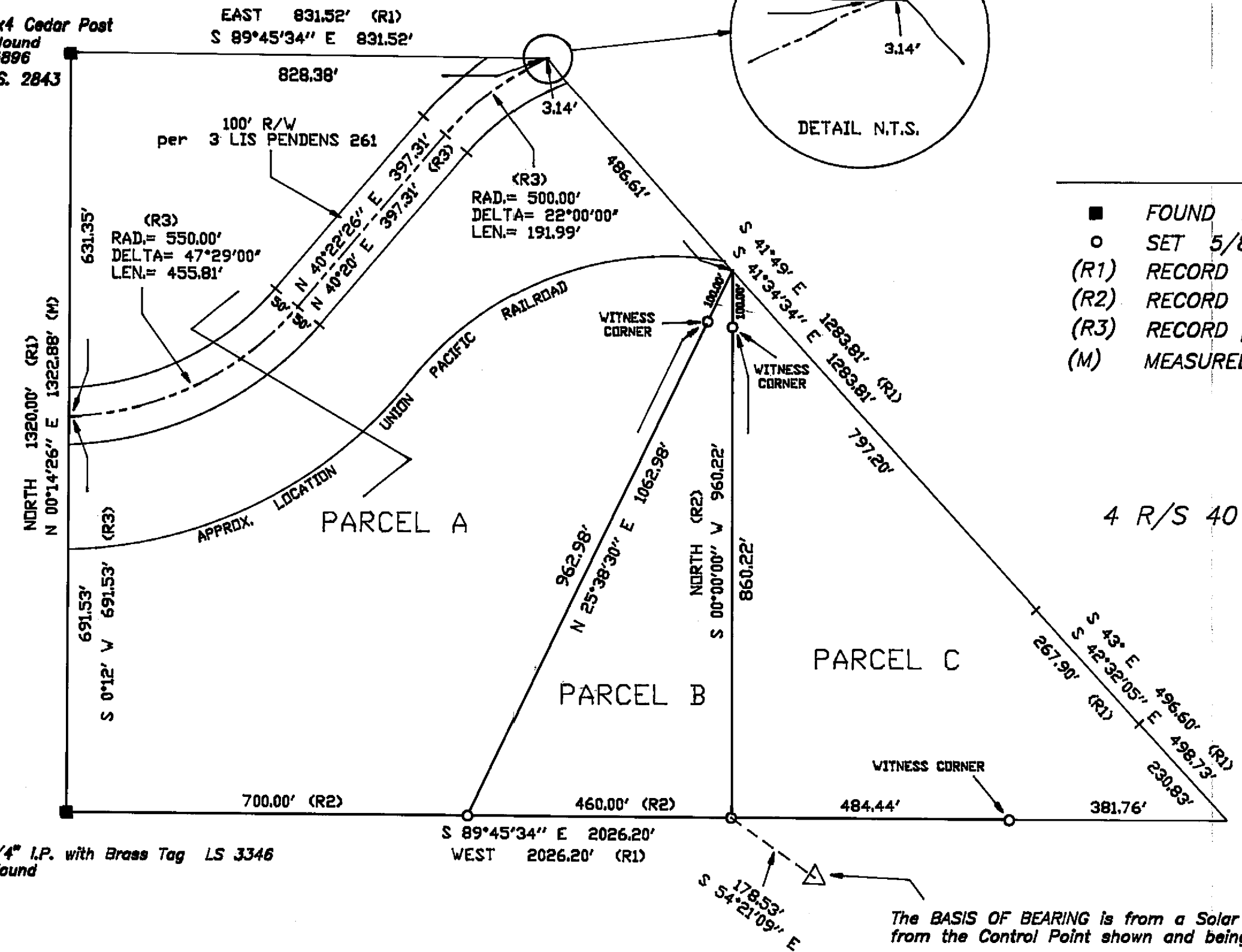
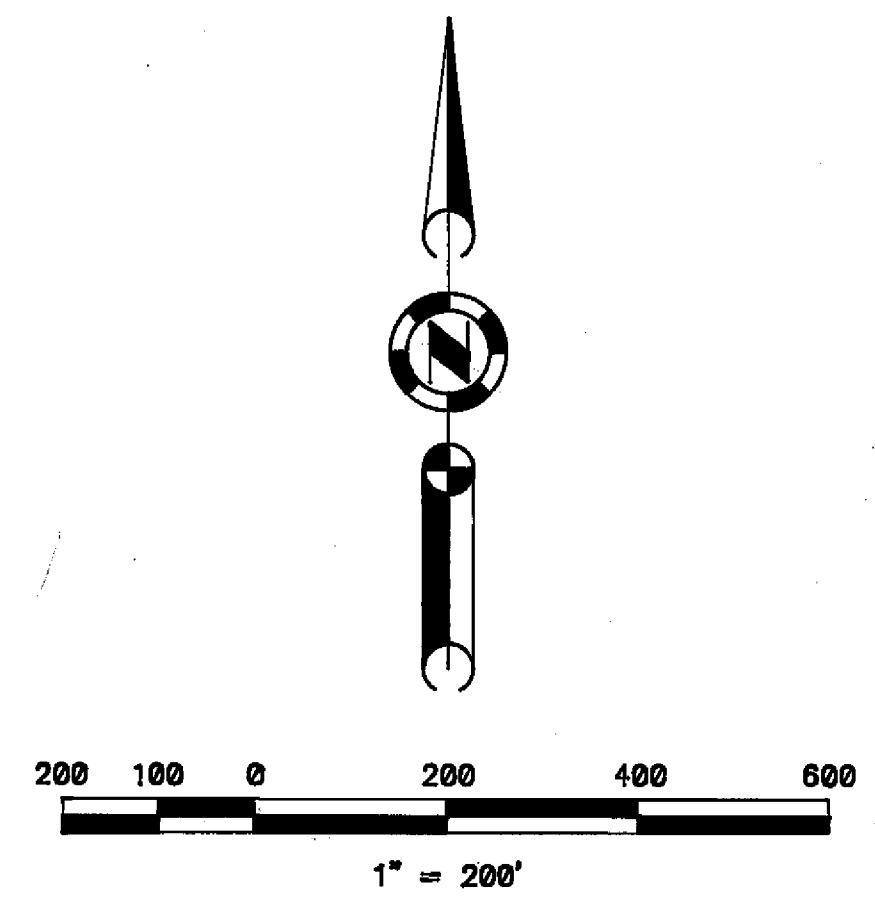


FOUND 4x4 Cedar Post
in Stone Mound
Scribed #5896
Set tag L.S. 2843



FOUND 3/4" I.P. with Brass Tag LS 3346
in Stone Mound



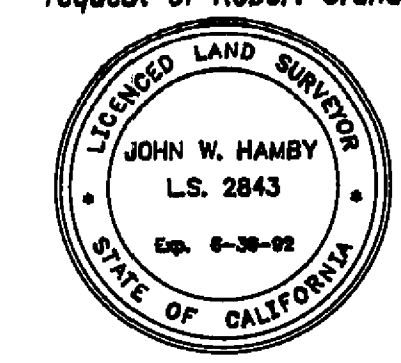
The BASIS OF BEARING is from a Solar Observation Taken
from the Control Point shown and being S 54°21'09" E.

LEGEND

- FOUND Point as described
- SET 5/8" Rebar & Plastic Cap LS 2843
- (R1) RECORD per 9 PATENTS 320
- (R2) RECORD per 1 FW 98
- (R3) RECORD per Vol. 3 LIS PENDENS P.261
- (M) MEASURED

SURVEYOR'S STATEMENT

This map correctly represents a survey made by me or under my direction in conformance with the requirements of the Land Surveyor's Act at the request of Robert Graham in September, 1988.



John W. Hamby
John W. Hamby L.S. 2843

COUNTY SURVEYOR'S STATEMENT

This map has been examined in accordance with Section 8766 of the Land Surveyor's Act this 28th day of November, 1988.

Lawrence J. Brock
Lawrence J. Brock R.C.E. 13528
PLUMAS COUNTY SURVEYOR

COUNTY RECORDER'S STATEMENT

Filed this 28th day of November, 1988 at 1:30 P.M.
in Book 8 of Record of Surveys, at page 49, at the request of
the County Engineer.

Fee \$ 500
File No. 4857
By *Ila Diggs*
Ila Diggs County Recorder
Deputy

NOTE: This Record of Survey was prepared to reflect a Land Division
Recorded in Book 1 of Final Waivers at Page 98.

RECORD OF SURVEY

FOR
Robert Graham Et Al

A portion of Sec.18 T.25 N. R.8 E. M.D.B.& M.
PLUMAS COUNTY - CALIFORNIA
Scale 1" = 200' Sept. 1988

HAMBY SURVEYING, INC.
P.O. Box 1209 ph.(916) 832-5571
PORTOLA, CA. 96122