

NW Cor. Sec. 25
in Rock Mound
18" Pine w/old Blaze
S 51° V 19.1'
16" Pine
w/ Placerville Lumber tag
S 24° E 13.0'

BASIS OF BEARING
S 89°51'35" E 1332.77' (R1)
S 89°51'35" E 1337.84' (M)

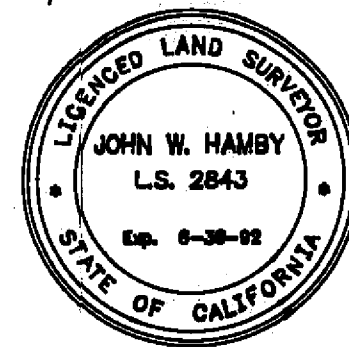
NOTE: The Basis of Bearing for the R.R. Right of Way was calculated using the bearing calculated across the North line of Section 25 from 33 DEEDS 573 and rotated to the measured bearing from the NW Cor. of Sec. 25 to the FOUND 1/16 Cor. shown on this Map.

5° CURVE (R5)
DELTA= 35°52' (R5)
RAD= 1145.86
LEN= 717.30 (R5)

CURVE	DELTA	RADIUS	LENGTH
C1	3°43'41"	1245.86'	81.06'
C2	5°55'41"	1245.86'	128.90'

SURVEYOR'S STATEMENT

This map correctly represents a survey made by me or under my direction in conformance with the requirements of the Land Surveyor's Act at the request of Lester J. & Barbara Reel in July, 1988.



John W. Hamby
John W. Hamby L.S. 2843

COUNTY SURVEYOR'S STATEMENT

This map has been examined in accordance with Section 8766 of the Land Surveyor's Act this 22nd day of NOVEMBER, 1988.

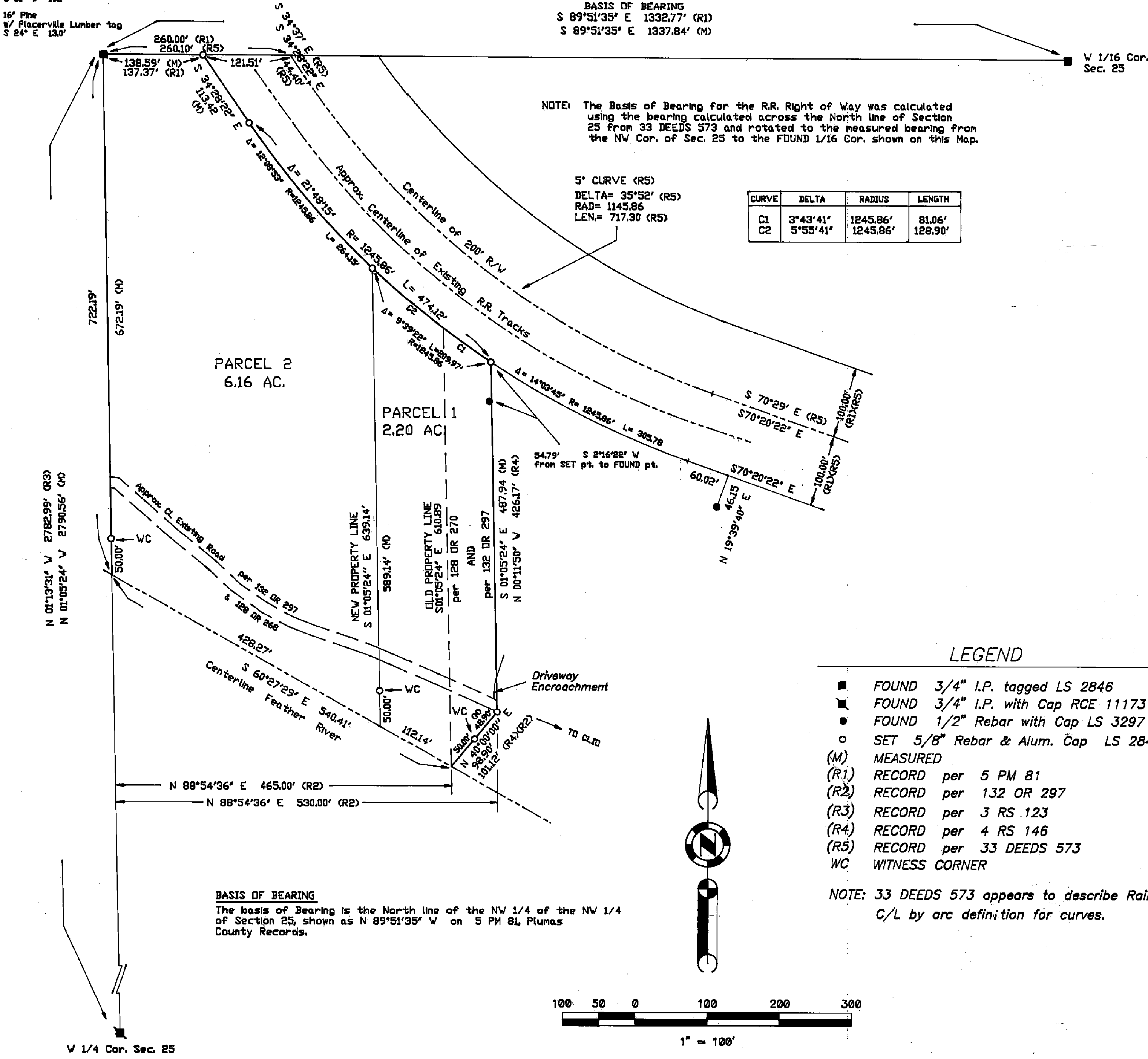
Lawrence J. Brock
Lawrence J. Brock R.C.E. 13528

COUNTY RECORDER'S STATEMENT

Filed this 5th day of JANUARY, 1988 at 10:45 a.m. in Book 6 of Record of Surveys, at page 54, at the request of the County Engineer.

Ila Diggs
County Recorder
Fee \$ 5.00
File No. 71
By *Beth Cammack*
Deputy

NOTE: This Record of Survey was prepared to reflect a Lot Line Adjustment for which a resolution is Recorded in Book 498 of Official Records at Page 277.



LEGEND

- FOUND 3/4" I.P. tagged LS 2846
- FOUND 3/4" I.P. with Cap RCE 11173 - inside 2" I.P.
- FOUND 1/2" Rebar with Cap LS 3297
- SET 5/8" Rebar & Alum. Cap LS 2843
- (M) MEASURED
- (R1) RECORD per 5 PM 81
- (R2) RECORD per 132 OR 297
- (R3) RECORD per 3 RS 123
- (R4) RECORD per 4 RS 146
- (R5) RECORD per 33 DEEDS 573
- WC WITNESS CORNER

NOTE: 33 DEEDS 573 appears to describe Railroad C/L by arc definition for curves.

RECORD OF SURVEY

FOR
Lester J. & Barbara Reel
- T. 22 N. R. 12 E. M.D.M. -
A portion of the NW 1/4 of Section 25
PLUMAS COUNTY - CALIFORNIA
Scale 1" = 100' July, 1988

HAMBY SURVEYING, INC.
P.O. Box 1209 ph.(916) 832-5571
PORTOLA, CA. 96122