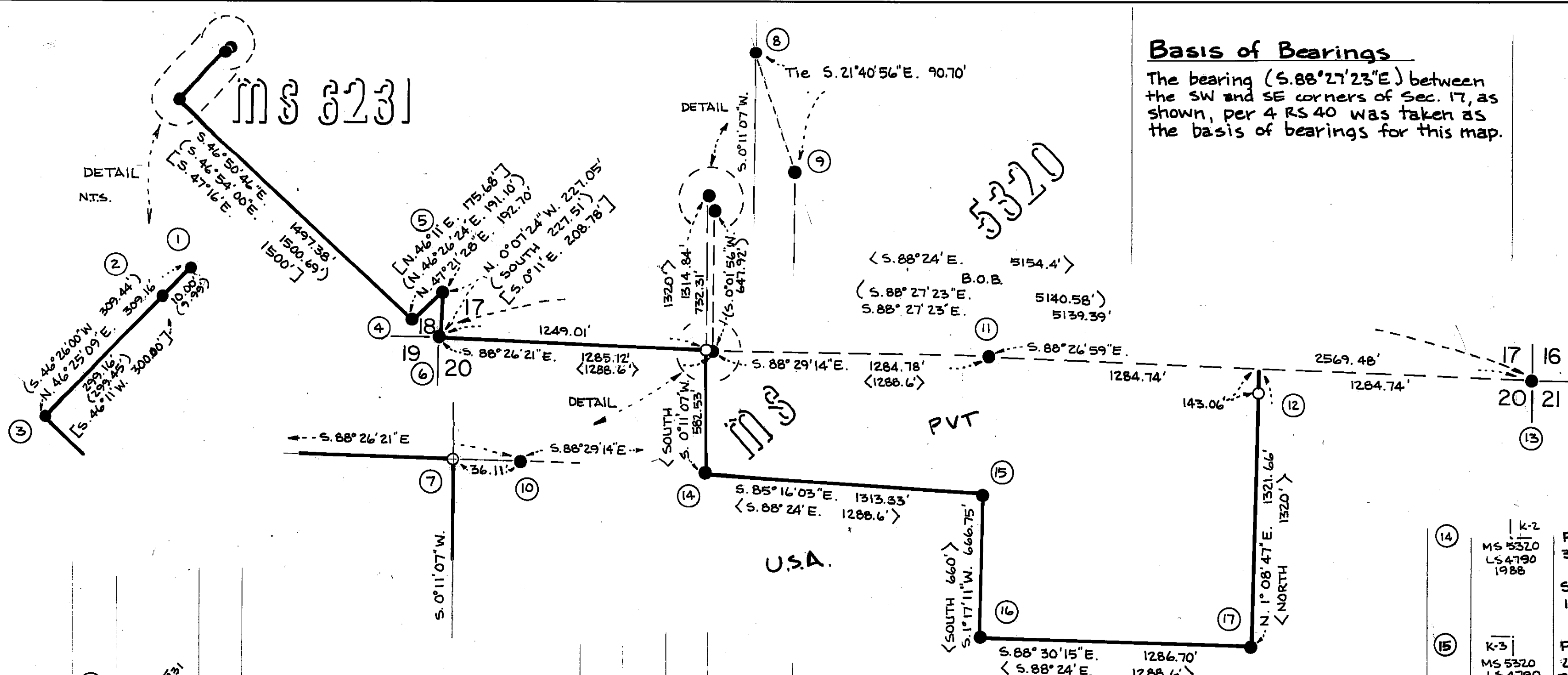


Basis of Bearings

The bearing (S.88°27'23"E) between the SW and SE corners of Sec. 17, as shown, per 4 RS 40 was taken as the basis of bearings for this map.

Legend

- Corners found
- Corners set this survey - ACAP - 2 1/2" alum. pipe w/ 3/4" alum. cap stamped as indicated in corner notes.
- [] Record data per GLO - MS 6231
- <-> Record data per GLO - MS 5320
- () Record data per 4 RS 40
- Property line marked per USFS specs.
- ② Key to corner notes
- IP - iron pipe
- BT - bearing tree



- ① S 1/16 6231 MS 4790 1988
- ② H-4 MS 6231 LS 4790 1989
- ③ H-1 MS 6231 LS 4790 1988
- ④ S 1/16 6231 MS 4790 1988
- ⑤ T25N R8E S 1/16 520 MS 5320 LS 4790 1988
- ⑥ WC W 1/16 520 MS 5320 LS 4790 1988
- ⑦ WC W 1/16 520 MS 5320 LS 4790 1988

Fd. 3/4" IP tagged LS 3634 per 4 RS 40
Replaced w/ ACAP in amos & mkd:
5" L. Oak N. 9° E. 6.5' x BT
4" L. Oak S. 26° W. 11.2' x BT

Fd. 2" IP tagged LS 3634 per 4 RS 40

Fd. 2" IP tagged LS 3634 per 4 RS 40
Replaced w/ ACAP in amos & mkd:
6" D. Fir S. 34° E. 22.7'
Fd. 9" L. Oak S. 89° E. 11.3' (GLO)

Fd. 5/8" pin w/ 2 1/2" cap LS 3634 per 4 RS 40
Replaced w/ ACAP in amos & mkd:
5" I. Cedar N. 47° W. 27.1' x BT
7" I. Cedar N. 65° E. 26.4'

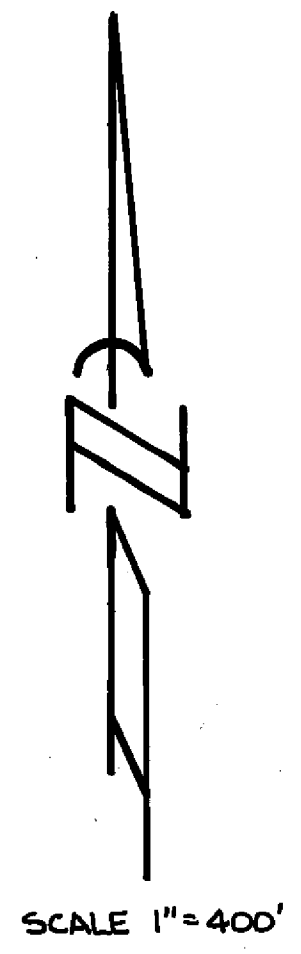
Fd. 3/4" IP tagged LS 3634 per 4 RS 40
Replaced w/ ACAP in amos & mkd:
4" D. Fir S. 45° W. 13.0'
4" D. Fir S. 2° E. 8.9'

Fd. 5/8" pin w/ 2 1/2" cap LS 3634 per 4 RS 40
Replaced w/ ACAP in amos
Fd. BTs: 9" D. Fir N. 30° E. 3.3'
5" Cedar stump S. 57° W. 20.5'
8" Cedar N. 65° W. 13.0'
Mkd: 6" W. Fir S. 68° W. 13.0'
4" W. Fir S. 60° E. 7.4'

Set ACAP at true intersection of Sec. Line and Line 1-2 MS 5320 in amos & mkd: 16" I. Cedar N. 5° E. 23.0'
14" D. Fir S. 32° W. 7.3'

- ⑧ K1 MS 5320 LS 4790 1988
Fd. BT - 21" P. Pine S. 25° W. 20.5' GLO
Set ACAP in amos & mkd:
8" D. Fir N. 50° W. 5.0'
- ⑨ Fd. 3/4" IP tagged LS 3634 for C-S-SW 1/64 per 4 RS 40.
- ⑩ T25N R8E W 1/16 517 COR 520 PROP - MEAS LS 3634
Fd. 5/8" pin w/ 2 1/2" cap LS 3634 per 4 RS 40
Fd. BTs:
10" I. Cedar N. 22° W. 12.0'
13" I. Cedar S. 34° W. 22.3'
- ⑪ T25N R8E W 1/16 520 COR 520 PROP - MEAS LS 3634
Fd. 5/8" pin w/ 2 1/2" cap LS 3634 per 4 RS 40
Fd. BTs: 19" D. Fir N. 40 1/2° W. 95.0'
18" S. Pine N. 63 3/4° W. 46.3'
Replaced w/ ACAP in amos & mkd:
4" W. Fir S. 14° E. 17.2' x BT
- ⑫ WC E 1/16 520 MS 5320 LS 4790 1988
True corner falls in R.R. tracks.
Set ACAP in amos for W.C. S. 1° 08' 47" W 143.06' & mkd BTs to W.C.:
6" I. Cedar S. 65° E. 31.9'
10" D. Fir S. 21° W. 55.2'
- ⑬ T25N R8E S 1/16 520 COR 520 PROP - MEAS LS 3634
Fd. 3/4" IP tagged RCE 14203 per 4 RS 40
Replaced w/ ACAP in amos.
Fd. BTs: 27" P. Pine N. 62 1/2° W. 25.1'
33" P. Pine N. 17 1/2° E. 10.6'
20" B. Oak S. 60 1/2° E. 29.0'
Mkd: 25" P. Pine S. 15° E. 21.9'

- ⑭ K-2 MS 5320 LS 4790 1988
Fd. Amos & GLO BTs:
31" P. Pine S. 12° E. 16.8'
Pine stump S. 84° E. 16.2'
Set ACAP in amos & mkd:
10" D. Fir S. 42° E. 19.5'
- ⑮ K-3 MS 5320 LS 4790 1988
Fd. 1 1/4" IP no record & GLO BT:
24" B. Oak S. 10° E. 16.8'
Replaced pipe w/ ACAP in amos & mkd:
12" W. Fir S. 14° W. 19.8'
- ⑯ K-4 MS 5320 LS 4790 1988
Fd. wood post & GLO BT: 14" B. Oak S. 24° E. 42.6'
Replaced post w/ ACAP in amos & mkd:
8" D. Fir S. 5° E. 4.4'
9" D. Fir S. 72° E. 8.6'
- ⑰ K-5 MS 5320 LS 4790 1988
Fd. Cedar post.
Replaced w/ ACAP in amos & mkd:
6" B. Oak N. 27° E. 6.6'
9" B. Oak S. 55° E. 5.0'



RECORD of SURVEY
for
USDA - PLUMAS NATIONAL FOREST
of
SECTION 25 and portions of MS 6231 & MS 5320 in
SECTIONS 17, 18, & 20, T. 25N. R. 8E., M.D.M.
in the unincorporated territory of Plumas Co., Calif.



BURGESS
Land Surveys
Redding California

February 1989
Scale as shown
Sheet 2 of 2