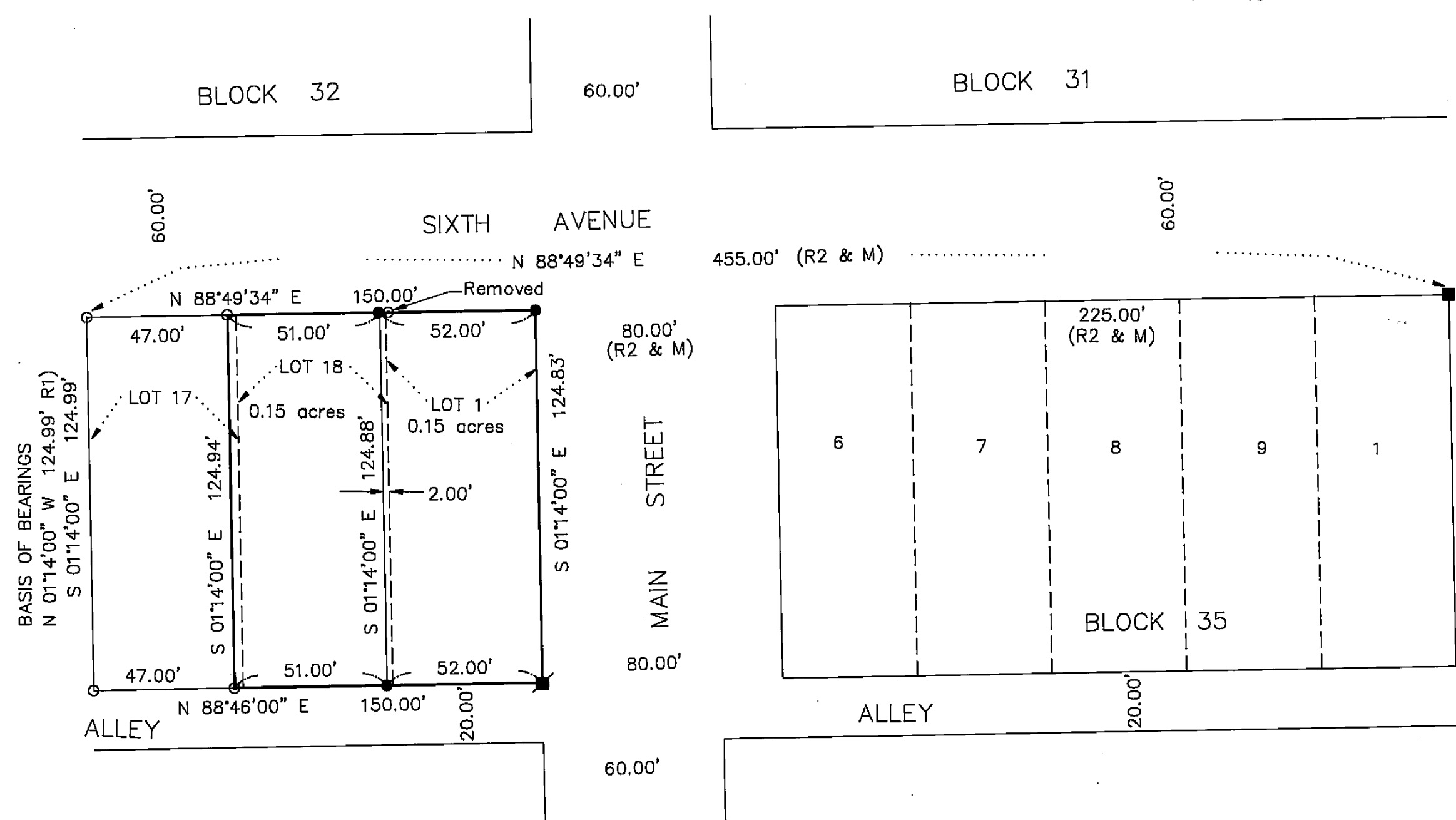
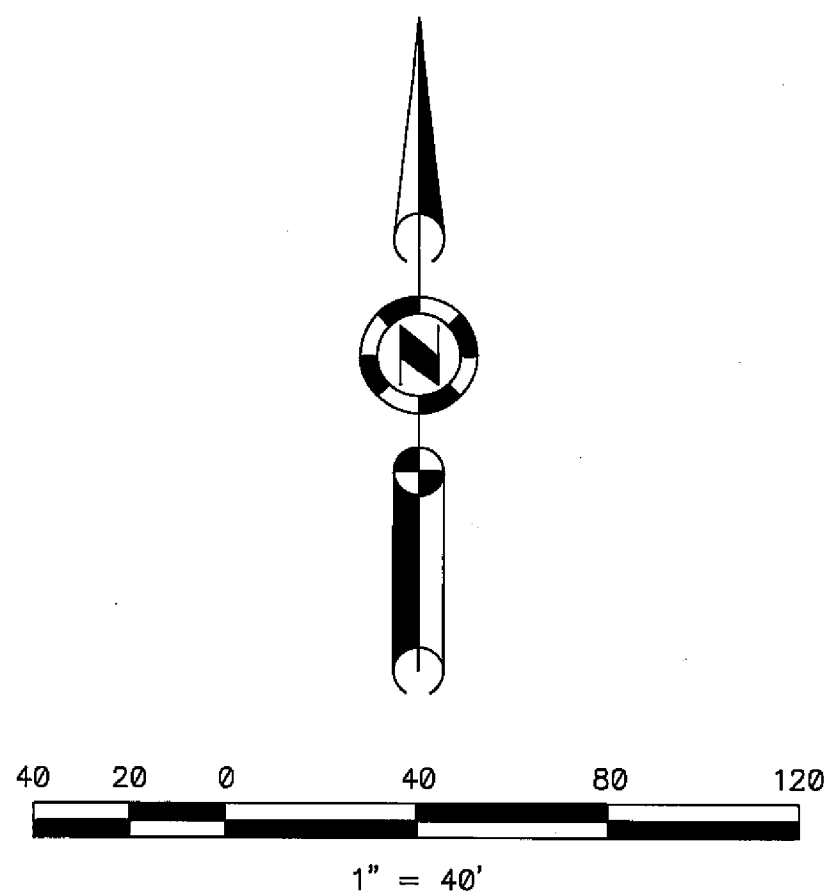


BASIS OF BEARINGS

The basis of bearing is the West line of Lot 17, shown as N 01°14'00" W on 8 RS 12, Plumas County Records.

NOTE: All bearings and distances shown are of record per 8 RS 12 and measured the same unless shown otherwise.



LEGEND

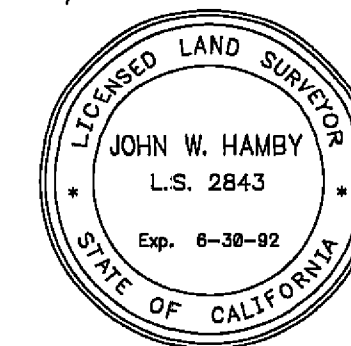
- FOUND 5/8" Rebar & Cap LS 2843
- FOUND 1/2" I.P. LS 3297
- SET 5/8" Rebar & Alum. Cap LS 2843
- SET tag LS 2843 on fence corner

(R1) RECORD per 8 RS 12

(R2) RECORD DISTANCE per ROBERTS LUMBER CO. ADDITION TO PORTOLA

SURVEYOR'S STATEMENT

This map correctly represents a survey made by me or under my direction in conformance with the requirements of the Land Surveyor's Act at the request of Carl & Ala Mae Voigt and Ronald Argall et al in September, 1989.



John W. Hamby
John W. Hamby L.S. 2843

COUNTY SURVEYOR'S STATEMENT

This map has been examined in accordance with Section 8766 of the Land Surveyor's Act this 20th day of November, 1989.

Lawrence J. Brock
Lawrence J. Brock R.C.E. 13528
PLUMAS COUNTY SURVEYOR

COUNTY RECORDER'S STATEMENT

Filed this 20th day of November, 1989 at 9:45 A.M.
in Book 8 of Record of Surveys, at page 109, at the request of the County Engineer.

Fee \$ 500
File No. 8445

Ila Diggs
County Recorder
By *Beck Cammack*
Deputy

NOTE: This map is a result of a Lot Line Adjustment approved October 13, 1989 by the City of Portola.

RECORD OF SURVEY

FOR

Carl & Ala Mae Voigt

and

Ronald Argall et al

LOTS 1 & 18 - BLOCK 36

ROBERTS LUMBER COMPANY ADDITION TO PORTOLA

A portion of Section 1, T. 22 N., R. 13 E., M.D.M.

PLUMAS COUNTY - CALIFORNIA

Scale 1" = 40' October, 1989

HAMBY SURVEYING, INC.
P.O. Box 1209 ph.(916) 832-5571
PORTOLA, CA. 96122