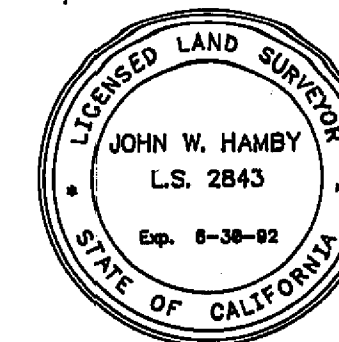


BASIS OF BEARINGS

The basis of bearing of this survey is the Northwesterly line shown as N 67°15'00" E, on 5 RS 85.

SURVEYOR'S STATEMENT

This map correctly represents a survey made by me or under my direction in conformance with the requirements of the Land Surveyor's Act at the request of La Rae Zimmerman in December, 1989.



John W. Hamby
John W. Hamby L.S. 2843

COUNTY SURVEYOR'S STATEMENT

This map has been examined in accordance with Section 8766 of the Land Surveyor's Act this 30TH day of JANUARY, 1990.

Lawrence J. Brook
Lawrence J. Brook R.C.E. 13528
PLUMAS COUNTY SURVEYOR

COUNTY RECORDER'S STATEMENT

Filed this 30TH day of JANUARY, 1990 at 1:25 p.m. in Book 2 of Record of Surveys, at page 116, at the request of the County Engineer.

Fee 5.00
File No. 667

Ila Diggs
County Recorder
By *Bob Cammack*
Deputy

NOTE: This map is a result of a Lot Line Adjustment approved December 18, 1989 by the City of Portola.

RECORD OF SURVEY

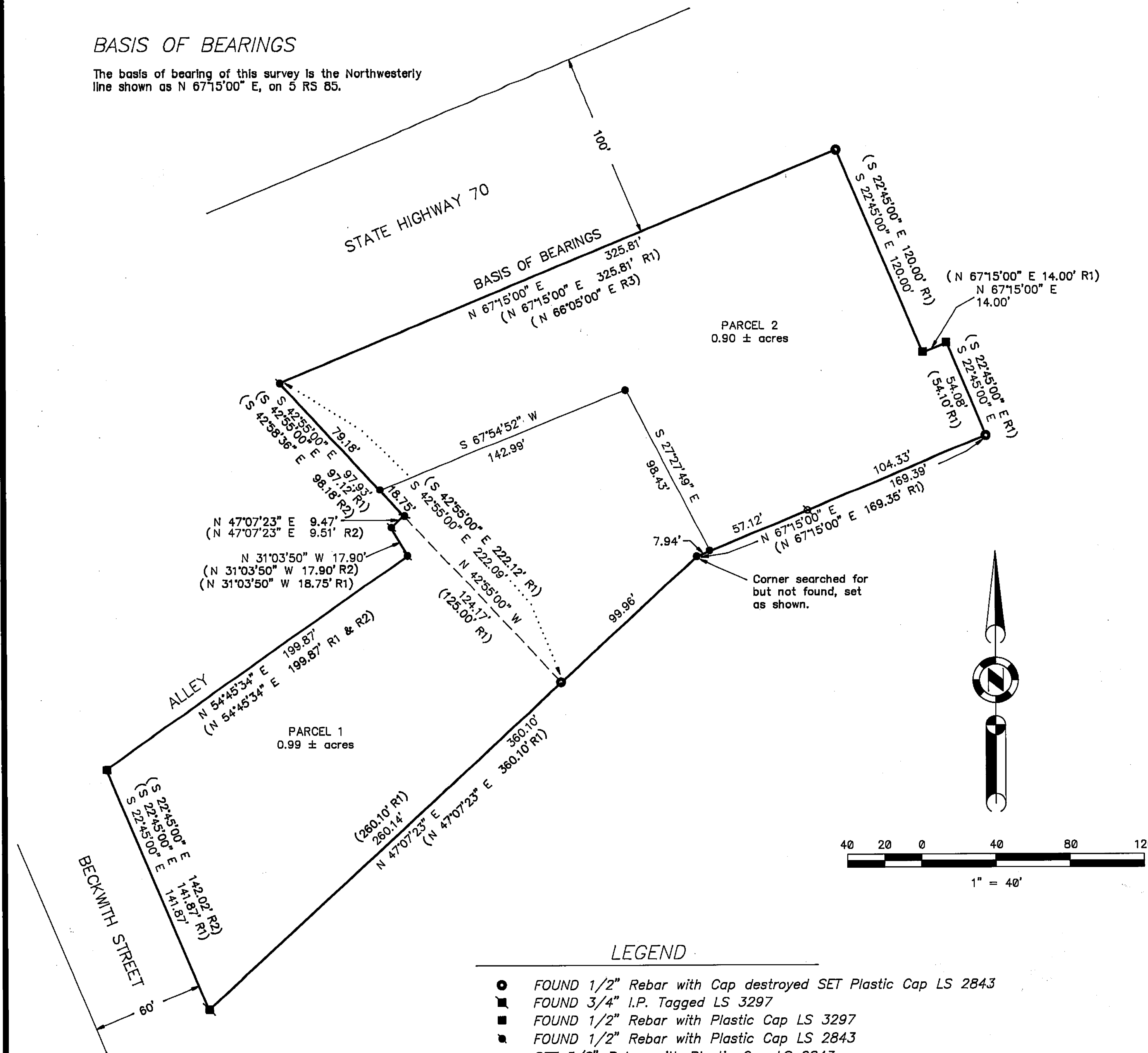
FOR

La Rae Zimmerman

A portion of Section 36, T. 23 N., R. 13 E., M.D.M.
PORTOLA - PLUMAS COUNTY - CALIFORNIA
Scale 1" = 40' December, 1989

HAMBY SURVEYING, INC.
P.O. Box 1209 ph.(916) 832-5571
PORTOLA, CA. 96122

Sheet 1 of 1



LEGEND

- FOUND 1/2" Rebar with Cap destroyed SET Plastic Cap LS 2843
- FOUND 3/4" I.P. Tagged LS 3297
- FOUND 1/2" Rebar with Plastic Cap LS 3297
- FOUND 1/2" Rebar with Plastic Cap LS 2843
- SET 5/8" Rebar with Plastic Cap LS 2843
- FOUND 1/2" Rebar with Aluminum Cap LS 2843
- (R1) RECORD per 5 RS 85
- (R2) RECORD per 7 RS 128
- (R3) RECORD per 8 PM 46