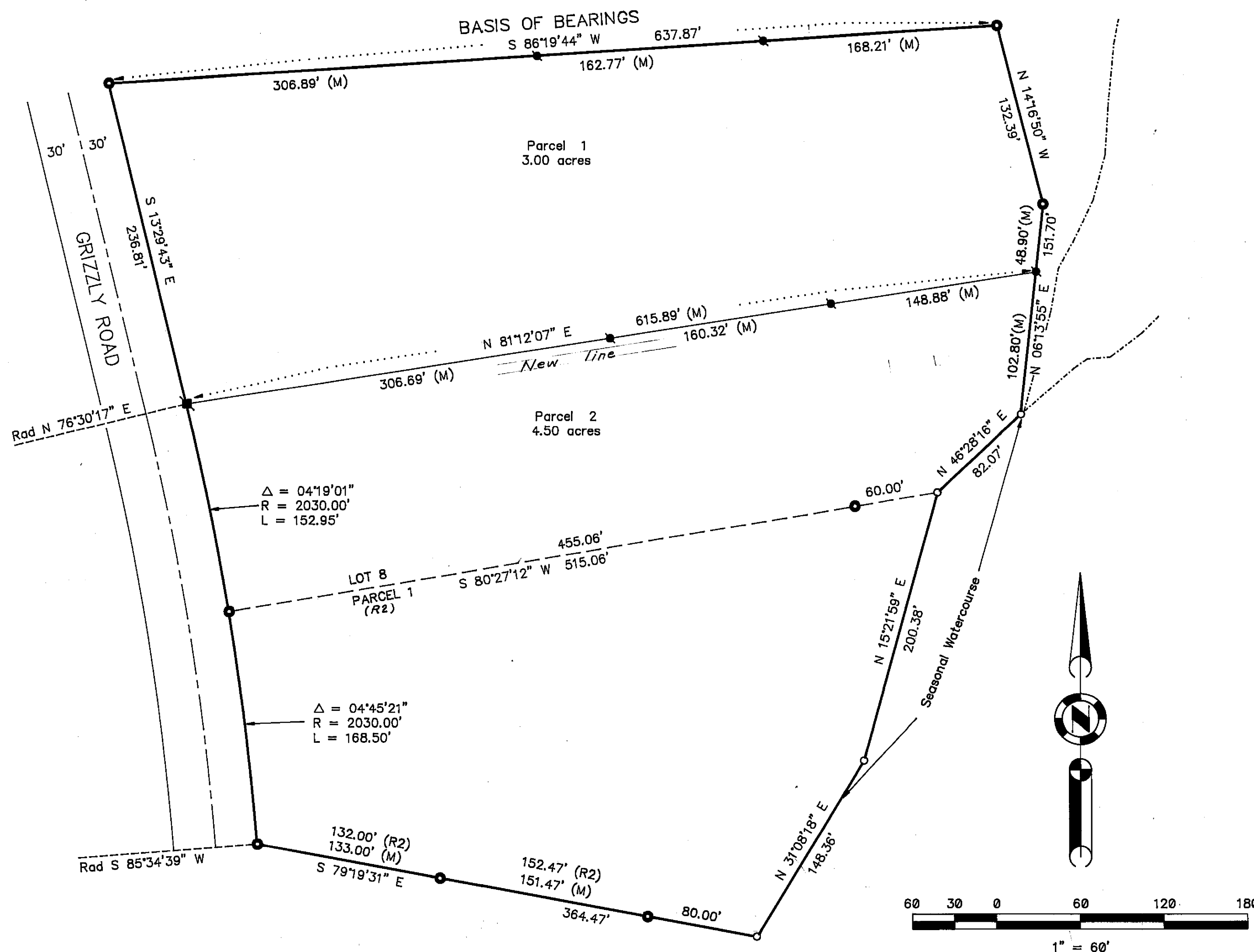
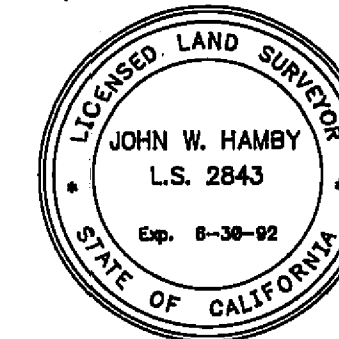


NOTE: All bearings and distances shown are of record per 5 M 143 and 9 PM 55 unless shown otherwise.



### SURVEYOR'S STATEMENT

This map correctly represents a survey made by me or under my direction in conformance with the requirements of the Land Surveyor's Act at the request of Donald and Betty Barrett in October, 1989.



*John W. Hamby*  
John W. Hamby L.S. 2843

### COUNTY SURVEYOR'S STATEMENT

This map has been examined in accordance with Section 8766 of the Land Surveyor's Act this 9th day of February, 1990.

*Lawrence J. Brock*  
Lawrence J. Brock R.C.E. 13528  
PLUMAS COUNTY SURVEYOR

### COUNTY RECORDER'S STATEMENT

Filed this 9th day of February, 1990 at 2:17 P.M. in Book 8 of Record of Surveys, at page 118, at the request of the County Engineer.

Fee \$500  
File No. 878

Ila Diggs  
County Recorder  
By *Rich Ammark*  
Deputy

This map is the result of a lot line adjustment approved by Plumas County recorded in Book 516, Official Records, Page 563.

NOTE: That portion of the Easterly property line shown as seasonal watercourse is the thread of the actual watercourse. The line shown between computed points is only the approximate thread, as shown on 5 M 142 and 9 PM 55.

## RECORD OF SURVEY

FOR  
DONALD & BETTY BARRETT

PARCEL 1 OF 9 PM 55 and  
LOT 8 of RIVER VALLEY SUBDIVISION UNIT 2  
A portion of Sec. 21, T.23 N., R.14 E., M.D.M.  
PLUMAS COUNTY - CALIFORNIA  
Scale 1" = 60' October, 1989

HAMBY SURVEYING INC.  
P.O. Box 1209  
PORTOLA, CA. 96122  
Ph. (916) 832-5571

Sheet 1 of 1