

**NOTE**  
 THE ALIQUOT PART SECTION LINES SHOWN  
 HEREON WERE CALCULATED FROM COMMON  
 TIES TO THE SURVEY OF THE EXTERIOR OF SECTION  
 27 RECORDED IN BOOK 8 OF RECORDS OF  
 SURVEY AT PAGE 39.

FOUND 2 1/2" B. OAK HOLLOW ON WEST SIDE WITH  
 REVERSE SCRIBING ON EASTERN BLAZE "24"  
 VISIBLE (MARKED A 1 1/2" B. OAK - G.L.D.)  
 FROM WHICH BEARS:  
 31" PINE SNAG WITH CLOSED FACE S47°W  
 17.2 FT. (S44°W 24 lks. - G.L.D.)  
 ROTTED PINE STUMP S47°E 52.6 FT.  
 (S45°E 77 lks. - G.L.D.)  
 11" D. FIR WITH CLOSED FACE N40°E 52.1 FT.  
 (N38°E 79 lks. - B.L.M.)  
 17" CEDAR WITH CLOSED FACE N17°W 39.2 FT.  
 (N18°W 59 lks. - B.L.M.)  
 13" S. PINE WITH CLOSED FACE S18°E 36.0 FT.  
 (S18°E 55 lks. - B.L.M.)  
 B.L.M. BRASS CAP IN MOUND OF STONE  
 S47°W 9.0 FT. (S45°W 13 1/2 lks. - B.L.M.)  
 STAMPED AS SHOWN

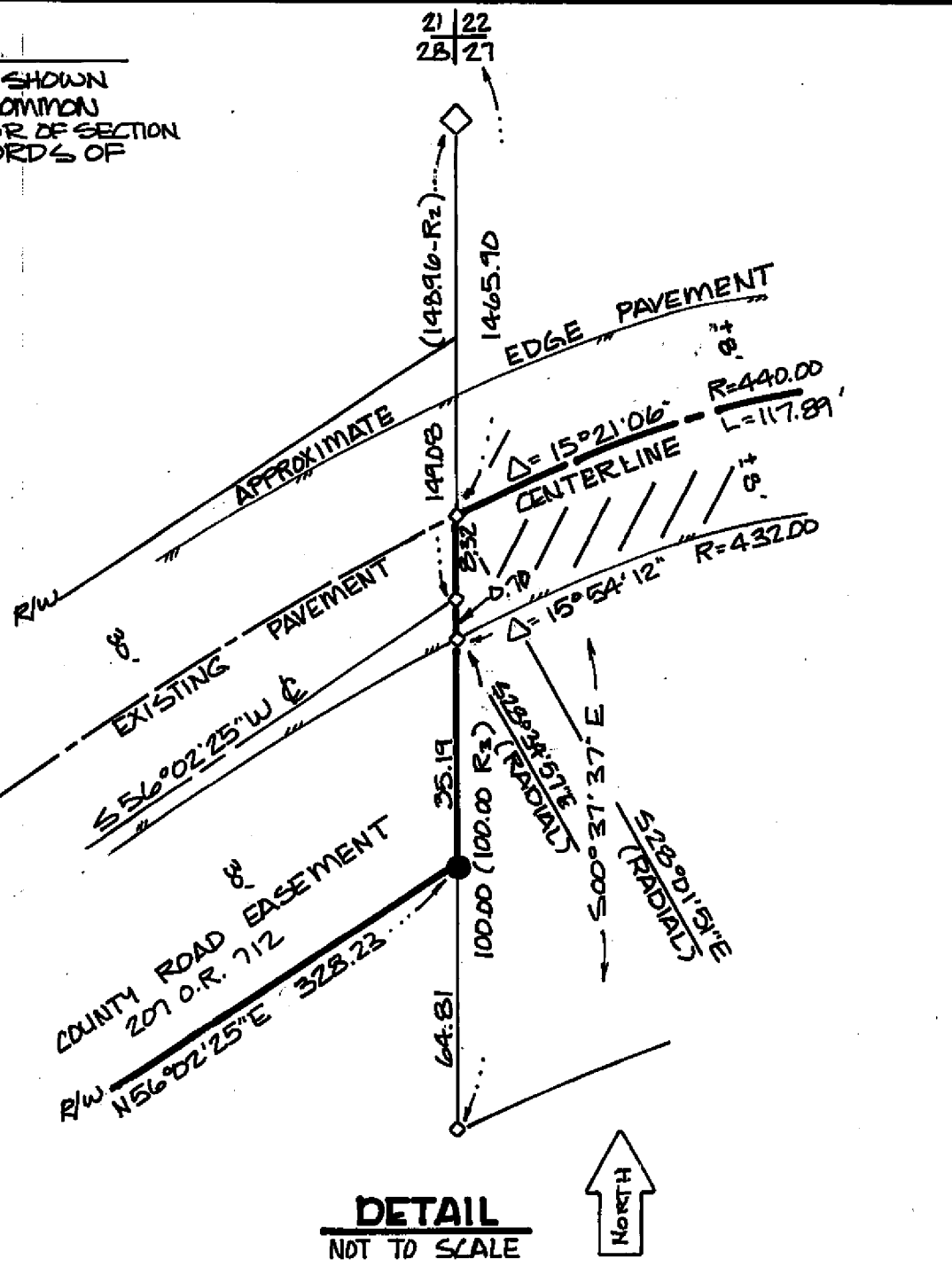
FOUND 1 1/2" D.I.P. "LS 3247"  
 228°W 12' 12" E 0.15 FT.  
 FROM COMPUTED POSITION (R<sub>2</sub>)  
 SEE DETAIL

FOUND 1 1/2" D.I.P. "LS 3247"  
 228°W 12' 12" E 0.15 FT.  
 FROM COMPUTED POSITION (R<sub>2</sub>)  
 SEE DETAIL

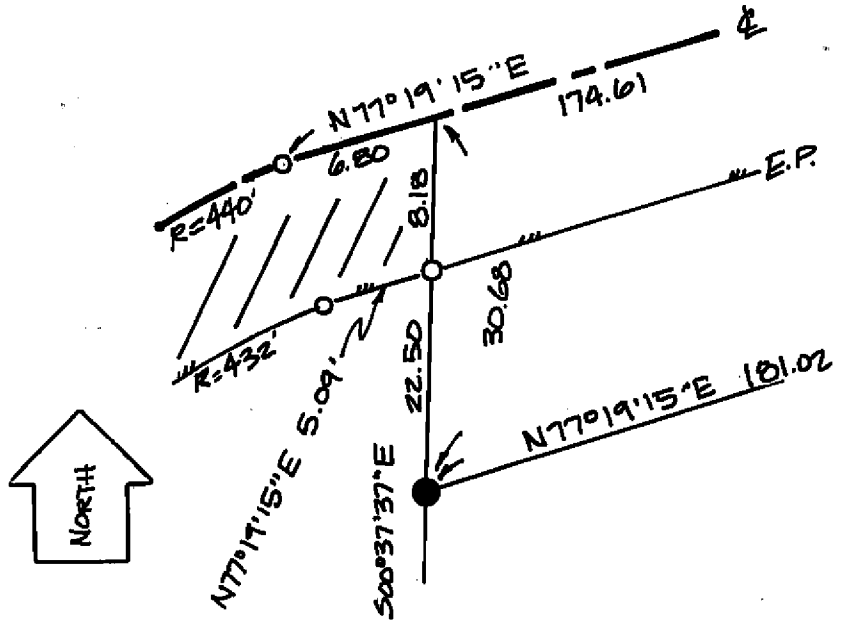
FOUND 3/4" ALUM. CAPPED MONUMENT  
 IN A MOUND OF STONE STAMPED AS SHOWN  
 FROM WHICH BEARS:  
 18" D. FIR S13°4'E 47.1 FT. Mkd. "1/64 BT"  
 (S10°E 47.2 FT., B.R.S. 39)  
 10" D. FIR S76 1/2°E 52.4 FT. Mkd. "1/64 BT"  
 (S73°E 53.4 FT., B.R.S. 39)

**CURVE DATA**

No.	DELTA	RADIUS	ARC
1	20°44'30"	100.00	36.20
2	20°44'30"	70.00	25.34
3	11°50'00"	100.00	20.65
4	11°50'00"	70.00	14.46
5	06°12'04"	430.00	46.54
6	07°08'57"	460.00	57.40



**DETAIL**  
 NOT TO SCALE



**DETAIL 'A'**  
 N.T.S.

- LEGEND**
- FOUND SECTION CORNER AS NOTED
  - FOUND CORNER AS NOTED
  - ◊ SET 1/2" x 24" REBAR WITH 1 1/2" ALUM. CAP STAMPED "M. FILSINGER LS 4976"
  - ◊◊ COMPUTED POINT, NOTHING SET
  - APPROXIMATE EDGE EXISTING PAVEMENT
  - BOUNDARY OF SURVEYED PROPERTY - THIS MAP
  - FENCE LINE
  - (R<sub>1</sub>) RECORD DATA PER 4 P.M. 25
  - (R<sub>2</sub>) RECORD DATA PER 4 R.S. 4
  - (R<sub>3</sub>) RECORD DATA PER 232 O.R. 611

**SURVEYOR'S STATEMENT**

THIS MAP CORRECTLY REPRESENTS A SURVEY MADE BY ME OR UNDER MY DIRECTION IN CONFORMANCE WITH THE REQUIREMENTS OF THE LAND SURVEYORS' ACT AT THE REQUEST OF JEFF ELLERMAYER IN NOVEMBER

Exp. 12-31-99  
 MARK D. FILSINGER  
 LICENSED LAND SURVEYOR  
 No. 4976  
 STATE OF CALIFORNIA

**COUNTY SURVEYOR'S STATEMENT**

THIS MAP HAS BEEN EXAMINED IN ACCORDANCE WITH SECTION 8706 OF THE LAND SURVEYORS' ACT THIS 9TH DAY OF APRIL 1990.

Lawrence Brock  
 LAWRENCE BROCK R.C.E. 13528  
 PLUMAS COUNTY SURVEYOR

**RECORDER'S STATEMENT**

FILED THIS 9TH DAY OF APRIL 1990, AT 3:10 P.M. IN BOOK 8 OF RECORDS OF SURVEY AT PAGE 123 AT THE REQUEST OF THE COUNTY ENGINEER.

FEE 5.00  
 FILE NO. 2068

I LA DIGGS  
 PLUMAS COUNTY RECORDER  
 BY *Barbara Amundson*  
 DEPUTY

**BASIS OF BEARINGS**

SOLAR OBSERVATION BY THE ALTITUDE METHOD AS DESCRIBED UNDER 'BASIS OF BEARINGS' PER 7 R.S. 115. TRAVERSE WORK FOR THIS MAP UTILIZED SAME CONTROL NETWORK AS 7 R.S. 115. SOLAR TAKEN AT POINT WHICH BEARS S31°41'W 820.35 FT. FROM THE NORTHEAST CORNER OF SECTION 27 (LATITUDE = 40°00'22" NORTH).

**RECORD OF SURVEY**

FOR  
 JEFF ELLERMAYER, ET UX  
 AND  
 JOHN + SYDNEY DALREC  
 LOCATED IN THE NORTHWEST QUARTER OF SECTION 27 AND THE NORTHEAST QUARTER OF SECTION 28, TOWNSHIP 28 NORTH, RANGE 9 EAST, MOUNT DIABLO MERIDIAN, PLUMAS COUNTY, CALIFORNIA.

**MARK D. FILSINGER**  
 LAND SURVEYOR

P.O. BOX 4939  
 INCLINE VILLAGE, NV. 89450  
 (702) 832-0246

FEBRUARY 1989

SHEET 1 OF 1