

Basis of Bearings

The Basis of Bearings of this map is based upon a Solar Observation taken at the North 1/4 Corner of Section 14.

North 1/4 corner Section 14
Found Rock Mound and remnants of old 4x4 post per 3 RS 89
Set 5/8" rebar with Aluminum Cap LS 2843

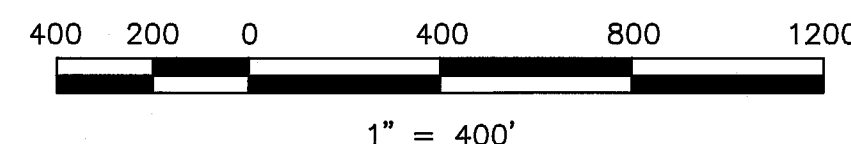
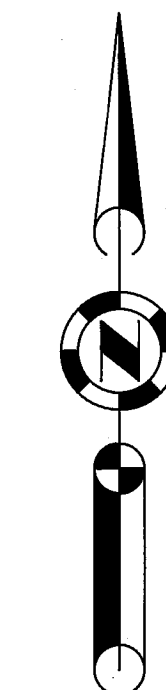
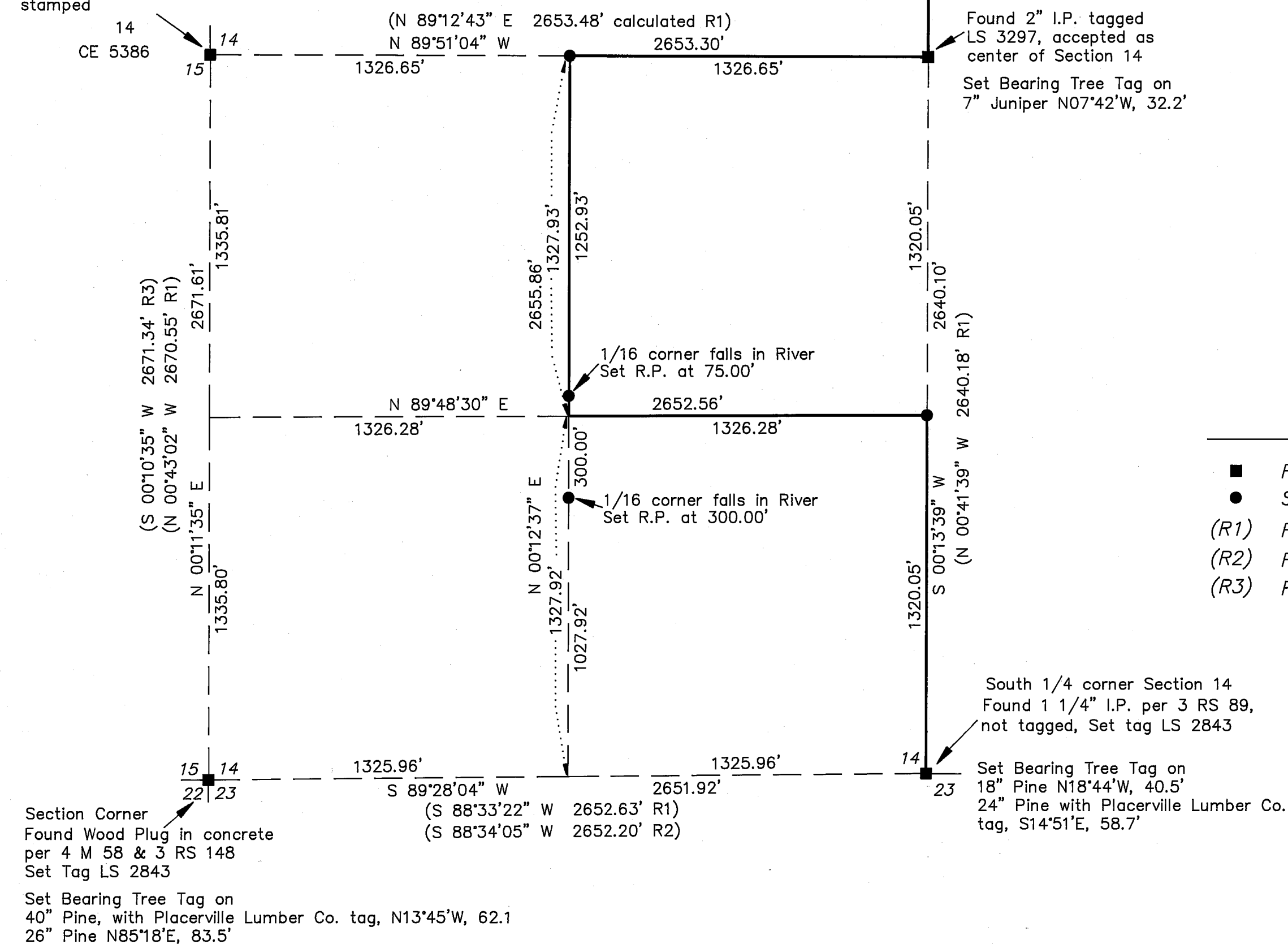
Set Bearing Tree Tag on
12" Fir N56°33'E, 6.8'
10" Pine with K-tag S63°56'E, 15.8'

Note: Found 2" I.P. with disk buried 1' under short 1 1/2" pipe.

Placerville Lumber Co. tag on power pole N21°39'E, 142.7'

Set Bearing Tree Tag on
48" Pine N36°54'W, 202.6'

West 1/4 corner Section 14
Found 2" I.P. with disk stamped

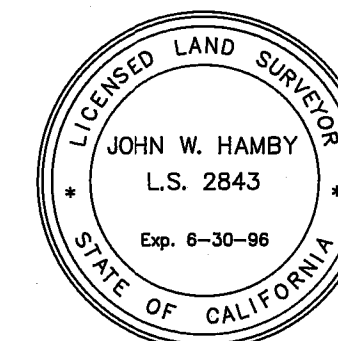


LEGEND

- FOUND point as described
- SET Rebar with Aluminum Cap LS 2843
- (R1) RECORD per 3 RS 89
- (R2) RECORD per 3 RS 148
- (R3) RECORD per 2 RS 119

SURVEYOR'S STATEMENT

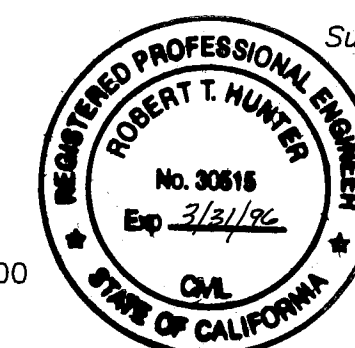
This map correctly represents a survey made by me or under my direction in conformance with the requirements of the Land Surveyors' Act at the request of Harvey West in November, 1993.



John W. Hamby
John W. Hamby LS 2843

COUNTY SURVEYOR'S STATEMENT

This map has been examined in accordance with Section 8766 of the Land Surveyors' Act this 10TH day of December, 1993.



R. Tom Hunter
R. Tom Hunter RCE 30515
PLUMAS COUNTY SURVEYOR
License Expiration Date 3/31/96

RECORDER'S STATEMENT

Filed this 10TH day of DECEMBER, 1993 at 10:05 AM in Book 9 of Record of Surveys, at page 129, at the request of the County Surveyor.

Fee 5.00
File No. 9827

Judith Wells
County Recorder
by *Sue A. Deay*
Deputy

RECORD OF SURVEY for Harvey West

A portion of Section 14
T. 22 N., R. 12 E., M.D.M.
Plumas County ~ California
Scale 1" = 400' November, 1993

Hamby Surveying Inc.
P.O. Box 1209
Portola, CA 96122
(916) 832-5571