

Basis of Bearings

The Basis of Bearings of this map is the East line of the N 1/2 of Section 3 shown as N00°33'30"W on 7 RS 79, Plumas County records.

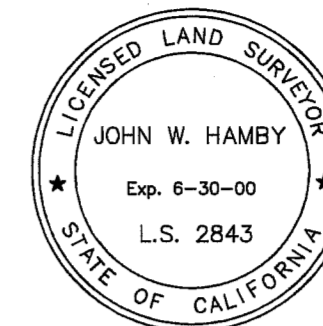
Courses

LINE	DIRECTION	DISTANCE
L1	S69°12'30"E	250.25'
L2	S76°11'52"E	232.40'
L3	S69°24'33"E	304.43'
L4	S77°50'33"E	226.96'
L5	N89°02'44"E	114.78'
L6	S69°23'21"E	206.39'
L7	S89°15'16"E	92.72'
L8	N75°32'50"E	188.68'
L9	N60°44'04"E	144.71'
L10	N79°08'52"E	142.17'
L11	N64°53'38"E	135.18'
L12	N82°35'29"E	237.24'
L13	N63°49'45"E	182.43'

No accessories
Section Corner
Found 3/4" I.P. tagged
LS 2843 per 6 RS 44

SURVEYOR'S STATEMENT

This map correctly represents a survey made by me or under my direction in conformance with the requirements of the Land Surveyors' Act at the request of James G. Mace in October, 1996.



John W. Hamby
John W. Hamby LS 2843

COUNTY SURVEYOR'S STATEMENT

This map has been examined in accordance with Section 8766 of the Land Surveyors' Act this 28TH day of FEBRUARY, 1997



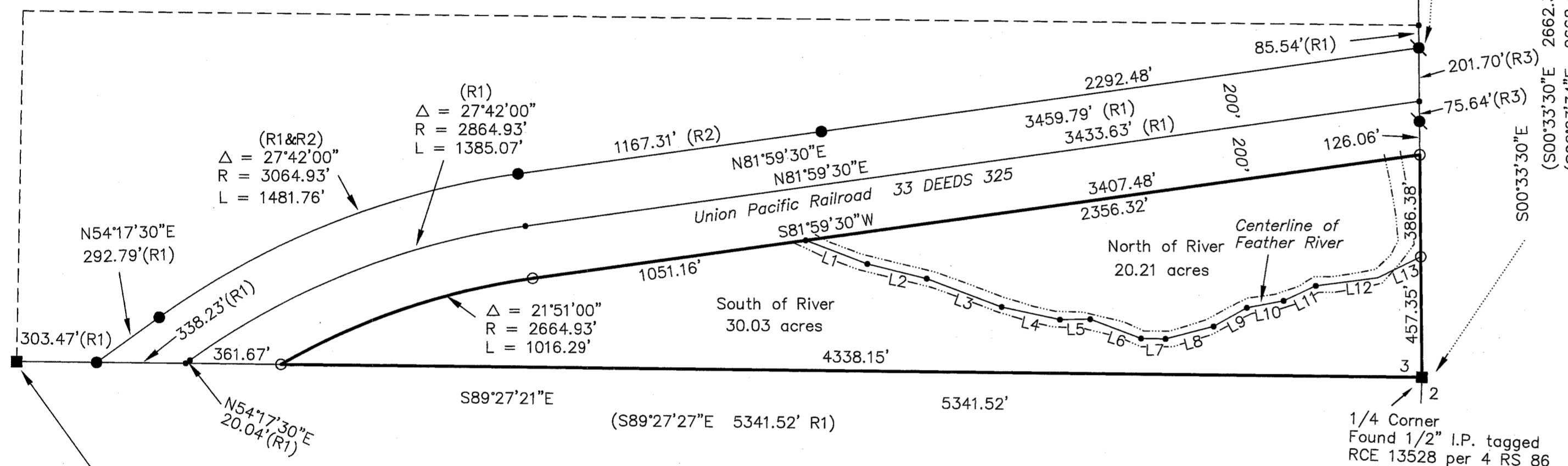
R. Tom Hunter
R. Tom Hunter RCE 30515
PLUMAS COUNTY SURVEYOR
License Expiration Date 3/31/00

RECORDER'S STATEMENT

Filed this 3RD day of MARCH, 1997 at 9:10 a.m. in Book 10 of Record of Surveys, at page 147, at the request of the County Engineer.

Fee 3.00
File No. 1176

Judith Wells
County Recorder
by *Jo Ann Van Halbeek*
Deputy

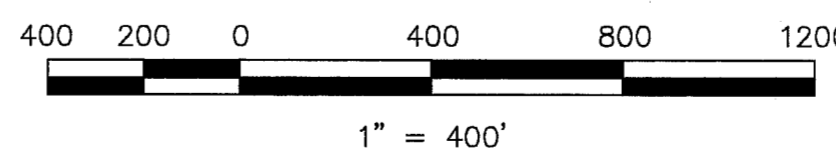


Found BLM Brass Cap "1985"
in mound of stone
28" Pine N70°E, 45.4'
24" Pine N47°E, 15.8'
28" Pine S41°E, 21.8'
20" Pine N78°W, 19.2'

Bearing trees
24" Blazed Pine N56°34'W, 18.8' (20" Pine N57°W, 18.6' R1)
24" Blazed Pine with Old K-tag and tagged RCE 13528 N73°36'E, 17.0'
(20" Pine N74°E, 16.8' R1)

LEGEND

- FOUND point as described
- FOUND 1\2" rebar with Plastic Cap RCE 22836 per (R1)
- SET 5/8" rebar with Aluminum Cap stamped LS 2843
- SET 5/8" rebar with Aluminum Cap stamped LS 2843
- Computed point
- (R1) RECORD per 7 RS 79
- (R2) RECORD per 6 M 37
- (R3) RECORD per 10 RS 44



RECORD OF SURVEY
for
James G. Mace

A portion of the S 1/2 of the N 1/2 of Section 3
T. 22 N., R. 13 E., M.D.M.

Plumas County - California
Scale 1" = 400' October, 1996

HAMBY SURVEYING INC.
P.O. Box 1209
PORTOLA, CA. 96122
Phone 916-832-5571

SHEET 1 OF 1