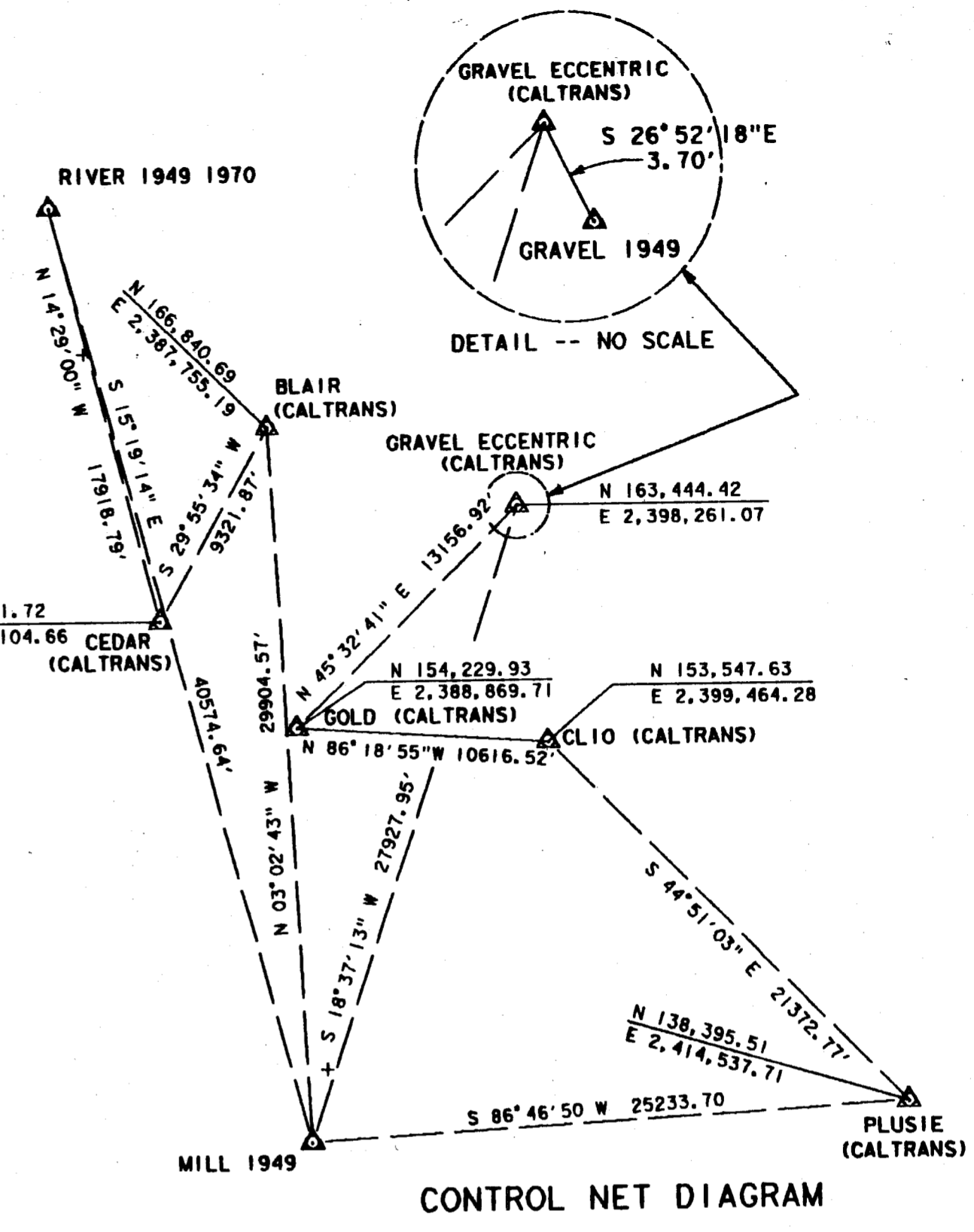
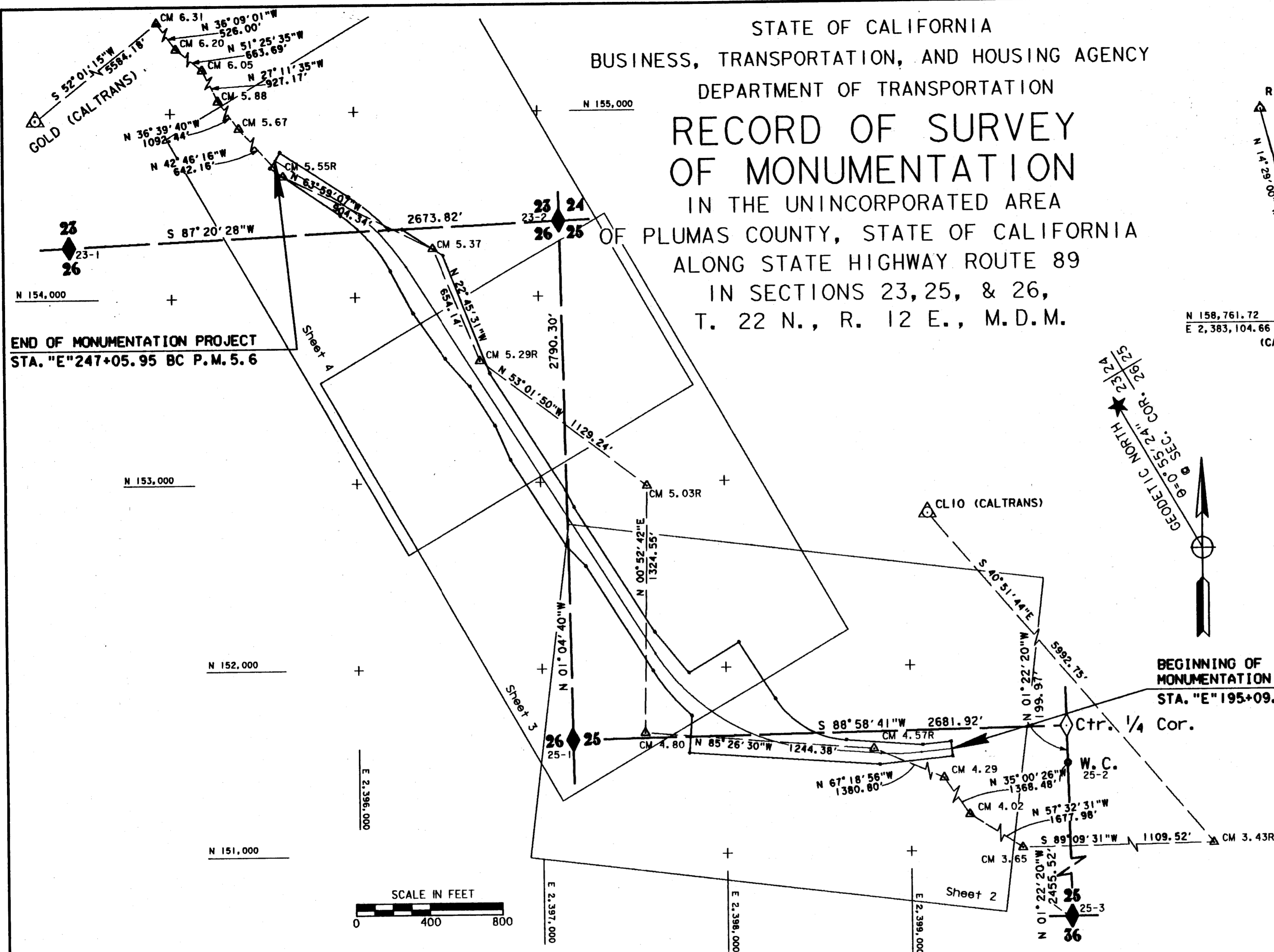


STATE OF CALIFORNIA  
 BUSINESS, TRANSPORTATION, AND HOUSING AGENCY  
 DEPARTMENT OF TRANSPORTATION  
**RECORD OF SURVEY  
 OF MONUMENTATION**  
 IN THE UNINCORPORATED AREA  
 OF PLUMAS COUNTY, STATE OF CALIFORNIA  
 ALONG STATE HIGHWAY ROUTE 89  
 IN SECTIONS 23, 25, & 26,  
 T. 22 N., R. 12 E., M.D.M.



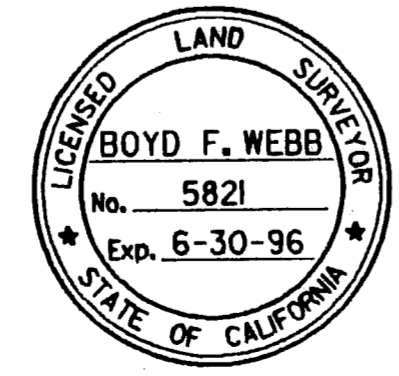
END OF MONUMENTATION PROJECT  
 STA. "E" 247+05.95 BC P.M. 5.6

BEGINNING OF MONUMENTATION PROJECT  
 STA. "E" 195+09.05 POT P.M. 4.5

**SURVEYOR'S STATEMENT**

THIS MAP CORRECTLY REPRESENTS A SURVEY MADE BY ME OR UNDER MY DIRECTION IN CONFORMANCE WITH THE REQUIREMENTS OF THE LAND SURVEYORS' ACT AT THE REQUEST OF DEPARTMENT OF TRANSPORTATION, IN March 1988.

(SIGNED AND SEALED) *Boyd F. Webb*  
 L.S. (OR R.C.E.) NO. 5821  
 License Exp. Date 6-30-96



**COUNTY SURVEYOR'S STATEMENT**

THIS MAP HAS BEEN EXAMINED IN ACCORDANCE WITH SECTION 8766 OF THE LAND SURVEYORS' ACT THIS 20<sup>TH</sup> DAY OF July 1994.

(SIGNED AND SEALED) *R. Tom Hunter*  
 R. TOM HUNTER R.C.E. 30515  
 COUNTY SURVEYOR  
 LICENSE EXPIRES 3/31/96



**RECORDER'S STATEMENT**

FILED THIS 20<sup>TH</sup> DAY OF July, 1994  
 AT 2:25 P.M.  
 IN BOOK 10 OF R.O.S. AT PAGE 15-18  
 AT THE REQUEST OF County Engineer  
*Judith Wells*  
 COUNTY RECORDER

BY *Allison J. Payne*  
 DEPUTY COUNTY RECORDER  
 Fee NA File# 5606 SHEET 1 OF 4