

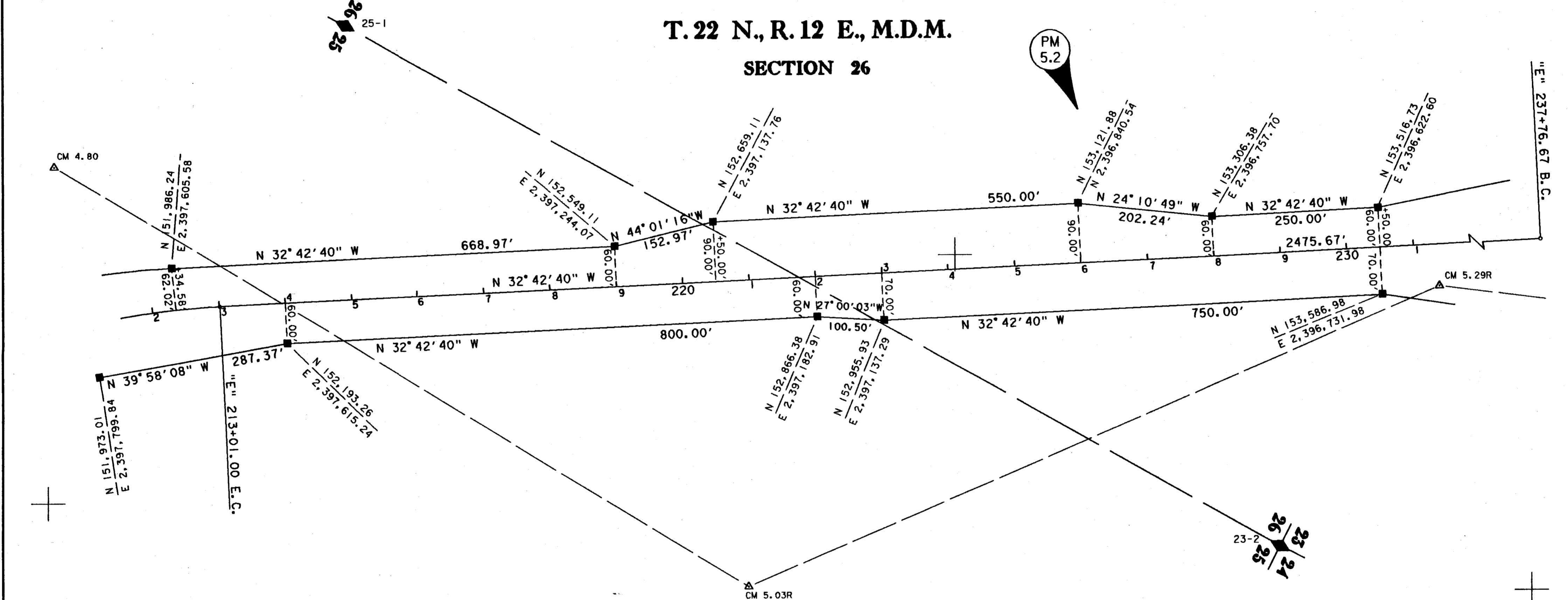
FOUND POINTS

LEGEND

SEC	PT	COORDINATES		DESCRIPTION	RECORDED			SEC	PT	COORDINATES		DESCRIPTION	RECORDED		
		NORTH	EAST		BK	OF	PG			NORTH	EAST		BK	OF	PG
23	2	154,406.24	2,397,115.81	3/4" I.P. L.S. 2846	3	R/S	148								
25	1	151,616.43	2,397,168.30	3/4" I.P. W/PLASTIC CAP RCE 11173 INSIDE 2" I.P. IN M.O.R. 1.0'x0.4' HIGH	3	R/S	123								
--	--	151,651.95	2,397,560.24	CM 4.80	--	--	--								
--	--	152,976.35	2,397,580.55	CM 5.03R	--	--	--								
--	--	153,655.46	2,396,678.34	CM 5.29R	--	--	--								

△	CALTRANS CONTROL LINE MONUMENT	◆	SECTION OR FRACTIONAL CORNER FOUND AS NOTED.
□	FOUND R/W MONUMENT	◇	SECTION OR FRACTIONAL CORNER NOT LOCATED.
■	SET 3/4" REBAR W/ALUM. CAP STAMPED 'CALTRANS'	△	U.S.C. & G.S. TRIANGULATION STATION
○	NO MONUMENT SET	△	CALTRANS HORIZONTAL CONTROL STATION
●	PROPERTY MONUMENT FOUND AS NOTED		
●	PROP. MON. FOUND AS NOTED AND REMOVED		

T. 22 N., R. 12 E., M.D.M.
SECTION 26

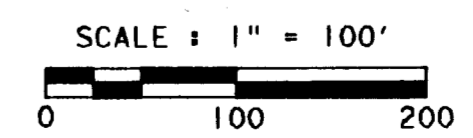
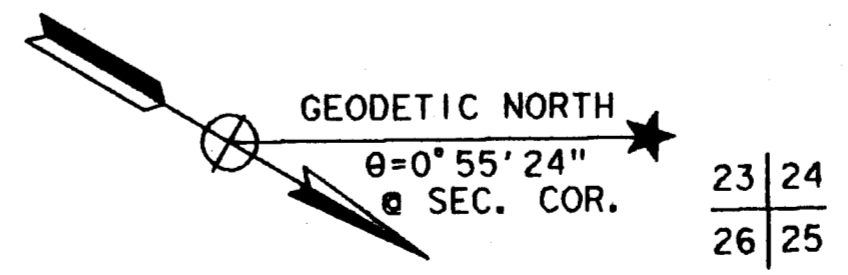


EXCEPTING THOSE SHOWN OTHERWISE, ALL DISTANCES AND BEARINGS ARE GRID, BASED ON THE CALIFORNIA COORDINATE SYSTEM OF 1927, ZONE I. TO OBTAIN GROUND LEVEL DISTANCES, MULTIPLY GRID DISTANCES BY 1.00013592.

GRID WAS ESTABLISHED FROM U.S.C. & G.S. TRIANGULATION STATIONS:

RIVER	N 176,111.06	&	GRAVEL	N 163,441.12
1949	E 2,378,623.21		1949	E 2,398,262.74
MILL	N 136,978.34			
1949	E 2,389,343.83			

SUPPLEMENTARY INFORMATION MAY BE OBTAINED FROM THE DISTRICT SURVEY DEPARTMENT OR RIGHT OF WAY ENGINEERING DEPARTMENT, 2250 BENTON DR., REDDING, CALIFORNIA



STATE OF CALIFORNIA
BUSINESS, TRANSPORTATION, AND HOUSING AGENCY
DEPARTMENT OF TRANSPORTATION
DISTRICT 02
**RECORD OF SURVEY
OF MONUMENTATION**
IN PLUMAS COUNTY
ALONG STATE HIGHWAY ROUTE 89
P.M. 4.5 TO P.M. 5.6
SHEET 3 OF 4