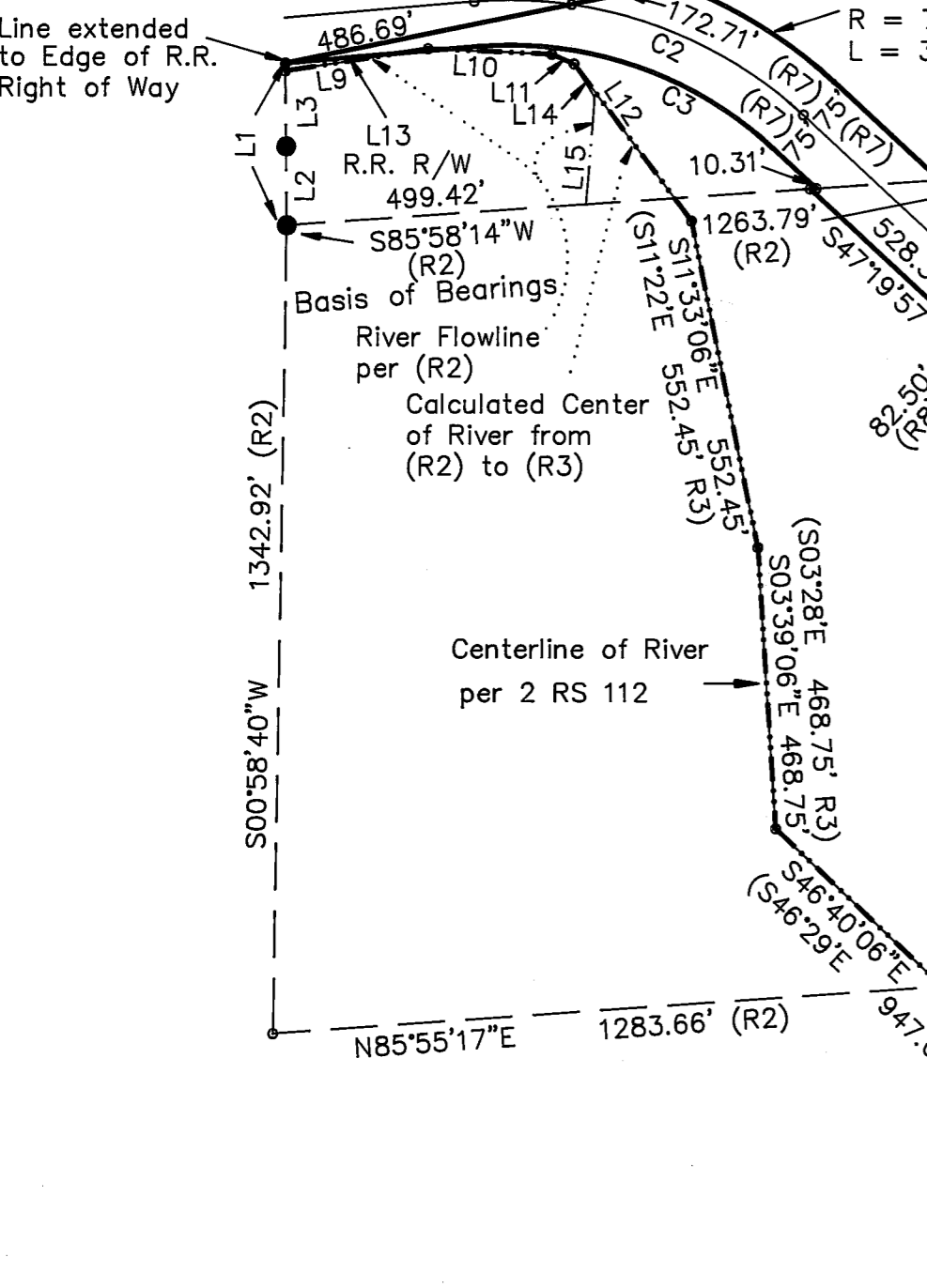


LINE	DIRECTION	DISTANCE	Record
L1	N00°32'35"W	269.04'	N00°32'35"W
L2	N00°32'35"W	130.90'	N00°32'35"W 130.90' (R2)
L3	N00°32'35"W	125.22'	N00°32'35"W 125.22' (R2)
L4	N00°30'06"W	337.83'	N01°19'59"W 337.83' (R1)
L5	N00°30'06"W	56.91'	N01°19'59"W (R1)
L6	N00°30'06"W	242.16'	N01°19'59"W (R1)
L7	S00°30'06"E	38.76'	S01°19'59"E 38.76' (R1)
L8	S01°17'16"E	422.94'	
L9	N81°10'11"E	240.49'	N81°10'11"E 240.49' (R2)
L10	S87°31'57"E	206.03'	S87°31'57"E 206.03' (R2)
L11	S66°42'57"E	40.27'	S66°42'57"E 40.27' (R2)
L12	S36°56'39"E	325.97'	Calculated
L13	N85°04'38"E	322.09'	
L14	S32°29'49"E	64.89'	S32°29'49"E 64.89' (R2)
L15	S4°42'56"W	179.02'	S4°42'56"W 179.02' (R2)

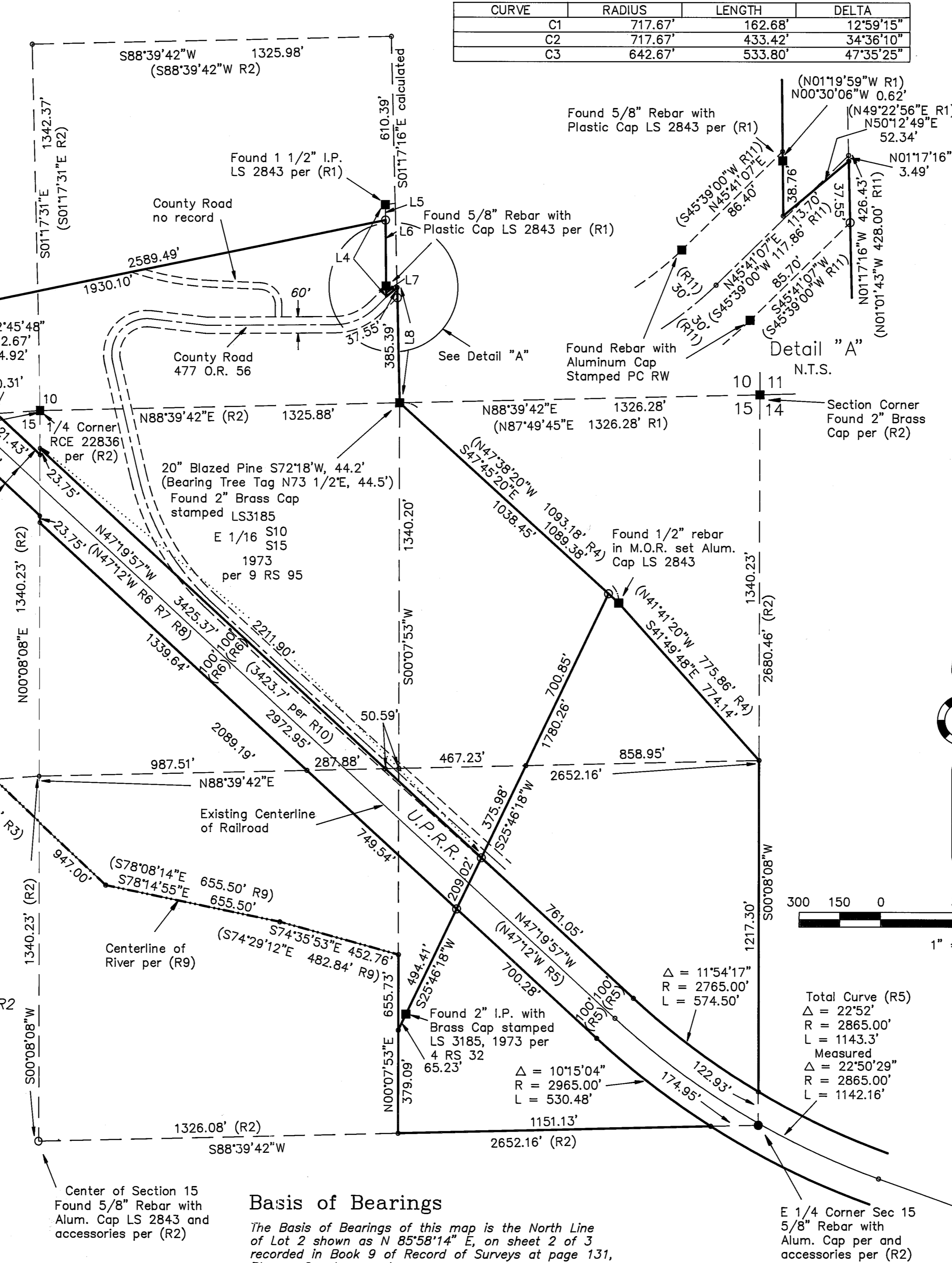
Calculated Total Curve per (R9)
 $\Delta = 47°35'25"$
 $R = 717.67'$
 $L = 596.10'$

$\Delta = 47°41'00"$
 $R = 715.07'$
 $L = 595.10'$



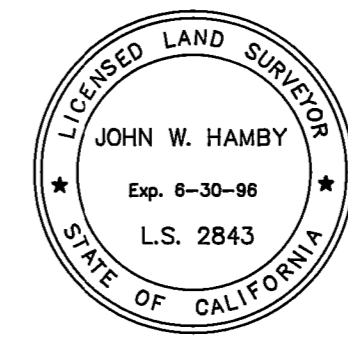
- LEGEND**
- FOUND point as described
 - FOUND Rebar with Aluminum Cap LS 2843 per R2
 - SET Rebar with Plastic Cap LS 2843
 - Computed point
 - (R1) RECORD per 9 RS 95
 - (R2) RECORD per 9 RS 131
 - (R3) RECORD per 2 RS 112
 - (R4) RECORD per 254 OR 140
 - (R5) RECORD per 36 Deeds 505
 - (R6) RECORD per 36 Deeds 233
 - (R7) RECORD per 39 Deeds 352
 - (R8) RECORD per 56 Deeds 208
 - (R9) RECORD per 5 M 24
 - (R10) RECORD per Railroad Plans
 - (R11) RECORD per 477 O.R. 56

CURVE	RADIUS	LENGTH	DELTA
C1	717.67'	162.68'	12°59'15"
C2	717.67'	433.42'	34°36'10"
C3	642.67'	533.80'	47°35'25"



SURVEYOR'S STATEMENT

This map correctly represents a survey made by me or under my direction in conformance with the requirements of the Land Surveyors' Act at the request of Sierra Pacific Industries in May, 1994.



John W. Hamby
 John W. Hamby LS 2843

COUNTY SURVEYOR'S STATEMENT

This map has been examined in accordance with Section 8766 of the Land Surveyors' Act this 11th day of August, 1994.

R. Tom Hunter
 R. Tom Hunter RCE 30515
 PLUMAS COUNTY SURVEYOR
 License Expiration Date 3/31/96

RECORDER'S STATEMENT

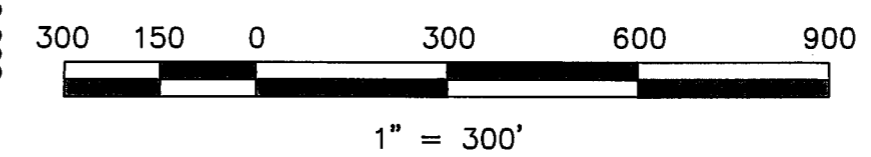
Filed this 12th day of August, 1994 at 9:45 A.M. in Book 10 of Record of Surveys, at page 21, at the request of the County Surveyor.

Fee \$8.00
 File No. 6273

Judith Wells
 County Recorder
 by *Jo Ann Van Melder*
 Deputy



Note:
 This Record of Survey was prepared to reflect a Lot Line Adjustment for which a resolution is Recorded in Book 632 of Official Records at page 646.



RECORD OF SURVEY for Sierra Pacific Industries

A portion Sections 10 & 15
 T. 23 N., R. 11 E., M.D.M.
 Plumas County ~ California
 Scale 1" = 300' ~ May, 1994

HAMBY SURVEYING INC.
 P.O. Box 1209
 PORTOLA, CA. 96122
 Phone 916-832-5571