

NORTH ARROW



SCALE

1 INCH = 800 FEET



BASIS OF BEARING

MEASURED BEARINGS AND DISTANCES ARE GRID. THEY ARE BASED ON THE CALIFORNIA COORDINATE SYSTEM OF 1983(CCS83), ZONE 1.

θ AT SW CORNER OF SECTION 2 IS 00°50'09". MULTIPLY GRID DISTANCES BY 1.000193 TO GET GROUND DISTANCES.

CONTROL WAS DONE WITH GPS, TRIMBLE NAVIGATION, 4000 ST, SINGLE FREQUENCY RECEIVERS. CONTROL WAS BROUGHT IN FROM "QUINCY 7221 NCMN" STATION USING THE FOLLOWING INFORMATION:

LATITUDE: 39°58'28.37468" N 1875796.225 N
LONGITUDE: 120°56'39.88049" W 6857508.130 E

AS PUBLISHED BY NATIONAL GEODETIC SURVEYS (NGS) IN FEBRUARY 1987.

SURVEY HISTORY

R1	R.WILSON	JUN 1877	GLO
R2	A.SMITH	AUG 1880	GLO
R3	W.MINTO	DEC 1880	GLO
R4	A.KEDDIE	DEC 1900	GLO
R5	A.KEDDIE	SEP 1920	GLO
R6	E.RINGEL	NOV 1963	2RS116
R7	R.MILLER	JUN 1983	UNRECORDED
R8	C.BROWN	JAN 1987	7RS107

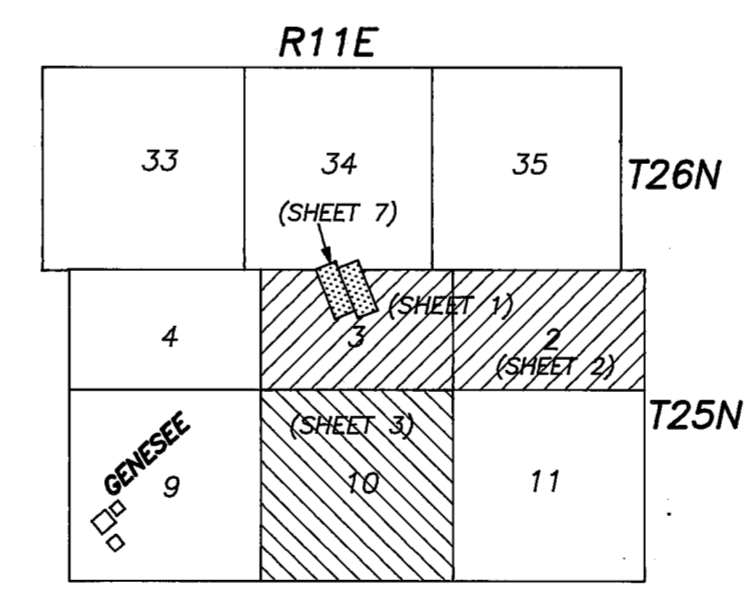
GENERAL NOTES

IN SEPTEMBER 1984 R.C. MILLER, RCE 15816, SUBMITTED A PRELIMINARY RECORD OF SURVEY TO PLUMAS COUNTY. THE FINAL RECORD OF SURVEY WAS NEVER RECORDED. ALL MONUMENTS SHOWN ON PRELIMINARY MAP (SHEET 2) WERE ACCEPTED AS BEING IN THE CORRECT LOCATION.

A STANDARD MILLER MONUMENT IS A 1/2" DIAMETER REBAR WITH A YELLOW PLASTIC CAP EMBOSSED WITH THE LOGO "R.C. MILLER RCE 15816".

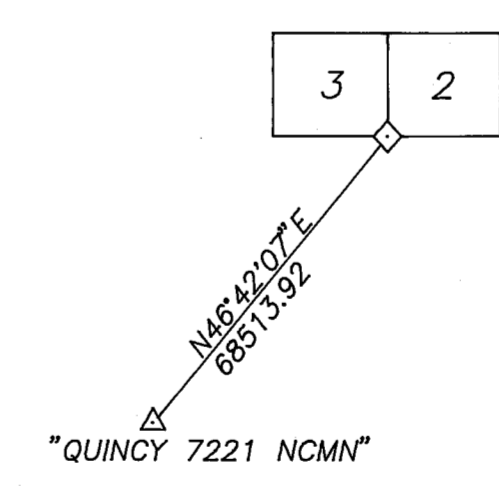
A STANDARD UNITED STATES FOREST SERVICE (USFS) DRIVE-IN MONUMENT IS A 5/8" DIAMETER ALUMINUM ROD WITH A 3-1/4" DIAMETER ALUMINUM CAP EMBOSSED WITH THE USFS LOGO.

PROJECT LOCATION



CONTROL SCHEME

NOT TO SCALE



LEGEND

- ◆ FOUND CORNER
- ◇ SET CORNER
- PROPERTY BOUNDARY MARKED AND POSTED
- ▲ FOUND STANDARD CORNER
- ▼ FOUND CLOSING CORNER
- ▽ SET CLOSING CORNER



SURVEYOR'S STATEMENT

This map correctly represents a survey made by me or under my direction in conformance with the requirements of the Land Surveyors' Act at the request of Plumas National Forest in NOVEMBER, 1994.

William G. Snow
William Glenn Snow L.S. 5623
License Exp. Date 12/31/94

COUNTY SURVEYOR'S STATEMENT

This map has been examined in accordance with Section 8766 of the Land Surveyors' Act this 15th day of December, 1994.

R. Tom Hunter
R. Tom Hunter R.C.E. 30515
Plumas County Surveyor
License Exp. Date 03/31/96

RECORDER'S STATEMENT

Filed this 15th day of December, 1994 at 11:26 A.m. in Book 10 of Records of Surveys, at page 32-38, at the request of the County Surveyor.

Fee: \$ 20.00
File No: 9345

Judith Wells
County Recorder
By: *Julian L. Payne*
Deputy

RECORD OF SURVEY

LOCATED IN SECTIONS 2,3,4,9,&10 T25N R11E MDB&M AND SECTIONS 34 & 35 T26N R11E MDB&M
AT THE REQUEST OF PLUMAS NATIONAL FOREST
PO BOX 11500 QUINCY CALIFORNIA 95971

SURVEY CREW R.KNOETTGEN T.VELIOTES M.BEVLEY
D.HOBBS A.GREEN L.CRIPPA

DRAWN BY R.KNOETTGEN & S.SASSER SHEET: 1 OF 7