

32
 RECORD: A 3"x3"x48" OAK POST IN AN 18" HIGH STONE MOUND
 (GLO) FWB:
 R3 14" BO N12°15'E 28 LKS
 FOUND: STD MILLER MON 6" AG IN A 36"x36"x6" IMBEDDED MOS
 FWB:
 17" BO N70°00'W 22 FT OPEN FACE NO SCRIBING
 VISIBLE. 1969 BT TAG ON READS "S70°W 33 LKS
 16" PP N07°W 22 FT 1948 KTAG READS " 1/4 S35
 IS S07°E 33 LKS"
 SET: NOTHING AT CORNER LOCATION
 FWB:
 10" PP N50°04'E 6.5 FT SCRIBED "1/4S35BT"
 11" PP N23°10'W 15.5 FT SCRIBED "1/4S35BT"

33
 RECORD: POST IN A MOS
 (GLO) FWB:
 R1 36" PP S70°00'W 172 LKS
 45" PP S18°15'E 131 LKS
 45" PP N73°30'E 207 LKS
 FOUND: STD MILLER MON 4" BELOW GROUND
 FWB:
 45" DIA 6' TALL SNAG S19°06'E 109.8 FT (166 LKS)
 SET: 24"x24"x8" MOS AROUND FOUND STD MILLER MON
 FWB:
 23" IC N73°00'E 17.6 FT SCRIBED "T25NR11ES1BT"
 37" IC S62°37'E 30.7 FT SCRIBED "T25NR11ES12BT"

34
 RECORD: 22" RED FIR
 (GLO) FWB:
 R3 13" FIR N68°E 16 LKS
 8" FIR N70°W 18 LKS
 FOUND: 35" DF W/CLOSED FACE ON NORTH SIDE AND 1965 KTAG
 BY BUCKHOUSE & AHRENHOLTZ "THIS IS 1/4 COR"
 FWB:
 15" DF W/CLOSED FACE
 60" DF SNAG 10 FT TALL VERY BADLY DECAYED
 SET: STD USFS DRIVE-IN MON
 3" AG IN A 12"x12"x3" MOS AS A REFERENCE MONUMENT

35
 RECORD: NOTHING SET
 (GLO)
 FOUND: STD MILLER MON 4" AG
 SET: NOTHING

38
 RECORD: POST
 (GLO) FWB:
 R1 6" COTTONWOOD S46°W 87 LKS
 12" COTTONWOOD N05°E 106 LKS
 FOUND: NOTHING
 SET: NOTHING CALCULATED POSITION ONLY

39
 RECORD: NOTHING SET
 (GLO)
 FOUND: NOTHING AT CORNER POSITION
 FWB:
 1/2" REBAR NO CAP POSSIBLE MILLER
 20 FT EASTERLY OF CALCULATED POSITION
 SET: NOTHING

40
 RECORD: NOTHING SET
 (GLO)
 FOUND: STD MILLER MON 4' AG
 SET: NOTHING

41
 RECORD: POST IN MOUND WITH PIT HOLES
 (GLO) R1
 FOUND: NOTHING
 SET: NOTHING

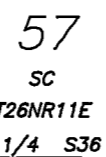
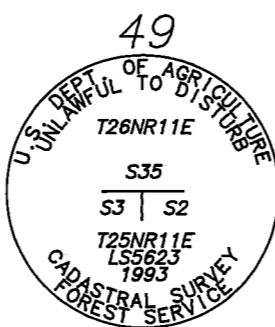
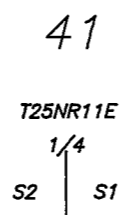
49
 RECORD: 8"x12"x30" STONE IN A STONE MOUND
 (GLO) R1
 FOUND: STD MILLER MON 4" AG ACCEPTED AS A PERPETUATION OF
 THE ORIGINAL 1880 CLOSING CORNER
 SET: STD USFS DRIVE-IN MON W/36" OF ROD 0" AG IN A
 24"x24"x4" MOS AT THE TRUE POINT OF INTERSECTION
 FWB:
 THE FOUND MILLER MON N01°40'22"W 2.74 FT
 28" PP N48°04'W 45.6 FT SCRIBED "T26NR11ES35CCBT"
 16" IC N36°04'E 11.8 FT SCRIBED "T26NR11ES35CCBT"
 10" PP S41°12'E 36.8 FT SCRIBED "T25NR11ES2CCBT"
 09" PP S26°23'E 58.7 FT SCRIBED "T25NR11ES3CCBT"
 SEE DETAIL "A"

50
 RECORD: PINE POST
 (GLO) FWB:
 R1 15" IC S15°30'E 58 LKS
 25" PINE S53°W 46 LKS
 8" BO N60°W 91 LKS
 FOUND: STD USFS MON 8" AG IN A 24"x24"x8" MOS (9RS145)
 FWB:
 22" IC S18°26'E 37.7 FT (57 LKS) CLOSED FACE
 31" PP S54°55'W 27.3 FT (41 LKS) CLOSED FACE
 16" BO N54°30'W 59.7 FT (90 LKS) CLOSED FACE
 SET: NOTHING

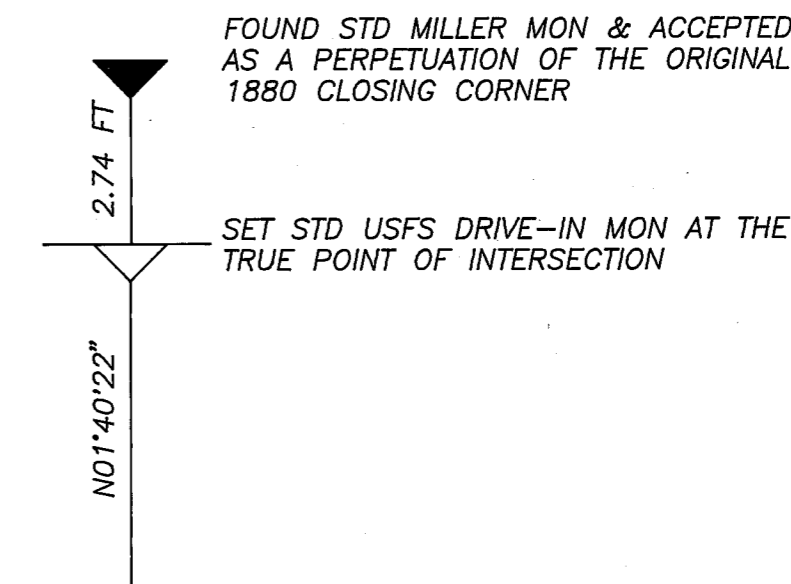
57
 RECORD: POST
 (GLO) FWB:
 R3 10" COTTONWOOD N79°30'W 8 LKS
 12" COTTONWOOD S19°30'W 180 LKS
 FOUND: NOTHING
 SET: NOTHING

58
 RECORD: 8"x12"x30" STONE IN AN MOS
 (GLO) FWB:
 R1 20" PP S56°W 130 LKS

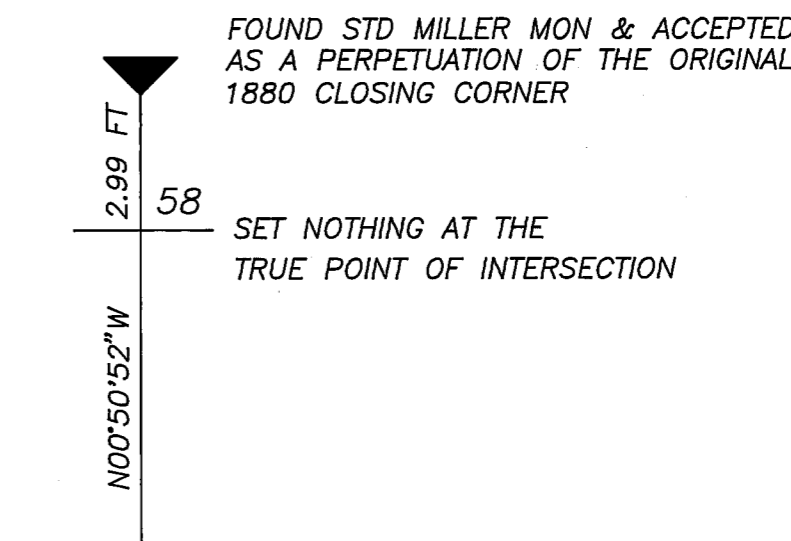
FOUND: STD MILLER MON 4" AG NO MOS
 FWB:
 62" PP S54°11'W 89.8 FT (136 LKS) OPENED
 FAINT UNREADABLE SCRIBING VISIBLE
 SET: NOTHING AT THE TRUE POINT OF INTERSECTION
 FWB:
 THE FOUND STD MILLER MON N00°50'52"W 2.99 FT
 SEE DETAIL "B"



DETAIL "A"



DETAIL "B"



NON STANDARD ABBREVIATIONS

FWB	FROM WHICH BEARS
BT	BEARING TREE
MOS	MOUND OF STONE
GLO	GOVERNMENT LAND OFFICE
AG	ABOVE GROUND
DF	DOUGLAS FIR
WF	WHITE FIR
RF	RED FIR
PP	PONDEROSA PINE
KTAG	LOCATION POSTER
IC	INCENSE CEDAR
MON	MONUMENT

RECORD OF SURVEY

LOCATED IN SECTIONS 2,3,4,9,&10 T25N R11E MDB&M
 AND SECTIONS 34 & 35 T26N R11E MDB&M
 AT THE REQUEST OF PLUMAS NATIONAL FOREST
 PO BOX 11500 QUINCY CALIFORNIA 95971

CREW:
 R.KNOETTGEN T.VELJOTES M.BEVLEY DRAWN BY:
 D.HOBBS A.GREEN L.CRIPPA R.KNOETTGEN
 S.SASSER