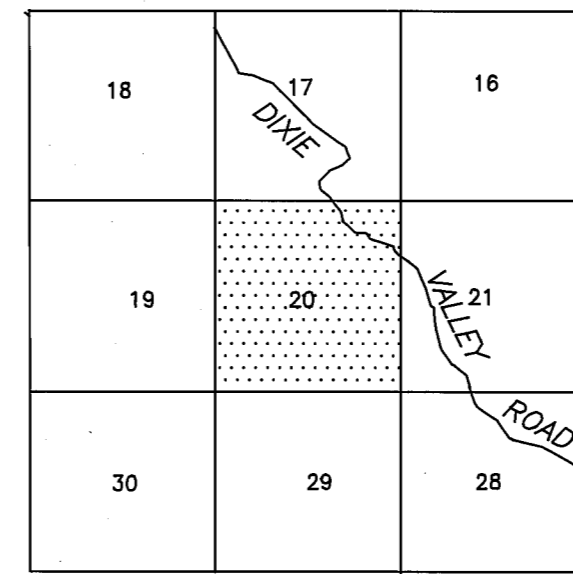


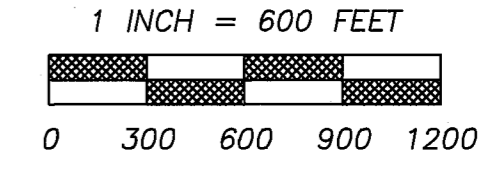
**PROJECT LOCATION**  
T24N R15E MDM



**NORTH ARROW**



**SCALE**



**SURVEY HISTORY**

R1	A. SMITH	AUG 1874	GLO
R2	B. JEFFRIES	JUN 1972	4M5-13
R3	J. HAMBY	SEP 1985	9PM34

**BASIS OF BEARING**

MEASURED BEARINGS AND DISTANCES ARE GRID. THEY ARE BASED ON THE CALIFORNIA COORDINATE SYSTEM OF 1983(CCS83), ZONE 1.

θ AT THE N1/16 S20/S21 IS 01°06'06". MULTIPLY GRID DISTANCES BY 1.000265 TO GET GROUND DISTANCES.

CONTROL WAS DONE WITH GPS, TRIMBLE NAVIGATION, 4000 ST, SINGLE FREQUENCY RECEIVERS. CONTROL WAS BROUGHT IN USING THE FOLLOWING STATIONS:

"HAWLEY"  
LATITUDE: 39°49'05.39416" N 1821278.349 N  
LONGITUDE: 120°22'29.81585" W 7018148.208 E

"D 143"  
LATITUDE: 39°48'33.80081" N 1818841.536 N  
LONGITUDE: 120°14'06.57956" W 7057474.307 E

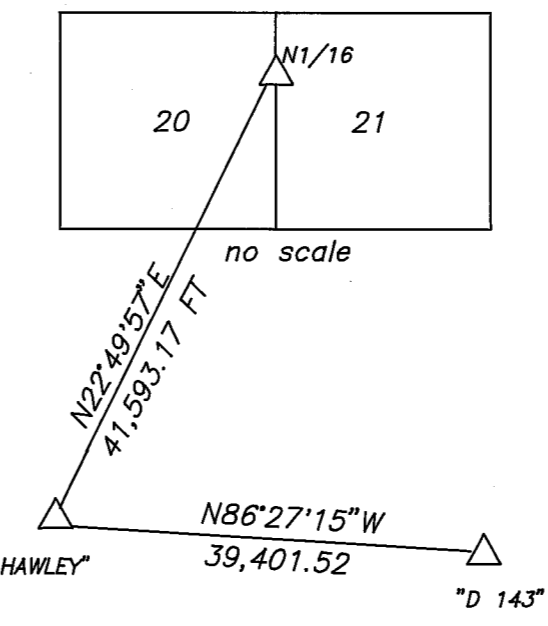
AS PUBLISHED BY NATIONAL GEODETIC SURVEYS (NGS) IN FEBRUARY 1987.

**GENERAL NOTES**

A STANDARD UNITED STATES FOREST SERVICE (USFS) DRIVE-IN MONUMENT IS A 5/8" DIAMETER ALUMINUM ROD WITH A 3-1/4" ALUMINUM CAP EMBOSSED WITH THE USFS LOGO.

BEARINGS TO CORNER ACCESSORIES ARE GEODETIC  
ACREAGES WERE CALCULATED USING GROUND DISTANCES

**CONTROL SCHEME**



**CALIFORNIA COORDINATE SYSTEM OF 1983(CCS83), ZONE 1**

CORNER	NORTHING	EASTING
1	1860946.729	7028895.908
3	1860947.868	7031580.638
5	1860949.007	7034264.689
7	1858275.887	7034311.064
9	1855602.767	7034357.439
10	1855592.840	7031701.985
11	1855582.912	7029046.528
12	1858264.820	7028971.218
20	1855371.208	7023905.300
21	1844855.279	7029044.952



**SURVEYOR'S STATEMENT**

This map correctly represents a survey made by me or under my direction in conformance with the requirements of the Land Surveyors' Act at the request of Plumas National Forest in March 24, 1995.  
*William Glenn Snow*  
William Glenn Snow L.S. 5623  
License Exp. Date 12/31/98

**COUNTY SURVEYOR'S STATEMENT**

This map has been examined in accordance with Section 8766 of the Land Surveyors' Act this 28th day of March, 1995.  
*R. Tom Hunter*  
R. Tom Hunter R.C.E. 30515  
Plumas County Surveyor  
License Exp. Date 03/31/96

**RECORDER'S STATEMENT**

Filed this 30th day of March, 1995 at 1:58 P.m. in Book 10 of Records of Surveys, at page 55-57, at the request of the County Surveyor.  
Fee: \$12.00  
File No: 1762  
Judith Wells  
County Recorder  
By: *Joe A. Osay*  
Deputy

**RECORD OF SURVEY**

LOCATED IN SECTION 20 T24N R15E MDM  
PLUMAS COUNTY, CALIFORNIA  
FOR  
**PLUMAS NATIONAL FOREST**  
PO BOX 11500 QUINCY, CALIFORNIA 95971  
CREW: D.HOBBS, R.KNOETTGEN, J.SCHMIDT, A.GREEN, M.BEVLEY  
DRAWN BY: R.KNOETTGEN, C.VINCENT CARTER  
SHEET 1 OF 3