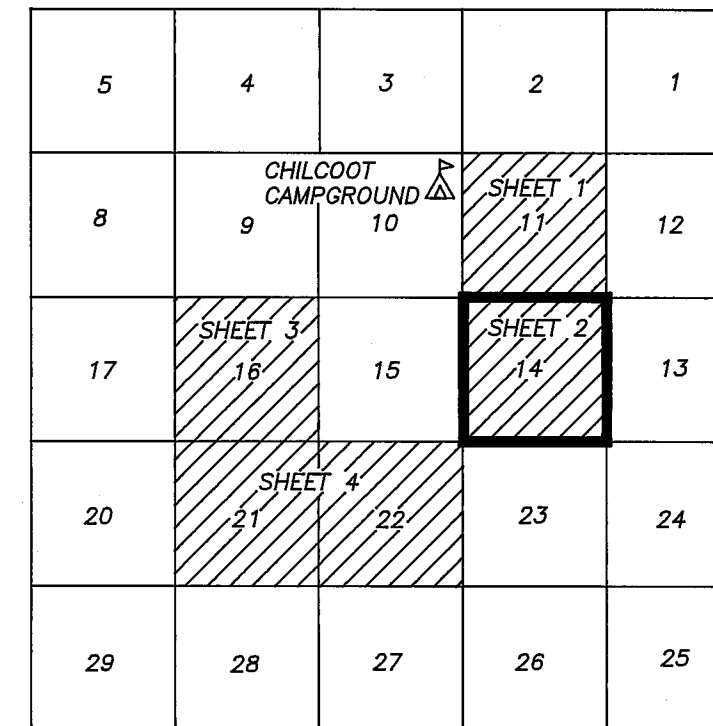


PROJECT LOCATION

T23N R16E MDM

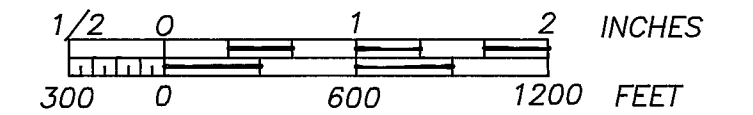


NO SCALE



SCALE

1 INCH = 600 FEET



BASIS OF BEARING

MEASURED BEARINGS AND DISTANCES ARE GRID. THEY ARE BASED ON THE CALIFORNIA COORDINATE SYSTEM OF 1983(CCS83), ZONE 1.

θ AT SE CORNER OF SECTION 21 IS 01°11'18". MULTIPLY GRID DISTANCES BY 1.000209 TO GET GROUND DISTANCES.

CONTROL WAS DONE WITH GPS, TRIMBLE NAVIGATION, 4000 ST, SINGLE FREQUENCY RECEIVERS. CONTROL WAS BROUGHT IN USING THE FOLLOWINGS STATIONS:

"HAWLEY"
 LATITUDE: 39°49'05.39416" N 1821278.349 N
 LONGITUDE: 120°22'29.81585" W 7018148.208 E
 "D 143"
 LATITUDE: 39°48'33.80081 N 1818841.536 N
 LONGITUDE: 120°14'06.57956" W 7057474.307 E
 AS PUBLISHED BY NATIONAL GEODETIC SURVEYS (NGS) IN FEBRUARY 1987.

GENERAL NOTES

A STANDARD UNITED STATES FOREST SERVICE (USFS) DRIVE-IN MONUMENT IS A 5/8" DIAMETER ALUMINUM ROD WITH A 3-1/4" ALUMINUM CAP EMBOSSED WITH THE USFS LOGO.

A STANDARD UNITED STATES FOREST SERVICE (USFS) MONUMENT IS A 3" OUTSIDE DIAMETER ALUMINUM PIPE 30" LONG WITH A 3-1/4" ALUMINUM CAP EMBOSSED WITH THE USFS LOGO.

A STANDARD UNITED STATES FOREST SERVICE (USFS) ROCK CAP IS A 3-1/4" DIAMETER ALUMINUM CAP EMBOSSED WITH THE USFS LOGO WITH A 4" LONG STEM.

SURVEY HISTORY

R1	E.DYER	AUG 1863	GLO
R2	A.SMITH	JUL 1874	GLO
R3	D.BROWN	AUG 1875	GLO
R4	G.PEARSON	OCT 1912	GLO
R5	J.HAMBY	JUN 1979	5RS50
R6	C.BROWN	SEP 1987	7RS141
R7	J.HAMBY	FEB 1994	10PM103
R8	J.HAMBY	JUN 1994	10RS1

CALIFORNIA COORDINATE SYSTEM, 1983 (CCS83)

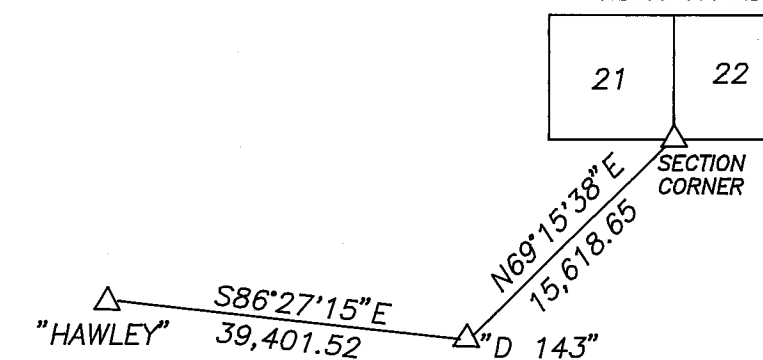
ZONE 1

SECTION & QUARTER CORNERS ON THIS SHEET

COR	NORTHING	EASTING	COR	NORTHING	EASTING
10	1834987.651	7077203.638	18	1832348.9325	7077251.104
11	1835064.999	7079843.211	21	1829710.212	7077298.569
12	1835097.229	7082549.491	22	1829751.949	7079937.207
17	1832449.929	7082569.936	23	1829735.066	7082588.691

CONTROL SCHEME

NO SCALE T23N R16E



LEGEND

- FOUND CORNER
- SET CORNER
- PROPERTY BOUNDARY MARKED AND POSTED
- ORIGINAL GLO CORNER SEARCHED FOR BUT NOT FOUND

RECORD OF SURVEY

LOCATED IN SECTIONS 11, 14, 16, 21, & 22 T23N R16E MDM PLUMAS COUNTY, CALIFORNIA

FOR PLUMAS NATIONAL FOREST PO BOX 11500 QUINCY, CALIFORNIA 95971

SURVEY CREW: R.KNOETTGEN J.SCHMIDT D.HOBBS
 M.BEVLEY L.GROSS A.GREEN
 DRAWN BY: S.SASSER & R.KNOETTGEN SHEET 2 OF 8