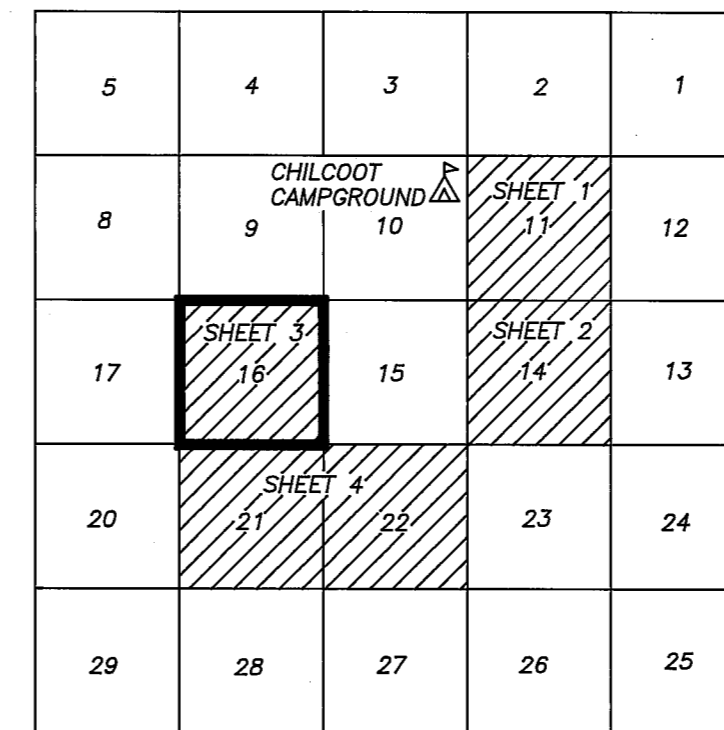


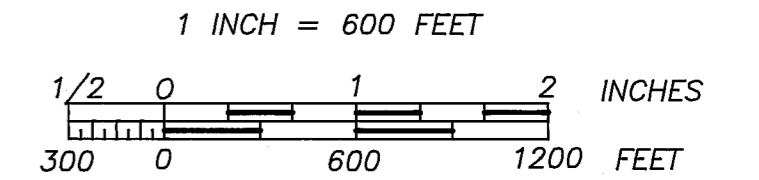
PROJECT LOCATION

T23N R16E MDM



NO SCALE

SCALE



BASIS OF BEARING

MEASURED BEARINGS AND DISTANCES ARE GRID. THEY ARE BASED ON THE CALIFORNIA COORDINATE SYSTEM OF 1983(CCS83), ZONE 1.

θ AT SE CORNER OF SECTION 21 IS 01°11'18". MULTIPLY GRID DISTANCES BY 1.000209 TO GET GROUND DISTANCES.

CONTROL WAS DONE WITH GPS, TRIMBLE NAVIGATION, 4000 ST, SINGLE FREQUENCY RECEIVERS. CONTROL WAS BROUGHT IN USING THE FOLLOWINGS STATIONS:

"HAWLEY"
 LATITUDE: 39°49'05.39416" N 1821278.349 N
 LONGITUDE: 120°22'29.81585" W 7018148.208 E

"D 143"
 LATITUDE: 39°48'33.80081 N 1818841.536 N
 LONGITUDE: 120°14'06.57956" W 7057474.307 E

AS PUBLISHED BY NATIONAL GEODETIC SURVEYS (NGS) IN FEBRUARY 1987.

GENERAL NOTES

A STANDARD UNITED STATES FOREST SERVICE (USFS) DRIVE-IN MONUMENT IS A 5/8" DIAMETER ALUMINUM ROD WITH A 3-1/4" ALUMINUM CAP EMBOSSED WITH THE USFS LOGO.

A STANDARD UNITED STATES FOREST SERVICE (USFS) MONUMENT IS A 3" OUTSIDE DIAMETER ALUMINUM PIPE 30" LONG WITH A 3-1/4" ALUMINUM CAP EMBOSSED WITH THE USFS LOGO.

A STANDARD UNITED STATES FOREST SERVICE (USFS) ROCK CAP IS A 3-1/4" DIAMETER ALUMINUM CAP EMBOSSED WITH THE USFS LOGO WITH A 4" LONG STEM.

ACREAGES ARE CALCULATED USING GROUND DISTANCES.

SURVEY HISTORY

| | | | |
|----|-----------|----------|---------|
| R1 | E.DYER | AUG 1863 | GLO |
| R2 | A.SMITH | JUL 1874 | GLO |
| R3 | D.BROWN | AUG 1875 | GLO |
| R4 | G.PEARSON | OCT 1912 | GLO |
| R5 | J.HAMBY | JUN 1979 | 5RS50 |
| R6 | C.BROWN | SEP 1987 | 7RS141 |
| R7 | J.HAMBY | FEB 1994 | 10PM103 |
| R8 | J.HAMBY | JUN 1994 | 10RS1 |

**CALIFORNIA COORDINATE SYSTEM, 1983 (CCS83)
 ZONE 1**

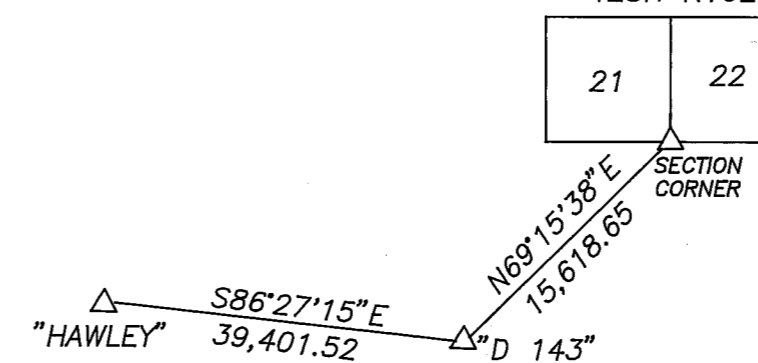
| COR | NORTHING | EASTING | COR | NORTHING | EASTING |
|-----|-------------|-------------|-----|-------------|-------------|
| 24 | 1834923.274 | 7066607.915 | 34 | 1829666.662 | 7071946.621 |
| 25 | 1832258.039 | 7066647.843 | 54 | 1834953.706 | 7071924.625 |
| 28 | 1832310.184 | 7071935.623 | 58 | 1834915.953 | 7069262.984 |
| 31 | 1829592.804 | 7066687.772 | 59 | 1834839.300 | 7061309.088 |
| 33 | 1829626.522 | 7069317.263 | 61 | 1845585.070 | 7066349.663 |

LEGEND

- FOUND CORNER
- SET CORNER
- PROPERTY BOUNDARY MARKED AND POSTED
- ORIGINAL GLO CORNER SEARCHED FOR BUT NOT FOUND

CONTROL SCHEME

NO SCALE T23N R16E



RECORD OF SURVEY

LOCATED IN SECTIONS 11, 14, 16, 21, & 22 T23N R16E MDM
 PLUMAS COUNTY, CALIFORNIA

FOR
PLUMAS NATIONAL FOREST
 PO BOX 11500 QUINCY, CALIFORNIA 95971

SURVEY CREW: R.KNOETTGEN J.SCHMIDT D.HOBBS
 M.BEVLEY L.GROSS A.GREEN
 DRAWN BY: S.SASSER & R.KNOETTGEN

SHEET 3 OF 8