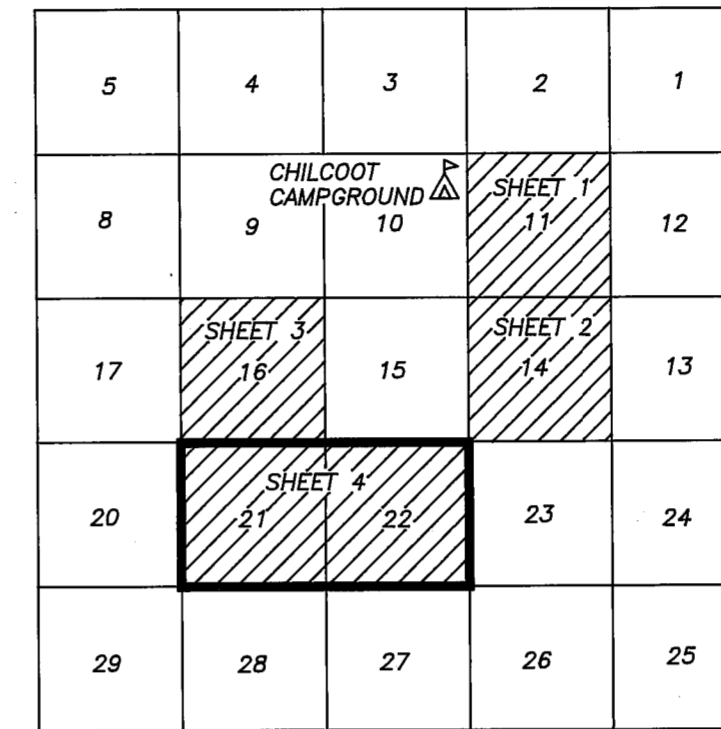


PROJECT LOCATION

T23N R16E MDM

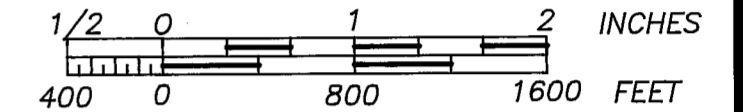


NO SCALE



SCALE

1 INCH = 800 FEET



BASIS OF BEARING

MEASURED BEARINGS AND DISTANCES ARE GRID. THEY ARE BASED ON THE CALIFORNIA COORDINATE SYSTEM OF 1983(CCS83), ZONE 1.

θ AT SE CORNER OF SECTION 21 IS 01°11'18". MULTIPLY GRID DISTANCES BY 1.000209 TO GET GROUND DISTANCES.

CONTROL WAS DONE WITH GPS, TRIMBLE NAVIGATION, 4000 ST, SINGLE FREQUENCY RECEIVERS. CONTROL WAS BROUGHT IN USING THE FOLLOWINGS STATIONS:

"HAWLEY"
 LATITUDE: 39°49'05.39416" N 1821278.349 N
 LONGITUDE: 120°22'29.81585" W 7018148.208 E

"D 143"
 LATITUDE: 39°48'33.80081 N 1818841.536 N
 LONGITUDE: 120°14'06.57956" W 7057474.307 E

AS PUBLISHED BY NATIONAL GEODETIC SURVEYS (NGS) IN FEBRUARY 1987.

GENERAL NOTES

A STANDARD UNITED STATES FOREST SERVICE (USFS) DRIVE-IN MONUMENT IS A 5/8" DIAMETER ALUMINUM ROD WITH A 3-1/4" ALUMINUM CAP EMBOSSED WITH THE USFS LOGO.

A STANDARD UNITED STATES FOREST SERVICE (USFS) MONUMENT IS A 3" OUTSIDE DIAMETER ALUMINUM PIPE 30" LONG WITH A 3-1/4" ALUMINUM CAP EMBOSSED WITH THE USFS LOGO.

A STANDARD UNITED STATES FOREST SERVICE (USFS) ROCK CAP IS A 3-1/4" DIAMETER ALUMINUM CAP EMBOSSED WITH THE USFS LOGO WITH A 4" LONG STEM.

ACREAGES ARE CALCULATED USING GROUND DISTANCES.

SURVEY HISTORY

R1 E.DYER	AUG 1863	GLO
R2 A.SMITH	JUL 1874	GLO
R3 D.BROWN	AUG 1875	GLO
R4 G.PEARSON	OCT 1912	GLO
R5 J.HAMBY	JUN 1929	5RS50
R6 C.BROWN	SEP 1987	7RS141
R7 J.HAMBY	FEB 1994	10PM103
R8 J.HAMBY	JUN 1994	10RS1

CALIFORNIA COORDINATE SYSTEM, 1983 (CCS83) ZONE 1

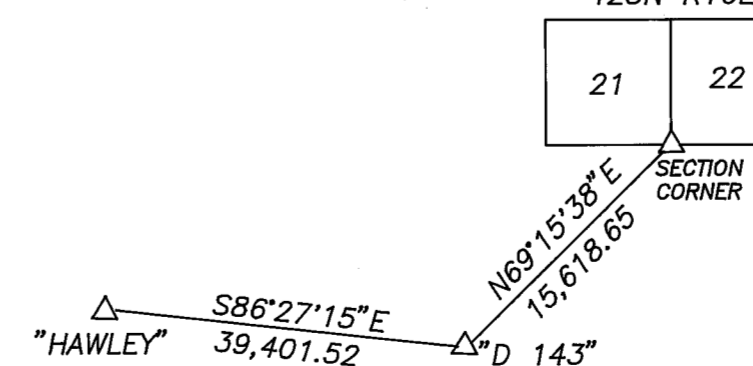
COR	NORTHING	EASTING	COR	NORTHING	EASTING
21	1829710.212	7077298.569	38	1824313.519	7066749.445
31	1829592.804	7066687.772	39	1824350.902	7069398.372
33	1829626.522	7069317.263	40	1824372.425	7072080.862
34	1829666.662	7071946.621	42	1829706.589	7074613.326
35	1826953.161	7066718.608	47	1827071.077	7077331.832
36	1826964.225	7069358.194	49	1824402.088	7074723.252
37	1826975.509	7072050.278	50	1824431.938	7077364.737

LEGEND

- FOUND CORNER
- SET CORNER
- PROPERTY BOUNDARY MARKED AND POSTED
- ORIGINAL GLO CORNER SEARCHED FOR BUT NOT FOUND

CONTROL SCHEME

NO SCALE T23N R16E



RECORD OF SURVEY

LOCATED IN SECTIONS 11, 14, 16, 21, & 22 T23N R16E MDM PLUMAS COUNTY, CALIFORNIA

FOR PLUMAS NATIONAL FOREST

PO BOX 11500 QUINCY, CALIFORNIA 95971

SURVEY CREW: R.KNOETTGEN J.SCHMIDT D.HOBBS
 M.BEVLEY L.GROSS A.GREEN
 DRAWN BY: S.SASSER & R.KNOETTGEN

SHEET 4 OF 8