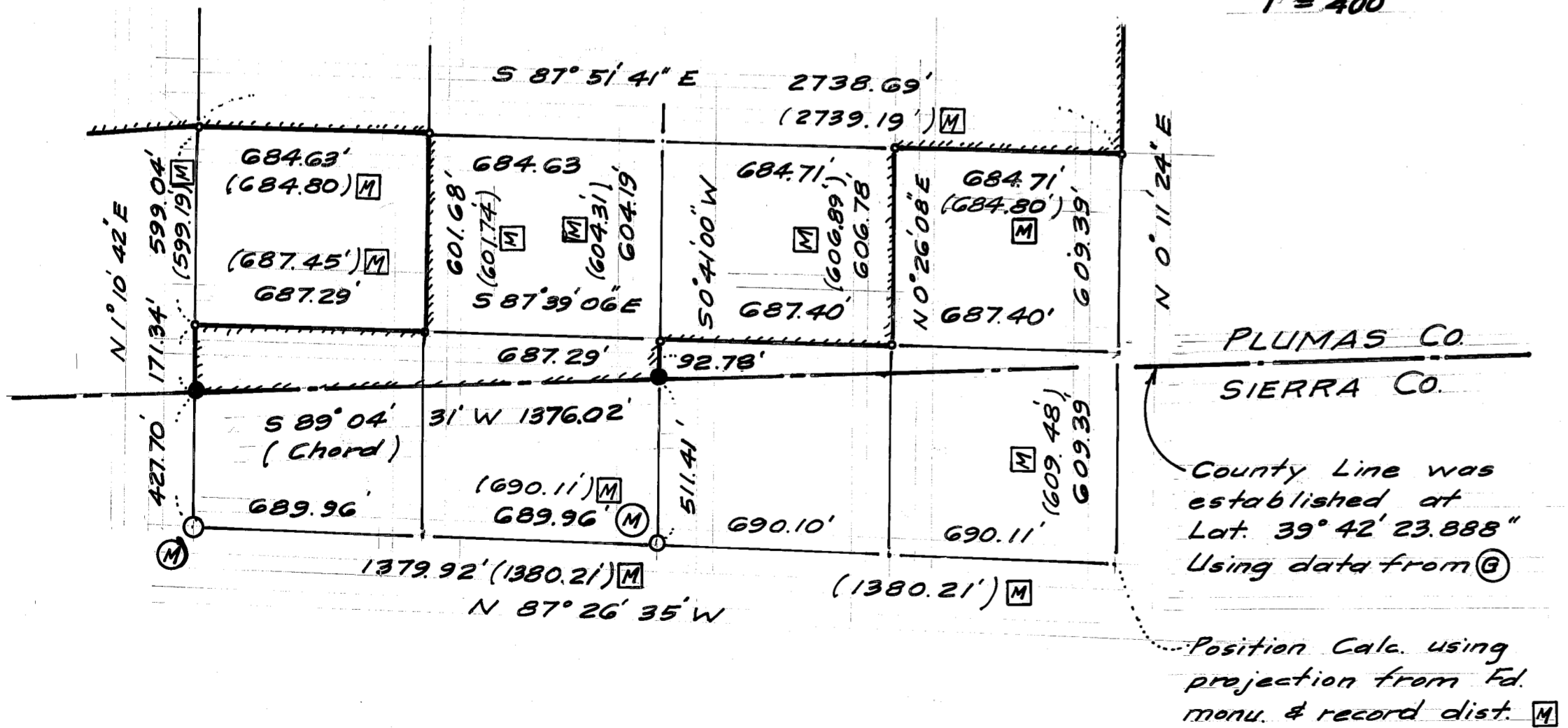


DETAIL "D"
1" = 200'

DETAIL "F"
1" = 400'



DETAIL "E"
1" = 400'

RECORD REFERENCES

SYMBOL	FILED	SOURCE	DATE
A	GLO	William Minto	1882
B	GLO	Art Keddie	1870
C	Cal Trans	R/W Data	Various
D	1 RS 93	Flannagan	1952
E	4 RS 8	John Simpson	1972
F	4 RS 117	Richard Lundy	1977
G	5 RS 102 5 RS 140	John Hamby	1980
H	6 RS 63	"	1982
I	7 M 81	Larry Fites	1993
J	8 RS 93	John Christofferson	1989
K	9 PM 71	John Hamby	1987
L	9 RS 82	Larry Fites	1992
M	9 RS 107	William Snow	1993
N	9 RS 117	Larry Fites	1993
O	10 PM 65	"	1992
P	9 RS 54	William Snow	1992
Q	10 RS 4	Fred Cook	1994
R	not	Gerald Henderson	?
S	4070.R.345	Deed of Trust	1984
T	44 O.R.178	Gift Deed	7/1951

LEGEND

SYMBOL	DESCRIPTION
⊙	Fd. manu. as described
⊙ (A)	Fd. manu. as used by Record (A)
●	Set 1/2" I.P. tagged RCE 14203 unless otherwise noted
⊙ (B)	Calc. corner based upon and monumented by Record (B)
↖ ↗	Calif. Co-ordinates Zone 1, NAD 83
---	Control Traverse used to establish Calif. Co-ord. N.T.S.
---	Tie
() (N)	Data as per Record Reference (N)
() (P)	Record data from record (P) converted as necessary to the Calif. Co-ord. System as determined by this Survey
△	Control station
---	Calc. position
---	Boundary of Hi-Valley-Carmichael Ranch
---	Section or Prop. Line
---	County Line

SURVEYOR'S NOTES

- The Basis of Bearing of this Survey is the Calif. Co-ord. System, Zone 1, NAD 83 established as shown herein.
- All distances shown herein are grid distances. Multiply grid distances by 1.00013602 to obtain ground distances.

RECORD OF SURVEY

OF THE
HI-VALLEY - CARMICHAEL RANCH
 MOHAWK VALLEY, PLUMAS CO., CA.
 A PORTION OF
 SECTIONS 1 & 2 T21N, R12E,
 SECTIONS 25 & 30 T22N, R12E &
 SECTIONS 31 & 32 T22N, R13E

BY
 McCAIN ASSOCIATES
 P.O. BOX 448
 SUSANVILLE, CA. 96130